

# Glendale girls return four letterwinners for 2012-13 season

By Jaclyn Yingling  
Sports Editor

FLINTON — The Glendale girls basketball team returns four letterwinners for the 2012-13 season, but the loss of four seniors leaves some holes to fill for head coach John Matchock and the Lady Vikings.

The team went 8-14 last season, posting a 6-2 mark in the Moshannon Valley League. Glendale's only two losses were to MVL champ West Branch.

But the team struggled in the Inter-County Conference, winning just three games in the always-competitive league. Two of those wins came against rival Moshannon Valley, but the Lady Vikings hope to improve on that this season.

"I believe West Branch is one of the teams to beat, but I think all the teams are capable of beating each other," said Matchock. "All the teams have good coaches and prepare their teams well. You have to be on your toes every game."

"I don't think there will be any easy games this year. If we don't execute and perform well on a given night against any of these teams, the result will not be in our favor. We have to play within ourselves and not try to do too much."

After losing Progressland first team all-star and leading scorer Kelli McGarvey (13.7 points per game) to graduation, the Lady Vikings will need to rely more on senior Katelyn Matthews, who averaged 11.0 ppg last season.

Matthews scored double digits in 14 games last season, including a season-high of 19 against Mount Union.

"With McGarvey graduating, we lost a lot," Matchock said. "She posed a big threat to the opposition. We just need people to step up their game. (Cassie) Spangle was our ball handler and (Marissa) Grega provided defense. I believe we have the girls who can do it, it's just a matter of them having the confidence to do it. The coaches have faith in them, they just have to execute on the floor."

Spangle was also the Lady Vikings' leading three-point scorer. Spangle had 12 treys last season for Glendale and averaged 4.6 ppg.

The Lady Vikings new outside shot reliance will fall on senior

Cassidy Noel, who had six threes last season, good enough for second-best on the team.

Also gone are Grega, who averaged 4.6 points per game and was one of the Lady Vikings' key defenders, and Samantha Barnhart, who played in 13 games.

Matchock hopes letterwinner Caitlin Kimberly can step up and fill the defensive role. Kimberly is quick on defense and likes to force turnovers.

"Our four letterwinners saw a lot of time last year, either starting or coming off the bench," Matchock said. "I feel confident they will perform well. We need some others to step up and help the team."

"We played fairly well this summer, but this is the regular season coming upon us. This is when it counts the most, we need to continue to play well."

Kristal Peterson, the lone junior letterwinner, is scheduled to start this season. Peterson scored 1.4 points per game last season and played in all but one game.

"Our starting five will be Matthews, Kimberly, Noel, Peterson, and (Paige) Potter," Matchock said. "We will stay with that for a few games and re-evaluate it from there and make changes if need be. We need to establish some consistency and chemistry with these five. If not, we will look to make some changes to find the right chemistry."

Senior Ashley Reed, along with junior Courtney McMurray, hopes to contribute off the bench. All saw limited action on varsity last season.

Matchock also has five sophomores in Katie Kutruff, Kiana Johnston, Alisha Plummer, Shannon Ricketts and Brittney Witherow who will see plenty of action in junior varsity as well as some time on varsity.

Freshmen Anna Fowler and Meagan McMillen round out the roster for the Lady Vikings.

"Almost every girl is going to see some varsity time at first to see what we have," said Matchock. "We are preaching defense. You can teach someone to shoot, pass and dribble. It's hard to teach someone to play defense."

"There really isn't too much glory in it but if you play good defense, you can limit any team in scoring. You can get easy baskets without having to run an offense by playing good defense. We need to play defense with our feet and not our hands."

With almost half of their roster being new players, the Lady Vikings will have to learn to mesh early if they want to be successful.

"Having half the team as new players, we are going to have to rely on everyone of them," said Matchock. "That can be either at practice or in a game. We need to push each other to make the team better."



Photo by Chris Wechtenhiser

**Lady Vikings letterwinners** — Glendale returns four letterwinners to its 2012-13 squad. From left, are Kristal Peterson, Katelyn Matthews, Cassidy Noel and Caitlin Kimberly.

# Big third quarter propels Lady Vikings over Damsels

By Andy Stine  
Sports Writer

**FLINTON** — First games are usually determined by who can control their nerves throughout the contest. It was apparent there were butterflies from many players on both teams in the opening minutes between the Moshannon Valley and Glendale girls basketball teams.

After the first half, the Lady Vikings calmed down and played more fundamental basketball, outscoring the Damsels 15-2 in the third period. The big quarter helped Glendale defeat Mo Valley, 39-20, on the first day of the Glendale Tip-Off Tournament.

"I think for the first game in the first half, I didn't like how we played," said Lady Viking head

coach John Matchock. "But it's the first game and you're going to have those first-game jitters and everything."

"In the second half, we started to play a lot better. I was happy with our beginning of the second half. We started to tail off for a bit. But overall, for a first game, like I told the girls in the locker room, that's probably 50 percent of what we can play. Hopefully, we'll come out tomorrow and play closer to 100 percent."

"We were nervous from the get-go," said Mo Valley head coach Van Cornish. "That was

my big worry. They came out just way too nervous. We made too many mistakes in the first half and got down. With a young team like that, you expect that. The biggest thing was just trying to get them to calm down and play. It was just sloppy and too many turnovers and too many bad passes. It's stuff that we have to correct over the season. We have a long way to go."



**Matthews**

Leading by eight at halftime, Glendale came out firing and scored on its first two possessions on a Katelyn Matthews lay-in and a trey from the corner from Paige Potter. Later in the period, Matthews came through on a bucket and was fouled on her way up to spark the Glendale run.

Matthews finished her night with a team-high 17 points for the

Lady Vikings.

"She was playing tough inside," said Matchock. "As soon as she got the ball inside, Mo Valley was collapsing on her. She didn't take all of her shots underneath because she was getting hit, but she did a good job. For the first game, you're going to have those jitters when you catch the ball. It's just something you have to work at."

"She did really well," said Cornish of Matthews. "She was hurting us inside. We were trying to do things that would take her away with the zone. We ended up switching over to man to see if we could stop her a little better. I think we did a little better in man than the zone."

The Damsels had one of their few bright spots of the night in the fourth quarter in freshman Hannah Kitko. Kitko splashed Mo Valley's only 3-pointer of the night in the period and sparked a 6-0 run for the Damsels.

Cassidy Noel got a bucket to break the Mo Valley rally. The Vikings also cashed in on a pair of free throws from Noel and Ashley Reed to end the game.

Points were hard to come by in the opening minutes of the game as the Damsels' Emily Smith got the first bucket of the game with just over four minutes remaining in the first quarter. Smith also got a point on a free throw, but that was all Mo Valley could manage in the first quarter.

Matthews scored five of Glendale's seven points in the stanza.

"They all played a little bit down and tried not to rush everything," said Matchock. "In the first half, they were just rushing and rushing and they weren't getting set up for shots. We talked about that at halftime. 'Just take your time, get set up for your shot and then take the shot.'

"They did a lot better in the second half. And you have to credit Mo Valley for the first half. They were playing scrappy, too. Nothing was coming easy tonight, but we were able to find our way through it."

"In the locker room, we just talked about calming down. We wanted to fastbreak, but we didn't have the fastbreak. We just needed to take our time with our passing. In the second half, we did. We got some good looks underneath. Caitlin Kimberly made some nice passes."

Up 15-10 with just under a minute left in the first half, the Lady Vikings got a free throw from Katie Kutruuff. On the Damsels' next possession, Glendale forced a turnover and passed the ball down the court to

Matthews, who scored on a layup just before the buzzer sounded.

Kitko finished the game with seven points for the Damsels, while Emily Kolesar chipped in with five.

"She's just a player," said Cornish of Kitko. "She's a great shooter. She can handle the ball a little bit, but it's her shot and her movement. She works hard in the offseason. She goes to camps in different places. She has a lot of different moves she can use."

"She has a good shot when she gets it off. She's still young and she's still prone to mistakes, but we're expecting good things from her."

"They have a good coach and they're young," said Matchock of Mo Valley. "They're obviously going to have some mistakes. We talked about this before the game when we watched the film from last year and we saw them play in Philipsburg in the fall. They're scrappy. They play hard. When they get down, they're not just

going to lay down for you. You have to give credit to their kids, too."

In the first game of the tournament, Juniata Valley squeaked by Williamsburg, 42-35 in overtime.

Glendale (1-0) will play in tonight's championship game against the Lady Hornets at 7:30, while the Damsels (0-1) will take on Williamsburg in the consolation game at 6.

## Moshannon Valley—20

Smith 1 1-2 3, Stodart 1 0-0 2, Kolesar 2 1-2 5, H. Kitko 3 0-0 7, Swoope 0 1-6 1, K. Kitko 0 0-0 0, Matchock 1 0-0 2, Kronenwetter 0 0-0 0, M. Kitko 0 0-0 0. Totals: 8 3-10 20.

## Glendale—39

Peterson 3 0-0 6, Potter 1 0-0 3, Noel 1 2-2 4, Kimberly 0 0-2 0, Matthews 7 3-5 17, McMurray 1 0-0 2, Kutruuff 1 1-2 3, Reed 1 2-2 4, Ricketts 0 0-0 0, Fowler 0 0-0 0, McMillen 0 0-0 0, Johnston 0 0-0 0, Plummer 0 0-0 0. Totals: 15 8-13 39.

Three-pointers: H. Kitko, Potter.

## Score by Quarters

Moshannon Valley	3	7	2	8-20
Glendale	7	11	15	6-39

## December 8, 2012: Juniata Valley 54 vs Glendale 33 (Glen. Tourn.)

### Glendale falls in title game of Lady Viking Tip-Off Tournament

By Jaclyn Yingling  
Sports Editor

FLINTON— After a furious second half propelled it over rival Moshannon Valley and into the championship game of the Lady Viking Tip-Off Tournament, the Glendale girls basketball team looked to get off on the right foot against Juniata Valley Saturday evening.

The Lady Vikings did just that, keeping the game close the entire first half before letting the game slip away in the second half. The Lady Hornets outscored the hosts 33-16 over the final 16 minutes to take the 54-33 victory.

"It was like the tale of two halves," said Glendale head coach John Matchock. "In the first half, we played great defense. We played a lot better than we did last night in the first

half. In the second half, we just came out flat. They went into a zone defense, and we just froze. We didn't know what to do. We were making bad passes, unforced errors, traveling with the ball. We were just a different team that came out of the locker room."

The Lady Vikings took a 6-4 lead after Kristal Peterson turned a steal into easy points. The two teams played to two different ties before an Emily Zinobile basket just before the end of the frame gave the Lady Hornets the lead.

Caitlin Kimberly knocked down two foul shots at the 7:35 mark of the second quarter to tie the game at 11-11. But Juniata Valley took the lead for good when Haley Myers drove to the basket for two and was fouled. Myers completed the three-point play to give the Lady Hornets a 14-11 advantage.

Myers, who came off the bench for Juniata Valley to lead all scorers with 18 points, scored most of them by driving right through the middle of the lane to the basket.

"We've been preaching defense," Matchock said. "I give them an incentive for taking charges. I'll buy them a milkshake. But no one would step up tonight and take a charge. I don't know why. We talked about it at halftime.

"A lot of the points were coming from Myers driving to the basket, and no one would take a charge. No one would take the charge, and the result was she would either score or we would foul her. You just can't be doing that. You have to help each other on defense."

The Lady Hornets held a 21-17 lead at the half. Glendale got a jumper from Katelyn Matthews at the buzzer to help keep the deficit at a manageable four points.

The Lady Vikings came out and answered two Juniata Valley baskets to start the third. But Myers answered with two straight buckets to give the Lady Hornets a 31-22 lead, before two Kerigan Ammerman foul shots put them up 33-22.

Juniata Valley looked to be cruising against the hesitant Glendale defense, but a scary injury to Lady Hornet senior Sam Anders on their next trip down the court, put a damper on the run.

Anders went up for a rebound and came down awkwardly on her right knee. She was down on the court for several minutes as

the Glendale trainer put an air cast on her leg. The injury happened at the 3:21 mark and kept the players off the court for several minutes.

Once the teams did get back on the court, Juniata Valley scored two quick baskets to go up 37-22.

Glendale was hampered by the fact that Matthews picked up her third and fourth fouls quickly in the frame and spent most of the quarter on the bench. Matchock put her back in to start the fourth quarter, but she fouled out just 24 seconds into the period.

"She's one of our most dominant players inside and she got into early foul trouble," he said. "Other people have to step up when that happens, and tonight no one did. It's something we have to keep working on."

Juniata Valley outscored Glendale, 13-10, in the fourth quarter to set the final at 54-33.

The Lady Vikings were led by seven points each from Matthews and Peterson. Matthews added eight rebounds, while Cassidy Noel had five rebounds.

"All the mistakes we are making like the bad passes and traveling with no pressure on us are things we can work on," Matchock said. "People get the ball and their brains work a lot faster than their hands and their feet. Those are things we can fix. We've only played two games, but we have to hope we can get better at those things.

"We have at least 20 games left this season. There are some things that we need to work on and keep getting better game by game."

The Lady Hornets' Abbie Zinobile tallied 13 points and eight rebounds, while Ammerman added eight points.

Juniata Valley improved to 2-0. Glendale dropped to 1-1 overall. The Lady Vikings host Harmony on Tuesday evening.

The Lady Vikings were represented by Matthews and Kimberly on the all-tournament team. Kimberly also received the Sportsmanship Award.

Juniata Valley's Zinobile was tabbed as the tournament's defensive player, while Myers made the all-tournament team.

Glendale hosts Harmony on Tuesday.

#### Juniata Valley—54

LeCrone 1 0-0 2; Varner 0 2-2 2; Zinobile 5 3-5 13; Anders 2 0-0 4; Ammerman 2 4-5 8; Myers 6 1-1 18; Young 2 0-0 5; Johnson 0 0-0 0; Keller 0 0-0 0; Leri 0 0-1 0; C. Miller 0 0-0 0; A. Miller 0 0-0 0; Smith 1 0-0 2. Totals: 21 10-14 54.

#### Glendale—33

McMillen 0 0-0 0; Reed 1 2-7 4; McMurray 0 0-0 0; Matthews 3 1-2 7; Potter 1 0-0 2; Fowler 0 0-0 0; Peterson 3 1-2 7; Kimberly 0 2-2 2; Kuttruff 1 2-4 4; Noel 2 0-0 5; Johnston 0 0-0 0; Ricketts 1 0-0 2; Witherow 0 0-0 0. Totals: 12 8-17 33.

Three-pointers: Myers, Young; Noel.

#### Score by Quarters

Juniata Valley	11	10	20	13—54
Glendale	9	8	6	10—33

## December 11, 2012: Harmony 35 at Glendale 58

By Andy Stine  
Sports Writer

FLINTON — In the Glendale girls basketball team's first two games of the season, the Lady Vikings showed that they have the ability to score points in a hurry.

Katelyn Matthews reassured everyone of that statement on Tuesday evening.

Matthews scored 27 points on the night and went 5-for-5 from the foul line to help Glendale drop Harmony, 58-35, at the Donald A. Kitko Gymnasium.

"I think we're starting to get into a little bit of a groove now," said Lady Viking head coach John Matchock. "In the first game, we had the jitters. In the second game, we played against Juniata Valley, which is a tough team. Harmony is a scrappy team also.

"We're starting to get into that groove now where points and plays are coming a little bit easier. We're starting to get more comfortable."

Glendale opened the game outscoring the Lady Owls 13-4 in the first quarter. Matthews, establishing her dominance early, had 10 of the Lady Vikings' 13 points with the other three going to Caitlin Kimberly.

"She's starting to find her groove, too," said Matchock of Matthews. "The first two games, she was missing a lot of easy shots. Yesterday at practice, we worked on shooting underneath with contact. Hopefully it's paying off and she continues doing that."

Harmony scored its only points of the period on a free throw each from Nikki Wortman and Lindsay Welteroth and a bucket from Alyssa Raho. The Lady Owls hurt themselves early with turnovers and spent much of the first quarter in Glendale's end of the court.

"We just have to eliminate turnovers," said Harmony head coach Ralph Butterworth. "The girls played their hearts out. They didn't give up. They kept fighting back. They did the things that I wanted. It's just turnovers. If we eliminate the turnovers, we're going to start to win. But I think we have gotten better."

The Lady Owls started the second period on a good note with a free throw from Joleen Brink and a layup from Santana

Woodley, but Matthews stepped up again and was fouled on a bucket inside the paint. Matthews scored 15 of her 27 points in the first half.

Matthews got some help off the bench from Shannon Ricketts. Ricketts got eight of her 12 points in the second quarter on clutch shooting. The Lady Vikings entered halftime with a 31-16 lead.

"We ran into foul trouble in the first half," said Matchock. "I knew at some point in our season, I was going to start using (Ricketts). Tonight happened to be the night and she came out and she played pretty well. That just makes our bench even stronger."

"It seemed like when we wanted to hold somebody down, somebody else would pick it up," said Butterworth. "If that's my team, that's what you want. If somebody wants to shut Lindsay down, I need somebody else to pick it up. Then they'll focus on her and somebody else has to pick it up. Glendale did that tonight. When we closed one door, they opened another one. They played a good game."

In the second half, Matthews picked up 12 more points before being sent out of the game early in the fourth quarter.

The Lady Owls got their lone three-pointer from Welteroth late in the third. Welteroth scored just six points due to tight defense from Matthews and the rest of her teammates throughout the contest.

"Welteroth is a good player," said Matchock. "She can shoot. She can dribble. That's one of the things we talked about before the game. We were putting Matthews on her because she is one of our best defenders. Her job was to not let her get the ball. Welteroth is still a good girl. She got her points, but luckily our other girls played good defense and held the other girls in check."

Brink led the Lady Owls with 11 points off the bench.

"We're getting there," said Butterworth. "We're only three games into it. We'll come around."

"As soon as they get the taste of what victory is like, we're going to be unstoppable. They're a good bunch of girls and they don't quit. That's what I want."

The Lady Vikings also won the junior varsity game, 30-22. Ricketts led the Lady Vikings with 12 points, while Shannon Dyda scored six points for Harmony.

Both teams return to action on Friday. Glendale (2-1) travels to Mount Union, while Harmony (0-3) visits Purchase Line.

### Harmony—35

Welteroth 2 1-2 6, Woodley 2 0-0 4, Wortman 1 3-4 5, Woodward 0 0-0 0, Dyda 0 5-6 5, Brink 4 3-5 11, Raho 1 0-0 2, Hull 0 0-0 0, Stiver 1 0-0 2. Totals: 11 12-17 35.

### Glendale—58

Peterson 0 1-2 1, Potter 2 0-2 5, Noel 2 0-0 4, Kimberly 3 1-2 7, Matthews 11 5-5 27, Reed 0 0-0 0, Kutruiff 0 0-0 0, McMurray 0 0-0 0, Ricketts 5 2-3 12, Fowler 0 0-0 0, Witherow 0 0-0 0, Plummer 0 0-0 0, Johnston 1 0-0 2. Totals: 24 9-14 58.

Three-pointers: Welteroth, Potter.

### Score by Quarters

Harmony	4	12	7	12	—35
Glendale	13	18	16	11	—58

## December 14, 2012: Glendale 23 at Mt. Union 41

**MOUNT UNION** — Glendale was toppled by Mount Union, 41-23, on Friday evening in Inter-County Conference girls basketball action.

The Lady Vikings led after the first quarter, but were outscored in the last three, including 19-4 in the fourth.

Katelyn Matthews and Kristal Peterson each had six points for Glendale.

The Lady Vikings dropped to 2-2 on the season, while Mount Union improved to 3-1.

Glendale hosts Juniata Valley on Monday.

Mount Union won the junior

varsity game, 37-28. Anna Fowler led the Lady Vikings with seven points.

### Glendale—23

McMillen 1 0-0 2, Reed 0 0-0 0, McMurray 0 0-0 0, Matthews 3 0-0 6, Potter 0 1-2 1, Fowler 0 0-0 0, Peterson 3 0-0 6, Kimberly 1 1-2 3, Kutruff 1 0-0 2, Noel 1 0-0 3, Johnston 0 0-0 0, Plummer 0 0-0 0, Witherow 0 0-0 0. Totals: 10 2-4 23.

### Mount Union—41

Sellers 5 0-2 10, Drake 4 0-0 10, Punte 0 0-0 0, White 4 2-2 10, Foor 1 0-0 2, Miner 0 0-0 0, Walker 4 1-3 9. Totals: 18 3-5 41.

Three-pointers: Noel; Drake 2.

### Score by Quarters

Glendale	8	2	9	4—23
Mount Union	5	7	10	19—41

## December 16, 2012: Juniata Valley 48 at Glendale 34

**FLINTON** — The Glendale girls basketball team fell to Juniata Valley on Monday evening, 48-34.

Katelyn Matthews scored 21 points for the Lady Vikings, while Ashley Reed chipped in with six points on a pair of 3-pointers.

Juniata Valley also took the junior varsity game, 40-25. Shannon Ricketts led Glendale with 17 points.

The Lady Vikings (2-3) host Williamsburg tomorrow.

### Juniata Valley—48

A. Miller 0 0-0 0, C. Miller 0 0-0 0, Varner 2 2-2 6, Leri 2 1-2 5, Myers 3 3-6 9, Lechrone 0 1-2 1, Young 1 0-0 3, Zinobile 5 5-8 15, Smith 0 2-2 2, Ammerman 3 0-0 7. Totals: 16 14-22 48.

### Glendale—34

Reed 2 0-0 6, McMurray 0 0-0 0, Matthews 10 1-9 21, Potter 0 0-0 0, Peterson 1 0-1 2, Kimberly 0 0-0 0, Kutruff 0 1-4 1, Noel 2 0-0 4. Totals: 15 2-14 34.

Three-pointers: Young, Ammerman; Reed 2.

### Score by Quarters

Juniata Valley	10	21	9	8—48
Glendale	9	5	13	7—34

## December 19, 2012: Williamsburg 26 at Glendale 44

### Glendale trips up Williamsburg

**FLINTON** — The Glendale girls basketball team upended visiting Williamsburg, 44-26, on Wednesday evening in an Inter-County Conference matchup.



Noel

"We played good all-around and played with tenacity," said Glendale head coach John Matchock.

Katelyn Matthews led the Lady Vikings with 17 points. Cassidy Noel added 12 points, while Kristal Peterson tallied 10.

Glendale improved to 3-3 overall and 1-2 in the ICC. The Lady Vikings travel to the

Williamsburg Tournament on Dec. 28 where they face Philipsburg-Osceola at 6 p.m.

The Lady Blue Pirates won the junior varsity game, 25-19. Shannon Ricketts was Glendale's leading scorer with six points.

### Williamsburg—26

Kensinger 1 0-0 2, McCall 1 0-2 3, Repine 2 0-4 5, Stayduhar 0 0-0 0, M. Detwiler 1 0-4 2, Rhule 2 1-1 5, Crouch 0 0-0 0, Shaw 1 0-1 2, A. Detwiler 2 0-3 4, Kennedy 1 1-2 3. Totals: 11 2-17 26.

### Glendale—44

Peterson 4 2-4 10, Kimberly 2 1-3 5, McMurray 0 0-0 0, Matthews 6 5-12 17, Noel 3 5-6 12, Reed 0 0-0 0, Potter 0 0-0 0. Totals: 15 13-25 44.

Three-pointers: Repine; Noel.

### Score by Quarters

Williamsburg	7	10	5	4—26
Glendale	13	10	7	14—44

## December 28, 2012: Glendale 35 vs Philipsburg 33 (Will. Tourn.)

# Glendale ekes past P-O

By Jaclyn Yingling  
Sports Editor

**WILLIAMSBURG** — After playing Philipsburg-Osceola in a scrimmage, Glendale head coach John Matchock had a good gameplan in place for the opening round of the Williamsburg Holiday Tournament on Friday afternoon.

All that went out the window when captain Katelyn Matthews went down after trying to draw a charge with 1:07 left in the first half.

But Matthews returned in the second half, and the Lady Vikings put together a fantastic fourth quarter, holding off a late charge by the Lady Mounties to win 35-33.

"I think what won it for us was our defense in the fourth quarter," said Matchock. "We got a lot of rebounds. We didn't give them second and third opportunities. We gave them one shot, if they got a shot off at all. We played really good defense. I keep preaching to them that defense will win you games, and I think it won us one today."

Glendale led 6-0 early, thanks to a basket from Matthews and two more by Cassidy Noel.

"Surprisingly, we came out and played well in the first quarter," Matchock said. "It was one of those mid-afternoon games and we aren't used to that. Plus, it's Christmas break. But, we came out pretty good in the first quarter."

"We just didn't keep that intensity up and we went into this little lull and let Philipsburg back into the game."

The Lady Mounties finally got on the scoreboard with 2:56 to go in the first quarter, and finished out the frame with a 6-3 run.

P-O also ended the second quarter after Matthews' injury with a 3-0 run to take a 20-17 lead at the half. The Lady Mounties then held the lead the entire third quarter, despite being outscored by the Lady Vikings, 8-6.

"Katelyn is our leader," Matchock said. "When she went down, we got a little confused on what we were supposed to be doing. But, she came back. That's one of the things I try to instill in them is that when someone is coming down the court to take the charge, I thought she got it."

Down just 26-25 after three, Glendale took charge in the fourth.

The Lady Vikings, led by six points from Matthews in the frame, outscored P-O, 10-7, in the final quarter.

"We were actually surprised we were as close as we were after we played the first quarter," Lady Mounties head coach Doug Myers said. "And then to be leading at halftime we played by far our worst game of the year. We couldn't make a shot. We didn't rebound offensively. We just played really, really bad."

"John had his team ready.

They played well and they played smart. They made the shots when they needed to make them. They outhustled us and outplayed us. We have to get better. We have to coach better, practice better and play better."

Matthews scored the first two buckets of the fourth, followed by a jumper from teammate Shannon Ricketts to go ahead 31-26.

Philipsburg-Osceola's Abby Showers answered with a basket of her own to cut the lead to 31-28.

After another Matthews basket off an inbounds pass, the Lady Mounties got a big 3 from Haylee Hayward to put the score at 33-31.

A fantastic play by Glendale's Kristal Peterson resulted in a

basket to extend the advantage to 35-31 with 56 seconds to play.

A bucket by Briana Rusnak cut the score to 35-33 with 35 seconds to go. But the Lady Mounties struggled to foul any of the Glendale ball handlers, finally getting the call with less than 15 seconds to play.

The Lady Vikings missed the shot, which went out of bounds, giving P-O one last shot to tie the game or win it with a 3.

The first attempt to get the ball in was met with a block that sent the ball into the scorer's table. The Lady Mounties called timeout with 3.0 left to draw up a play that would involve bringing the ball in right in front of the Glendale bench.

The play worked, as Hayward was able to get off a shot, but it missed just right and was rebounded by Matthews, who held the ball as time ran out.

"Everyone that got in contributed something," said Matchock. "We brought Shannon Ricketts in and she contributed. She scored two points and got some steals and rebounds. It's just nice to know that if we get in that situation again, I have some younger girls who can come in and help the team out."

Matthews led all scorers with 17 points, 11 rebounds and three blocks. Noel netted 13 points and four rebounds, Peterson had eight rebounds, while Courtney McMurray and Noel had four each.

"She's a good shooter," said Matchock of Noel. "When she gets her open looks and has time to square up and shoot, she will make most of them. Luckily, she was on tonight."

P-O's high scorer was Rusnak, who had 10 points and a game-high 13 rebounds, as well as three blocks.

"Briana played pretty good," Myers said. "We do depend on her a lot, probably too much. But she plays hard and she does the best she can."

"We just have to keep trying to get better."

The Lady Mounties dropped to 1-6 overall and play Moshannon Valley this evening in the consolation game at 6.

Glendale improved to 4-3 overall and plays Williamsburg in the championship game at 7:30 p.m.

### Philipsburg-Osceola—33

Burge 1 0-0 2, Hayward 2 3-3 8, Showers 2 1-4 5, Myers 3 0-0 6, Meersand 1 0-0 2, Rusnak 4 2-2 10, Whitehead 0 0-0 0, Bone 0 0-0 0. Totals: 13 6-9 33.

### Glendale—35

Reed 0 0-2 0, McMurray 0 0-1 0, Matthews 7 3-4 17, Potter 0 0-0 0, Peterson 1 1-2 3, Kimberly 0 0-1 0, Kutruff 0 0-0 0, Noel 6 1-2 13, Ricketts 1 0-0 2. Totals: 15 5-12 35.

Three-pointers: Hayward.

### Score by Quarters

Philipsburg-Osceola	6	14	6	7—33
Glendale	9	8	8	10—35

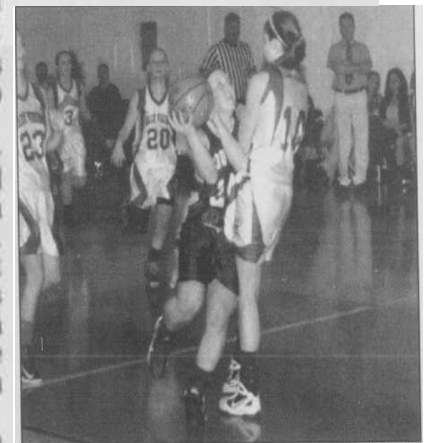


Photo by Chris Wechtenhiser  
Philipsburg-Osceola's Abby Showers drives to the basket as Glendale's Katelyn Matthews tries to draw a charge. Matthews was called for the foul, but the Lady Vikings won, 35-33.



Photo by Chris Wechtenhiser  
Glendale's Cassidy Noel (23) goes up for a basket as Philipsburg-Osceola's Briana Rusnak defends on Friday afternoon. Noel scored 13 points in the Lady Vikings' 35-33 victory, while Rusnak had a team-high 10 points and 13 rebounds.

## January 5, 2013: West Branch 62 at Glendale 21

By Jon Christoff  
Sports Writer

FLINTON — West Branch girls basketball coach Dan Socash saw what he wanted out of his team, while Glendale head coach John Matchock wasn't sure what he saw was his team.

Socash's Lady Warriors continued their hot streak on Thursday night in Flinton, as their pressure defense led to a highly efficient offensive effort in a dominating 62-21 win.

West Branch's defense forced 28 Lady Viking turnovers in the contest with 18 coming in the opening half. After the first 16 minutes of play, the Lady Warriors held a 40-11 advantage and didn't look back.

"I told them we needed to come out every possession and use our speed," said Socash, whose team was 19-of-34 from the field in the first half. "We know who we are. We were very aggressive the first half. I was really impressed (because) we ran the floor well.

"It's Glendale at home and it's a Mo Valley League game, so I told the girls we needed to play as hard as we can because (Glendale) thought we were the favorites (in the MVL) and everyone is going to be out to get us."

Janene Couteret, MeLesha Ahlberg and Christie Sabol — the front three in West Branch's press — were the main beneficiaries on the offensive end of the court, as each had double digits by the end of the half.

Couteret led all scorers in the contest with 20 points, while Ahlberg added 17. Sabol scored all 10 of her points in the first two quarters, as foul trouble forced her to the bench at the end of the third quarter.

"I don't know what it was," Matchock said, "but we did not show up at all tonight. Our heads were elsewhere. I have no idea where they were at, but they weren't in this game. I can tell you that right now.

"I give credit to West Branch because they're a good group of girls, but I thought for sure we'd give them a better game than what we did. We just did not show up. ... We just were not

there in any facet of the ball-game. None. Physically, there were bodies out there, but I don't know who they were."

The Lady Warriors exploded for 26 points in the second quarter behind 12-of-15 shooting from the field, but the momentum didn't carry over into the third.

Neither team was able to buy a bucket until Glendale's Katelyn Matthews snapped an 0-for-17 streak with 2:15 left on the clock.

West Branch's first point came from Missy Croyle on a free throw with 1:52 to play, but Couteret and Ahlberg made sure the Lady Warriors got back on track.

The pair scored five points in the final 38 seconds of the third, which parlayed into a rejuvenated fourth-quarter effort where West Branch outscored the hosts 16-3 to set the final.

"We had a number of chances underneath the basket in the third quarter," said Matchock, whose team was 2-for-16 from the floor in the third. "That's something that's plagued us so far this season, too — missing easy layups when we get shots underneath. Again, that goes with not having your head in the game. You've got to concentrate.

"I don't have any answers to it. It baffles me."

Matthews finished the contest with 11 of her team's points, while five other players finished with two points apiece in the loss.

The Lady Viking senior pulled down a team-high seven rebounds.

"I thought we did a better job against her in the first half," Socash said of his team's defense of Matthews. "I thought we recognized where she was, but in the second half we missed her a couple times. She's a great player, especially in the post where she has some great moves.

"She's quick and she has a nice cross-court, sweeping left (hand). I thought we held their outside shooters (in check). I thought we played really well. I was proud of all of them."

Matthews got Glendale on the board first at the 6:12 mark of the opening quarter, but the Lady Warriors responded with a 12-1 run that didn't end until the Lady Vikings' Anna Fowler knocked down a jumper late in the stanza.

Matthews atoned for all of her team's points in the second until Paige Potter's jumper kissed off the glass with time expiring in the half.

West Branch, on the other hand, had no such issues getting shots to fall.

Couteret had eight points in the quarter and Ahlberg added seven, as the Lady Warriors improved to 4-2 on the season.

"We were knocking shots down," said Socash. "We started last week, and it took the first two weeks of games. We had a terrible percentage. If we could have knocked shots down like this against Bald Eagle (Area) in the first game, it could have been different.

"We knocked a lot down in the first half. We do a lot of shooting and the girls are getting confidence."

West Branch is back in action Tuesday at Harmony, while Glendale (4-4) travels to face Williamsburg in the finals of the Lady Pirates' tournament on Saturday.

The Lady Warriors won the jayvee game, 47-18.

### West Branch—62

Nye 2 0-0 6, Couteret 10 0-3 20, Ahlberg 7 0-2 17, Sabol 5 0-1 10, McCracken 0 0-0 0, Kolesar 0 0-0 0, Miller 3 0-0 6, Croyle 1 1-2 3, Pedmo 0 0-0 0, Prinkey 0 0-0 0, Hayward 0 0-0 0, Trude 0 0-0 0, Rockey 0 0-0 0. Totals: 28 1-8 62.

### Glendale—21

McMurray 1 0-0 2, Peterson 0 0-0 0, Noel 0 2-2 2, Kimberly 0 0-0 0, Matthews 3 5-10 11, Potter 1 0-0 2, Kutruiff 0 0-0 0, Fowler 1 0-0 2, Reed 0 0-0 0, Ricketts 0 0-0 0, McMillen 0 0-0 0, Johnston 0 0-0 0, Witherow 1 0-0 2. Totals: 7 7-12 21.

Three-pointers: Ahlberg 3, Nye 2.

### Score by Quarters

West Branch	14	26	6	18—62
Glendale	5	6	7	3—21

## January 5, 2013: Glendale 20 vs Williamsburg 25 (Will. Tourn.)

Williamsburg 25, Glendale 20  
Points came at a premium in

Saturday evening's championship game. In the end, too many turnovers were costly for the Lady Vikings, as the host team Williamsburg defeated Glendale, 25-20.



H. Kitko

"The past two games we've been having trouble with our turnovers," said Glendale head coach John Matchock. "I don't know what it is. All season we've been playing pretty well except for these two games. I don't really have any answers for it.

"We've been playing pretty good defense, but tonight it was turnovers just killing us. We missed the easy opportunities right at the basket. Nothing on the offensive end is going very well right now."

The game was held scoreless until 3:59 remained in the first quarter when Cassidy Noel's free throw put the Lady Vikings on the board. Noel also had a bucket late in the quarter to help Glendale lead 3-2 after one period of play.

A bucket each from Kristal Peterson and Katelyn Matthews pushed Glendale's lead to five,

but the Lady Pirates went on a 10-2 run to end the half with a 3-point lead.

Williamsburg extended its lead to eight in the middle of the third quarter, but a Noel trey and a Peterson bucket put the Vikings down by six, 22-16 with the last eight minutes to play.

The game's defense was shown in the fourth quarter with no points being scored until a Peterson lay-in with two minutes left in the game.

Matthews hit a pair of free throws to bring the Lady Vikings within two, but Williamsburg's Hailey McCall hit three free throws in the last 30 seconds to seal the victory for the Lady Pirates.

Matthews and Noel were named to the all-tournament team, while Peterson was selected as the tournament's best defensive player.

"The past two games have been very frustrating," said Matchock. "I don't know if it's the layoff we had over Christmas. Defensively, we've been playing pretty good. Offensively, we hit a wall. Everything we do on offense is not working right now. We have three days of practice and hopefully on Thursday we'll have everything going again. We'll see."

### Championship game

#### Glendale—20

McMurray 0 0-0 0, Matthews 1 3-7 5, Peterson 3 0-0 6, Kimberly 0 0-0 0, Noel 3 2-4 9, Reed 0 0-0 0, Fowler 0 0-0 0. Totals: 7 5-11 20.

#### Williamsburg—25

M. Detwiler 2 0-1 4, Rhule 3 1-2 7, Stayduhar 2 0-0 6, McCall 0 3-4 3, Kensinger 2 0-1 4, Repine 0 0-4 0, Shaw 0 0-0 0, Kennedy 0 0-0 0, Crouch 0 1-2 1. Totals: 9 5-14 25.

Three-pointers: Noel; Stayduhar 2.

#### Score by Quarters

Glendale	3	6	7	4—20
Williamsburg	2	10	10	3—25



# January 10, 2013: Glendale 47 at MoValley 24

By Jon Christoff  
Sports Writer

AMESVILLE — Moshannon Valley girls basketball coach Van Cornish called a timeout just over a minute into Thursday's contest with Glendale when the Lady Vikings' press led to a quick 7-0 lead for the visitors.

Unfortunately for Cornish, his Damsels were unable to get any closer.

Glendale's full-court pressure led to nine Mo Valley turnovers in the first quarter, which saw the Lady Vikings sprint out to a 14-3 lead en route to a 47-24 triumph.

His team's effort was a welcome sight for Glendale coach John Matchock, as the Lady Vikings were coming off a 25-20 setback at Williamsburg on Saturday night.

"We stressed yesterday and we stressed before the game that we have to bounce back," said Matchock. "We came out on fire. We had a little lull in the second quarter that I wasn't happy about, but came out real good in the second half. Hopefully we can continue that momentum next week."

The Lady Vikings' Katelyn Matthews opened the scoring with a 3-pointer 45 seconds into the game, as Glendale's half-court offense was meticulous in setting up the opening shot on the game's first possession.

By the time the Damsels got the ball inbound, the Lady Vikings already had a 7-point cushion.

Cassidy Noel's jumper sandwiched Matthews' 3-pointer and a layup off a steal, which

prompted Cornish to call timeout with 6:47 on the clock.

"We were focusing on our defense tonight because it's what won us the game the last time we played them," Matchock said.

"We came out on fire. We made some early shots, got some steals and got some easy layups and that's what we've got to do every game."

The Damsels figured out Glendale's press in the second, where they were able to pull to within single digits.

Mo Valley whittled the deficit back to seven with Hannah Kitko's 3-pointer with 3:08 left in the half. Teammate Ally Kronenwetter added four of her five points in the stanza, as the Damsels outscored the Lady Vikings, 9-8.

"We know their press is coming and we told them that before the game," said Cornish. "Sometimes it's like we've never seen a press before. When we make the same little mistakes, it just kills us. It's simple, youthful mistakes."

"We play good in spurts. We have two or three minutes in time, but then we forget about

when we do something to break it. We just go back to what we were doing. We're just not consistent enough."

Mo Valley's success was short-lived, however, as Matthews scored the final three points of the half.

Matthews and company didn't stop at the halftime buzzer, as the Lady Vikings went on a 26-6 run following Kitko's trifecta before the Damsels scored the final six points of the game with less than a minute to go in the fourth.

Matthews led all scorers with 22 points and 14 rebounds, while Noel added eight. Caitlin Kimberly chipped in with seven for the Lady Vikings, who evened their mark at 5-5.

"(Katelyn) has some size that is hard for teams to match up against," Matchock said, "and some of the other girls stepped up, too. Caitlin Kimberly hit some shots from the outside and Cassidy was hitting some shots from the outside."

"When teams start to key on Katelyn, she can start dishing it back outside and we can start hitting some shots."

"Our offense isn't quite where I want it to be, but it's better than it has been in the past few games. Hopefully this is a sign of things to come."

Mo Valley's Emily Kolesar knocked down a shot from the perimeter with 59 seconds left to play, and Haley Stodart netted the final three points on a short jumper and a foul shot to set the final.

Kolesar led the Damsels (1-10) with eight points, while Kitko, Kronenwetter and Stodart each added five. Kronenwetter and Tayia Swoope paced Mo Valley with nine rebounds apiece.

"We've just got to be tough with the ball and take care of it," said Cornish, whose team was 4-for-27 from the field in the second half. "We get hyped up at the beginning of the game and then

we get a little out of sorts."

"I think we missed a lot of shots. We went cold and when we go cold, it's rough. We were getting the shots, but they didn't fall."

Both teams take to the road on Monday. The Lady Vikings will face Claysburg-Kimmel, while the Damsels travel to Bellwood-Antis.

Mo Valley took the jayvee contest, 36-31.

## Glendale—47

Matthews 9 3-6 22, Kimberly 3 0-0 7, Noel 3 0-0 8, Peterson 2 2-3 6, McMurray 1 0-2 2, Reed 0 0-0 0, Ricketts 0 0-0 0, Kutruff 1 0-1 2, McMillen 0 0-0 0, Witherow 0 0-0 0, Plummer 0 0-0 0, Johnston 0 0-0 0. Totals: 19 5-12 47.

## Moshannon Valley—24

Swoope 0 1-2 1, Stodart 2 1-3 5, Smith 0 0-0 0, Kolesar 3 0-2 8, H. Kitko 2 0-0 5, Kronenwetter 2 1-2 5, K. Kitko 0 0-0 0, Smeal 0 0-0 0, Matchock 0 0-0 0. Totals: 9 3-9 24.

Three-pointers: Noel 2, Matthews, Kimberly; Kolesar 2, H. Kitko.

## Score by Quarters

Glendale	14	8	11	14—47
Mo Valley	3	9	4	8—24

## January 14, 2013: Glendale 25 at Claysburg 50

### Lady Vikings defeated, 50-25

CLAYSBURG — The Glendale girls basketball team was downed, 50-25, at Claysburg-Kimmel on Monday night.

Katelyn Matthews had 12 points and 10 rebounds to pace the Lady Vikings, who dipped to 5-6 on the season.

Glendale returns to the hardwood Thursday when it hosts Bellwood-Antis.

The Lady Bulldogs took the junior varsity contest, 30-11. Shannon Ricketts had four points in the loss.

Glendale—25

McMillen 0 0-2 0, Reed 2 0-0 5, McMurray 0 0-0 0, Matthews 3 5-6 12, Fowler 1 0-0 2, Peterson 0 0-0 0, Kimberly 1 0-0 2, Kutruff 0 0-0 0, Noel 2 0-0 4, Ricketts 0 0-0 0, Witherow 0 0-0 0. Totals: 9 5-6 25.

#### Claysburg-Kimmel—50

Brumbaugh 0 0-0 0, A. Burk 3 0-0 8, Ickes 3 0-0 6, Kulick 4 0-0 11, Snyder 3 0-0 8, Glass 1 5-6 7, Al. Locke 0 1-2 1, P. Burk 3 2-2 9, Walter 0 0-0 0, Ac. Locke 0 0-0 0. Totals: 17 8-10 50.

Three-pointers: Reed, Matthews; Kulick 3, A. Burk 2, Snyder 2, P. Burk.

#### Score by Quarters

Glendale	10	6	4	5—25
Claysburg-Kimmel	10	18	13	9—50

## January 17, 2013: Bellwood 67 at Glendale 30

### Lady Vikings fall to Bellwood, 67-30

FLINTON — The Glendale girls basketball team was upended by Bellwood-Antis, 67-30, in an Inter-County Conference North matchup on Thursday evening.

Katelyn Matthews led the Lady Vikings with 18 points, while Cassidy Noel netted 10.

Glendale dropped to 5-7 overall and 2-5 in the ICC. The Lady Vikings host Curwensville on Monday.

Bellwood-Antis improved to 7-0 in ICC play.

The Lady Blue Devils also won the jayvee game, 58-27. Shannon Ricketts paced Glendale with 12 points.

#### Bellwood-Antis—67

Crook 0 0-0 0, Hollen 6 0-2 13, Ka. Leamer 7 3-4 19, Ke. Leamer 2 0-0 6, Swogger 7 0-2 14, Damiano 0 2-4 2, Mercer 2 0-0 4, Finn 0 0-0 0, Showalter 3 0-0 7, Claar 1 0-0 2, Crider 0 0-0 0, Carroll 0 0-0 0, Stevens 0 0-0 0, Whaley 0 0-0 0. Totals: 28 5-12 67.

#### Glendale—30

McMillen 0 0-0 0, Reed 1 0-0 2, McMurray 0 0-0 0, Matthews 7 3-4 18, Fowler 0 0-0 0, Peterson 0 0-0 0, Kimberly 0 0-0 0, Kutruff 0 0-0 0, Noel 4 0-0 10, Johnston 0 0-0 0, Plummer 0 0-0 0, Ricketts 0 0-0 0, Witherow 0 0-0 0. Totals: 12 3-4 30.

Three-pointers: Ka. Leamer 2, Ke. Leamer 2, Hollen, Showalter, Noel 2, Matthews.

#### Score by Quarters

Bellwood-Antis	23	25	12	7—67
Glendale	5	8	8	9—30

# January 14, 2013: Glendale 25 at Claysburg 50

By Rich Murawski  
Assistant Sports Editor

FLINTON — With her team trailing 28-20 early in the third quarter after Curwensville's Tiffany Carter connected on one of two free throws, Glendale's Katelyn Matthews seemingly stepped into the phone booth and exchanged the 'Lady Vikings' written on the front of her jersey for a red 'S'.

Matthews did her best Superman impression as she reeled off 13 third-quarter points and flirted with a triple-double to lead Glendale to a 50-47 win over the Lady Tide Monday evening at Donald A. Kitko Gymnasium.

The Lady Viking senior hit six of her seven field goal attempts in the quarter and added a free throw on the front end of a 1-and-1 to outscore Curwensville herself, 13-11. Her teammates chipped in five points to help Glendale knot the score at 38-38 after three.

"She made some shots that were a little spectacular," Curwensville head coach Rusty McCracken said. "She just

seemed to find the rim when she needed to."

Mathews finished with a game-high 25 points, while also ripping down 13 rebounds and wreaking havoc on the defensive end of the court with seven steals. She added four assists for good measure.

"When she came to the game she was feeling pretty sick," Glendale head coach John Matchock said. "Michael Jordan always had his good games when he was sick. But Katelyn rose up in that third quarter.

"I told the girls at halftime when we were down seven, 'we just have to try to win the third quarter and we'll take the fourth quarter from there.'"

While Matthews was leading the Lady Vikings to an impressive third-quarter run, Curwensville was having trouble finding the handle on the ball.

The Lady Tide only turned it over six times the entire first half, but lost the ball seven times in the third quarter.

"A big part of the problem was

we came down the court about seven times and threw the ball away five right at the beginning of the third," McCracken said. "We couldn't find our own teammates. We just didn't take care of the basketball, and we gave them all the momentum back that we took from them in the first half.

"I probably should have stopped things right there and settled us down. But I was hoping we'd settle down ourselves, but we didn't."

Ciara Strickland did her best to keep the Lady Tide even with Glendale as she netted six of her team-high 16 points in the third, including a sequence late in the stanza where she and Matthews answered each other's buckets on four consecutive possessions.

Matthews gave Glendale its first lead (36-34) of the game with a hard drive through the lane with less than a minute to go in the third, but Strickland responded with a soft jumper to tie the game at 36.

Courtney McMurray scored her only basket of the contest on Glendale's next possession when Kristal Peterson found her on a nice back door cut for an easy layup.

"It was like a different team came out of the locker room," Matchock said. "We didn't have school today, so that got us out of our rhythm and that is what I was worried about. It just seemed like we weren't moving real well in the first half.

"But that second half we were moving to the ball. We were looking for those back-door cuts. Everything just started to click. I attribute it all to our defense. We made some stops and got some steals and scored some layups, which helped."

Carter hit a pair of free throws to tie the game at 38 going into the fourth quarter where Glendale went on an 8-0 run to take a 46-38 lead.

Cassidy Noel asserted herself in the paint in the fourth, scoring four points in the run. Peterson assisted on her second bucket then netted her own field goal moments later to conclude the run.

Peterson led the Lady Vikings with six assists with McMurray adding four.

"We played excellent defense the second half," Matchock said. "To me, that is what won us the game. We made some nice passes, too. The second half we played much better. That's the team I like to see."

Curwensville ended its scoring drought with 4:22 left to play on a Strickland basket, and the Lady Tide eventually whittled the Lady Viking lead down to 49-47.

Katrina Seaburn had a pair of field goals in the run, while Becca Johnson added a jumper to make it a one-possession game with less than 10 seconds

remaining.

The Lady Tide fouled Matthews immediately, putting her on the line. She made one of two free throws and Curwensville called a timeout with 5.2 seconds left.

Curwensville was able to work the ball down the court, and Johnson fired a deep 3-point shot at the buzzer that fell short.

"We got the ball up the court with a chance to tie it at the end," McCracken said. "We moved the ball quick and just didn't get it to the rim."

Curwensville led 14-11 after one quarter, getting four points apiece from Strickland, Johnson and Tierra Shope and a basket from Seaburn.

Seaburn netted six more in the second quarter to help the Lady Tide take a 27-20 halftime lead.

Seaburn scored 12 points in the contest, while adding seven rebounds. Johnson added eight points and Shope scored six.

"Tierra is coming on, and she has given us some good minutes in the last couple games," McCracken said. "Combine that with Katrina and Ciara getting their points and Becca getting some shots off and getting her points. We did a lot of good things.

"Tiffany is still getting over being sick, but when she's out there she's either on the floor or has the ball in her hands. She's hustling. I think the team is getting better and working together."

Curwensville hit 11 of its 26 shots in the first half, while the Lady Vikings shot a dismal 31 percent from the field on 8-of-26 shooting.

"Curwensville is a good team," Matchock said. "They were hitting some shots and scoring some easy buckets on us in the first half because we weren't playing very good defense.

"And we missed some wide open shots in the first half that wasn't too happy about. But we buckled down in the second half."

Glendale hit 8 of its 13 shots in the third.

Noel and Kimberly each scored eight for the Lady Vikings

"Matthews is going to get her points, but it's nice to have the other girls chipping in a little bit," Matchock said. "Noel scored some points, Kimberly had eight. (Ashley) Reed came off the bench and played excellent defense. It was really a team effort tonight."

Glendale improved to 6-7 overall and overtook Curwensville for second place in the Moshannon Valley League with a 3-1 mark.

The Lady Tide dipped to 5-7 overall and 3-2 in MVL play.

Both teams return to action today. Glendale hosts Mount Union, while Curwensville welcomes Ridgway to Patton Hall.

The Lady Tide won the jayvee game, 45-35, behind a trio of double-digit scorers.

Shawna Guy scored 12 points, while Abby Dugo and Kayli Sedgwick each had 10. Shannon Ricketts scored 10 for Glendale.

## Curwensville—47

Thorp 0 2-2 2, Strickland 7 2-2 14, Carter 0 3-4 3, Johnson 4 0-0 8, Seaburn 6 0-0 12, Shope 1 4-9 6, Wassil 0 0-0 0. Totals: 18 11-17 47.

## Glendale—50

McMurray 1 0-0 2, Peterson 2 1-2 5, Noel 3 2-2 8, Kimberly 3 2-4 8, Matthews 10 5-9 25, Reed 1 0-0 2. Totals: 20 10-17 50.

## Score by Quarters

Curwensville	14	13	11	9—47
Glendale	11	9	18	12—50

## January 22, 2013: Mt. Union 65 at Glendale 28

### Glendale falls to Mt. Union

FLINTON — The Glendale girls basketball team dipped to 6-8 Tuesday night with a 65-28 loss to visiting Mount Union.

Katelyn Matthews led the Lady Vikings with nine points, while Katie Kutruff added eight.

The Lady Vikings fell to 2-6 in the Inter-County Conference. Mount Union improved to 3-5 in league play.

Shannon Ricketts scored 15 in the junior varsity's 36-26 loss.

Glendale is back in action Friday, traveling to Juniata Valley.

#### Mount Union—65

Drake 8 1-1 23, Knabie 1 0-0 2, White 5 3-5 13, Foor 4 0-0 11, Miner 2 0-0 6, Gilbert-Walker 4 2-4 10, Jenkins 0 0-0 0, Stinson 0 0-0 0. Totals: 24 6-10 65.

#### Glendale—28

McMillen 0 0-0 0, Reed 0 0-0 0, McMurray 1 0-0 2, Matthews 2 5-12 9, Peterson 1 0-0 2, Kimberly 0 0-0 0, Kutruff 4 0-2 8, Noel 2 0-0 5, Ricketts 1 0-0 2, Johnston 0 0-0 0, Plummer 0 0-0 0. Totals: 11 5-14 28.

Three-pointers: Noel; Drake 6, Foor 3, Miner 2.

#### Score by Quarters

Mount Union	18	13	16	18—65
Glendale	7	6	9	6—28

## January 29, 2013: Glendale 32 at Williamsburg 54

### Lady Vikings defeated, 54-32

WILLIAMSBURG — The Glendale girls basketball team fell to host Williamsburg, 54-32, on Tuesday evening.

Katelyn Matthews had 13 points and 10 rebounds for the Lady Vikings.

Glendale dropped to 6-9 overall and 2-7 in the Inter-County Conference. The Lady Vikings host Moshannon Valley on Wednesday.

Williamsburg improved to 3-6 in the ICC.

The Lady Blue Pirates won the jayvee game 28-4.

#### Glendale—32

McMillen 0 0-0 0, Reed 1 1-2 3, McMurray 0 0-0 0, Matthews 4 5-6 13, Kimberly 2 0-0 4, Kutruff 1 0-0 3, Noel 2 2-2 6, Johnston 0 0-1 0, Plummer 0 0-0 0, Ricketts 0 1-2 1, Witherow 0 0-0 0. Totals: 10 9-13 32.

#### Williamsburg—54

Crouch 0 0-0 0, McCall 7 1-2 18, Repine 3 2-2 8, Shaw 1 0-2 2, Stayduhar 4 0-0 8, A. Detwiler 1 0-0 3, M. Detwiler 2 3-4 7, Kennedy 1 0-0 2, Rhule 3 0-0 6, Peck 0 0-0 0. Totals: 19 6-10 54.

Three-pointers: Noel 2, Kutruff, McCall 3, A. Detwiler.

#### Score by Quarters

Glendale	6	7	6	13—32
Williamsburg	9	14	17	14—54

# Glendale girls topple Moshannon Valley on Senior Night

By Jon Christoff  
Sports Writer

FLINTON — It may have been due to the Senior Night festivities. Or perhaps a hangover from a 22-point loss at Williamsburg the night before.

No matter which way you look at it, the Glendale girls basketball team got all it wanted and more from visiting Moshannon Valley on Wednesday night.

The Lady Vikings handled the Damsels twice this season by an average of 21 points, but the third time was the charm for Mo Valley in giving its rival a contest.

The Damsels knocked down shot after shot, boxed out Glendale and limited it to single looks throughout, but despite the improved effort, it still didn't result in a win for Mo Valley.

Lady Viking senior Katelyn Matthews scored a game-high 23 points and pulled down a team-high nine rebounds in a hard-fought 40-33 triumph.

"They played a lot better than they did the first two times," said Glendale head coach John Matchock of Mo Valley. "I was impressed. They took away our

inside game for the first half and most of the third quarter. They made us shoot from the outside, and nothing was falling in tonight.

"We stuck with the game plan — being patient with the ball — and, luckily, we were able to hang on and pull out a win."

The last time the teams met, the Lady Vikings held a 14-3 lead after the opening quarter.

If it wasn't for a Matthews 3-pointer — the only one made in the game — Glendale wouldn't have broken that mark in a slow-paced first half.

Matthews' trifecta made it a 17-13 contest with 2 seconds left on the second quarter clock, but it wasn't until early in the fourth quarter that the Lady Vikings' defense put the game away.

Mo Valley's Emily Smith knocked down a jumper with 6 minutes, 11 seconds to play to cut the deficit to 32-29, but Glendale stopped the Damsels from getting any closer.

The Lady Vikings only scored four points in a span of nearly four minutes, but Mo Valley couldn't keep possession of the ball on the Glendale half of the

court due to the pressure defense.

The Damsels never got closer than five after that.

"We pride ourselves with our defense," Matchock said. "We win and stay in games with our defense. In the first half, we got a lot of steals (10) but we just couldn't convert."

"In the beginning of the fourth quarter, I put our zone press in and we were getting turnovers off that. We weren't converting all of them, but we got the momentum on our side and that's what carried us the rest of the game."

Mo Valley (2-15) made nearly 50 percent of its shots in the second half, which included a 4-for-5 effort from Ally Kronenwetter — who scored a team-high nine points to go along with a game-high 11 boards.

Smith and Haley Stodart, who was 4-for-6 from the foul line in the final quarter, each added eight in the loss.

"I thought we did great compared to the first time we played them," said Mo Valley interim head coach Michelle Grube. "We tried to tell them that we had to

work the ball to the middle against their press, but we kept getting trapped and that was definitely a big factor at the end."

"They're a great group of girls and I've worked with them since they were in fifth or sixth grade. I really enjoy them. They have a lot of heart and they give 110 percent. They have a lot of talent and potential, and I always tell them I expect a lot from them because I know what they can do. They've really improved."

Stodart and Smith staked the Damsels to a 4-0 lead before Glendale's offense could get out of park.

The Lady Vikings began the contest 0-for-its-first-6 shots from the field and missed its first six attempts at the foul line before Caitlin Kimberly's bucket with 2:54 left on the clock in the first.

Matthews made consecutive jumpers to give Glendale the lead before Kronenwetter made one of two from the charity stripe to set the score at 6-5 after one.

The Damsels scored six of the first eight points of the second before Glendale ended on a 7-2 run.

Samantha Matchock, Smith and Tayia Swoope led Mo Valley's charge, while Matthews and a pair of Kristal Peterson foul shots forged Glendale ahead at the break.

"We've had a much bigger (halftime) deficit against them," Grube said. "We knew we were in it and the girls really wanted to win it. They weren't hanging their heads or anything at halftime. They knew they were right in it and tried to go out and get the win."

Matthews finished the first half with 5-of-10 shooting, while the rest of her teammates combined to knock down just two of their 16 attempts.

The Lady Vikings resolved their shooting woes in the third, however, as they converted 6 of 13 attempts with five different players making at least one field goal.

Glendale finished the contest 18-for-55, while Mo Valley made 13 of 34 attempts.

"I told them at halftime that we needed to get back to our game," said coach Matchock. "I think we started to get back to where we needed to be in the third quarter. We stuck with it and were able to pull it out."

"We just couldn't hit anything in the first half. I think we settled down a little bit and played with a little more confidence. Eventually, the shots started to fall."

Glendale, which improved to 7-9, recognized Matthews, Kimberly, Cassidy Noel and Ashley Reed in a pregame ceremony.

The Lady Vikings are back in action Friday at West Branch, while Mo Valley entertains Mount Union.

Glendale won the jayvee game, 17-15. Shannon Ricketts led all scorers with 10 points in the win, while Samantha Matchock scored eight to lead the Damsels.

#### Moshannon Valley—33

H. Kitko 1 0-12, Smith 3 2-2 8, Stodart 2 4-6 8, Kronenwetter 4 1-2 9, Swoope 2 0-0 4, Matchock 1 0-0 2, Smeal 0 0-0 0, M. Kitko 0 0-0 0. Totals: 13 7-11 33.

#### Glendale—40

McMurray 1 0-0 2, Reed 0 0-0 0, Noel 1 1-2 3, Kimberly 1 0-0 2, Matthews 11 0-6 23, Kutruff 2 0-2 4, Peterson 2 2-2 6. Totals: 18 3-12 40.

Three pointers: Matthews.

#### Score by Quarters

Mo Valley	5	8	12	8—33
Glendale	6	11	13	10—40



Photo by Jon Christoff

Glendale's Caitlin Kimberly brings the ball upcourt during Wednesday's game against Mo Valley. Kimberly had five steals in the win.

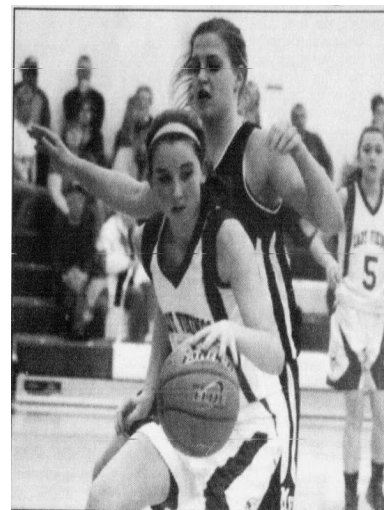


Photo by Jon Christoff

Glendale's Katelyn Matthews, front, dribbles while Moshannon Valley's Tayia Swoope defends during Wednesday's contest. Matthews scored 23 points and had nine rebounds to lift the Lady Vikings to a 40-33 win.

## February 1, 2013: Glendale 18 at West Branch 52

By Jon Christoff  
Sports Writer

ALLPORT — The West Branch girls basketball team entered Friday's contest with

Glendale with a Progressland-best 10 wins on the season due mostly to its overall team speed and athleticism.

In a blink of an eye, the Lady Warriors can change the complexion of any game.

After a strong start, the Lady Vikings blinked.

Glendale took a 4-2 lead late in the first quarter before the hosts gained control, thanks to their suffocating defense.

West Branch forced 40 turnovers in the contest and its 16-0 run that spanned 6 minutes, 26 seconds put the game — and, more than likely, the Moshannon Valley League title — on ice.

After the sluggish start, the Lady Warriors cruised to a 52-18 win.

"We needed some energy because we were flat with our energy tonight," said Lady Warriors head coach Dan Socash, whose team improved to 6-0 in the MVL where they have a two-game lead with two games to play.

"We picked it up with our press for that time. We were tired and it looked like they were, too. It was just one of those little spurts that we needed. We picked it up right there."

Glendale's defense featured a triangle-and-two and a box-and-one on West Branch seniors McLesha Ahlberg and Janene Couteret.

The Lady Vikings flustered the pair at times throughout the first half, but the Lady Warriors' defense made sure that their lower-than-normal output was a moot point.

Glendale finished the half with 4-of-17 shooting and made just eight on 39 attempts in the contest.

"They're a faster team than us," Lady Vikings head coach John Matchock said. "I'm not going to sugarcoat it. So, I told them, 'we've got to slow it down, run our offense and make good passes.' We started off playing really good defense."

With Couteret and Ahlberg combining to score just 17 points, it was up to the other six West Branch regulars to pick up the slack.

Taylor Kolesar scored a game-high 11 points off the bench for the Lady Warriors, who got nine points from Christie Sabol — who was a key component in the 16-0 run.

"I told the girls before the game," said Matchock, "that we want the other three girls to beat us. I thought we played really well in the first half. Offensively, we weren't doing it, but the defense was keeping us in the game — which it has all year."

Of Sabol's nine points, eight came in the first half during the 6-minute-plus span that put the game away.

"Some of our girls were getting a little frustrated," said Socash of Glendale's defense. "They're not used to seeing that. I thought the other girls stepped up really nice."

"Taylor started out cold, but then she got hot. We needed her and she stepped up. She played big in there. She started finishing and she can do that. ... And, Christie came up big during that run."

Glendale turned the ball over at least eight times in each stanza and never found any rhythm on the offensive end, and a large reason why was the Lady Warriors' ability to limit the Lady Vikings to one shot.

Despite West Branch only out-rebounding it 41-33, Glendale struggled to get multiple looks and didn't score once on a put-back in the paint.

Ahlberg and Sabol finished the night with 10 and 9 rebounds, respectively, while the Lady Vikings got eight apiece from Courtney McMurray and Katelyn Matthews — who scored a team-high eight points.

"Offensively, I don't know what's going on with us," Matchock said. "Sometimes I see glimpses of us getting better, but then it just goes away. I don't have any answers right now."

"We work on shooting every practice. It's not like we don't practice this stuff, but when we get into games, it's like it's a totally different environment. We were getting one shot. If it didn't go in, we weren't getting the rebound."

The win finished the week strong for the Lady Warriors, who have held their last two opponents to just 25 points combined. Of those eight quarters played, West Branch has recorded three quarters where it has yielded just one point.

Socash knows his team will have to put forth a similar effort next week if they are to avenge any of their four losses.

West Branch begins its revenge gauntlet on Tuesday when it travels to state-ranked Bellwood-Antis.

The Lady Warriors (11-4) finish the week with contests against Bald Eagle Area, Juniata Valley and Claysburg-

Kimmel — all of which claimed wins in their first meeting with West Branch.

"I told them I'm excited for next week to see what we can do," said Socash. "Win or lose, we're going to see what we need to work on. As long as we can keep the right mental attitude that these are teams we can beat ... they're going to put runs on, but I want us to put runs on, too."

"We'll be facing adversity one night after another. We won't have time to dwell on any of them."

Glendale (7-10) travels to face Juniata Valley this afternoon.

The Lady Warriors won the jayvee contest, 44-18.

West Branch's Taylor Pedmo led all scorers with 12, while Katie Kutruuff netted a team-high eight points in the loss.

### Glendale—18

McMurray 1 1-4 3, Matthews 4 0-2 8, Peterson 0 0-0 0, Kimberly 1 0-0 2, Noel 1 1-2 3, Reed 0 0-0 0, Kutruuff 1 0-0 2, Fowler 0 0-0 0, Ricketts 0 0-0 0, McMillen 0 0-0 0, Johnston 0 0-0 0, Plummer 0 0-0 0. Totals: 8 2-8 18.

### West Branch—52

Nye 2 0-0 5, Couteret 4 2-6 10, Ahlberg 3 0-0 7, Sabol 3 3-4 9, McCracken 1 0-0 2, Croyle 2 0-0 4, Kolesar 5 1-2 11, Miller 1 0-0 2, Pedmo 0 0-0 0, Rocky 1 0-0 2, Prinkey 0 0-0 0, Hayward 0 0-0 0, Trude 0 0-0 0. Totals: 22 6-12 52.

Three-pointers: Nye, Ahlberg.

### Score by Quarters

Glendale	4	5	9	0—18
West Branch	8	14	17	13—52

## February 3, 2013: Glendale 43 at Juniata Valley 53

# Glendale girls stopped by Juniata Valley, 53-43

ALEXANDRIA — The Glendale girls basketball team fell to Juniata Valley on Saturday afternoon, 53-43.

Kristal Peterson led the way for the Lady Vikings with 14 points and connected on two 3-pointers in the game.

Katelyn Matthews scored 12 points, while Cassidy Noel splashed two treys.

The Lady Hornets won the junior varsity game, 33-18. Brittney Witherow led the Lady Vikings with six points.

Glendale dipped to 7-11 and

visits Curwensville tonight.

### Glendale—43

Reed 0 1-2 1, McMurray 0 1-2 1, Matthews 3 6-10 12, Peterson 6 0-0 14, Kimberly 3 0-1 6, Kutruff 0 0-2 0, Noel 3 1-4 9, Ricketts 0 0-2 0. Totals: 15 9-23 43.

### Juniata Valley—53

Miller 0 0-0 0, Varner 1 0-1 2, Leri 1 3-3 5, Myers 2 1-3 5, Johnson 1 0-0 2, Lechrone 2 4-4 8, Keller 0 0-0 0, Zimobile 8 11-14 27, Ammerman 1 2-6 4, Smith 0 0-0 0. Totals: 16 21-31 53.

Three-pointers: Noel 2, Peterson 2.

### Score by Quarters

Glendale	11	10	10	12—43
Juniata Valley	10	12	18	13—53

## February 4, 2013: Glendale 39 at Curwensville 46

By Rich Murawski  
Assistant Sports Editor  
CURWENSVILLE

Curwensville head girls basketball coach Rusty McCracken had to be experiencing a little déjà vu Monday evening at Patton Hall.

Just like in the earlier meeting this season between the squads, the Lady Tide took a comfortable lead into halftime against Moshannon Valley League foe Glendale, only to watch it evaporate in a second half dominated by Lady Viking Katelyn Matthews.

The difference Monday night was Curwensville withstood the Glendale onslaught and came out with a 46-39 win.

Curwensville led 27-20 at halftime on Jan. 21 at Donald A. Kitko Gymnasium, but dropped a 50-47 decision to Glendale thanks to a 25-point effort from Matthews.

The Lady Viking senior was at it again Monday night, scoring 24 points and grabbing 15 rebounds to bring her team back from a 24-10 halftime deficit.

"You have to give Glendale credit," McCracken said. "They weren't going to sit back and just let us have it. They came back and gave us a little bit of a scare.

"And Matthews did pretty much the same as in the game up there. She took over the second half and scored a lot of points. She's tough. She has such a long reach and a long step, and she can get to places where the defense doesn't think she can get to.

"And she has that nice little bank shot. She does a lot of nice things."

But while Matthews and the Lady Vikings were on the comeback trail, the Lady Tide stayed the course, continuing to force turnovers like they did in the first half to help them build their 14-point lead.

Becca Johnson notched 10 steals to go with her 10 points to lead Curwensville as the Lady Vikings fumbled the ball away 31 times in the game, including nine in a third quarter that saw them outscore the hosts, 15-8.

"Our defense kept us in it, but our offense committed too many

turnovers," Glendale head coach John Matchock said. "You can't win ball games with all those turnovers."

Curwensville got out to a 13-7 lead in the first quarter, getting a pair of buckets from both Johnson and Tiffany Carter to lead the way.

The Lady Tide ran off the first eight points of the second quarter, highlighted by steals and coast-to-coast layups from Tierra Shope and Ciara Strickland.

"We more aggressive tonight than we were in our last meeting," McCracken said. "We kept getting the steals. Not that we always finished, but we were at least taking control of the basketball."

Curwensville led 21-7 at that point as the Lady Vikings didn't score until Caitlyn Kimberly's drive to the hoop fell with 1:28 left in the half.

Glendale was 1-for-13 from the field in the second quarter and 3-for-26 in the half.

"If you want to win games, especially close ones like this, you can't afford to be missing

easy shots," Matchock said. "Almost every possession is key and we just didn't finish tonight."

A Strickland 3-pointer gave Curwensville its biggest lead of the night, 24-9, and Glendale's Ashley Reed knocked down one of two free throws to make the score, 24-10, at the half. Strickland paced the Lady Tide with 11 points.

Glendale came out of the break looking like a new team and quickly reeled off six points before a Johnson jumper briefly halted the momentum.

Back-to-back possessions with Matthews scoring on drives to the hoop got the Lady Vikings to within six of the lead, 26-20, halfway through the third quarter.

The teams traded buckets the rest of the frame and Curwensville took a 32-25 lead into the final stanza.

There, the Lady Tide got on a roll, outscoring the visitors, 8-4, to get the lead back to double digits at 40-29.

A Heather Thorp offensive rebound and putback, followed by a Katrina Seaburn layup finished off the run.

Seaburn scored nine points for Curwensville, with Shope and Thorp adding six each.

"It wasn't just one or two people," McCracken said. "We had pretty balanced scoring up and down the lineup. Everyone contributed.

"They did the job defensively, and we boxed out well at times and got some key rebounds. It was just a total effort on everybody's part."

Glendale had one last run left in it, however, and started whittling away at the Lady Tide lead once more.

Matthews scored six points in a 10-2 run that got Glendale to within a possession of the lead, 42-39. Reed and Cassidy Noel also scored buckets that put Glendale just three points down with a minute left on the clock.

"I'll give the girls credit. They kept fighting," Matchock said. "But digging that deep of a hole is just hard to come back from. The girls didn't quit. We got it down to three with a minute left.

"But we had to start fouling and they made their shots."

Strickland canned a pair of free throws and Thorp connected on a runner to help the Lady Tide hold on for the win.

"They just didn't back off, and they kept chipping away and chipping away," McCracken said of Glendale. "But we did find a way to answer when we needed to.

"Ciara hit a couple foul shots. Becca hit a jumper near the end

that countered their attack. And the big lead in the beginning was the key. We weren't as aggressive in the second half as we were in the first half, but we did just enough to win the game."

"That first half, we just dug ourselves too deep of a hole,

going down 14 at halftime," Matchock said. "We chipped away and chipped away and got it down to three. But the tale of our season has been turnovers and missed layups. And we had that again tonight."

Curwensville improved to 7-9 overall and 5-2 in the MVL.

Glendale dipped to 7-13 and 4-4.

The Lady Vikings won the jayvee game, 43-41, behind double-digit efforts from Shannon Ricketts (14) and Katie Kutruff (13). Shawna Guy paced the Lady Tide with 16.

Curwensville is back in action tonight at Sheffield, while Glendale travels to Harmony on Wednesday.

**NOTE:** The Lady Tide victory snapped Glendale's 11-game winning streak against Curwensville. The last win for the Lady Tide came on Feb. 16, 2007.

### Glendale—39

McMurray 2 0-0 4, Peterson 0 0-0 0, Noel 2 0-0 4, Kimberly 2 0-1 4, Matthews 9-10 24, Reed 1 1-4 3, Kutruff 0 0-0 0, McMillen 0 0-0 0, Witherow 0 0-0 0, Ricketts 0 0-0 0, Johnson 0 0-0 0. Totals: 14 10-14 39.

### Curwensville—46

Thorp 3 0-1 6, Strickland 4 2-2 11, Carter 2 0-2 4, Seaburn 2 5-8 9, Johnson 5 0-0 10, Shope 2 2-2 6. Totals: 18 9-15 46.

Three-pointers: Matthews; Strickland.

### Score by Quarters

Glendale	7	3	15	14—39
Curwensville	13	11	8	14—46



## February 6, 2013: Glendale 60 at Harmony 24

By Andy Stine  
Sports Writer  
WESTOVER —

The Glendale girls basketball team wasted no time in building a lead on Wednesday evening, which led to one of the Lady Vikings' best offensive displays of the season.

Katelyn Matthews scored 27 points and had nine rebounds, while getting a solid defensive effort from all in the Lady Vikings' 60-24 win over Harmony. Glendale's 60 points marked a new season-high for the Lady Vikings, who's previous game-high was bested by two points.

"We played really well to start off," said Glendale head coach John Matchock. "We played really good defense. That's one of the things we wanted to concentrate on to start the game was to play real good defense and not let them drive on us and get some easy baskets in transition."

"We did a lot better on defense than we did on Monday night against Curwensville (a 46-39 loss). Hopefully that's a sign that we're going to end the season on a good note."

"It feels good to score some points because there have been times this season we haven't produced offensively. I just didn't know what the answers were. I know one of the answers was we didn't turn the ball over as much tonight. That's all it takes. Take care of the basketball and you'll score points."

"It gets so frustrating because you know the girls are better than what they're playing," said Lady Owl head coach Ralph Butterworth. "That's the part that is hard. They had a good second quarter and they know they can play. It's just so frustrating for them and for me to figure out what has to be done."



**Matthews**



**Kimberly**

Glendale pulled out to a 16-0 lead to open the game before giving up Harmony's first bucket to Deidra Woodward with 25 seconds left in the first quarter. But on the Lady Vikings' last possession of the period, Matthews was fouled in the corner behind the three-point line on her shot.

Matthews, who went 9-for-9 from the charity stripe on the evening, sunk all three free throws to give her a team a 19-2 lead after the first eight minutes.

"I think she just played real well," said Matchock. "She wanted the ball, she finished, she made her layups, which we've been lacking as a team the last couple of games."

After falling behind, the Lady Owls matched Glendale's effort in the second quarter. Both teams ended the period with 14 points. Lady Owl sophomore Shannon Dyda scored four points in the period, while Woodward had three points and Stephanie Maseto splashed one of Harmony's two treys in the game.

Butterworth commented after the game that he was proud of what he saw from Woodward, who ended the game with five points and four rebounds.

"Deidra has worked so hard," Butterworth said. "All year, I've been saying, 'Deidra, shoot. Deidra, shoot.' Tonight she started off good. She had five points. She played well."

"I know we can play. We played a good second quarter. I don't know if we're just happy with a good quarter. They proved that they can do it and I just don't know why they just can't do it the whole game. We had some shots. The shots just didn't fall in."

Glendale went on another offensive outburst to start the second half. The Lady Vikings outscored Harmony 20-3 in the third quarter, including getting six of Caitlin Kimberly's 12 points in the stanza.

"She had a good game offensive and defensively, too," said Matchock of Kimberly. "She rose up a little tonight. That's good to see."

"That's what we need if we want to finish strong these last two games. It can't be just Matthews scoring. It has to be some of these other girls scoring and tonight Kimberly played a good game."

Lindsay Welteroth scored five of her seven points in the fourth quarter, including a three-pointer on the Lady Owls' last possession of the game. Cassidy Noel also hit a three in the fourth quarter to end her night with 12 points.

"Harmony has a good coach," said Matchock. "They're a young team. They're taking their lumps, but tonight they weren't giving up. They were playing strong right to the end. That says something about the coaching staff here and about the girls they have. They like to play basketball."

"The girls don't quit," said Butterworth. "They try their best. I wish I had an answer every night for what I'm doing wrong and what I can do to make them better."

"I can see improvement in them. They all do something good at certain times. We just can't get everybody to do everything good at the same time."

In jayvee action, Glendale defeated Harmony, 30-15.

Shannon Ricketts led the Lady Vikings with 11 points, while Alyssa Raho had six for the Lady Owls.

The Lady Vikings (8-12, 5-3 in the Moshannon Valley League) host Claysburg-Kimmel on Friday, while Harmony (0-19, 0-8 MVL) entertains the Lady Bulldogs tonight.

### Glendale—60

McMurray 0 2-2 2, Matthews 9 9-9 27,

Poterson 1 2-2 4, Kimberly 6 0-0 12, Noel 5 0-0 12, Reed 0 1-2 1, Ricketts 1 0-0 2, Johnston 0 0-0 0, McMillen 0 0-0 0, Kutruff 0 0-0 0, Witherow 0 0-0 0, Fowler 0 0-0 0, Plummer 0 0-0 0. Totals: 22 14-15 60.

### Harmony—24

Maseto 1 1-2 4, Brink 1 0-0 2, Woodley 0 0-0 0, Wortman 1 0-4 2, Dyda 1 2-2 4, Woodward 2 1-1 5, Welteroth 3 0-0 7, Hull 0 0-0 0, Raho 0 0-0 0, Nailey 0 0-0 0, Stiver 0 0-0 0, Mulhollen 0 0-0 0. Totals: 9 4-9 24.

Three-pointers: Noel 2; Maseto, Welteroth.

### Score by Quarters

Glendale	19	14	20	7—60
Harmony	2	14	3	5—24

**February 13, 2013: Glendale 27 at Bellwood 72**

## Glendale toppled by Bellwood-Antis, 72-27

BELLWOOD — The Glendale girls basketball team fell to Bellwood-Antis on Wednesday evening, 72-27.

Katelyn Matthews led the Lady Vikings with 14 points, while Kristal Peterson and Cassidy Noel each scored four points.

The Lady Devils won the junior varsity game, 50-16. Katie Kutruff scored four points for Glendale.

Glendale hosts Claysburg-Kimmel tomorrow night in its season finale.

### Glendale—27

Reed 1 0-0 3, McMurray 0 0-0 0, Matthews 6 2-5 14, Fowler 0 0-0 0, Peterson 2 0-0 4, Kimberly 1 0-0 2, Kutruff 0 0-0 0, Noel 2 0-0 4. Totals: 12 2-5 27.

### Bellwood-Antis—72

Hollen 4 1-2 10, Swauger 2 2-2 7, Ke. Leamer 13 0-0 26, Ke. Leamer 3 0-0 8, Mercer 3 1-2 8, Damiano 1 0-0 2, Finn 1 0-0 3, Claar 1 0-0 2, Crider 2 0-0 6. Totals: 30 4-6 72.

Three-pointers: Reed; Hollen, Swauger, Ke. Leamer 2, Mercer, Finn, Crider 2.

### Score by Quarters

Glendale	6	6	2	11—27
Bellwood-Antis	25	26	13	6—72

**February 15, 2013: Claysburg 35 at Claysburg 24**

## Glendale drops finale, 35-24

FLINTON — The Glendale girls basketball team ended its season Friday with a 35-24 loss to visiting Claysburg-Kimmel at Donald A. Kitko Gymnasium.

Katelyn Matthews led the Lady Vikings with nine points.

Glendale finished with an 8-14 record overall and 3-11 in the Inter-County Conference.

The Lady Bulldogs won the jayvee game, 38-13. Brittney Witherow scored four points for Glendale.

### Claysburg-Kimmel—35

Brumbaugh 2 0-0 4, Burk 1 2-3 5, Ickes 7 1-5 5, Kulick 1 4-4 6, Snyder 0 0-0 0, Glass 2 0-0 5, Locke 0 0-0 0, Walter 0 0-0 0. Totals: 13 7-9 35.

### Glendale—24

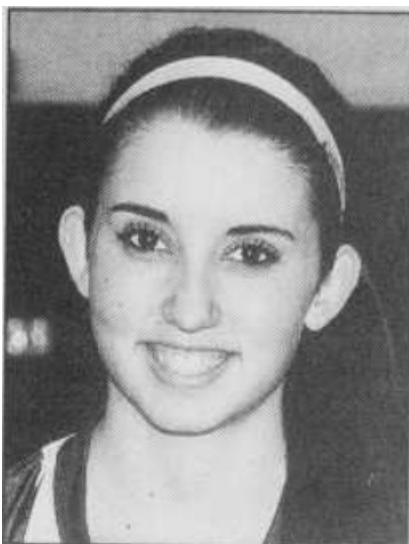
Reed 2 0-0 6, McMurray 3 0-0 6, Matthews 4 1-2 9, Peterson 0 0-0 0, Kimberly 1 0-0 3, Kutruff 0 0-0 0, Noel 0 0-0 0. Totals: 10 1-2 24.

Three-pointers: Burk, Glass; Reed 2, Kimberly.

### Score By Quarters

Claysburg-Kimmel	9	6	9	11—35
Glendale	5	6	5	8—24

# 2012-13 Girls Basketball All-Stars



**Katelyn Matthews**  
Glendale  
First Team

Katelyn Matthews, Sr., Glendale: If the top award in Progressland was the Most Valuable Player, Matthews would have perhaps a bigger claim than anyone else.

The Lady Viking senior led her team in pretty much every statistical category, including a team-high 15.6 points per contest. Without her, Glendale wouldn't have averaged 20.

Matthews shot 44 percent from the field for the season (131-for-295), and averaged 12.1 rebounds per contest to go along with 35 blocks and 45 steals.

Matthews was also unselfish, as her 38 assists were third on the squad.

Moshannon Valley League opponents trembled at Matthews' presence, as she terrorized opponents for an average of 20.9 points in eight league contests.

Matthews ended the season with seven 20-point games.

## Vikings named to MVL team

### GIRLS

Melesha Ahlberg (West Branch), Janene Couteret (West Branch), Rebecca Johnson (Curwensville), Katelyn Matthews (Glendale), Ciara Strickland (Curwensville)

In basketball, three girls from Bellwood-Antis were named to the North Division girls first team — Katy Leamer, Ellen Crook and Bailey Swogger. They were joined by Juniata Valley's Haley Myers and Abbie Zinobile and Glendale's Katelyn Matthews.

### GIRLS BASKETBALL SOUTH DIVISION

**FIRST TEAM** — Katy Leamer (Bellwood-Antis), Tynita White (Mount Union), Abby Kulick (Claysburg-Kimmel), Haley Myers (Juniata Valley), Abbie Zinobile (Juniata Valley), Katelyn Matthews (Glendale), Ellen Crook (Bellwood-Antis), Bailey Swogger (Bellwood-Antis).

**HONORABLE MENTION** — Janene Couteret (West Branch), Kara Stayduhar (Williamsburg), Madison Detwiler (Williamsburg), Madison Ickes (Claysburg-Kimmel).

## 2012-13 Progressland Girls Basketball Honor Roll

### 2012-2013 Girls Basketball All-Stars

#### First Team

Melesha Ahlberg	West Branch	Senior
Janene Couteret	West Branch	Senior
Katelyn Matthews	Glendale	Senior
Breanna Peters	Clearfield	Senior
Briana Rusnak	Philipsburg-Osceola	Senior
Ciara Strickland	Curwensville	Sophomore

#### Second Team

Dakota Farmery	Clearfield	Senior
Becca Johnson	Curwensville	Senior
Karli Rorabaugh	Purchase Line	Senior
Katrina Seaburn	Curwensville	Senior
Abby Showers	Philipsburg-Osceola	Sophomore
Aiyssa Wharton	Clearfield Alliance	Senior

#### Honorable Mention

Haylee Hayward	Philipsburg-Osceola	Freshman
Melanie Hilliard	Purchase Line	Senior
Hannah Kitko	Moshannon Valley	Freshman
Cassidy Noel	Glendale	Senior
Brianna Nye	West Branch	Senior
Christie Sabol	West Branch	Junior
Lindsay Welteroth	Harmony	Junior

#### Player of the Year

Breanna Peters, Clearfield

#### Coch of the Year

Dan Socash, West Branch

### TEAM STATISTICS

Scoring Offense				Scoring Defense				Free Throw Percentage			
Team	GP	Pts.	Avg.	Team	GP	Pts.	Avg.	Team	FTM	FTA	FT%
West Branch	23	1144	49.7	CACS	22	776	35.3	P-O	218	360	60.6
P-O	23	1015	44.1	West Branch	23	880	38.3	Clearfield	174	311	55.9
Curwensville	24	1054	43.9	Glendale	22	966	42.0	Curwensville	169	308	54.9
Clearfield	22	876	39.8	Curwensville	24	1059	44.1	Glendale	137	287	47.7
Purchase Line	20	716	35.8	P-O	23	1104	48.0	Mo Valley	125	264	47.3
Glendale	22	770	35.0	Clearfield	22	1085	49.3	Purchase Line	109	235	46.4
CACS	22	698	31.7	Purchase Line	20	991	49.6	Harmony	136	296	45.9
Mo Valley	22	647	29.4	Mo Valley	22	1221	55.5	CACS	102	241	42.3
Harmony	22	559	25.4	Harmony	22	1290	58.6	West Branch	154	364	42.3

### INDIVIDUAL

#### Scoring (15 GP minimum)

Player	FG	FTM	%	Pts.	Avg.
Wharton, CACS	166	81	27	440	20.0
Matthews, G	130	79	5	344	15.6
Peters, CL	109	78	7	303	15.2
Farmery, CL	109	44	0	262	14.6
Rusnak, PO	111	91	2	315	14.3
Couteret, WB	125	52	2	304	13.2
Showers, PO	111	58	21	301	13.1
Strickland, CU	129	38	13	309	12.9
Ahlberg, WB	101	19	40	261	11.3
Johnson, CU	112	19	22	265	11.0
Rorabaugh, PL	81	20	0	182	10.7
Seaburn, CU	86	47	0	219	10.4
Welteroth, H	66	22	37	191	9.1

#### Free Throw Percentage (40 FTA minimum)

Player	FTM	FTA	FT%
Strickland, CU	38	51	74.5
Rusnak, PO	91	127	71.7
Seaburn, CU	47	72	65.2
H. Kitko, MV	28	43	65.1
Farmery, CL	44	69	63.8
Peters, CL	78	123	63.4
Stover, PL	31	52	59.6
Matthews, G	79	141	56.0
Croyle, WB	29	52	55.8
Hayward, PO	24	43	55.8
Showers, PO	58	105	55.2

#### Three-Pointers Per Game (15 GP minimum)

Player	GP	%	Avg.
Welteroth, H	21	37	1.8
Ahlberg, WB	23	40	1.7
Nye, WB	23	27	1.2
Wharton, CACS	22	27	1.2
H. Kitko, MV	22	24	1.1
Johnson, CU	24	22	0.9
Showers, PO	23	21	0.9
Noel, G	22	15	0.7

#### Rebounds Per Game (15 GP minimum)

Player	GP	Rebs	Avg.
Wharton, CACS	22	259	12.3
Peters, CL	20	243	12.2
Matthews, G	22	266	12.1
Rusnak, PO	23	270	11.7
Seaburn, CU	21	223	10.6
Hilliard, PL	20	208	10.4
Farmery, CL	18	181	10.1
S. Folmar, CACS	22	164	7.5
R. Passmore, CACS	22	146	6.6
Rorabaugh, PL	17	111	6.5

<b>Players</b>	<b>Points</b>	<b>Three's</b>
Katelyn Matthews	346	5
Cassidy Noel	129	15
Kristal Peterson	78	2
Caitlin Kimberly	66	2
Ashley Reed	42	6
Courtney McMurray	30	0
Katelyn Kutruff	22	2
Shannon Ricketts	21	0
Paige Potter	11	2
Anna Fowler	4	0
Meagan McMillen	2	0
Kianna Johnston	2	0
Brittany Witherow	2	0
<b>Totals</b>	<b>755</b>	<b>34</b>