

2009-2010 Season

Glendale girls basketball team returns plenty of experience

By Jaclyn Yingling
Sports Editor

FLINTON — With six letter-winners back, the Glendale girls basketball team figures to be in good shape for the 2009-10 season.

The Lady Vikings return senior point guard Brooke Legrand, who has been running the Lady Vikings offense for three years.

Glendale also has juniors Morgan Biddle, Sara Tarr and Brooke Wilson, along with sophomores Kelli McGarvey and Cassie Spangle.

Glendale will have to fill the void left by their career leader in three-point shooting, Samantha Noel, who was also third on the team in scoring last season.

"We have some experience coming back," said Lady Vikings head coach John Matchock. "We lost our main three-point shooter in Samantha, but I think we have a decent main group coming back this year.

"All of the girls except Legrand are underclassmen, so that helps too. We had a lot of younger girls playing last year, so they have that year under their belts and are more experienced."

The Lady Vikings do have some offensive weapons back, including Legrand, who was second on the team in scoring with 9.3 points per game last season.

Leading scorer Biddle also returns after averaging 10.9 points per game last year. Biddle will be key for the Lady Vikings this season under the hoop.

"Legrand will be our starting point guard," Matchock said. "She's been doing that for three years, and she will keep that spot. Morgan Biddle will be underneath. Our past two scrimmages haven't gone the way I thought they would go. I'm kind of debating on a few things, so I'm just going to wait and see how things go this week. But Legrand and Biddle are definitely two of our starters."

Lady Vikings letterwinners — The Glendale girls basketball team returns six letterwinners to its 2009-10 squad. In front, from left, are Brooke Wilson, Sara Tarr and Cassie Spangle. In back are Brooke Legrand, Morgan Biddle and Kelli McGarvey.

McGarvey (5.9 ppg), Tarr (5.6 ppg), Wilson (2.1 ppg) and Spangle (2.1 ppg) all look to improve their scoring averages from a year ago as well.

The Lady Vikings have 15 girls on the roster and almost all of them have been playing since junior high. That helps Matchock, who has coached most of the girls since they were in seventh grade.

"I feel pretty good about this team," he said. "Almost all of them have played in junior high and had some pretty good junior high teams. They are athletic, and I think that will help. When it comes time to go to our bench, I won't be too hesitant to do that. Even the two freshmen that we had come up had really good junior high seasons last year. They've been doing well in practice."

So far, Matchock says Biddle and Legrand have their starting spots locked up. The other three spots will go to whoever steps up over this next week of practice.

The Lady Vikings struggled with being inconsistent last season, going 9-13 overall. Matchock hopes to correct that this season by returning to fundamentals.

"I think we have some girls with a lot of talent," he said. "I don't think they've really shown what they can do. I think if they stick with the fundamentals and continue to work hard, we will be successful. We just need to take it one game at a time and continue to improve each night."

Glendale opens its season on Monday at West Branch.

Roster

Seniors

Avril Gedman, *Brooke Legrand.

Juniors

*Morgan Biddle, Megan Gates, Annette Gingerich, Hillary Holes, *Sara Tarr, *Brooke Wilson.

Sophomores

Samantha Barnhart, Marissa Grega, Lynda Krulise, *Kelli McGarvey, *Cassie Spangle.

Freshmen

Caitlin Kimberly, Katelyn Matthews.

*Denotes returning letterwinners.

Schedule

December

14—at West Branch; 16—Juniata Valley; 18—at Harmony; 23—Curwensville; 29—vs. Blacklick Valley at Williamsburg Christmas Tournament, 6 p.m.; 30—vs. Williamsburg or United at Williamsburg Christmas Tournament, TBA.

January

4—at Southern Huntingdon; 8—Moshannon Valley; 11—Williamsburg; 13—at Claysburg-Kimmel; 15—at Mount Union; 18—at Curwensville; 19—Bellwood-Antis; 21—West Branch; 25—at Juniata Valley; 29—Southern Huntingdon.

February

2—at Moshannon Valley; 4—at Williamsburg; 9—Claysburg-Kimmel; 12—Mount Union; 16—at Bellwood-Antis; 18—Harmony.

All games begin at 7:30 p.m. unless noted.



Photo by Jim Butler

December 14, 2009: Glendale 51 at West Branch 56

By Jaelyn Yingling
Sports Editor

ALLPORT — The West Branch girls basketball team led visiting Glendale by 14 points at the half, but had to hold on at the end to defeat the Lady Vikings, 56-51, on Monday evening.

Glendale cut the lead to three points with less than a minute remaining in the fourth quarter, but couldn't overcome the first-half hole.

"I'm proud of them," said Lady Vikings head coach John Matchock. "They didn't quit. We got down big in the first half, and they could've just hung their heads, and they didn't. I told them at halftime to try and cut the lead in half. We got it down to six and then we got it down to a one-possession game. We just dug ourselves too deep of a hole in the first half."

West Branch was led by Mariah McDowell's 24 points and 13 rebounds. Victoria Jarrett added 11 points.

The Lady Warriors outscored Glendale 9-2 to start the game, before Sara Tarr cut the lead to 9-6 with four foul shots.

"I thought Mariah did a great job," West Branch head coach Dan Socash said. "She was a force inside."

"In the first half we looked confident, but in the second half we looked unsure of ourselves. We were afraid to make a mistake. That's what happens when the other team picks up their aggressiveness."

The Lady Warriors extended the lead back out in the second quarter, going on a 9-2 run to put the score at 28-15.

Glendale ran into some trouble with four minutes remaining in the half, when Kelli McGarvey was called for her fourth foul.

McGarvey, who led the Lady Vikings in both points (13) and rebounds (10), had to sit out the remainder of the quarter.

"I didn't realize she picked up four fouls so quick, and I had to take her out there," Matchock said. "In the second half, we gambled a little bit and went to a zone to try and protect her a little bit. She played cautious, but she played good underneath."

The Lady Warriors came out tentative in the second half, but still scored the first four points of the quarter on baskets from Rebecca Kephart and McDowell.

Glendale scored the next nine points to cut the lead to 40-31, before a Jarrett layup on a breakaway ended the run.

The Lady Vikings continued to chip away at West Branch's advantage, and finished off the frame with a 5-0 run.

"It was a tale of two halves," Socash said. "It seems like we ran out of steam. But you have to give Glendale a lot of credit, because they were knocking a lot of shots down, and they seemed to have the energy in the second half. We just couldn't put a basket in, and they put a lot of theirs in. We just seemed like we were a step slow in the second half."

"We didn't rebound well and they kept putting putbacks in. The third quarter just didn't go our way. You have that in basketball sometimes."

The Lady Warriors got a bucket from McDowell to start off the fourth quarter, putting the score at 44-36, but the Lady Vikings answered with two baskets from McGarvey to close the gap to four.

A jumper by McDowell helped put West Branch up by six, but that lead was cut in half when Tarr drained a 3-pointer, making the score 46-43.

A trey by Roni Crowell put the Lady Warriors back up six with less than a minute and a half remaining in the game.

"Roni hurt herself last week," Socash said. "She was in and out of the game because we were still monitoring her. I thought she came in and hit a clutch three. Sometimes it doesn't matter how many points you get."

The two teams traded baskets until another three by Tarr cut the score to 54-51 with less than 40 seconds remaining.

Glendale was forced to foul with time running out, and Jarrett hit two of her four shots to set the final at 56-51.

West Branch (1-0) travels to Brockway on Wednesday evening.

Glendale (0-1) hosts Juniata Valley on Wednesday.

In junior varsity action, the Lady Warriors won, 21-19.

Glendale—51

Biddle 5 0-2 10, Legrand 4 0-0 9, Tarr 2 5-6 11, Spangle 2 0-0 5, McGarvey 6 1-4 13, Wilson 1 0-0 3, Holes 0 0-0 0, Gates 0 0-0 0.
Totals: 20 6-12 51.

West Branch—56

Jarrett 4 3-6 11, McDowell 11 2-5 24, Larson 1 0-0 2, Kephart 3 2-5 8, Kopchik 4 0-0 8, Crowell 1 0-0 3. Totals: 24 7-16 56.

Three-pointers: Tarr 2, Legrand, Spangle, Wilson; Crowell.

Score by Quarters

Glendale	13	9	14	15	51
West Branch	19	17	6	14	56

December 16, 2009: Juniata Valley 64 at Glendale 58

Glendale stung by JV

FLINTON — The Glendale girls basketball team was outscored 25-16 in the fourth quarter of Wednesday's game against Juniata Valley, and dropped a 64-58 decision.

The Lady Vikings (0-2) had three players in double digits, led by Morgan Biddle's 18-point, nine-rebound effort. Brooke Legrand and Sara Tarr finished with 16 and 15, respectively, for Glendale.

The Lady Vikings will look for their first win Friday at Harmony.

Glendale won the junior varsity game, 48-41. Cassie Spangle

led the Lady Vikings with 15 points and Brooke Wilson added 14.

Juniata Valley—64

Morgan 8 2-6 18, Briggs 4 1-3 10, Kyper 2 2-4 6, Myers 2 1-1 5, Grugan 4 0-0 9, Culp 1 0-0 3, Zinobile 4 2-2 10, Moberg 0 0-0 0, Snyder 0 1-2 1, Andrews 1 0-0 2. Totals: 26 9-18 64.

Glendale—58

Biddle 6 6-11 18, Holes 0 0-0 0, Legrand 4 5-7 16, McGarvey 0 0-5 0, Spangle 1 0-0 3, Tarr 4 4-6 15, Wilson 2 0-0 6. Totals: 17 15-29 58.

Three-pointers: Briggs, Grugan, Culp; Legrand 3, Tarr 3, Wilson 2, Spangle.

Score by Quarters

Juniata Valley	9	22	8	25—64
Glendale	15	11	16	16—58

December 18, 2009: Glendale 41 at Harmony 51

By Jaclyn Yingling
Sports Editor

WESTOVER — The Harmony girls basketball team jumped out to a 37-13 lead at halftime and never looked back, toppling visiting Glendale, 51-41, on Friday evening.

The Lady Owls outscored the Lady Vikings, 27-4, in the second quarter, and that proved to be the deciding factor.

"They played a good game," said Harmony head coach Joe Leyo. "That's the best we have played all season as far as I'm concerned. We had good pressure on defense and we got some well-balanced scoring. That's what we need to do. We need to get scoring from everybody, so it takes the pressure off Makenzie (Kruise) and Alyson (Leyo)."

Glendale kept the game close in the first quarter, as the Lady Owls led just 10-9 at the end of the frame. But Harmony got its offense rolling in the second half and forced several turnovers that produced points.

"This is the first game that we turned the ball over a lot," said Lady Vikings head coach John Matchock. "The first two games we controlled the ball better and we played good. If you turn over the ball so many times against a good team like Harmony, they are going to make you pay. And, they did that tonight."

"They got a lot of layups on us. We just made a lot of bad decisions. We can work on it, but sooner or later we have to start using our heads."

Alyson Leyo led Harmony with 21 points. She also had four rebounds and several blocked shots.

Leyo had 10 of her points in the second quarter. Lindsay Neff added eight points, all of which came in the second quarter.

The Lady Owls finished off the first half with a 20-1 run.

Glendale had just one basket in the second quarter, while its other two points came on foul shots.

"I told them at halftime that I don't want to keep giving these speeches where we cut leads in half," Matchock said. "That means that we are down big in the first half. I was really disappointed with how we played in the first half. We aren't a team that should be scoring only four points in the second quarter."

The Lady Vikings fared much better in the third quarter, as Kelli McGarvey opened up the second-half scoring with a bucket.

Glendale outscored the Lady Owls, 13-5, in the third frame. Sara Tarr had six points in the frame, while McGarvey had five.

Leyo had Harmony's only five points in the quarter.

The Lady Owls did get some bench players in in the third quarter, and continued to substitute throughout the fourth.

"We had a good lead there, and I left it go," said Coach Leyo. "I wanted them (the girls off the bench) to feel that pressure, because I'm going to need them to play. If I need them, I know they can step up and do it."

The Lady Vikings continued to chip at the lead in the fourth quarter, as Brooke Legrand scored 10 of her 13 points in the

frame.

Glendale finished off the game with a 9-1 advantage, setting the final at 51-41.

"I keep harping on them about our defense," Matchock said. "We shouldn't be giving up 50 or 60 points a game. We have to get better. We keep having teams driving to the basket on us and getting layups. The people on the bottom have to start taking control, and we aren't doing that."

Harmony's Alaina Westover was the only other Lady Owl in double digits with 11.

"Alaina had a great game," Coach Leyo said. "She played really well."

Legrand led the Lady Vikings with 13 points, while Tarr added 10. McGarvey led all rebounders with seven.

Glendale dropped to 0-3 on the season. The Lady Vikings host Curwensville on Wednesday.

Harmony girls improved to 2-2. The Lady Owls host Union this afternoon.

There was no junior varsity game.

Glendale—41

Tarr 4 2-2 10, Biddle 0 2-4 2, Legrand 4 2-2 13, McGarvey 3 1-2 7, Spangle 1 2-2 4, Grega 0 0-0 0, Holes 0 0-2 0, Gates 0 0-1 0, Matthews 1 0-0 2, Wilson 1 0-0 3, Gingerich 0 0-0 0. Totals: 14 9-15 41.

Harmony—51

Leyo 8 3-3 21, Kruise 3 1-4 7, Novella 1 0-0 2, McDonald 0 0-4 0, Westover 5 1-2 11, Neff 3 1-1 8, Fogle 1 0-0 2, Royer 0 0-0 0, McConnell 0 0-0 0. Totals: 21 6-14 51.

Three-pointers: Legrand 3, Wilson; Leyo 2, Neff.

Score by Quarters

Glendale	9	4	13	15	41
Harmony	10	27	5	9	51

December 23, 2009: Curwensville 33 at Glendale 61

Defense spurs Lady Vikings to win over Tide

By Jon Christoff
Sports Writer

FLINTON — After scoring the first nine points of Wednesday's game with Curwensville and later opening up a 19-8 advantage early in the second quarter, the Glendale girls basketball team hit a wall offensively.

While the Lady Vikings were struggling, the Lady Tide made it 19-15 with 3:49 to go in the half, prompting Glendale coach John Matchock to call a timeout.

"I told them we've just got to start playing defense," said Matchock of the timeout. "I'm a big believer in defense (because) defense creates your offense. We started out real good, but Curwensville didn't quit.

"The past two practices we've been working on our defense, and one of the things we told them, 'if we play good defense, it's going to generate our offense by getting a lot of steals.'"

If it was steals Matchock wanted, then it was steals that he got.

The Lady Vikings forced 11 second-quarter turnovers and finished the night with 14 steals, as their defensive pressure was too much for Curwensville to overcome in a 60-33 triumph.

Despite forcing 30 Lady Tide turnovers, Matchock's squad found itself in foul trouble throughout most of the contest — most notably in the third.

Glendale was whistled nine times in the frame, and Curwensville was able to get into the double bonus early in the fourth quarter.

The Lady Tide made the most of their chances, cashing in on 17 of 24 attempts.

"Right now, we're playing defense with our hands and not our feet," Matchock said. "That's something we have to keep working on because we can't keep sending teams to the foul line all the time. If we keep doing that, we're going to find ourselves on the wrong end of the stick. Fortunately tonight, we were able to not let that happen."

While the Lady Tide was having little trouble in cashing in from the charity stripe, the

same couldn't be said from the floor.

Curwensville made just two buckets in the second half — one coming in each quarter — and finished the night 8-of-54 shooting.

"We did hit some foul shots," said Curwensville coach Rusty McCracken. "It's good to see, if we're not hitting from outside, to take advantage at the foul line.

"We had a lot of hustle and we've just got to keep getting better."

After Matchock's timeout in the second, Glendale used a balanced attack from under the basket as well as the perimeter.

Brooke Legrand knocked down four three-pointers in leading the Lady Vikings with 17, while forward Morgan Biddle added 16 to go along with 11 rebounds.

Biddle helped Glendale extend a 31-19 half-time lead with eight points in the third quarter.

"Their girls inside did a great job," McCracken said. "They have good footwork and they get the ball into them real well. They're good passers.

"We self destructed (by) having a bunch of turnovers, and we had some fouls that didn't help us out."

While Biddle was cashing in on opportunities in the paint, the Lady Tide kept getting to the foul line and attempted more free throws than field goals in the third.

Tess Bloom, Taylor Bumbarger and Courtney Bachelier made seven of 12 attempts in the stanza, but it wasn't enough to climb back into the game.

Bloom led Curwensville with 16 points, 10 of which came from the foul line.

The Lady Tide, who dropped to 0-2 in the Moshannon Valley

League, is off until Jan. 4 when it hosts Harmony.

Glendale (1-2 in the MVL) faces Blacklick Valley on Tuesday at the Williamsburg tournament.

The Lady Vikings also took the jayvee game, 40-14. Cassie Spangle had nine points to lead Glendale, while Sammi Test paced Curwensville with three.

Curwensville—33

Bloom 3 10-13 16, Buzard 1 0-2 2, Bumbarger 0 2-2 2, Wriglesworth 1 0-0 2, Strickland 1 2-3 4, Bachelier 0 2-2 2, McCracken 0 0-0 0, Barrett 0 0-0 0, Johnson 1 0-0 2, Carter 0 0-0 0, Norris 0 1-2 1, Bressler 1 0-0 2. Totals: 8 17-24 33.

Glendale—60

Legrand 5 3-4 17, Biddle 7 2-4 16, Tarr 2 3-4 7, Wilson 2 0-0 6, McGarvey 3 0-5 6, Holes 0 1-2 1, Gates 1 0-0 3, Spangle 0 0-0 0, Grega 0 0-0 0, Gedman 0 0-0 0, Gingerich 0 2-2 2, Matthews 0 2-2 2, Kimberly 0 0-0 0. Totals: 20 13-23 60.

Three-pointers: Legrand 4, Wilson 2, Gates.

Score by Quarters

Curwensville	8	11	9	5—33
Glendale	15	16	16	13—60

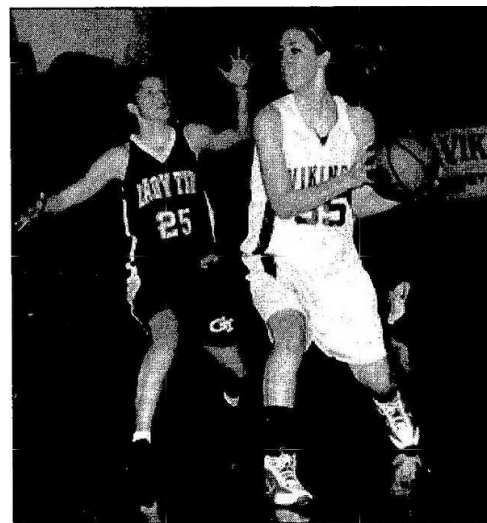


Photo by Jim Butler

Glendale's Morgan Biddle, right, looks to pass the ball during Wednesday's game as Curwensville's Tess Bloom defends. Biddle finished the night with 16 points and 11 rebounds in the Lady Vikings' 60-33 win, while Bloom led the Lady Tide with 16.

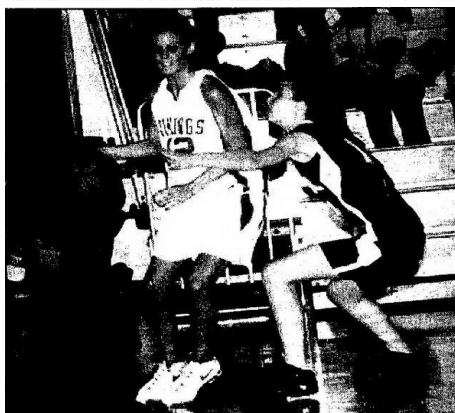


Photo by Jim Butler

The Lady Vikings' Brooke Legrand, left, takes the ball toward the hoop as Curwensville's Paige McCracken defends on the play. Legrand, who hit four three-pointers, led all scorers with 17.

December 29, 2009: Glendale 37 vs Blacklick Valley 40 (Will. Tourn.)

Glendale falls to Blacklick

WILLIAMSBURG — The Glendale girls basketball team fell to Blacklick Valley, 40-37, on Tuesday evening in the opening round of the Williamsburg Holiday Tournament.

The Lady Vikings went just 6-of-12 from the foul line, while Blacklick Valley was 4-of-5.

Glendale was led by Brooke Legrand, who was the only player for either team in double digits, with 13.

The Lady Vikings dropped to 1-4 overall. Glendale will face

United in the consolation game this evening at 6.

Blacklick Valley—40

McDermott 1 0-0 2, Wiegman 2 0-0 4, Kaseky 3 2-2 8, Lesso 4 0-0 8, Smith 4 1-1 9, Verba 3 1-2 7, Kish 1 0-0 2. Totals: 18 4-5 40.

Glendale—37

Legrand 5 1-2 13, Tarr 2 2-2 6, Biddle 3 1-2 8, McGarvey 3 0-1 6, Holes 0 0-2 0, Wilson 0 0-1 0, Spangle 1 2-2 4, Gates 0 0-0 0, Matthews 0 0-0 0. Totals: 14 6-12 37.

Three-pointers: Legrand 2, Biddle.

Score by Quarters

Blacklick Valley	10	7	11	12—40
Glendale	12	8	7	10—37

December 30, 2009: United 41 vs Glendale 57 (Will. Tourn.)

Glendale claims third at tourney

WILLIAMSBURG — The Glendale girls basketball team captured third place at the Williamsburg Holiday Tournament with a 57-41 victory over United on Wednesday evening.



Morgan Biddle led the Lady Vikings with 21 points and 10 rebounds, while Brooke Legrand chipped in with 19 points.

Glendale improved to 2-4 overall. The Lady Vikings return to action on Monday at Southern Huntingdon.

United—41

Culbertson 0 0-2 0, Perry 4 4-4 14, Isenberg 4 1-4 9, Woodle 0 0-0 0, Yaworski 3 0-0 7, Walsh 2 2-2 7, McGaha 0 0-2 0, Painter 0 0-0 0, Brillhart 1 0-0 2, Wallace 1 0-0 2. Totals: 15 7-14 41.

Glendale—57

Legrand 5 6-10 19, Tarr 2 3-3 7, Biddle 7 7-9 21, McGarvey 2 0-0 4, Spangle 2 2-4 6, Wilson 0 0-0 0, Holes 0 0-0 0, Grega 0 0-0 0, Gates 0 0-0 0, Matthews 0 0-0 0, Gedman 0 0-0 0, Gingerich 0 0-0 0. Totals: 18 18-26 57.

Three-pointers: Perry 2, Yaworski, Walsh; Legrand 3.

Score by Quarters

United	8	9	13	11—41
Glendale	18	15	11	13—57

January 4, 2010: Glendale 38 at Southern Huntingdon 83

THREE SPRINGS — The Glendale girls basketball team was defeated by Southern Huntingdon, 83-38, on Monday evening.

Brooke Legrand led the Lady Vikings with 17 points, including four 3-pointers.

The Lady Vikings dropped to 2-5 overall.

Glendale hosts Moshannon Valley on Friday.

In junior varsity action, the Lady Rockets won, 25-15.

Cassie Spangle had eight points for Glendale.

Glendale—38

Legrand 5 1-2 17, Biddle 4 1-1 9, McGarvey 1 0-0 2, Spangle 2 0-0 5, Wilson 1 0-0 3, Holes 1 0-0 2, Kimberly 0 0-0 0, Kruse 0 0-0 0, Gates 0 0-0 0, Matthews 0 0-0 0, Gedman 0 0-0 0, Gingerich 0 0-0 0. Totals: 15 2-3 38.

Southern Huntingdon—83

Shields 6 0-0 13, Hummel 10 4-5 28, Shope 3 2-2 8, Hall 3 0-0 7, Bocher 3 0-0 9, Beatty 2 0-0 5, Flick 2 1-1 5, Bender 4 0-0 8. Totals: 33 7-8 83.

Three-pointers: Legrand 4, Spangle, Wilson; Hummel 4, Bocher 3, Shields, Hall, Beatty.

Score by Quarters

Glendale	11	10	6	11—38
So. Huntingdon	19	19	27	16—83

December 29, 2009: Glendale 37 vs Blacklick Valley 40 (Will. Tourn.)

Glendale girls topple rival Moshannon Valley, 48-30

By Jaclyn Yingling
Sports Editor

FLINTON — After falling behind 10-5 to visiting Moshannon Valley, the Glendale girls basketball team got a stern reprimand from their head coach John Matchock — “box out.”

The warning was loud enough for the entire gym to hear, and apparently the Lady Vikings got the message, too. Glendale outscored the Damsels in the next three quarters to take the 48-30 victory on Friday night.

“We have been preaching that we have to box out,” Matchock said. “If we box out, we play well. But when you are giving teams third and fourth shots, they are going to capitalize eventually. I told them, ‘If we box out, we are going to win.’ And, that’s what happened.”

Moshannon Valley led 8-1 to



Tarr

start the game, before the Lady Vikings knocked down their first basket with 2:47 left in the frame.

The Damsels led 12-5 to begin the second quarter after two foul shots from Taylor

Murarik.

Glendale started to get things in gear after that, going on a 7-0 run to take a 13-12 lead. A basket from Claire Harlow put Mo Valley ahead 14-13, before Sara Tarr netted seven straight points to put the Lady Vikings ahead for good.

Tarr had 12 points and seven rebounds on the night.

“I think the first half I could tell was going to be a night because of some of the calls that were made,” said Damsels head

coach Aaron Mills. “It went both ways, but I could tell we were in that pace that we were going to be in trouble at the end of the game.”

“Claire (Harlow) got into foul trouble, and she has a lot of experience on the floor. But, the bottom line is we are missing foul shots and we are missing easy shots and that’s the game for us.”

The Lady Vikings led 24-16 at the half, despite giving up 10 rebounds in the first two quarters to Harlow.

Glendale was eventually able to stymie Harlow in the second half, allowing just three rebounds before she fouled out with 3:47 remaining in the fourth.

Defense was a big key for the Lady Vikings, who held the Damsels under 10 points in each of the final three quarters.

“Sometimes fast-paced games are to our benefit, and sometimes they aren’t,” Matchock said. “We had some moments where we were turning over the ball. But, for the most part, we like to run the floor.”

“You are going to have turnovers, which I can live with. I thought the girls played smart tonight, and I’m happy for them.”

Glendale closed out the fourth quarter with an 18-9 run, led by Kelli McGarvey and Brooke Legrand’s five points each. McGarvey finished the night with 12 points and five rebounds.

“That says a lot about our team. Legrand was our main scorer so far this season, and Mo Valley did a good job of shutting her down,” said Matchock.

“That says a lot for our girls because they all stepped up. We even had a freshman come off



McGarvey

the bench, Katelyn Matthews, and she did a heck of a job. We played as a team tonight, and we pulled one out.”

Vanessa Rowley was Moshannon

Valley’s leading scorer with nine points. She also had seven rebounds. Maria Charney had eight rebounds and Shawver netted five.

“I thought it was pretty even in the first half, but I don’t think we hit the boards like we should’ve been hitting the boards,” Mills said. “That’s how we have to win games, and I don’t feel we did that tonight.”

Glendale improved 3-5 and 2-2 in the Moshannon Valley League. The Lady Vikings host

Williamsburg on Monday.

Moshannon Valley dropped to 3-6 and 1-2 in the MVL. The Damsels host Mount Union on Monday.

In junior varsity action, Glendale topped Mo Valley, 37-30. Brooke Wilson led the Lady Vikings with 23 points. Brianna Shawver had eight points for the Damsels.

Moshannon Valley—30

Murarik 1 2-4 4, Rowley 3 2-4 9, Harlow 3 0-4 6, Charney 2 2-2 4 6, Hutton 1 0-0 3, Shawver 1 0-0 2, Howe 0 0-0 0. Totals: 11 6-16 30.

Glendale—48

Legrand 2 1-2 5, Tarr 3 5-10 12, Biddle 3 1-2 7, McGarvey 4 3-5 12, Spangle 2 0-0 5, Wilson 1 0-0 2, Gates 0 0-0 0, Matthews 2 1-1 5. Totals: 17 11-20 48.

Three-pointers: Rowley, Hutton; Tarr, McGarvey, Spangle.

Score by Quarters

Moshannon Valley	10	6	5	9—30
Glendale	5	19	6	18—48

January 11, 2010: Williamsburg 66 at Glendale 29

FLINTON — The Glendale girls basketball team couldn't protect its home court Monday night, dropping a 66-29 contest to Williamsburg in Inter-County Conference action.

Morgan Biddle led the Lady Vikings with 12 points while Sara Tarr notched eight. Biddle had 10 rebounds for the home side.

Glendale (3-6, 1-4 ICC) now gets ready to play at Claysburg-Kimmel on Wednesday.

In jayvee action, Williamsburg edged Glendale, 29-25. The Lady Vikings got nine points from Katelyn Matthews.

Williamsburg—66

Hileman 7 2-2 17, Everhart 3 1-2 8, Bookhammer 5 0-0 10, Erneigh 1 0-0 2, Shaw 2 2-2 6, Barroner 2 0-0 4, Lynn 1 1-2 3, Tolksdorf 4 0-0 8, White 1 0-0 2, Edwards 3 0-0 6. Totals: 29 6-8 66.

Glendale—29

Legrand 2 0-0 6, Biddle 6 0-0 12, Tarr 4 0-0 8, McGarvey 1 0-2 2, Spangle 0 0-0 0, Wilson 0 0-0 0, Holes 0 0-0 0, Kimberly 0 0-0 0, Gates 0 1-2 1, Matthews 0 0-2 0, Gingerich 0 0-0 0. Totals: 13 1-6 29.

Three-pointers: Hileman, Everhart; Legrand 2.

Score by Quarters

Williamsburg	14	11	19	22—66
Glendale	10	9	4	6—29

January 13, 2010: Glendale 32 at Claysburg 35

CLAYSBURG — The Glendale girls basketball team fell behind host Claysburg-Kimmel early, and couldn't catch up, dropping a 35-32 decision on Wednesday evening.

Morgan Biddle led the Lady Vikings with 16 points.

Glendale fell to 3-7 overall. The Lady Vikings travel to Mount Union on Friday.

The Lady Bulldogs also won the junior varsity game, 29-25. Kaitlyn Matthews paced Glendale with nine points.

Glendale—32

Legrand 2 0-1 5, Biddle 7 2-4 16, McGarvey 1 2-4 4, Spangle 0 0-0 0, Tarr 3 1-2 7, Wilson 0 0-0 0, Holes 0 0-0 0, Gates 0 0-0 0. Totals: 13 5-11 32.

Claysburg-Kimmel—35

Fleck 3 1-3 8, Swope 2 5-7 9, Claar 2 0-1 4, Williams 2 0-0 4, McDonald 3 1-1 7, Sybert 1 1-6 3, Ka. Harten 0 0-2 0, Ke. Harten 0 0-0 0, Brumbaugh 0 0-0 0. Totals: 13 8-20 35.

Three-pointers: Legrand; Fleck.

Score by Quarters

Glendale	7	2	10	13—32
Claysburg-Kimmel	15	4	9	7—35

January 15, 2010: Glendale 55 at Mt. Union 38

Glendale stifles Mt. Union

MOUNT UNION — The Glendale girls basketball team had three scorers in double digits on Friday evening in a 55-38 victory over Mount Union.

Brooke Legrand led the Lady Vikings with 16 points and 12 rebounds. Morgan Biddle added 14 points and 10 rebounds, while Kelli McGarvey notched 12 points and 10 rebounds.

Glendale improved to 4-7 overall and 2-5 in the Inter-County Conference. The Lady Vikings travel to Curwensville on Monday evening.

Glendale also won the junior varsity game, 52-15. Cassie

Spangle scored 18 for the Lady Vikes, while Hillary Holes notched 14.

Glendale—55

Legrand 6 2-2 16, Biddle 4 6-6 14, Tarr 2 1-2 6, McGarvey 6 0- 12, Wilson 2 0-0 5, Spangle 0 2-2 2, Holes 0 0-0 0, Grega 0 0-0 0, Kimberly 0 0-0 0, Gates 0 0-0 0, Matthews 0 0-0 0, Gingerich 0 0-0 0. Totals: 20 11-14 55.

Mount Union—38

Woods 9 0-0 22, Little 5 0-0 10, Rhone 0 0-0 0, Hale 3 0-0 6, Gearhart 0 0-0 0, Querry 0 0-0 0, Drake 0 0-0 0, Miner 0 0-0 0. Totals: 17 0-0 38.

Three-pointers: Legrand 2, Tarr, Wilson; Woods 4.

Score by Quarters

Glendale	16	15	14	10—55
Mount Union	8	7	14	9—38

Glendale girls topple MVL rival Curwensville, 55-41

By Jon Christoff
Sports Writer

CURWENSVILLE

Glendale girls basketball coach John Matchock told his team before Monday's game that Curwensville was a much-improved team since their first meeting on Dec. 23.

If the Lady Vikings needed any proof, the Lady Tide showed how far they had come by scoring the first nine points of the game at Patton Hall.

Glendale's Brooke Legrand snapped her team's scoring drought with the first of her four 3-pointers in the contest, as the Lady Vikings broke open a 26-all tie midway through the third quarter with a 7-0 run that Curwensville couldn't recover from.

After the Lady Tide's Savannah Strickland tied it at 26, Glendale outscored its Moshannon Valley League rivals 29-15 the rest of the way for a 55-41 win.

"I knew they've been playing much better since we played them the first time," said Matchock. "I told the girls, 'it's not going to be a walk in the park,' because I've been keeping track of their scores in the paper. They've been playing much better. I think our girls didn't show up in the first half, and that's not to take anything away from Curwensville because they've improved greatly since the first time we played them.

"Our girls took them a little too lightly, and I think their 9-0 lead woke them up a little bit. We played better after that. In the second half we played much better."

The Lady Vikings made a concerted effort to work the ball into the post in the second half, as Morgan Biddle and Kelli McGarvey controlled the paint.

The Glendale duo scored 22 of their 28 points in the second half, and each had a hand in the pivotal third-quarter run.

Biddle finished the night with 16 points, while McGarvey turned in her best effort of the season with 12 points, 12

rebounds and six steals.

After the Lady Vikings worked the ball inside to draw in the Lady Tide defense, Legrand — who led Glendale with 18 — capped the stretch with another 3-pointer.

"They have quite the dual package there," Curwensville coach Rusty McCracken said. "I told the girls in the locker room (at halftime), 'they're coming inside every chance they get,' so we had to get our wings to double down to make it more difficult ... and then they found the 3-point range. To have that double threat is tough to compete against.

"We came out a little cold (in the third), couldn't find the basket, and they outscored us by six points in that quarter. We just couldn't break that six-point barrier the rest of the game."

With much of the Lady Vikings' focus on Curwensville leading scorer Tess Bloom, Strickland was able to find some creases in the Glendale defense and helped her team out to the quick start.

Strickland scored six of her team's points in the 9-0 spurt before Legrand started answering back.

The Lady Viking senior finished the half with 13 points, while Strickland had already posted a new career-high with 12 of her 18 points before the intermission.

"Legrand is a good ballhandler and a good shooter," said Matchock, "and Strickland and Bloom ... they have some good shooters on their team. It got to the point where you just had to sit back and watch because everything they threw up was going in. There was nothing you could do ... they were just hot."

Glendale edged ahead by six at the 2:54 mark of the second, but the Lady Tide weren't ready to call it a night just yet.

Katrina Seaburn came off the bench to score a bucket for Curwensville, while Strickland and Katie Wriglesworth also found the bottom of the net to end the half on a 6-2 run.

The Lady Tide had a chance in the waning seconds to tie it at 22, but the layup didn't fall.

Wriglesworth had a solid night on the boards for Curwensville, pulling in 10 to accompany three steals and two blocks.

"We've had games like this before, where I hate to go into the locker room because we had momentum going into the third quarter," McCracken said. "We almost tied it up there at the end of the half, and you hate to take the girls off the floor because who knows what's going to happen coming out of the locker room.

"If the ball bounces the other way — and we missed some easy layups in both halves — it very easily could have been a different game. We had some shots that didn't fall, but we played hard and we played until the end. We've got to look at the positives — that's more points than we scored all year, and we held them under what they scored against us last game. Both offensively and defensively, we showed improvement since the first time we met."

Both teams are back on the hardwood this evening, as Glendale (5-7) hosts Bellwood-Antis and Curwensville (1-8) entertains Kane.

The Lady Vikings won the jayvee game, 47-18, behind 17 points from Katelyn Matthews. The Lady Tide got four points each from Rebecca Johnson, Hannah Bressler and Kaitlynn Sass.

Glendale—55

Legrand 7 0-1 18, Tarr 2 3-4 7, Biddle 7 2-5 16, McGarvey 4 4-6 12, Wilson 0 0-0 0, Spangle 0 0-0 0, Holes 1 0-0 2, Matthews 0 0-1 0. Totals: 21 9-17 55.

Curwensville—41

Bloom 2 3-4 7, Bumbarger 0 0-0 0, Strickland 9 0-0 18, Bachelier 1 2-4 4, Wriglesworth 3 0-0 6, Seaburn 2 2-2 6, Johnson 0 0-0 0, Barrett 0 0-0 0. Totals: 17 7-10 41.

Three-pointers: Legrand 4

Score by Quarters

Glendale	8	14	17	16	—55
Curwensville	12	8	11	10	—41

January 19, 2010: Bellwood 41 at Glendale 29

Glendale girls toppled by Bellwood-Antis, 41-29

By Josh Mlot
Sports Writer

FLINTON — It was a slow trickle for the Glendale girls basketball team Tuesday night, and it turned into a hole that couldn't be plugged.

The Lady Vikings (5-8) were within striking distance of Bellwood-Antis (8-5) the entire first half, but continued turnovers and a lack of finishing on offensive opportunities let the Lady Blue Devils pull away to a 41-29 victory.

"We said at halftime that as bad as we're playing, we're only down seven," Glendale head coach John Matchock said. "We've got to eliminate (turnovers) and make the smart pass."

"We started out the second half all right, but we started to force things and when we force things it leads to turnovers. ...

You're going to have turnovers, but if you can eliminate the ones you make with your head, we can play with anyone."

Glendale finished with 25 turnovers in the game.

"We forced some things, and we've just got to be patient and make the smart pass," Matchock said. "We'd run our plays and the first or second time it wasn't there, and then the girls started to get a little frustrated. I told them in the huddle, 'You've got to wait until the fifth, sixth touch.'"

Morgan Biddle led the home side with 13 points and seven rebounds, and Kelli McGarvey posted a game-high 13 boards as the Lady Vikings won the overall rebounding war, 32-30.

But coming out on top in the battle of the boards required some mid-game adjustments, and Bellwood-Antis capitalized

with some outside shooting. Lady Devil Amanda Grannas scored all of her game-high 14 points in the second half to push forward an ever-expanding gap.

"We tried to change the defense up a little bit so (B-A) wouldn't get so many rebounds," Matchock said, after the visitors were outrebounding Glendale, 19-17, at the half. "You've got to give Bellwood credit, because they took their game to the outside and they made those shots."

B-A center Alycia Hippo had nine points, 10 rebounds and five steals for the Lady Blue Devils, despite a solid interior defensive effort by the Lady Vikings.

"I thought in the first half we played good defense inside. They've got two big girls inside — (Sam) Damiano and Hippo — and they're tough to get around on rebounds."

"I thought Kelli (McGarvey),

Katelyn Matthews and Biddle did a good job of not letting them get the ball inside. They were physical right back with the Bellwood girls. ... That was good to see."

The early going was tight as Biddle took a dish from Brooke Legrand and sank a 3-pointer to tie things at 4 halfway through the first, and Biddle came through again with a smooth post-up move that kept Glendale within two, 8-6.

Down 4 after eight minutes, the Lady Vikings kept battling and getting to the foul line. All eight of their second-quarter points came from the charity stripe, with Legrand hitting four of six freebies in the period.

Glendale finished 12-of-20 at the free-throw line.

But even as Glendale fought through a physical game, the turnovers kept coming, and the

home team was victimized for 13 giveaways in the frame. Bellwood-Antis took advantage of the extra possessions, and Katy Leamer hit two buckets in the half's final 35 seconds, including a final basket in transition off a steal, and the Lady Devils went into the break up 21-14.

"They were in foul trouble so we told the girls to go inside," Matchock said, "but once they got in there they didn't finish. Those are things we've got to keep working on."

Grannas opened the third quarter with a jumper for the visitors, and Bellwood ran out on a 12-2 run that buried the Lady Vikings.

Matthews sparked a 5-0 swing for Glendale with two minutes remaining in the third, but the 12-point deficit held firm through the final quarter.

Glendale slides to 2-6 in Inter-County Conference play with the loss, and looks to bounce back hosting West Branch on Thursday.

The junior varsity contest went to the Lady Vikings, who dropped B-A, 36-17. Matthews spurred on the victory with 10 points.

Bellwood-Antis—41

Lombardo 2 2-3 7, Grannas 6 0-1 14, Damiano 0 0-0 0, Jones 2 2-2 6, Hippo 4 1-2 9, Leamer 2 1-2 5, Krepps 0 0-0 0. Totals: 16-6-10 41.

Glendale—29

Legrand 0 4-6 4, Biddle 5 2-4 13, Tarr 0 3-4 3, McGarvey 2 2-4 6, Spangle 0 1-2 1, Wilson 0 0-0 0, Matthews 1 0-0 2, Holes 0 0-0 0. Totals: 8 12-20 29.

Three-pointers: Grannas 2, Lombardo, Biddle.

Score by Quarters

Bellwood-Antis	10	11	12	8—41
Glendale	6	8	7	8—29

January 21, 2010: West Branch 53 at Glendale 42

Lady Warriors down Glendale

FLINTON — The West Branch girls basketball team defeated host Glendale Thursday night, 53-42, at Donald A. Kitko Gymnasium.

Mariah McDowell and Rebecca Kephart each netted 15 points to pace the Lady Warriors.

"They were getting the ball inside, and we just didn't have anyone to match up with those two," Glendale head coach John Matchock said. "And we didn't do a good boxing out ... we did it in spurts, but not the whole game."

"We got some better looks tonight," West Branch head coach Dan Socash said. "They switched from man to zone, and we were able to score off that. We rebounded well. It was one of the better games we played."

West Branch opened a 20-8 lead after one quarter — and that 12-point cushion was basically the margin of victory.

"We came out flat," Matchock said. "It was the same thing when we played the first time. We got ourselves in a big hole and couldn't get out."

"They came out and pressed us, and we handled it," Socash said. "We got a couple of quick baskets. We executed well breaking the press."

Morgan Biddle led the Lady Vikings with 15 points, while

Brooke Legrand scored 10.

"They were hitting from the outside some in the second quarter, but we switched defenses and shut down their outside shots," said Socash. "The big key tonight was our defense. We played very good, hard defense. I'm proud of how the girls played tonight, especially on defense."

West Branch improved to 8-3 overall, 4-0 in the Moshannon Valley League and 6-3 in the Inter-County Conference. Glendale dipped to 5-9 overall, 3-3 in the MVL and 2-7 in the ICC.

The Lady Warriors won the jayvee game, 32-17. MeKayla Ahlberg and Taylor Trude had eight points for West Branch, while Katelyn Matthews scored eight for the Lady Vikings.

West Branch is back in action tonight at Harmony in a big MVL tilt. Glendale travels to Juniata Valley on Monday.

West Branch—53

Jarrett 2 1-3 6, McDowell 7 1-4 15, Larson 2 2-2 6, Kephart 6 3-4 15, Kopchik 4 1-2 9, Crowell 0 2-2 2, MeK. Ahlberg 0 0-0 0. Totals: 21 10-17 53.

Glendale—42

Legrand 3 2-2 10, Biddle 7 1-3 15, Tarr 3 2-2 9, McGarvey 2 1-1 5, Wilson 0 1-2 1, Holes 1 0-0 2, Matthews 0 0-0 0. Totals: 16 7-10 42

Three-pointers: Jarrett; Legrand 2, Tarr.

Score by Quarters

West Branch	20	13	8	12—53
Glendale	8	18	7	9—42

January 29, 2010: Southern Huntingdon 80 at Glendale 47

Glendale tripped up by SH

FLINTON — The Glendale girls basketball team fell to visiting Southern Huntingdon on Friday evening, 80-47.

Kelli McGarvey paced the Lady Vikings with 16 points, while Morgan Biddle notched 14. Brooke Legrand chipped in with 10 points.

Glendale dropped to 5-10 on the season. The Lady Vikings travel to Juniata Valley this evening.

The junior varsity game was won by Glendale, 31-21. Marissa Grega led the Lady Vikings with

10 points.

Southern Huntingdon—80

Shields 8 1-1 17, Hummel 7 10-11 25, Shope 1 0-0 3, Hall 7 0-0 17, Booher 2 0-0 5, Bender 3 0-0 8, Beatty 2 1-2 5. Totals: 30 12-14 80.

Glendale—47

Legrand 4 1-2 10, Biddle 5 4-9 14, Tarr 2 1-2 5, McGarvey 6 4-4 16, Wilson 0 0-0 0, Holes 0 0-0 0, Spangle 1 0-1 2, Grega 0 0-0 0, Kimberly 0 0-0 0, Gates 0 0-0 0, Matthews 0 0-0 0, Gingerich 0 0-0 0, Gedman 0 0-0 0. Totals: 18 10-18 47.

Three-pointers: Hall 3, Bender 2, Hummel, Shope, Booher, Legrand.

Score by Quarters

So. Huntingdon	18	26	23	13—80
Glendale	16	10	14	17—47

January 30, 2010: Glendale 58 at Juniata Valley 45

Glendale topples Juniata Valley

ALEXANDRIA — The Glendale girls basketball team defeated Juniata Valley, 58-45, on Saturday evening in an Inter-County Conference matchup.

Morgan Biddle paced the Lady Vikings with 19 points and 14 rebounds. Katelyn Matthews added 13 points, while Kelli McGarvey chipped in with 14 rebounds and eight points.

"We finally played the way I knew we could play," said Glendale head coach John Matchock. "We made smart decisions and boxed out really well. I'm very proud of the girls. We just need to continue to play this well."

The Lady Vikings improved to 6-10 overall and 3-8 in the ICC.

Glendale travels to Moshannon Valley on Tuesday.

Juniata Valley won the junior varsity game, 37-32, in double overtime. Cassie Spangle had 12 points for Glendale.

Glendale—58

Legrand 3 0-0 8, Biddle 8 3-5 19, Tar 1 5-6 8, McGarvey 3 2-4 8, Wilson 1 0-2 2, Holes 0 0-0 0, Spangle 0 0-0 0, Gates 0 0-0 0, Matthews 3 7-9 13. Totals: 19 17-26 58.

Juniata Valley—45

Morgan 5 0-1 14, Briggs 2 4-8 8, Kyper 1 1-2 4, Myers 2 1-2 5, Grugan 1 0-0 2, Culp 1 0-2 2, Zinobile 1 3-6 5, Moberg 0 0-0 0, Snyder 0 0-0 0, Anders 2 0-0 5. Totals: 15 9-23 45.

Three-pointers: Legrand 2, Tarr; Morgan 4, Kyper, Anders.

Score by Quarters

Glendale	7	19	17	15—58
Juniata Valley	11	4	17	13—45

Wilson's 3-pointer sends Lady Vikings over Damsels in OT

By Josh Mlot
Sports Writer

AMESVILLE — Different place, different game.

After the Glendale girls basketball team had little trouble dispatching Mo Valley earlier this season, it was a distinctly different story at Lamont Close Gymnasium Tuesday night.

The two sides traded blows for 32 minutes — and then some more — as a big 3-pointer from Brooke Wilson with less than a minute left in overtime lifted the

Lady Vikings to a 58-55 victory.

"The girls stepped up," Glendale head coach John Matchock said. "I knew we beat them fairly handily up at our place, but I knew Mo Valley was playing better. They just came off a big win against Harmony, and I told the girls in the locker room that we're going to be in for a fight.

"We hung in there and never really got down by too much. Just kept chipping away and chipping away, and eventually we went up."

It was the second overtime defeat for the Damsels (4-14) this year, as well as the fifth loss by five points or less during a season in which Mo Valley has come up just short numerous times.

"It seems like whether we've got the lead or come from behind, there are a couple of key moments toward the end of the game where we just can't catch a break," Mo Valley head coach Aaron Mills said.

"I told them that I'm not disappointed that we lost. ... What I'm really proud of is that these teams that have blown us out, we're coming back in that second game and we're really putting it to them and either winning or staying close. We're getting chances to win at the end of the game, and that's a position we want to be in. Unfortunately, we're just not closing it out."

It wasn't for lack of effort, especially from upperclassman Vanessa Rowley, who on Senior Night put on a show in what Mills called "the best game of her career."

The senior guard scored 32 points, including 10 during crunch time in the fourth quarter, for a career high.

"How fitting — Vanessa, on Senior Night, had her best game as a Damsel, in my opinion," Mills said. "She hit some shots where I turned to the side and was just in awe.

"That girl has heart, and she wants to win. She put it to them tonight, and unfortunately we couldn't get enough balanced scoring to help that cause."

Mo Valley got some help from sophomore Brianna Shawver, who provided a strong inside presence with 10 points and 10 rebounds.

"I thought Shawver did a nice job," Mills said. "Claire Harlow hurt her ankle and was on the bench a little bit. Shawver stepped in and did a nice job on the boards and putting up some points."

Sara Tarr led the Lady Vikings with a season-high 17 points, including a key bucket from outside the arc with 5:35 left in regulation.

The 3 from the top of the circle pulled Glendale (7-10) within four points and acted as a huge momentum-shifter, sending the visitors on an 11-0 run that put them on top for the first time since midway through the first.

That swing featured two more 3s — one from Brooke Legrand and another, run-capping bomb from Tarr — after hitting only one shot from outside the arc through the first three periods.

"Sara got us a big one ... and once one goes we have momentum," Matchock said. "We got a couple steals, got a couple layups. Brooke Wilson hit a big shot that put us in the lead (in overtime). It was a momentum thing."

Legrand notched 12 points, six rebounds and five assists in a balanced attack for the Lady Vikings. Morgan Biddle added a double-double (12 points, 10 boards) as three Glendale players notched double-digit points.

"Before the season started that's one thing we all agreed upon — we have to play as a team," Matchock said. "If some-

one's open, they'll do their damndest to get them the ball, and it pays off in close games like that."

After Tarr nailed her second trey of the fourth quarter, Moshannon Valley found a response in Rowley.

Smothered by two defenders on a drive from the left, Rowley pulled up and hit a baseline jumper with hands in her face to pull within two. Just over a minute later she took a cross-court pass from Taylor Murarik and drained a 3 to draw within one, 49-48.

"That one shot where she hit it from the baseline with two people in her face," Mills said. "I don't know how she did it, but she did."

With 26 seconds remaining, Rowley made a final splash, tickling the twine from long range again to knot things at 51 and send the contest to overtime.

The two tiring teams struggled to manufacture much offense early in the extra frame, but Rowley drove to the hoop for a 55-53 advantage with 1:06 to go. The Lady Vikings got their answer 14 seconds later when Wilson's 3 put them up 56-55, and the visitors went 2-of-4 from the line the rest of the way.

"As long as the girls realize there are little things they can do to stay in it, we'll get our wins," Mills said. "I think we've shown we're the best four-win team out there. We've gotten just some bad breaks."

The Damsels took a quick lead to open the game, with Chelsea Neff needing only six seconds to drain a 3-pointer, but Glendale swung back with a 7-0 run. The home side responded and traded blows until a Harlow layup with 2:30 left in the first pushed Mo Valley on top, where it would stay for the next two quarters.

Rowley closed out the first with the final five points of a 7-0 swing, and Shawver went 4-for-4 from the line in the second stanza to help the Damsels maintain a five-point advantage at half-time.

Glendale chipped into the deficit in the third, with a Cassie Spangle jumper making the difference 3. That gap held through the frame, as Biddle scored six of her 12 points after dealing with some foul trouble early in

the first half.

Tarr's game-changing 3 two-and-a-half minutes into the fourth set up a Legrand layup that dropped despite contact. After Legrand hit another 3-pointer to give the Lady Vikings a 42-41 lead with 3:49 to go, a scramble on a loose ball led to a controversial timeout — with Glendale being awarded possession in the scrum. Out of the break, Tarr hit her second shot from outside the arc.

"I think a key moment was when Glendale was awarded a timeout," Mills said. "I don't believe anybody had possession of the ball at that moment. I tried to do the same thing (minutes later), and they got the jump ball and they got possession. ... That took a possession away from us."

Seniors from both sides were honored in a pre-game Senior Night ceremony, with two graduating players from each side — Legrand and Avril Gedman for Glendale, and Rowley and Murarik for Moshannon Valley.

"For these seniors — Vanessa and Taylor — I feel bad they got the loss, but they both played extremely hard," Mills said. "Taylor is our defensive specialist, and she did a nice job on Legrand. Vanessa had the best game of her career."

The loss drops Mo Valley to 2-4 in Moshannon Valley League play and 1-12 in the Inter-County Conference. The Damsels return to the court Thursday at Mount Union.

Glendale is now 4-3 in MVL action and 4-8 against ICC opponents. The Lady Vikings travel to Williamsburg on Thursday.

Glendale won the junior varsity game, 45-16. Matthews had 10 points for the Lady Vikings. Katelin Thompson scored eight for the Damsels.

Mo Valley—55

Rowley 13 3-3 32, Murarik 1 0-0 2, Harlow 2 0-2 4, Charney 1 2-2 4, Neff 1 0-3 3, Shawver 3 4-4 10. Totals: 21 9-14 55.

Three-pointers: Legrand 2, Tarr 2, Wilson; Rowley 3, Neff.

Glendale—58

Legrand 5 0-2 12, Biddle 4 4-4 12, Tarr 5 5-6 17, Wilson 2 2-4 7, McGarvey 3 0-2 6, Gates 0 0-0 0, Hoies 0 0-0 0, Matthews 0 0-0 0, Spangle 1 2-2 4. Totals: 20 13-20 58.

Score by Quarters

Glendale	10	12	12	17	7-58
Mo Valley	16	11	10	14	4-55

February 4, 2010: Glendale 38 at Williamsburg 71

Williamsburg downs Glendale

WILLIAMSBURG — The Glendale girls basketball team had a two-game win streak ended Thursday night, traveling to Williamsburg and getting tripped up by a score of 71-38.

Sara Tarr paced the Lady Vikings with 11 points while Kelli McGarvey picked up eight points while going 6-for-9 from the foul line.

Glendale (7-11 overall, 3-10 Inter-County Conference) is back on the court hosting Claysburg-Kimmel on Tuesday.

In jayvee action, Williamsburg topped Glendale, 45-35, as the Lady Vikings got 13

points from Katelyn Matthews.

Glendale—38

Legrand 1 0-0 2, Biddle 2 0-0 4, Tarr 3 5-8 9, McGarvey 1 6-9 8, Wilson 1 0-0 3, Spangle 0 0-0 0, Matthews 2 0-0 4, Holes 1 0-0 2, Gingerich 1 0-0 2, Kruse 1 0-0 2, Kimberly 0 0-0 0, Grega 0 0-0 0, Gedman 0 0-0 0, Barnhart 0 0-0 0. Totals: 13 11-17 38.

Williamsburg—71

Hileman 9 3-3 22, Everhart 3 5-7 11, Bookhammer 1 0-0 2, Erneigh 3 0-0 6, Shaw 5 0-0 12, Barroner 3 0-0 8, Lynn 0 0-0 0, Tolksdorf 3 0-0 6, White 0 0-0 0, Edwards 1 2-2 4. Totals: 28 10-12 71.

Three-pointers: Wilson; Shaw 2, Barroner 2, Hileman.

Score by Quarters

Glendale	8	3	15	12—38
Williamsburg	17	22	22	10—71

February 4, 2010: Glendale 38 at Williamsburg 71

Legrand and McGarvey lead Glendale girls over Mount Union

By Jon Christoff
Sports Writer

FLINTON — Like many teams around the area, the Glendale girls basketball team has been hindered by the inclement weather over the course of the last week.

Like the temperatures outside, the Lady Vikings' shooting was frigid during a 0-for-21 spell in the third quarter of Friday's game against Mount Union.

Luckily for Glendale, senior Brooke Legrand made back-to-back 3-pointers to ignite an 8-for-11 stretch that went into the final quarter in a 56-28 triumph.

The Lady Vikings held a comfortable 30-9 lead at halftime, but couldn't get a shot to fall from the floor before Legrand knocked down one of her three 3-pointers in the contest with 1:10 showing on the third-quarter clock.

"We came out a little slow," said Lady Viking head coach John Matchock of his team's third quarter. "We haven't done much since Monday with the snow, but it's that way with every team. We missed some easy shots, but once we started hitting some shots it was like a snowball effect.

"We made a couple of shots, and that got the team going. Legrand will shoot from anywhere, and when she makes the threes, that gets the team pumped up and it gives her a little more confidence."

The onset of the game had the same feel as the third quarter, as Glendale began by missing its first seven shots and trailed 2-0 with 5:19 left on the clock.

That's when Lady Viking for-

ward Morgan Biddle made her presence known.

Biddle scored six of Glendale's 11 first-quarter points, and dominated the first 11 minutes of play before picking up her third personal foul with 4:59 left in the first half.

During her time on the court, Biddle led all scorers with 10 points, pulled down four rebounds, recorded two steals and blocked three shots.

Biddle was relatively quiet after that point, as she missed her final five shots in the game and pulled in just two more rebounds.

"She's a pretty big presence inside," Matchock said of Biddle. "She tends to pick up some fouls going for blocked shots, but ... she's an aggressive player. You hope she can control that a little bit."

As Biddle picked up her third foul, Mount Union pulled to within eight on a pair of Michelle Little foul shots.

With Biddle coming out of the lineup after Little's first make, the rest of the Lady Vikings picked up the slack.

Glendale scored 13 straight points before the Lady Trojans got back on the scoreboard with 38 seconds left in the half and finished the quarter on a 13-2 run.

Sara Tarr netted five straight points for the Lady Vikings, who also got four points from Katelyn Matthews during the stretch.

"That's one good thing about this team," said Matchock. "When Morgan went out, we had some other girls come off the bench and get some minutes, like Katelyn Matthews. She's just a freshman, and I thought she

played pretty good. We played as a team."

A big reason for the Lady Vikings' success came by dominating the battle of the boards.

Glendale held a 16-5 advantage at halftime, and outrebounded Mount Union 43-18. The Lady Vikings limited the Lady Trojans to 3-of-23 shooting in the first half, including just two attempts on putbacks.

"One thing I mentioned before the game, and even at halftime, was limiting them to one shot, and that's what we were doing," Matchock said.

"Luckily, the one shot they were taking wasn't going in during the first half. We did a good job of limiting them to one shot, boxing out and running the floor."

Legrand and Kelli McGarvey

each finished with 13 points for Glendale. McGarvey led all players with 11 rebounds.

The Lady Vikings (8-11) are back in action this afternoon against Claysburg-Kimmel. Tip-off is set for 2:30 p.m.

Mount Union—28

Querry 2 0-0 5, Rhone 1 0-0 2, Hale 0 0-0 0, Miner 1 0-0 2, Woods 3 0-0 8, Little 1 2-2 4, Drake 2 0-0 5, Spriggs 0 2-2 2, E. Barnhart 0 0-0 0, Estep 0 0-0 0, Grant 0 0-0 0, Kerr 0 0-0 0. Totals: 10 4-4 28.

Glendale—56

Legrand 4 2-2 13, Tarr 3 0-0 7, Biddle 3 4-4 10, McGarvey 5 3-4 13, Wilson 0 2-2 2, Matthews 2 1-2 5, Spangle 1 0-0 2, Holes 0 0-0 0, Kimberly 0 0-0 0, Grega 1 0-2 2, Kruse 1 0-2 2, S. Barnhart 0 0-0 0. Totals: 20 12-18 56.

Three-pointers: Woods 2, Querry, Drake; Legrand 3, Tarr.

Score by Quarters

Mount Union	2	7	11	8—28
Glendale	11	19	12	14—56

February 13, 2010: Claysburg 35 at Glendale 37

Glendale girls topple Mount Union, 37-35

FLINTON — The Glendale girls basketball team toppled visiting Claysburg-Kimmel, 37-35, on Saturday afternoon.

Kelli McGarvey led the Lady Vikings with 12 points. Morgan Biddle and Brooke Wilson each had eight points.

"We have been playing really well lately," said Glendale head coach John Matchock.

"This is the way I thought we could play all year. We lost some close games early in the season, but the girls haven't quit. They continue to work hard and we are finally getting the results I had hoped for. I'm very proud of them."

Glendale improved to 9-11 overall. The Lady Vikings travel

to Bellwood-Antis on Tuesday.

The Lady Vikings also won the junior varsity game, 44-43. Hillary Holes had 16 points for Glendale.

Claysburg-Kimmel—35

Swope 4 1-2 10, Claar 1 0-0 3, Ka. Harten 0 0-0 0, Williams 5 0-2 10, McDonald 2 0-0 4, Sybert 2 2-2 6, Brumbaugh 1 0-0 2, Snyder 0 0-0 0. Totals: 15 3-6 35.

Glendale—37

Legrand 1 0-1 3, Biddle 3 2-4 6, Tarr 3 0-1 6, Wilson 3 0-0 8, McGarvey 5 2-6 12, Holes 0 0-0 0, Spangle 0 0-0 0, Matthews 0 0-0 0. Totals: 15 4-12 37.

Three-pointers: Swope, Claar; Wilson 2, Legrand.

Score by Quarters

Claysburg-Kimmel	8	4	14	9—35
Glendale	14	7	10	6—37

February 16, 2010: Glendale 46 at Bellwood 53

Bellwood downs Glendale

BELLWOOD — A slow start for the Glendale girls basketball team left a hole too big to dig out of, as the Lady Vikings fell to Bellwood-Antis, 53-46, on Tuesday.

Morgan Biddle led Glendale with 14 points, while Sara Tarr and Kelli McGarvey added 10 apiece.

The Lady Vikings (9-12 overall, 5-11 Inter-County Conference) host Harmony Thursday.

In junior varsity action, Glendale got the better of Bellwood-Antis, 34-28. Katelyn Matthews led the way for the Lady Vikings with 13 points.

Glendale—46

Legrand 1 4-6 6, Biddle 6 0-0 14, Tarr 3 2-2 10, Wilson 1 0-0 3, McGarvey 5 0-2 10, Gedman 0 0-0 0, Spangle 1 0-0 3, Matthews 0 0-0 0, Holes 0 0-0 0, Gingerich 0 0-0 0. Totals 17 6-10 46.

Bellwood-Antis—53

Krepps 0 1-2 1, Lombardo 2 2-4 7, Grannas 3 1-2 8, Leamer 1 6-7 8, Damiano 3 0-0 6, Jones 3 3-4 9, Hippo 5 4-5 14. Totals: 17 17-22 53.

Three-pointers: Biddle 2, Tarr 2, Wilson, Spangle, Lombardo, Grannas.

Score by Quarters

Glendale	10	12	12	12—46
Bellwood-Antis	22	6	8	17—53

Novella's last-second shot lifts Harmony over Glendale

By Jaclyn Yingling
Sports Editor

FLINTON — Down by six points with four of its five starters in foul trouble, things weren't looking too good for the Harmony girls basketball team on Thursday evening against rival Glendale.

But the Lady Owls kicked things in gear, outscoring the Lady Vikings 12-4 in the final three minutes to take the 52-50 victory.

Harmony's Kaitlin Novella sealed the deal with 3.6 seconds left, nailing a jumper on a pass under the hoop from Alyson Leyo.

Novella finished with just two points, but made them count.

"I've been telling Katie, 'Keep shooting, keep shooting and the right shot will go in.'" said Lady Owls head coach Joe Leyo.

"It did. It was a great job by Aly not to force things and try and do it herself. She saw her teammate open and got her the ball, and we won the game."

Harmony led almost the entire first half, going up 7-0 at

girls scoring in double figures. It has to be a team effort."

After Harmony tied the game at 23-23 to start the third quarter, Glendale jumped out to a 28-23 advantage.

The Lady Owls retook the lead and kept it the rest of the frame, except for twice when the game was tied.

The teams headed into the fourth quarter tied at 34-34.

Glendale took a three-point lead after Legrand nailed a trey to start the fourth. Harmony then scored twice to go back up 38-37.

The Lady Vikings then went on a run retaking the lead, 44-38. The teams traded baskets back and forth, as Glendale led 46-40 with just over three minutes remaining.

That's when the Lady Owls, or Lady Owl took over. Leyo forced two turnovers in the Glendale end, then drove the length of the floor for layups, to cut the score to 46-44.

The Lady Vikings' Katelyn Matthews hit two foul shots to put the score at 48-44.

Baskets from Lindsey Neff, Leyo and Makenzie Kruse gave Harmony the 50-48 advantage with less than a minute to play.

A basket from Kelli McGarvey tied the score at 50-50, but the Lady Owls went right back down the court with a chance at a last shot to win it.

The Lady Owls got the ball into Leyo's hands, but she saw a wide-open Novella under the net and passed her the ball. Novella let the ball fly and it went in with seconds to spare.

"We were just kind of sluggish," Coach Leyo said. "We weren't getting after it, and that's what hurt us."

"We needed to play the ball. We were standing there letting them (Glendale) catch it. You have to be active on the passes on the inside. We started to do that with three minutes left, and they got it done."

Glendale tried to get off a last-season shot, but Biddle didn't get a chance to release the

ball, setting the final at 52-50.

"The last exchange, Ashley (McDonald) played extremely good defense on the far side, or Morgan would've had a chance to shoot," said Coach Leyo. "She didn't get there, because Ashley was there to stop her."

"Harmony is a good team," Matchock said. "We've lost a lot of close games this year. We just couldn't get over the hump. We had that big lead and we started forcing the ball. We were making some bad passes. It's been that way all season."

"They (Harmony) always play us tough. We wanted to send Legrand (a four-year starter) out on a winning note, and I'm sorry we couldn't do that. But both teams played a hard game."

Leyo led all scorers with 18 points and 13 rebounds. Kruse added 15 points, while Neff notched 13 points.

Legrand was Glendale's leading scorer with 14 points and nine rebounds. McGarvey tallied 12 points and eight rebounds.

Glendale finished the season at 9-13 overall and 4-4 in the MVL.

Harmony improved to 10-9 overall and 6-2 in the Moshannon Valley League. The Lady Owls host Clearfield this evening.

NOTES: Glendale honored its two seniors, Legrand and Avril Gedman, before the game. Gedman's mother accepted her gifts because her daughter was representing the school at district band in State College. ... Lady Viking freshman Caitlin Kimberly sang the National Anthem before the game.



Novella

the start of the game before taking a 13-10 lead after the first quarter.

Glendale fell behind by six points to start the second half, but started to chip away at the Lady Owls' lead late in the second quarter.

The Lady Vikings eventually took a 19-18 lead after a jumper by Brooke Legrand. Harmony quickly answered with a basket from Leyo to go back up 20-19.

But Glendale closed out the half with buckets from Hillary Holes and Morgan Biddle to lead 23-22 at the half.

Holes and Biddle were just two of seven players to find the hoop for the Lady Vikings.

"The second half of the season, I thought we had some real balanced scoring," Lady Vikings head coach John Matchock said. "It hasn't been one or two people. We've had like three or four

Harmony—52

Leyo 9 0-0 18, Kruse 5 4-8 15, Neff 6 0-2 13, Westover 0 2-2 2, McDonald 1 0-0 2, Novella 1 0-0 2, Maseto 0 0-0 0. Totals: 22 6-12 52.

Glendale—50

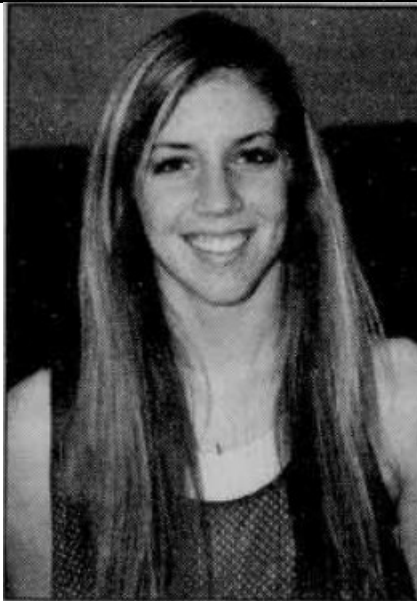
Legrand 5 2-3 14, Biddle 2 0-0 4, McGarvey 3 6-10 12, Tarr 2 3-4 8, Wilson 0 0-0 0, Spangle 1 0-0 2, Holes 1 4-4 6, Matthews 1 2-2 4. Totals: 15 17-23 50.

Three-pointers: Kruse, Neff, Legrand 2, Tarr.

Score by Quarters

Harmony	13	9	12	18	—52
Glendale	10	13	11	16	—50

2009-10 Progressland Girls Basketball All-Stars



**Morgan Biddle
Glendale
First Team**

Morgan Biddle, Jr., Glendale: Biddle was a second-team selection as a sophomore, but the Lady Viking junior elevated her game enough to make the leap to this year's first team.

A terror in the post, Biddle's inside presence gave Glendale one of the area's best inside-outside combination with sharpshooter Brooke Legrand. If teams doubled down on Biddle, she was able to kick the ball out to Legrand and vice versa.

Biddle led the Lady Vikings by scoring 11.9 points per contest, and added some stout defensive numbers to push her into the area's elite.

The Glendale forward pulled down 187 rebounds, blocked 44 shots and dished out 37 assists. Biddle also ended the season

with 40 steals.

2009-10 Girls Basketball Honor Roll

First Team

Morgan Biddle.....	Glendale.....	Junior
Taylor Harpster.....	Phillipsburg-Osceola.....	Senior
Rebecca Kephart.....	West Branch.....	Senior
Madison Sopic.....	Clearfield.....	Senior
Gwenn Porter.....	Clearfield.....	Senior

Second Team

Tess Bloom.....	Curwensville.....	Senior
Cassie Brocius.....	Purchase Line.....	Sophomore
Amber Byerly.....	Clearfield.....	Senior
Makenzie Kruse.....	Harmony.....	Junior
Mariah McDowell.....	West Branch.....	Senior
Vanessa Rowley.....	Moshannon Valley.....	Senior
Maureen Witters.....	Phillipsburg-Osceola.....	Junior

Honorable Mention

Claire Harlow.....	Moshannon Valley.....	Junior
Bethany Kopchik.....	West Branch.....	Junior
Brooke Legrand.....	Glendale.....	Senior
Patience McCullough.....	Purchase Line.....	Senior
Kelli McGarvey.....	Glendale.....	Sophomore
Lindsay Neff.....	Harmony.....	Senior
Lauren Simcox.....	Phillipsburg-Osceola.....	Sophomore

Player of the Year

Alyson Leyo, Harmony

Coach of the Year

Joey Castagnolo, Clearfield

Moshannon Valley League

Team	W-L
West Branch	7-1
Harmony	6-2
Glendale	4-4
Moshannon Valley	3-5
Curwensville	0-8

INDIVIDUAL STATISTICS

Scoring

(15 GP minimum)

Player	FG	FTM	3s	Pts.	Avg.
Leyo, H	154	65	29	402	20.1
Bloom, CU	104	119	11	338	16.1
Brocius, PL	112	38	34	296	15.6
T. Harpster, PO	136	44	34	350	15.2
Kephart, WB	124	92	5	345	15.0
McDowell, WB	121	44	0	286	12.4
Kruise, H	79	75	12	245	12.3
Biddle, G	104	50	4	262	11.9
Rowley, MV	91	53	22	257	11.7
McCullough, PL	69	54	0	192	11.3
Sopic, CL	105	45	4	259	11.3
Porter, CL	96	44	15	251	10.9
Legrand, G	79	36	42	236	10.7

Free Throw Percentage

(40 FTA minimum)

Player	FTM	FTA	FT%
Bloom, CU	119	157	75.8
Tarr, G	55	76	72.3
Sopic, CL	45	63	71.4
Witters, PO	28	42	66.7
Kephart, WB	92	144	63.9
Legrand, G	36	57	63.2
Simcox, PO	55	87	63.2
T. Harpster, PO	44	70	62.9
Kruise, H	75	122	61.5
Wilson, PO	49	80	61.3
Kopchik, WB	31	51	60.8
Biddle, G	50	83	60.2
Byerly, CL	65	108	60.2

Free Throw Percentage

Team	FTM	FTA	FT%
Curwensville	191	310	61.6
P-O	248	411	60.3
West Branch	245	441	59.6
Glendale	215	362	59.4
Clearfield	203	345	58.8
Harmony	187	338	55.3
Purchase Line	190	369	51.5
Mo Valley	160	377	42.4

3-Pointers Per Game

Player	GP	3s	Avg.
Ja. Ryan, CL	23	48	2.1
Legrand, G	22	42	1.9
Brocius, PL	19	34	1.8
Witters, PO	23	40	1.7
T. Harpster, PO	23	34	1.5
Leyo, H	20	29	1.5
Simcox, PO	23	24	1.1
Rowley, MV	22	22	1.0

TEAM STATISTICS

Scoring Offense

Team	GP	Pts.	Avg.
Clearfield	23	1175	51.1
P-O	23	1148	49.9
Harmony	20	991	49.6
Glendale	22	1022	46.5
West Branch	23	1069	46.5
Purchase Line	19	866	45.6
Mo Valley	22	804	36.5
Curwensville	21	704	33.5

Scoring Defense

Team	GP	Pts.	Avg.
Clearfield	23	987	42.9
West Branch	23	986	42.9
Mo Valley	22	975	44.3
P-O	23	1064	46.3
Harmony	20	963	48.2
Glendale	22	1091	49.6
Curwensville	21	1070	50.9

3-Pointers Per Game

Team	GP	3s	Avg.
P-O	23	106	4.6
Clearfield	23	84	3.7
Glendale	22	81	3.7
Harmony	20	58	2.9
Purchase Line	19	36	1.9
Mo Valley	22	32	1.5
Curwensville	21	19	0.9
West Branch	23	22	0.9

Players	Points	Three's
Morgan Biddle	264	4
Brooke Legrand	240	44
Kelli McGarvey	177	1
Sara Tarr	175	14
Brooke Wilson	58	13
Cassie Spangle	46	5
Katelyn Matthews	37	0
Hillary Holes	13	0
Meagan Gates	4	1
Annette Gingerich	4	0
Lynda Kruse	4	0
Marissa Grega	2	0
Totals	1024	82