

2007-2008 Season



First Row: Brooke Wilson, Whitney Strong, Brianna Dick, and Michele Gates

Second Row: Samantha Noel, Megan Gates, Catie Dick, Sara Tarr, and Katie Treese

Third Row: Coach Matchock, Brooke Legrand, Tiffany Twigg, Morgan Biddle, and Coach Dick

Glendale looks to improve

Roster
Seniors
 *Catie Dick, *Katee Treese, *Tiffany Twigg.
Juniors
 *Brianna Dick, *Michele Gates, *Samantha Noel, *Whitney Strong.
Sophomores
 *Brooke Legrand.
Freshman
 Morgan Biddle, Megan Gates, Sara Tarr, Brooke Wilson.
 *Denotes returning letterwinners

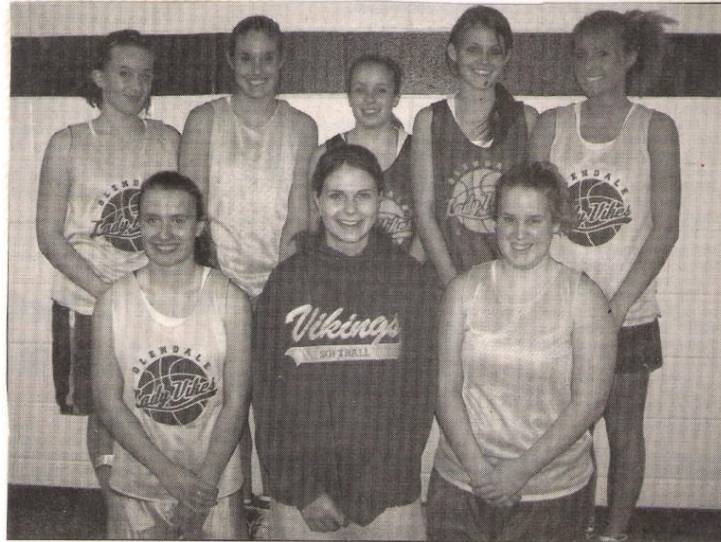


Photo by Jaclyn Yingling
Lady Vikings letterwinners — Glendale returns eight letterwinners to its 2007-08 squad. In front, from left, are Katie Treese, Tiffany Twigg and Catie Dick. In back are Brianna Dick, Samantha Noel, Michele Gates, Brooke Legrand and Whitney Strong.

Schedule November

30—vs. West Branch at West Branch Tip-Off Tournament, 7:30 p.m.

December

1—vs. Austin or Grier at West Branch Tip-Off Tournament, TBA; 4—Bellwood-Antis; 7—Harmony; 10—at West Branch; 12—Southern Huntingdon; 14—at Claysburg-Kimmel; 18—at Moshannon Valley; 20—at Juniata Valley; 28-29—at Williamsburg Christmas Tournament.

January

2—Curwensville; 3—at Williamsburg; 7—at Mount Union; 9—at Bellwood-Antis; 15—West Branch; 18—at Southern Huntingdon; 21—Claysburg-Kimmel; 22—at Curwensville; 25—Moshannon Valley; 29—Juniata Valley.

February

1—Williamsburg; 5—Mount Union; 7—at Harmony.

All games begin at 7:30 unless noted.

By Jaclyn Yingling Sports Editor

FLINTON — After winning just one game last season, the Glendale girls basketball team hopes to improve on that mark dramatically this year.

"We are a young team," said Lady Vikings head coach John Matchock.

"The girls have practiced all summer, and have worked hard. We will just have to take it game-by-game."

Matchock welcomes back eight letterwinners this year, including leading scorer Tiffany Twigg, who averaged 5.9 points per game last year.

Also back are seniors Catie Dick (3.0 ppg) and Katie Treese.

The Lady Vikings have a solid core of juniors with Brianna Dick, Michele Gates, Samantha Noel and Whitney Strong.

Noel averaged 5.3 points per game as a sophomore.

Brooke Legrand, the lone freshman from last year's team, is also back.

Glendale will welcome four freshman to the squad. Morgan Biddle, Megan Gates, Sara Tarr and Brooke Wilson should all contribute this year according to Matchock.

"We have some quickness this year," he said. "We have two freshman girls (Biddle and Tarr) who will bring us some height. They've played well all summer and I think they can step in and do good. I think we are going to do well in rebounding."

While the Lady Vikings struggled at time last year with conditioning, the team will have some quickness this season.

"We are going to go back to our old style of play with a man-to-man defense," Matchock said. "We have a lot of speed with the younger girls, so we plan to use it to our benefit."

"Last year, we weren't a man-to-man team, so we played a lot of zone. I'm not a big fan of the zone, so we are going to go back to man-to-man. I think when you play that, the crowd gets in to it and the players get it to it. It makes the game a lot more entertaining, so we are going to go with that this year."

The biggest obstacle for the girls will be running the plays efficiently Matchock said.

"We need to work on our plays," he stated. "That was something from last year too. We are going to be a better shooting team this year."

"Another thing I really wanted to stress this year was foul shooting. Last season we were down at the bottom of the list as far as foul shooting, and that's something we want to change."

Matchock doesn't have a set starting five yet. That, he hopes, gives the girls the drive to work harder in practice.

"I never name a set starting five," he said. "I want the girls to have something to shoot for before the season starts. I always feel if I name the starting five early on, then the girls will slack off in practice or just go through the motions. I usually don't name who is starting until just before our first game."

The main goal for the Lady Vikings this season is to improve on last year's season in all aspects of the game, not just record.

"As a coach, I want to win every game," said Matchock. "But, obviously, that isn't going to happen. I just want the girls to go out and play hard in every game. If we lose, we lose. But I want them to go into the locker room knowing that they tried

their best. There isn't much more you can ask for."

Glendale begins its season on Nov. 30 when it plays West Branch in the West Branch Tip-Off Tournament at 7:30 p.m.

November 30, 2007: Glendale 35 vs West Branch 51 (WB Tourn.)

By Jaclyn Yingling
Sports Editor

ALLPORT — The West Branch girls basketball team kicked off its season on the right note, topping Glendale, 51-35, in the opening round of the West Branch Tip-Off Tournament on Friday.

The Lady Warriors were led by solid performances from Kari Larson and Rebecca Kephart. Larson led the team with 19 points, while Kephart added 13.

"We were tight coming in," said West Branch head coach Doug Myers. "I could tell at the beginning of the game they were a little nervous. They realized that expectations are higher this year, and they have to live up to a certain standard of play. But as the game went on, they loosened up. We got a couple of baskets and they were alright."

Larson got things going for the Lady Warriors, scoring the first two baskets to give her team a 4-0 lead.

Samantha Noel knocked down a three to cut the score to 4-3, but it all West Branch from there.

The Lady Warriors went on a 10-2 run to end the first quarter with a 14-5 advantage.

Four of those points were scored by Kephart, while Larson added two free throws during the run.

"For the first game I thought we did okay," Glendale head coach John Matchock said. "The girls were a little bit nervous. For four of them, that's the first time they have ever played a varsity game. It was also the first time that a lot of them have gotten in that quickly for a varsity game."

"We have to work on the turnovers, but other than that I thought we played pretty decent for our first game."

West Branch scored the first six points of the second frame, with baskets from Brianna

Parks, Kristen Perks and Misty Modzel.

The Lady Vikings finally got their first points of the quarter when Whitney Strong hit two free throws after being fouled driving to the hoop.

Jolene Wesesky hit a jumper, followed by two Larson free throws to extend the Lady Warriors' lead to 24-7.

But Glendale fought back, scoring two straight buckets to cut the lead to 24-11.

The rally was short-lived, however, as Larson stole two straight balls and converted them into baskets, giving West Branch a 28-11 advantage.

The Lady Warriors held a 29-15 lead going into the locker room.

Glendale came out ready to play in the second half, going on a 7-2 run to start the third quarter that cut the score to 31-22.

"The man defense we played was not very good," Myers said. "I think Glendale scored three straight baskets coming out after the half. So we are going to have to work on that some more and make some adjustments."

Noel scored all three of the buckets, including a three-pointer to help her team's cause.

"Samantha is one of our main shooters," said Matchock. "She can put the ball in the hoop. But we need to get some other girls to step up. Hopefully, we got the rust off tonight and we can bounce back tomorrow."

The Lady Warriors got things righted after that, scoring three straight baskets to extend the lead back out to 37-22.

West Branch also scored the first three buckets of the fourth quarter. Two were from Kari Larson, while the third was from sister, Jada.

Sara Tarr hit a jumper to put the score at 43-27 before Kephart ripped off the next five points. That put the Lady Warriors up 48-27.

Glendale's Brianna Dick

added two three-pointers in the final two minutes, while teammate Brooke Wilson added her first varsity points. Roni Crowell added a three-pointer for West Branch to set the final at 51-35.

"We had a chance to get 11 kids in," Myers said. "The freshmen did a great job, as did our sophomores. We thought this might be a chance to be able to do that. I think the more they get experience, the more it helps."

The Lady Warriors will play Austin, a 53-28 winner over Grier, this evening at 7:30 p.m.

Glendale—35

Biddle 2 1-2 5, B. Dick 2 0-0 6, C. Dick 2 0-0 4, Me. Gates 0 0-0 0, Mi. Gates 0 0-0 0, Legrand 0 0-0 0, Noel 4 0-0 10, Strong 1 2-2 4, Tarr 2 0-0 4, Treese 0 0-1 0, Wilson 1 0-0 2.
Totals: 14 3-5 35.

West Branch—51

K. Larson 7 5-7 19, Parks 1 1-2 3, Wesesky 2 0-0 4, Perks 1 0-2 2, Kephart 6 1-2 13, Modzel 2 0-0 4, McDowell 0 0-0 0, Jarrett 0 1-2 1, Crowell 1 0-0 3, J. Larson 1 0-0 2, Arnold 0 0-0 0, Kopchik 0 0-0 0. Totals: 21 8-15 51.

Three-pointers: B. Dick 2, Noel 2; Crowell.

Score by Quarters

Glendale	5	10	10	10—35
West Branch	14	15	8	14—51

December 1, 2007: Grier 16 vs Glendale 61 (WB Tourn.)

Consolation Game Glendale 61, Grier 16

Samantha Noel scored 12 points, and teammate Whitney Strong added 11 as Glendale defeated Grier in the consolation game of the West Branch Tip-Off Tournament, 61-16.

Glendale broke out to a 15-8 lead after the first quarter and never looked back.

Morgan Biddle added eight rebounds and seven points in the victory, which helped the Lady Vikings improve to 1-1 on the season.

Every player on the Glendale roster scored at least one point in the game.

The Lady Vikings return to action on Tuesday when they host Bellwood-Antis.

Grier—16

Theiman 4 0-1 8, Beckett 3 0-3 6, Almer 0 0-0 0, Luce 1 0-0 2, DeSilva 0 0-0 0, Cherry 0 0-0 0, Sun 0 0-0 0, Negroponete 0 0-0 0, Lu 0 0-0 0, I. Lin 0 0-0 0. Totals: 8 0-4 16.

Glendale—61

Biddle 3 1-2 7, B. Dick 0 2-2 2, C. Dick 1 2-2 5, Me. Gates 1 0-0 2, Mi. Gates 2 0-0 4, Legrand 0 1-2 1, Noel 5 0-0 12, Strong 4 3-12 11, Treese 2 0-0 4, Tarr 2 1-2 5, Wilson 3 1-3 8. Totals: 23 11-25 61.

Three-pointers: Noel 2, C. Dick, Wilson.

Score by Quarters

Grier	8	2	4	2--16
Glendale	15	16	14	16--61

December 4, 2007: Bellwood 37 at Glendale 24

FLINTON — The Glendale girls basketball team was upended by visiting Bellwood-Antis on Tuesday evening, 39-24.

Morgan Biddle and Katie Treese each had five points for the Lady Vikings.

The Lady Blue Devils were victorious, 39-32, in the jayvee game.

Glendale is now 1-2 on the season and 0-1 in the Juniata Valley League.

The Lady Vikings host Harmony on Friday in a Moshannon Valley League matchup.

Bellwood-Antis—39

Collier 0 0-0 0, Ingram 3 0-0 7, M. Lombardo 0 0-0 0, Grannas 0 0-0 0, V. Lombardo 4 0-0 9, Lechner 4 0-0 9, Lender 0 3-4 3, Damiano 0 0-0 0, Jones 2 0-0 4, Cherry 0 0-0 0, Hippo 2 1-4 5, Ericson 1 0-3 2. Totals: 16 4-11 39.

Glendale—24

Biddle 2 1-2 5, B. Dick 0 2-2 2, C. Dick 1 1-2 3, Me. Gates 0 0-0 0, Mi. Gates 0 0-0 0, Legrand 1 1-2 3, Noel 1 0-0 2, Strong 0 2-5 2, Tarr 0 1-4 1, Treese 2 1-4 5, Twigg 0 0-0 0, Wilson 0 1-2 1. Totals: 7 10-23 24.

Three-pointers: Ingram, V. Lombardo, Lechner.

Score by Quarters

Bellwood-Antis	11	12	7	9--39
Glendale	3	13	1	7--24

December 7, 2007: Harmony 73 at Glendale 49

By Jaclyn Yingling
Sports Editor

FLINTON — It's no secret that the Glendale girls basketball team wanted to key on Harmony's Alyson Leyo on Friday evening.

Another thing that couldn't be kept secret was the fact that Leyo isn't her team's only weapon.

After Leyo got into foul trouble early, teammates Megan Brink and Lindsay Neff stepped up to help the Lady Owls down the Lady Vikings, 73-49.

"When Aly got in foul trouble in the second quarter, Megan really picked up her scoring from that point on," said Harmony head coach Chris Priester. "She did a good job of making some cuts to the basket and getting open. I thought Kierstyn (Kruise) and Makenzie (Kruise) and the rest of the girls did a good job of helping her do that."

Brink scored 20 of her game-high 24 points in the second half, while Neff added 17 points on the night.

All five of the Lady Owls starters scored at least four points, while Makenzie Kruise

and Christine Harkleroad scored four and three points, respectively, off the bench.

"Our key was to stop (Alyson) Leyo," Glendale head coach John Matchock said. "We knew she was left-handed and that she likes to go up with her left hand. When she went out of the game, we thought we could make a little run, but Harmony is just so good as a team. They play as a team and when you stop one, then you have Brink or the Kruise girls who can step up."

The Lady Vikings led early, as Sara Tarr drove down the court off the tip for a layup. Emily Leyo answered with a bucket for the Lady Owls, tying the game at 2-2.

Glendale's Morgan Biddle scored on her team's next possession to give it a 4-2 lead.

But it was all Lady Owls from there.

Alyson Leyo hit a jumper before Brink followed up with a basket after a Lady Vikings turnover.

Glendale had 28 turnovers in the game.

"We are still having some problems with the turnovers," Matchock said. "We are somewhat of a young team, so as the season goes on I hope it will get better. Right now, we are trying to force it too much when it isn't there, and not throwing it when it is there. I think as the season goes on, it will get better. We just have to go through some growing pains."

After being fouled attempting a putback basket, Alyson Leyo connected on both her foul shots to give Harmony an 8-4 advantage.

Whitney Strong finally broke the run with a foul shot, but the Lady Owls marched straight down the court and scored on another Brink bucket.

The Lady Vikings managed just three more points before the end of the first quarter, as the Lady Owls broke out to a 23-8 lead.

Neff had eight points in the frame, as did Alyson Leyo.

Makenzie Kruise scored the first points of the second quarter before Glendale put down the next five points off two baskets from Brianna Dick and another foul shot from Strong.

But the run didn't last long as the Lady Owls got a bucket off a rebound from Emily Leyo.

Harmony finished off the first half with a 10-3 run to take a 37-18 lead into the locker room.

"Offensively, I thought we did well overall," Priester said. "I would like them to work a little bit quicker, but we did pretty well."

"Defensively, we still gave up too many second shots, and we were out of position at times. There were just a few things that we need to work on."

The third quarter proved to be an even one for the two teams, as they traded baskets back and forth from the beginning of the frame.

Harmony still finished with a 15-13 advantage, but the Lady Vikings were able to hang with them.

The Lady Owls started off the fourth quarter with a 13-5 run thanks to Brink and Alyson Leyo, who accounted for all of the points.

Glendale was finally able to take advantage of some turnovers by Harmony in the

final frame, but the margin was just too wide.

"For some of the girls, this is the first time they are playing varsity," Matchock said. "We are seeing these teams for the first

time, but the second time around we will know what kind of defenses they like to play and what they do on offense. So, hopefully, the second time around we will fare a little better."

Biddle led the Lady Vikings with 11 points, while Dick added eight.

Alyson Leyo finished the night with 16 points and seven rebounds, despite fouling out with 4:04 remaining in the game.

"The girls did fine on the boards," Priester said. "We just gave up too many seconds shots. It's one of those things. You get the lead and then you think you are alright, so you stop doing some of the fundamental things. You can't do that, because Glendale was playing hard. If they would have got one more run, who knows what would have

happened. When you have a lead, you have to protect it.

"It's nice to get a league win on the road. It's not an easy place to play."

Harmony improved to 5-0 and 2-0 in the Moshannon Valley League. The Lady Owls host Ridgway on Monday.

Glendale dropped to 1-3 overall and 0-1 in the MVL. The Lady Vikes travel to West Branch on Monday.

Harmony also won the junior varsity game, 33-28. Alyson Leyo led all scorers with 11 points for the Lady Owls. Samantha Noel and Brooke Wilson each had six points for Glendale.

Harmony—73

A. Leyo 6 4-4 16, Brink 10 4-6 24, K. Kruise 2 0-0 5, E. Leyo 2 0-0 4, Harkleroad 1 0-0 3, Neff 5 7-8 17, M. Kruise 1 2-2 4, Westover 0 0-0 0, Clark 0 0-0 0. Totals: 27 17-20 73.

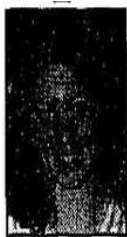
Glendale—47

Biddle 4 3-6 11, B. Dick 4 0-0 8, C. Dick 0 1-2 1, Me. Gates 0 0-0 0, Mi. Gates 0 0-0 0, Legrand 1 1-2 3, Noel 3 0-0 7, Strong 0 3-8 3, Tarr 3 1-2 7, Treese 1 4-4 6, Wilson 1 0-0 3. Totals: 16 13-24 47.

Three-pointers: K. Kruise, Harkleroad; Noel, Wilson.

Score by Quarters

Harmony	23	14	15	21—73
Glendale	8	10	13	18—49



Brink



Neff

December 10, 2007: Glendale 50 at West Branch 66

By Jaelyn Yingling
Sports Editor

ALLPORT — With a combined 58 turnovers in their game on Monday night, it was hard to tell who was going to come out on top between the West Branch and Glendale girls basketball teams.



Wesesky

But it was a 20-2 run by the Lady Warriors in the final minutes of the game that helped them rally to top the Lady Vikings, 66-50.

Jolene Wesesky had six of her 16 points during the run, including a big three-pointer that helped give West Branch a cushion in the closing minutes.

"Jolene hit a big three for us here at the end of the game," said West Branch head coach Doug Myers.

"We told Jolene that was the type of game we needed her to play. If she can keep that up and we can keep the balance, we should be pretty good."

The Lady Warriors played well early, jumping out to a 10-2 lead in the first quarter.

Kari Larson had four of the points, including one off a steal on an inbounds pass by Glendale.

The Lady Vikings had 19 turnovers in the first half.

Morgan Biddle gave Glendale its first points of the night at the 5:12 mark when she hit a layup.

Samantha Noel cut the lead to 10-8 with two straight three pointers, before Whitney Strong added a bucket to tie the game at 10-10.

Rebecca Kephart hit a basket to give the Lady Warriors back the lead, 12-10.

Biddle added a foul shot to put the score at 12-11 at the end of the first quarter.

Glendale took its first lead at the 6:46 mark of the second quarter after Noel put down another trev.

"We have to get better at the fundamentals," Myers said. "John (Matchock) had his kids prepared well. They played hard, and they hit some threes on us where we didn't get out quick enough.

"If we wouldn't kept up the pressure the whole game and got them when they were worn down a little bit, who knows what would have happen. It was tight the whole way."

The lead didn't last long, however, as Kari Larson hit a basket and a foul shot to give the Lady Warriors a 16-14 lead.

West Branch led the rest of the second quarter, taking advantage of several Lady Vikings turnovers to go up 29-19.

"We preached to them at half-time about turning over the ball," said Glendale head coach John Matchock. "We had 19 turnovers in the first half, and that's just 19 extra times we gave them the ball.

"We knew what they were going to do. We saw it the first time we played them. We had no problem with it the first time, but tonight we had a little bit of a problem with it. We knew what we were supposed to do, we just had so many unnecessary turnovers."

The Lady Vikings regained the lead in the third frame, going on a 15-5 run that was led by three treys from Noel.

Noel finished the night with a game-high 21 points.

Catie Dick also had two baskets in the frame.

"Samantha was on fire tonight," said Matchock. "I told her anytime she was open, she had to shoot. She's a good shooter, and she showed that tonight.

When that happens, everyone else starts making shots and it becomes contagious. We started hitting shots, and people started getting fired up."

West Branch finished off the frame with two buckets to regain the lead, 37-34.

But Glendale continued to hang with the Lady Warriors to begin the fourth.

Strong hit two straight jumpers, followed by a Noel foul shot to give Glendale a 39-37 lead.

"We came out in the third quarter and we didn't turn over the ball, and we got right back in it," said Matchock. "But in the fourth quarter the turnover demon reared its head, and West Branch capitalized and was able to put the ball in the hole."

Kari Larson tied the game at 39-39 with two free throws before Strong hit her third bucket of the frame.

The two teams traded the lead back and forth until Wesesky knocked down a foul shot to give West Branch a 47-46 lead.

The Lady Warriors never looked back, as Kephart added a putback basket and the ensuing foul shot to give her team a 50-46 advantage.

After a Mariah McDowell free throw, Glendale's Katie Treese scored to close the lead to within three points. That's when Wesesky hit her pivotal three points to extend the lead to 54-48.

West Branch finished off the frame with a 10-2 run to set the final at 66-50.

Larson finished the night with 17 points, while Kephart had 10. McDowell added 12 points and led all rebounders with 11 in the game.

"Mariah played outstanding," Myers said. "They covered Kari and they played her really hard. We tried to run her off the screens, but we were able to finally get her some points off the fast-break layups."

Glendale dropped to 1-4 overall and 0-2 in the Moshannon Valley League and 0-2 in the Juniata Valley League.

"You could tell the girls were getting excited that we were coming back," said Matchock. "West Branch is a good team, but us being as young as we are ... we were hanging with them.

"I think that's something positive that we can take and use for the rest of the year. As long as they keep improving, that's all I ask. Hopefully, we will start coming out on top in some of these close games."

West Branch is 3-3 overall, 2-0 in MVL and 1-2 in the JVL.

"We talked about not being able to look past anybody," Myers said. "We aren't that good yet. We have a lot of respect for their program.

"I think we might have been just a little to lax tonight. I'm not sure what we have to do. We just have to practice better and start getting the fundamentals down, because we have some tough games coming up."

West Branch travels to Williamsburg on Wednesday, while Glendale travels to Southern Huntingdon.

The junior varsity game was won by West Branch, 38-30. Roni Crowell led the Lady Warriors with 20 points. Brooke Wilson had nine for Glendale.

Glendale—50

Biddle 1 1-2 3, B. Dick 1 0-0 3, C. Dick 2 0-0 4, Me. Gates 1 0-0 2, Mi. Gates 1 0-0 2, Noel 7 1-2 21, Strong 4 0-0 8, Tarr 0 0-0 0, Treese 2 1-2 5, Wilson 0 0-2 0, Legrand 0 2-3 2. Totals: 19 5-13 50.

West Branch—66

K. Larson 6 5-8 17, Parks 1 0-5 2, Wesesky 5 4-6 16, Perks 1 0-0 2, Kephart 3 4-5 10, McDowell 4 4-8 12, Modzel 1 0-5 2, J. Larson 0 0-0 0, Crowell 1 0-0 2, Kopchik 1 1-1 3, Arnold 0 0-0 0. Totals: 23 18-38 66.

Three-pointers: Noel 6, B. Dick; Wesesky 2.

Score by Quarters

Glendale	11	8	15	16—50
West Branch	12	17	8	29—66

December 12, 2007: Southern Huntingdon 78 at Glendale 23

Glendale topped by SH

FLINTON — The Glendale girls basketball team was topped by visiting Southern Huntingdon, 78-23, on Wednesday evening.

Samantha Noel led the Lady Vikings with 11 points.

Glendale dropped to 1-4 overall and 0-3 in the Juniata Valley League. The Lady Vikings travel to Claysburg-Kimmel on Friday.

In the junior varsity game, the Lady Rockets were victorious, 33-28.

Sara Tarr had 10 points for Glendale.

Southern Huntingdon—78

Hershey 5 0-0 11, Speck 9 1-2 23, Shields 2 3-6 7, Hummel 6 2-2 15, Shope 2 0-0 5, Hall 3 2-3 9, Zinobile 0 0-0 0, Fish 3 0-0 8, Kern 0 0-0 0, Mastonik 0 0-1 0. Totals: 30 8-14 78.

Glendale—23

C. Dick 0 2-2 2, B. Dick 0 0-0 0, Mi. Gates 0 1-4 1, Me. Gates 0 0-0 0, Treese 2 0-2 4, Twigg 0 1-2 1, Noel 5 0-0 11, Strong 1 0-2 2, Legrand 0 0-2 0, Tarr 1 0-0 2, Wilson 0 0-0 0. Totals: 9 4-14 23.

Three-pointers: Speck 4, Fish 2, Hershey, Hummel, Shope, Hall; Noel.

Score by Quarters

So. Huntingdon	24	23	19	12—78
Glendale	3	13	2	5—23

December 14, 2007: Glendale 44 at Claysburg 55

Glendale tripped up by CK

CLAYSBURG — The Glendale girls basketball team had a slow first half on Friday evening, falling to Claysburg-Kimmel, 55-44.

Samantha Noel had five three-pointers for a total of 15 points to lead the Lady Vikings. Katie Treese added 10 points for Glendale.

The Lady Vikes fell to 1-6 overall. They travel to Moshannon Valley on Tuesday.

In the junior varsity game, Glendale won in overtime, 26-23. Brooke Wilson led the Lady

Vikes with 11 points.

Glendale—44

C. Dick 3 1-1 8, B. Dick 1 0-0 3, Legrand 0 0-0 0, Noel 5 0-0 15, Strong 1 1-4 3, Tarr 0 0-0 0, Treese 4 0-0 10, Twigg 2 0-3 4, Wilson 0 1-2 1. Totals: 16 3-10 44.

Claysburg-Kimmel—55

Iachini 3 7-10 13, Claar 1 1-2 3, Luciano 4 1-2 11, Gerheim 6 0-0 13, Sybert 3 1-2 7, Ke. Harten 1 0-0 3, Ka. Harten 0 0-0 0, McDonald 2 0-0 4, Swope 0 1-2 1, Yingling 0 0-0 0, Kittle 0 0-0 0. Totals: 20 11-18 55.

Three-pointers: Noel 5, Treese 2, C. Dick, B. Dick; Luciano 2, Gerheim, Ke. Harten.

Score by Quarters

Glendale	6	11	13	14—44
Claysburg-Kimmel	14	17	12	12—55

December 18, 2007: Glendale 37 at MoValley 53

By Jon Christoff
Sports Writer

AMESVILLE — For the first half of Tuesday night's girls basketball game, Glendale gave Moshannon Valley all it could handle.

In fact, the Lady Vikings held a 27-26 lead at halftime, but the Damsels made adjustments at the intermission and rode the energy of an amped-up students' section to a 53-37 win at Monte Close Gymnasium.

Mo Valley regained the lead for good 15 seconds into the third quarter and outscored Glendale 14-3 in the period. The Lady Vikings were on the short end of a 13-0 run when Samantha Noel knocked down her only bucket of the second half with 1:40 to play, and were outscored 27-10 through the final 16 minutes.

The win marked the third in a row for the Damsels, who improved to 3-2 on the season.

"Since I've been here, I think this is the first time we've won three in a row," said Mo Valley head coach Aaron Mills, who was an assistant the previous four seasons. "It's big because the girls' spirit is high and their confidence is high. They're playing hard, smart, aggressive basketball. Now we just need to keep it going."

For Glendale, it marked its sixth-straight loss despite improved play from the beginning of the season. The Lady Vikings played well in spurts, but it wasn't enough to derail Mo Valley.

"The last game we played, we played poorly in the first half, and the second half was great. This time it was the first half great and the second half bad," Glendale head coach John Matchock said. "The game is four quarters. You can't just play two and call it a night. You have to play all four and, right now, we're not doing that."

"We played pretty well the first half. I was impressed. The second half they went to a box-and-one on Noel, and I didn't think it'd give us that much trouble. We were just giving Mo Valley the ball, and we can't keep doing that every game and expect to win. We can't be having turnovers all the time, and it came back to bite us again."

Noel and Tiffany Twigg combined to score 21 first half points, which brought Glendale from a

10-2 deficit in the first quarter. Noel's three-pointer to open the second tied the game at 10, and began the offensive onslaught from both teams.

Twigg scored six points in the paint, while Noel hit three treys in the stanza.

For everything the Lady Vikings did, the Damsels had an answer.

Taylor Murarik hit all four of her foul shots in the frame, while Shannon Greslick added four points, as neither team led by more than a pair.

Twigg hit her final shot with 10 seconds left in the half to make it a 27-26 game at the break.

From there, it was all Damsels.

Mo Valley changed from a half-court trap to a box-and-one and a triangle-and-two to try to keep Noel and Twigg in check, and it worked.

The Glendale duo combined for two second-half points.

"Obviously, the Noel girl came out and pretty much kept them in the game. Her and Twigg both," said Mills. "They ran a triangle-and-two and a box-and-one on us and shut us down in the first half, so at halftime we decided to do the same thing. We put Taylor on Noel, and she shut her down in the second half. It really changed the flow of the game."



Murarik

Greslick's only bucket of the second half put Mo Valley up 28-27, while Murarik, Jordan Cook and Vanessa Rowley chipped in to make it a 36-27 game with 5:47 left in the period.

Katie Treese canned a three for Glendale, but it was the only bucket the Lady Vikings had in the quarter. Cook and Kierstin Elder netted buckets to make it a 10-point lead for the Damsels heading into the final quarter of play.

Cook led all scorers with 15 points, including going 5-of-7 from the charity stripe.

"She's been coming up huge, and she does a fantastic job with the leadership role she's taken on," Mills said. "She's taking smart shots this year, and she

isn't rushing things. She's hitting the boards ... she's doing everything we need her to do."

As a team, Mo Valley went 16-of-27 from the line. Conversely, the Lady Vikings connected on just four of 18 attempts.

"We tell the girls they have to play defense by moving their feet — they can't reach. Tonight, we were reaching," said Matchock. "When we go to the foul line, we can't make them. Everyone shoots them at practice, but when it comes to a game we can't make them. We

just seem to lose our focus. These are things we have to improve on."

Murarik netted four more of her 12 points in the fourth, while Cook also had four in the final frame for Mo Valley.

Brooke Wilson connected on a pair of foul shots and a three-pointer down the stretch for the Lady Vikings, who dipped to 1-7 on the season.

Mo Valley improved to 1-1 in the Moshannon Valley League and 3-1 in the Juniata Valley League, while Glendale dropped to 0-3 and 0-5, respectively.

"We weren't getting to the foul line enough in the first three games, then against Juniata Valley we got to the line 30-some times," Mills said. "I told the girls, 'we need three girls to score in double digits and we need to get to the line — just keep driving to the basket, getting to the line and converting it.' That's what you have to do to win, and that's what we did tonight."

There was no junior varsity game.

The Damsels host Bellwood-Antis on Friday evening, while the Lady Vikings travel to Juniata Valley on Thursday.

Glendale—37

C. Dick 0 0-0 0, Noel 4 2-5 13, Strong 1 0-2 2, Treese 1 0-1 3, Twigg 5 0-2 10, B. Dick 1 0-2 2, Legrand 1 0-3 2, Tarr 0 0-0 0, Wilson 1 2-3 5, Me. Gates 0 0-0 0. Totals: 14 4-18 37.

Moshannon Valley—53

Cook 5 5-7 15, Elder 1 1-2 3, Rowley 2 1-6 5, Murarik 4 4-4 12, Greslick 3 5-6 11, McQuown 1 0-0 2, Dipko 0 0-0 0, Supenia 0 0-0 0, Gallo 1 0-0 3, Harlow 0 0-0 0, Kitko 0 0-2 0, Charney 1 0-0 2. Totals: 18 16-27 53.

Three-pointers: Noel 3, Treese, Wilson; Gallo.

Score by Quarters

Glendale	7	20	3	7—37
Moshannon Valley	10	16	14	13—53

December 20, 2007: Glendale 44 at Juniata Valley 50

ALEXANDRIA — The Glendale girls basketball team dropped a 50-44 decision at Juniata Valley on Thursday night.

The Lady Vikings got 16 points from Samantha Noel, while Tiffany Twigg added 10.

Glendale dropped to 1-8 overall and 0-6 in the Juniata Valley League, while the Lady Green Hornets improved to 1-5 in league play.

There was no junior varsity game.

The Lady Vikings face Penn Cambria at the Williamsburg

Tournament on Dec. 28.

Glendale—44

Biddle 1 2-2 4, B. Dick 0 1-2 1, C. Dick 0 0-0 0, Me. Gates 0 0-0 0, Legrand 1 0-0 3, Noel 4 6-6 16, Strong 0 1-4 1, Tarr 0 0-0 0, Treese 3 3-4 9, Twigg 3 4-6 10, Wilson 0 0-0 0. Totals: 12 17-24 44.

Juniata Valley—50

McAllister 3 4-4 10, Morgan 4 2-2 10, Brennaman 5 0-0 10, Boyd 4 6-10 14, Taylor 0 0-0 0, Stallman 2 0-2 4, Briggs 1 0-0 2, Serger 0 0-2 0, Houck 0 0-0 0, Snyder 0 0-0 0. Totals: 19 12-20 50.

Three-pointers: Noel 2, Legrand.

Score by Quarters

Glendale	8	12	11	13—44
Juniata Valley	10	19	8	13—50

December 28, 2007: Glendale 15 vs Penn Cambria 49 (William. Tourn.)

WILLIAMSBURG — The Glendale girls basketball team fell to Penn Cambria, 49-15, at the Williamsburg Tournament on Friday night.

Brooke Wilson led the Lady Vikings with four points.

Glendale (1-9) plays United in the consolation game tonight. Tip-off is set for 6 p.m.

Penn Cambria—49

Rieg 4 1-2 11, Krug 2 1-2 6, Urbanek 5 0-0

11, Creehan 3 3-4 9, Orr 1 0-0 3, Delic 4 0-0 9, Bruce 0 0-0 0, Pyo 0 0-0 0, Garrett 0 0-0 0. Totals: 19 5-8 49.

Glendale—15

Biddle 1 1-8 3, B. Dick 0 0-0 0, C. Dick 0 0-0 0, Me. Gates 1 0-0 2, Legrand 0 1-2 1, Noel 1 0-0 3, Strong 1 0-0 2, Tarr 0 0-0 0, Treese 0 0-0 0, Twigg 0 0-0 0, Wilson 1 2-2 4. Totals: 5 4-12 15.

Three-pointers: Rieg 2, Krug, Urbanek, Orr, Delic; Noel.

Score by Quarters

Penn Cambria	18	12	19	0—49
Glendale	2	2	5	6—15.

December 29, 2007: Glendale 45 vs United 43 (William. Tourn.)

WILLIAMSBURG — The Glendale girls basketball team won its second game of the season Saturday night, defeating United 45-43 in the consolation game of the Williamsburg Tournament.

The Lady Vikings were led by Samantha Noel, who scored 12 points on the night and was named to the All-Tournament team. Tiffany Twigg also pitched in eight points.

"The fourth quarter we played as a team," Glendale head coach John Matchock said.

"We played excellent defense, didn't turn the ball over, made our foul shots and were unselfish with the basketball. If we continue to do those things, we will have more success the second half of the season."

Glendale (2-9) will try to build

on its performance when it hosts Curwensville on Wednesday.



Noel

United—43

Perry 6 4-5 18, Montgomery 3 1-2 8, Merie 1 0-0 3, Ramsden 3 4-5 10, Isenberg 0 0-0 0, Warfel 0 0-0 0, Yaworkshi 0 0-0 0, Kuzmyak 1 0-0 2, McGaha 0 2-4 2. Totals: 14 11-16 43.

Glendale—45

Biddle 2 0-0 4, B. Dick 0 2-2 2, C. Dick 1 0-0 2, Me. Gates 1 0-0 2, Legrand 1 2-2 4, Noel 4 1-2 12, Strong 3 1-2 7, Tarr 0 0-0 0, Treese 1 1-2 4, Twigg 3 2-2 8, Wilson 0 0-0 0. Totals: 16 9-12 45.

Three-pointers: Perry 2, Montgomery, Merie; Noel 3, Treese.

Score by Quarter

United	15	11	5	12—43
Glendale	5	8	7	25—45

January 2, 2008: Curwensville 36 at Glendale 63

Glendale girls down Curwensville thanks to hot three-point shooting

By Jon Christoff
Sports Writer

FLINTON — The Glendale girls basketball team lives and dies by the three-pointer.

The Lady Vikings were certainly alive against Moshannon Valley League rival Curwensville on Wednesday night in Flinton, where they knocked down a season-high 11 trifectas en route to a 63-36 win.

The win was Glendale's second straight, giving it consecutive wins for the first time since January 2006.

"The girls were a little excited," said Glendale head coach John Matchock. "(Going into the Williamsburg Tournament) the past two games we've won were against Grier, and I think the win against United gave them a little bit of confidence.

"We started out a little slow tonight because our shots weren't falling. I told them to keep shooting, and eventually as the game went on, they started



Noel

to fall and we started to put some points up."

In the first quarter, the points were scarce for the Lady Vikings. Curwensville held an 11-7 advantage late in the quarter before the Lady Vikings' Morgan Biddle and the Lady Tide's Alesia Bressler traded hoops to make it a 13-9 game after the first.

Glendale held a five-rebound advantage over the Lady Tide through the first eight minutes and forced six turnovers, but still couldn't capitalize on Curwensville's misfortunes.

The Lady Tide, who were playing without guard Hannah Walls, took an 18-15 lead on foul shots from Tess Bloom before Glendale made its first run of the quarter.

The Lady Vikings scored 10 unanswered points, thanks to

the torrid shooting of Brianna Dick. Dick knocked down shot after shot in the stanza, including a pair of threes, to finish with 14 points in the quarter.

Curwensville roared back, however, as Bloom netted three points and Jenae Stiles knocked down a pair from the charity stripe to make it a 25-23 game with 1:35 remaining in the half.

From there, it was all Glendale.

Dick and Samantha Noel hit back-to-back treys for the Lady Vikings, who capped the half with a 7-0 run after a Catie Dick foul shot. Dick's foul shot gave Glendale a 32-23 lead at the break.

"We hit a couple of threes there at the end, and that gave us some momentum going into the locker room," Matchock said. "We were ready to come out in the second half, and we picked right back up where we left off."

Glendale did pick up where it

left off, hitting shot after shot from behind the arc, while the Lady Tide continued to struggle.

Bloom scored six of Curwensville's eight points in the third and led the Lady Tide with 15 points, but Noel's hot hand kept the game out of reach.

Noel hit three three-pointers in the quarter, as Glendale built up a 47-31 lead after the third.

"We find ways to take ourselves out of the game right at the end of the quarter," said Curwensville coach Vic Gearhart. "It seems like we can't do the things we need to do right before the half and, if we're in a tight game, we still get the jitters in the fourth quarter. It's like they don't want to handle the pressure very well and it was obvious that's what killed us tonight with their press."

Noel added another trey in the fourth and finished with a game-high 20 points, while Catie



B. Dick

Dick also had a strong final period.

Dick knocked down a pair of threes of her own, as Glendale cruised to the victory.

Stiles hit

Curwensville's only three-pointer in the fourth quarter to account for three of the Lady Tide's five points in the stanza. A pair of foul shots from Bressler were the others.

"We had the looks," said Gearhart. "I was pleased with the shots we got, we just didn't can anything. We had a couple of putback rebounds that didn't go in, we took the ball to the hoop ... they did a couple of nice things tonight. We were short-handed without Hannah, but I wasn't too displeased. It was a matter of six girls getting worn down."

By comparison, Curwensville's only three-point

attempt came from Stiles with 51 seconds remaining in the contest, while the Lady Vikings connected on 11-of-41 from behind the arc.

"We told the girls at halftime to just keep shooting," said Matchock. "They were playing a zone against us, and all we had to do was the pass the ball around and wait for the open shots. Samantha, just like Brianna in the first half, got hot in the second half and she kept shooting."

Glendale improved to 3-9 on the season and 1-3 in the MVL, while Curwensville dropped to 0-9 and 0-3.

The Lady Vikings won the jayvee game, 35-11, behind 15 points from Sara Tarr. The Lady Tide got nine points from Courtney Bachelier in the loss.

Both teams return to action this evening, as Glendale travels to Williamsburg and Curwensville hosts Kane.

Curwensville—36

Bloom 3 9-11 15, Jenessa Stiles 0 0-0 0, Desmett 1 0-0 2, Bressler 2 2-2 6, Fink 3 2-4 8, Jenae Stiles 1 2-2 5, Bracken 0 0-0 0, Buzard 0 0-0 0, Bachelier 0 0-0 0, Bumbarger 0 0-0 0.
Totals: 10 15-19 36.

Glendale—63

B. Dick 8 0-0 18, Strong 0 0-0 0, Treese 1 1-1

3, Twigg 0 0-0 0, Noel 6 2-4 20, Legrand 2 1-2 5, C. Dick 2 1-2 7, Biddle 1 2-4 4, Tarr 1 0-0 2, Me. Gates 0 1-2 1, Mi. Gates 0 0-0 0, Wilson 1 0-0 3. Totals: 22 8-15 63.

Three-pointers: Jenae Stiles; Noel 6, B. Dick 2, C. Dick 2, Wilson.

Score by Quarters

Curwensville	13	10	8	5—36
Glendale	9	23	15	16—63

January 3, 2008: Glendale 27 at Williamsburg 60

WILLIAMSBURG — Glendale was defeated by host Williamsburg, 60-27, on Thursday evening in Juniata Valley League girls basketball action.

Samantha Noel paced the Lady Vikings with seven points. Glendale dropped to 3-10 overall.

The Lady Vikings travel to Mount Union on Monday.

In jayvee action, the Lady Pirates won 52-14.

Brooke Wilson had five points in the loss.

Glendale—27

Biddle 1 0-0 2, B. Dick 0 1-2 1, C. Dick 0 1-2 1, Me. Gates 0 0-0 0, Mi. Gates 0 0-0 0, Legrand 3 0-0 6, Noel 1 4-4 7, Strong 3 0-2 6, Tarr 0 0-2 0, Treese 1 0-0 2, Twigg 1 0-0 2, Wilson 0 0-0 0. Totals: 10 6-12 27.

Williamsburg—60

Peck 4 1-2 11, Mingle 2 0-0 6, Wyland 3 4-5 10, Fay 2 0-0 4, Hileman 7 1-2 16, Becker 2 1-2 5, Saylor 0 0-0 0, Bookhammer 0 0-0 0, Harker 1 0-0 2, Barroner 0 0-0 0, Everhart 2 0-0 4, Shaw 1 0-0 2. Totals: 24 7-11 60.

Three-pointers: Noel; Peck 2, Mingle 2, Hileman.

Score by Quarters

Glendale	4	12	4	7—27
Williamsburg	13	21	22	4—60

January 7, 2007: Glendale 28 at Mt. Union 38

MOUNT UNION — The Glendale girls basketball team traveled to Mount Union on Vikings with seven points, and Morgan Biddle and Katee Treese pitched in five apiece.

Glendale will step back on the court tomorrow night when they head to Bellwood-Antis.

Monday night, where they fell 38-28.

Samantha Noel led the Lady Vikings with seven points, Tarr 3, Tarr 0 0-0 0, Treese 1 3-4 5, Twigg 2 0-2 4, Wilson 0 2-4 2. Totals: 7 12-22 28.

Mount Union—38

Kurtz 10 0-0 23, Atherton 0 2-2 2, Walters 0 1-3 1, Bookwalter 2 0-0 4, Woods 0 2-2 2, Kyler 0 0-0 0, Turner 3 0-0 6. Totals: 15 5-7 38.

Three-pointers: Noel 2; Kurtz 3.

Score by Quarters

Glendale	9	7	2	10—28
Mount Union	7	11	11	9—38

Glendale—28

Biddle 1 3-6 5, B. Dick 0 0-0 0, C. Dick 0 0-0 0, Legrand 1 0-0 2, Noel 2 1-2 7, Strong 0 3-4

January 9, 2018: Glendale 50 at Bellwood 64

BELLWOOD — The Glendale girls basketball fell to host Bellwood-Antis, 64-50, on Wednesday.

Samantha Noel scored 13 points for the Lady Vikings, while Brooke Legrand added 12.

The Lady Vikings dropped to 3-12 overall and 0-9 in the Juniata Valley League.

Bellwood won the jayvee game, 31-25. Morgan Biddle scored nine points for the Lady Vikings.

Glendale returns to action Tuesday, playing host to West Branch.

Glendale—50

Biddle 1 0-0 2, B. Dick 0 3-4 3, C. Dick 1 0-1 3, Me. Gates 1 0-0 2, Mi. Gates 0 0-0 0, Legrand 5 2-2 12, Noel 4 4-5 13, Strong 3 2-3 8, Treese 3 1-2 7, Twigg 0 0-0 0. Totals: 18 12-17 50.

Bellwood-Antis—64

Collier 0 0-0 0, M. Lombardo 0 0-0 0, V. Lombardo 4 2-5 11, Grannas 2 0-0 4, Lechner 2 0-0 6, Lender 1 6-6 8, Erickson 8 3-4 19, Damiano 1 0-0 2, Cherry 0 0-0 0, Hippo 5 4-4 14. Totals: 23 15-19 64.

Three-pointers: C. Dick, Noel; Lechner 2, V. Lombardo.

Score by Quarters

Glendale	14	9	16	11—50
Bellwood-Antis	9	15	16	24—64

January 15, 2008: West Branch 49 at Glendale 40

By Jaclyn Yingling
Sports Editor

FLINTON — It's not too often that teams get to play each other three times in one season.

But for the West Branch and Glendale girls basketball teams, it's been almost a yearly tradition since the two started playing in the West Branch Tip-Off Tournament to start off the season.

Unfortunately for the Lady Vikings, the Lady Warriors had already won their previous two meetings. Things didn't change on Tuesday evening either, as West Branch held off a late-charging Glendale squad for a 49-40 victory.

"We really didn't play very well tonight," said Lady Warriors head coach Doug Myers. "I told the girls we had a bad night. But we need to be able to turn around and play better and not lose our confidence. We missed a lot of shots tonight, and we had too many turnovers."

West Branch's Rebecca Kenhart dropped in the first basket of the game, before Glendale's Katie Treese tied the game with a jumper.

Samantha Noel was fouled on a drive to the basket and hit one of her two foul shots to give the Lady Vikings their only lead of the game, 3-2.

It was all West Branch from there in the first quarter, as Kari Larson, Brianna Parks and Kephart knocked down three straight baskets to take an 8-3 lead.

"We always start out so sluggish in the first half," said Glendale head coach John Matchock. "It seems like we dig ourselves just a deep enough hole that we can't come back in the second half. We did that tonight. I keep telling the girls they have to start getting into a rhythm earlier and not wait so long."

Brooke Legrand scored just before the buzzer for Glendale to cut the lead to 8-5.

Tiffany Twigg scored for the Lady Vikings to start the second quarter, trimming the West

Branch lead to 8-7.

But Glendale struggled with turnovers and slow rebounding, and the Lady Warriors went on an 8-0 run after that to increase their lead to 16-7.

Noel drained a trey to keep it within 16-10, but West Branch closed out the half with a bucket from Parks and a free throw each from Misty Modzel and Larson to take a 20-10 advantage.

"I thought we did okay on the boards in the first half," said Myers. "We were able to force some turnovers and get some baskets out of them."

The Lady Vikings looked like a totally different team in the second half, scoring the first two baskets to cut the lead to 20-14.

But West Branch continued to pressure Glendale, and was able to force some turnovers. But the Lady Warriors also struggled to keep control of the ball, and the two teams wound up trading baskets back and forth, each scoring 14 points in the frame.

"We were a lot more physical in the second half," Matchock said. "The girls will sometimes complain that the other teams push them around, but I told them they need to get in there and be more aggressive. We did that in the second half, but by then it was too late."

Larson scored to start the final frame, but was quickly answered by two Morgan Biddle baskets.

Kephart and Larson each scored to give West Branch a 40-28 lead.

But Glendale went on a 7-0 run to cut the advantage to 40-35.

After both Larson and Legrand scored, Larson was fouled and connected on one of her two shots to put the score at 43-37.

Legrand nailed a three-pointer after a Lady Warrior turnover to trim the score to 43-40 with 51 seconds left on the clock.

West Branch called a timeout to regroup, and then substituted in Roni Crowell for both her defense and her foul-shooting ability.

Crowell proceeded to steal the

ball back after another Lady Warrior turnover, then drew the foul. She made one of her two shots to give West Branch a 44-40 lead.

The feisty Lady Warrior then helped force another turnover that led to a Larson bucket and free throw with 14.1 seconds remaining.

The points sealed the game for West Branch, which added another Larson bucket at the buzzer to set the final at 49-40.

"We put Roni in there for a reason," Myers said. "She plays really well on defense and she had some great plays there at the end that really helped us out. She's also a state champion free-throw shooter, so we like to have her out there when there could be some foul shots involved."

Larson led all scorers with 21 points, and is now just 10 points shy of the 1,000-point milestone. Kephart added 14 points.

Legrand led the Lady Vikings with 11 points.

Glendale fell to 3-13 overall, 1-4 in the Moshannon Valley League and 0-10 in the Juniata Valley League. The Lady Vikings travel to Southern Huntingdon on Friday.

West Branch improved to 10-6 overall, 4-2 in the MVL and 7-4 in the JVL.

West Branch won the junior varsity game, 37-26. Jada Larson paced the Lady Warriors with 14 points and 13 rebounds.

Victoria Jarrett added 10 points, while Bethany Kopchik had 13 rebounds. Morgan Biddle led the Lady Vikings with nine points.

West Branch—49

K. Larson 7 7-9 21, Parks 4 0-5 8, Perks 1 0-0 2, Kephart 7 0-0 14, Wesesky 1 0-0 2, Modzel 0 1-2 1, McDowell 0 0-2 0, Arnold 0 0-0 0, Crowell 0 1-3 1. Totals: 20 9-21 49.

Glendale—40

B. Dick 1 0-0 2, C. Dick 0 0-0 0, Twigg 2 0-0 4, Noel 2 1-2 7, Strong 3 0-1 6, Legrand 5 0-0 11, Biddle 4 0-0 8, Tarr 0 0-0 0, Treese 1 0-0 2. Totals: 18 1-3 40.

Three-pointers: Noel 2, Legrand 1.

Score by Quarters

West Branch	8	12	14	15—49
Glendale	5	5	14	16—40

January 18, 2008: Glendale 34 at Southern Huntingdon 77

THREE SPRINGS — The Glendale girls basketball team fell to host Southern Huntingdon on Friday evening, 77-34.

Samantha Noel paced the Lady Vikings with 23 points, including four three-pointers.

Glendale dropped to 3-14 overall and 0-11 in the Juniata Valley League. The Lady Vikings host Claysburg-Kimmel on Monday.

In jayvee action, the Lady Rockets won, 57-31. Morgan Biddle scored 20 points for Glendale.

Glendale—34

Biddle 1 0-0 2, B. Dick 1 1-2 4, Me. Gates 0 0-0 0, Mi. Gates 0 0-0 0, Legrand 0 0-0 0, Noel 6 7-9 23, Strong 1 0-1 2, Tarr 0 0-0 0, Treese 1 0-0 3, Twigg 0 0-0 0, Wilson 0 0-0 0. Totals: 10 8-12 34.

Southern Huntingdon—77

Hershey 6 0-0 13, Speck 11 0-0 25, Shields 4 5-7 13, Hummel 7 3-3 18, Shope 1 0-0 2, Hall 0 0-0 0, Zinobile 3 0-0 6, Fish 0 0-0 0, Kern 0 0-0 0. Totals: 32 8-10 77.

Three-pointers: Noel 4, B. Dick, Treese; Speck 3, Hershey, Hummel.

Score by Quarters

Glendale	13	11	5	5—34
So. Huntingdon	25	12	21	19—77

January 21, 2007: Claysburg 35 at Glendale 38

FLINTON — The Glendale girls basketball team defeated visiting Claysburg-Kimmel, 38-35, Monday night.

Samantha Noel scored 16 points to lead the Lady Vikings, while Tiffany Twigg netted 12.

The win was Glendale's first in the Juniata Valley League. The Lady Vikings improved to 4-14 overall and 1-11 in the league.

"We played good as a team, and we played real good defense," Glendale head coach John Matchock said.

The Lady Vikings won the jayvee game, 31-28, in overtime.

Brooke Wilson paced the winners with 13 points.

Glendale is back in action tonight at Curwensville.

Claysburg-Kimmel—35

Iachini 4 5-10 14, Gerheim 2 1-2 5, Luciano 1 0-3 2, Sybert 1 1-2 3, Swope 3 2-2 8, Harten 1 0-2 2, McDonald 0 1-4 1. Totals: 12 10-23 35.

Glendale—38

Biddle 0 0-0 0, B. Dick 1 0-0 2, Legrand 1 2-4 4, Noel 4 5-6 16, Strong 0 1-2 1, Tarr 0 0-0 0, Treese 1 1-7 3, Twigg 4 4-6 12. Totals: 11 13-25 38.

Three-pointers: Iachini; Noel 3.

Score by Quarters

Claysburg-Kimmel	6	5	4	20—35
Glendale	13	9	8	8—38

January 22, 2008: Glendale 54 at Curwensville 17

By Jon Christoff
Sports Writer

CURWENSVILLE — After picking up a big win over perennial power Claysburg-Kimmel on Monday, the Glendale girls basketball team followed it up with a win over Curwensville, which has won or shared the Moshannon Valley League title the last couple of years, on Tuesday evening at Patton Hall.

The Lady Vikings' defense suffocated the Lady Tide and limited Curwensville to 6-of-51 shooting from the floor in a 54-17 win.

"I've been preaching to the girls about good defense, boxing out, getting a hand in their face and playing an arm's length away," said Glendale head coach John Matchock. "Last night we did the same thing — Claysburg took a lot of shots, we just rebounded well. Curwensville got their shots, but it was one shot and done. That's what we needed to do. You can't let teams have second and third opportunities."

While the Glendale defense was forcing problems, the offense went on without missing a beat.

The Lady Vikings raced out to a 16-0 lead to open the game, before Tess Bloom's foul shot with 25 seconds in the quarter got Curwensville on the scoreboard. Katie Treese ended the first with a three-pointer for Glendale.

Samantha Noel led the charge in the opening quarter, knocking down two of her three three-pointers in the frame.

Brianna Dick also had a strong quarter, netting four points, and it carried through the rest of the game. Dick scored four more in the second and connected on three treys in the second half to finish with a game-high 17 points.

Dick scored 35 points in two meetings with Curwensville.

"I think Brianna just likes playing Curwensville for some reason," Matchock said. "She had 18 the last time we played, and she had 17 tonight. It seemed like everything she shot was going in. Samantha's basically the same way — if she gets open against anyone, she's going to shoot from anywhere."

Curwensville's Hannah Walls nailed her team's first bucket to open the second quarter, where the Lady Tide were only outscored 9-7.

Walls finished with a team-high six points.

The Lady Vikings carried a 28-8 lead into halftime.



B. Dick

Glendale's starters began the third quarter by going 4-for-4 from the field, including three trifectas, during the first 2:13 of the second half. The Lady Vikings got a pair of threes from Dick and another from Noel, while Brooke Legrand's jumper completed the 11-0 run.

Matchock went to the bench with 5:47 left on the third-quarter clock. Neither team was able to find the bottom of the bucket the remainder of the quarter.

Curwensville was outscored 30-1 in the first and third quarters while it went 0-for-25 from the field.

"We just wanted to take it quarter-by-quarter, and that's what we did tonight," said Matchock.

"We did that last night, but we kind of let Claysburg back in the game. We wanted to make sure we didn't do that, and we played pretty good defense the whole game."

Seven different Lady Viking players scored in the final eight minutes, where Glendale outscored Curwensville, 15-9, to set the final.

Alesia Bressler netted all of her four points in the fourth.

Glendale improved to 5-14 on the season and 2-5 in the Moshannon Valley League. Curwensville dropped to 0-17 and 0-7.

The Lady Vikings round out their MVL slate on Friday when they host Moshannon Valley, while the Lady Tide travel to Kane on Thursday.

Glendale won the junior varsity game, 46-12.

Brooke Wilson led the Lady Vikings with 13, while Morgan Biddle chipped in with 11.

Taylor Bumbarger paced Curwensville with five.

Glendale—54

B. Dick 7 0-0 17, Legrand 3 0-0 8, Noel 4 0-0 11, Strong 0 1-2 1, Twigg 1 0-0 2, Treese 4 0-0 9, Biddle 1 0-0 2, Tarr 0 2-2 2, Mi. Gates 1 0-0 2, Me. Gates 0 0-2 0, Wilson 0 0-0 0. Totals: 21 3-6 54.

Curwensville—17

Walls 3 0-0 6, Bloom 0 2-4 2, Fink 1 1-2 3, Bressler 1 2-2 4, Desmett 1 0-2 2, Janessa Stiles 0 0-0 0, Janea Stiles 0 0-0 0, Bumbarger 0 0-0 0, Robb 0 0-0 0, Bracken 0 0-0 0, Bachelier 0 0-0 0, Buzard 0 0-0 0. Totals: 6 5-10 17.

Three-pointers: B. Dick 3, Noel 3, Legrand 2, Treese.

Score by Quarters

Glendale	19	9	11	15—54
Curwensville	1	7	0	9—17

January 25, 2007: MoValley 49 at Glendale 39

By Jon Christoff
Sports Writer

FLINTON — Friday night's girls basketball game between Moshannon Valley and Glendale had a feeling of déjà vu to it.

In their first meeting back in December, the Damsels trailed the Lady Vikings by a point at halftime, only to come storming back for a double-digit win.

Mo Valley trailed Glendale, 26-25, heading into the locker room on Friday in Flinton, but the Damsels' strong second half propelled them to a 49-39 win.

The Damsels got a strong fourth-quarter performance from Vanessa Rowley, who netted eight of her 15 points in the final stanza.

Rowley gave the Lady Vikings' defense fits, driving through the lane and dishing off to open teammates if the shot wasn't there. Jordan Cook also had a strong fourth, netting four, to help lead Mo Valley to the win.

"That's exactly what we tell her to do every single game," said Mo Valley head coach Aaron Mills of Rowley. "She's so quick and so good with the ball it'd be a waste of talent not to take it to the basket and attack. We tell her all the time, 'if a girl can't stay with you, attack the basket,' and she did that in the fourth quarter."

The Mo Valley defense was also stout in the final eight minutes, forcing five of Glendale's 12 turnovers in the period.

The Damsels tried a box-and-one on Glendale's Samantha Noel through the first half, but went man-to-man for the final 16 minutes. Taylor Murarik, who shadowed Noel throughout, picked up her fifth foul early in the fourth and Noel was able to capitalize.

After connecting on a three-pointer on her team's first possession, Noel struggled to get any good looks until Murarik fouled out. Noel scored six of her

team-high 14 points in the final quarter.

"She's used to getting more shots off and not having a girl on her the whole time like that," Glendale head coach John Matchock said of Noel. "When that happens, you just have to be patient and get your teammates to step up. Hopefully, they get you the ball when you have those open looks."

Noel's three-point play with 6:04 remaining made it a 40-33 game, but Cook and Rowley quickly gave Mo Valley a double-digit lead.

Cook laid the ball in on a fast-break, and Rowley followed with a steal on the inbounds play and put it up for another two points.

The Damsels' prowess on the glass proved to be a valuable asset, as they outrebounded Glendale 12-5 in the fourth and 42-20 in the contest.

"Luckily we've got girls like Taylor, Jordan and Shannon (Greslick), and Danielle (McQuown) off the bench, that can really hit the boards hard," said Mills. "When we hit the boards, get the ball to Rowley to push up the floor, that's when we get our offense really clicking. When we get outrebounded, that's when we're in trouble."

Glendale began the game red hot from the floor, but the Lady Vikings slowly lost their touch.

Noel's three-pointer gave Glendale a quick lead with 7:27 on the clock, but the Lady Viking junior was harassed by Murarik and didn't attempt another shot in the frame.

Brooke Legrand and Tiffany Twigg picked up the slack, however, as Glendale finished the first quarter 6-of-12 from the field and held a 15-11 advantage heading into the second.

Legrand, who finished with 11 points, knocked down two three-pointers, while Twigg put four points on the board.

"They did that the last time

against us and they had some success, so we thought they'd do it again," Matchock said of the box-and-one. "That's when the other girls have to step up. When Samantha is guarded like that, the other girls have to make the shots. Brooke did, Tiffany did, and they forced Mo Valley to go out of their box-and-one (in the second half)."

After making six shots in the opening quarter, Glendale combined to make eight shots from the field the rest of the way, and Mo Valley took advantage.

Kierstin Elder quickly vanquished the Glendale lead with a pair of three-pointers early in the second, while McQuown provided a spark of the bench to give Mo Valley a 23-21 lead.

The Lady Vikings took a 26-25 lead into halftime on a Whitney Strong foul shot, but the Damsels came out of the locker room and made it a moot point.

Mo Valley's defense forced four turnovers in the third and

held Glendale to 3-of-11 shooting, en route to outscoring the Lady Vikings 11-4 in the frame.

The Damsels, who got four points apiece from Elder and Greslick in the third, led 36-30 heading into the fourth.

Elder led all scorers with 16 points.

"It just seemed like Mo Valley was getting all these shots," Matchock said. "They were missing the first one, but got second and third and fourth (opportunities), and by then there's going to be a foul called somewhere. We were only getting one shot and we were out. Mo Valley did a good job of hitting the boards, and it led to the victory."

Mo Valley stayed in contention for the Moshannon Valley League title with the win, improving to 5-1 in league play. The Lady Vikings dropped to 2-5 in the league.

"We've stressed that (we're still in the running) all week long," said Mills. "The girls are excited about it, but we can't look past teams. Glendale's got a good team, and it's hard to play here — we always have a hard time here. The girls came out and got it done in the second half."

"I told the girls we couldn't be looking past them into next week. Sometimes we have a bad habit of doing that, and they caught us off-guard. Luckily, at the end, Rowley was able to attack the basket and get some open looks, and Kierstin had another good night shooting."

The win also guaranteed Mo Valley of its first non-losing sea-

son since 2001-02, as it improved to 12-6 on the season and 9-4 in the Juniata Valley League. Glendale dropped to 5-15 and 1-12 in the JVL.

Mo Valley is back in action Monday when it travels to Bellwood-Antis, while Glendale hosts Juniata Valley on Tuesday.

Moshannon Valley—49

Cook 3 0-0 6, Elder 5 3-5 16, Rowley 6 3-5 15, Murarik 1 0-0 2, Greslick 3 0-4 6, McQuown 2 0-0 4, Gallo 0 0-0 0, Dipko 0 0-0 0. Totals: 20 6-14 49.

Glendale—39

B. Dick 0 1-4 1, Legrand 4 0-0 11, Noel 5 3-7 14, Treese 1 1-2 3, Twigg 3 1-4 7, Strong 1 1-2 3. Totals: 14 7-19 39.

Three-pointers: Elder 3; Legrand 3, Noel.

Score by Quarters

Moshannon Valley	11	14	11	13—49
Glendale	15	11	4	9—39

January 29, 2007: Juniata Valley 44 at Glendale 34

FLINTON — The Glendale girls basketball team fell to Juniata Valley, 44-34, on Tuesday evening in Flinton.

The Lady Vikings (5-16) didn't have a player reach double digits, but got six points apiece from Morgan Biddle, Brianna Dick and Whitney Strong.

Glendale dropped to 1-13 in the Juniata Valley League and will host Williamsburg on Friday.

The Lady Vikings won the jayvee game, 36-22. Biddle led the way with 16 points, while Sara Tarr chipped in with 10.

Juniata Valley—44

McAllister 6 1-4 13, Morgan 2 0-2 6, Brennaman 1 0-0 2, Boyd 4 2-2 11, Stallman 1 0-2 3, Taylor 0 0-0 0, Briggs 4 1-3 9, Houck 0 0-0 0, Snyder 0 0-0 0. Totals: 18 4-13 44.

Glendale—34

Biddle 2 2-4 6, B. Dick 3 0-0 6, C. Dick 1 1-2 3, Me. Gates 0 0-0 0, Mi. Gates 0 0-0 0, Legrand 2 0-0 4, Noel 1 0-0 3, Strong 3 0-0 6, Tarr 0 0-0 0, Treese 1 0-2 2, Twigg 1 2-6 4, Wilson 0 0-0 0. Totals: 14 5-14 34.

Three-pointers: Morgan 2, Boyd, Stallman; Noel.

Score by Quarters

Juniata Valley	12	12	11	9—44
Glendale	8	12	6	8—34

February 2, 2008: Williamsburg 59 at Glendale 26

FLINTON — Williamsburg won its sixth game in a row and 13th out of its last 14 in beating Glendale, 59-26, in high school girls basketball Saturday afternoon.

Danielle Peck collected 21 points, 10 rebounds, six steals and five assists for the Lady Pirates, and Valerie Wyland contributed 11 points and nine rebounds.

Williamsburg improved its overall record to 18-3.

Brooke Legrand led Glendale with 10 points.

GLENDALE (26): Biddle 1 3-3 5, C. Dick 0 0-0 0, B. Dick 0 0-0 0, Me. Gates 0 0-0 0, Mi. Gates 0 0-0 0, Legrand 4 0-0 10, Noel 0 0-0 0, Strong 0 0-0 0, Tarr 0 0-0 0, Treese 1 1-4 3, Twigg 4 0-2 8. Totals — 10 4-9 26.

WILLIAMSBURG (59): Peck 7 3-6 21, Mingle 3 0-0 8, Wyland 4 3-3 11, Fay 1 0-0 3, Hileman 2 0-0 5, Becker 2 0-0 5, Saylor 0 0-0 0, Bookhammer 0 0-0 0, Everhart 3 0-0 6, Barroner 0 0-0 0, Emeigh 0 0-0 0, Luetgens 0 0-0 0. Totals — 22 6-9 59.

SCORE BY QUARTERS

Glendale	12	7	4	3 — 26
Williamsburg	12	14	19	14 — 59

3-point goals: Glendale 2 (Legrand 2); Williamsburg 9 (Peck 4, Mingle 2, Fay, Hileman, Becker).

Records: Glendale (5-17 overall; 1-6 in JVL second cycle); Williamsburg (18-3 overall; 7-1 in JVL second cycle).

JV: Williamsburg, 37-25. High scorers — Jordan Hileman, W, 11; Wilson, G, 8.

February 5, 2008: Mt. Union 52 at Glendale 61

FLINTON — The Glendale girls basketball team defeated Mount Union on Senior Night Tuesday, 61-52.



Morgan Biddle paced the Lady Vikings with 18 points, while Samantha Noel added 13. Katie Treese netted 11 points for the winners.

"We played really well tonight, and it was nice to get the win for the seniors," said Glendale head coach John Matchock. "I think the girls did a good job with Mount Union's zone defense. We were able to get three girls in double digits, which always helps."

Glendale improved to 6-17. The Lady Vikings wrap up their season on Thursday at Harmony.

There was no junior varsity game.

Mount Union—52

Kurtz 7 1-1 18, Atherton 0 4-4 4, Walters 8 1-2 17, Bookwalter 2 0-0 5, Woods 3 0-0 8, Turner 0 0-0 0. Totals: 20 6-7 52.

Glendale—61

Biddle 7 4-6 18, C. Dick 2 0-0 4, B. Dick 1 0-0 2, Legrand 3 0-0 9, Noel 4 2-2 13, Strong 0 0-0 0, Treese 5 0-3 11, Twigg 2 0-2 4. Totals: 24 6-13 61.

Three-pointers: Kurtz 3, Woods 2, Bookwalter; Legrand 3, Noel 3, Treese.

Score by Quarters

Mount Union	19	12	13	8—52
Glendale	14	20	11	16—61

February 7, 2008: Glendale 21 at Harmony 51

By Josh Mlot
Sports Writer

WESTOVER — One team was preparing to enter the playoffs, and the other was looking for a positive end to its season. When the Harmony and Glendale girls basketball teams met on Thursday night, it quickly became clear which team was which.

The Lady Owls opened up a 12-3 lead by the end of the first quarter and never looked back, en route to a 51-21 home victory to close out the regular season and clinch at least a tie for the Moshannon Valley League title.

"Every game you need to come out early and try to get on top," Glendale head coach John Matchock said. "Harmony did that to us tonight, and we couldn't answer it. We've been making strides all season, and just to have it end this way is a little heartbreaking. Harmony's a good team, but I at least thought we'd give them a little more of a battle than what we did."

Harmony held the Lady Vikings to only seven points in the first half, building a 23-point



E. Leyo

gap even when its shots weren't falling.

"Defensively I thought we did very well, holding them to seven points in the first half," Harmony head coach Chris Priester said. "Offensively we were going to the basket, and sometimes we got three or four shots. We didn't shoot real well tonight, but we stayed with it and usually got the attempt to go or got to the foul line."

Glendale did a better job of getting the ball inside in the second half, scoring its entire first half output in each of the last two quarters, but it was too late to salvage anything more than a moral victory.

"That's what we talked about in the locker room ... we needed to work the ball inside, which we did," Matchock said. "We got some points inside, picked up some fouls and got to the foul line. We just got ourselves in too big of a hole and it's real tough

to come back from that, especially against a team like Harmony. We played better the second half, and that's a plus."

The Lady Owls were led by Alyson Leyo, their only double-digit scorer, with 14 points, 10 rebounds and four blocks.

Glendale got its top contributions from Catie Dick and Tiffany Twigg, who both pitched in five points. Twigg also came up big on the boards, pulling down nine rebounds.

The game also marked the last time Harmony's seniors, Emily Leyo and Christine Harkleroad, will don the blue and gold in front of a home crowd.

"Christine and Emily have done a great job," Priester said. "I've had them all three years (I've been coach), and it's been great to coach them. I'm so proud of them and what they've done. Our first year we had six wins, and now we have 20 wins. They really came out and worked for it."

For the Lady Vikings, Twigg, Catie Dick and Katie Treese played for the last time in a Glendale uniform.

"The three seniors put in a lot of time over the summer, they don't miss practice and they set a good example," Matchock said. "They'll be missed. I just hope that next year, if kids come back, they'll realize you have to put time in. Basketball's not just a November through February sport, it's a year-round thing. If you want to get better you need to put time in, and we'll see what happens."

Alyson Leyo opened up the scoring for the Lady Owls at 6:18 of the first quarter, and Harmony went up 4-0 to start the game. Glendale jumped back into the thick of things when Catie Dick knocked down a three-pointer to pull within one. However, the Lady Vikings would not find the bottom of the bucket again until 5:05 of the second stanza.

By the time Samantha Noel hit that basket, Harmony was already on top 19-5.

Emily Leyo hit a free throw with 20 seconds remaining in the half to push the score to 30-7 going into the locker room.

Things looked a little different



Harkleroad

in the second half, as the Lady Vikings were more successful moving the ball and looking inside for the basket or a foul. When Morgan Biddle dropped

down a jump shot at 5:16 in the third, Glendale had already matched its entire first-half point production, making the score 36-14.

Offense was hard to come by in the following minutes, but with a minute left to play in the quarter Makenzie Kruike forced the issue for Harmony, stealing the ball and taking it down the court for the layup and a 42-14 advantage heading into the final period of play.

The Lady Vikings scored another seven in the last eight minutes, while allowing only nine, but the score still stood in Harmony's favor at the final buzzer, 51-21.

Glendale finished the season with an overall record of 6-18, going 2-6 in the MVL.

The Lady Owls end the regular season at 20-3 overall, while going 7-1 in league play. Harmony received a number five seed in the District 6 playoffs, and will take on 12th-seeded Conemaugh Valley on Monday at Richland High School. Tip-off is at 6 p.m.

"We need to do some of the same things defensively that I thought we did well (tonight), and what we did on the boards," Priester said. "I told them before the game that we need to carry (those things) over into the playoffs."

Glendale—21

Legrand 1 0-1 3, Treese 0 0-0 0, Noel 1 0-0 2, C. Dick 2 0-0 5, Twigg 2 1-2 5, Ml. Gates 0 0-0 0, Biddle 2 0-0 4, Strong 0 0-2 0, B. Dick 0 0-0 0, Tarr 0 2-2 2, Me. Gates 0 0-0 0, Wilson 0 0-3 0. Totals: 8 3-10 21.

Harmony—51

A. Leyo 5 3-4 14, Brink 1 4-5 6, K. Kruike 2 0-1 4, E. Leyo 1 4-8 6, Harkleroad 1 0-1 2, M. Kruike 3 1-5 7, Neff 4 0-0 8, Clark 1 0-0 2, Westover 1 0-0 2. Totals: 19 12-24 51.

Three-pointers: Legrand, C. Dick; A. Leyo.

Score by Quarters

Glendale	3	4	7	7-21
Harmony	12	18	12	9-51

2007-08 Progressland Girls Basketball Honor Roll

All-Stars

First Team

Megan Brink	Harmony	Junior
Jordan Cook	Moshannon Valley	Senior
Taylor Harpster	Philipsburg-Osceola	Sophomore
Heather Hudson	Purchase Line	Senior
Kari Larson	West Branch	Senior
Alyson Leyo	Harmony	Sophomore

Second Team

Alexis Cartwright	Philipsburg-Osceola	Senior
Kierstin Elder	Moshannon Valley	Junior
Holly Fink	Curwensville	Senior
Rebecca Kephart	West Branch	Sophomore
Samantha Noel	Glendale	Junior
Jayme Ryan	Clearfield	Sophomore

Honorable Mention

Annie Janocko	Clearfield	Junior
Kierstyn Kruike	Harmony	Junior
Lindsay Neff	Harmony	Sophomore
Brianna Parks	West Branch	Senior
Vanessa Rowley	Moshannon Valley	Sophomore
Tiffany Twigg	Glendale	Senior
Hannah Walls	Curwensville	Junior
Jolene Wesesky	West Branch	Senior
Megan Yonushonis	Philipsburg-Osceola	Sophomore

Player of the Year

Alyson Leyo, Harmony

Coach of the Year

Aaron Millis, Moshannon Valley

Moshannon Valley League

Team	W-L
Harmony	7-1
Moshannon Valley	7-1
West Branch	4-4
Glendale	2-6
Curwensville	0-8

Mo Valley League all-stars announced

LUMBER CITY — The Moshannon Valley League held its annual banquet on Tuesday evening at the Eagles Ridge Golf Club to honor its all-stars.

Harmony and Moshannon Valley were honored as the girls' league co-champions, while Harmony's boys were honored as the boys champions.

First-team honors for the girls went to Moshannon Valley's Jordan Cook and Kierstin Elder, West Branch's Kari Larson, Harmony's Alyson Leyo and Glendale's Samantha Noel.

Honorable mentions went to Harmony's Megan Brink and Kierstyn Kruike, and West Branch's Rebecca Kephart and Jolene Wesesky.

For the boys, the first-team consisted of West Branch's Chris Dotts and Tyler Ferguson, Curwensville's David Kalgren, Harmony's Cody Rydbom and Glendale's Sam Yingling.

Honorable Mentions went to Glendale's Brock Kauffman, Moshannon Valley's Tom Rowley and Harmony's Jeremy Priester and Joey Schneider.

2007-08 Progressland Girls Basketball Final Statistical Leaders

Individual Scoring (20 GP minimum)					Team Statistics Scoring Offense			Team Statistics Scoring Defense					
Player	FG	FTM	3s	Pts.	Avg.	Team	GP	Pts.	Avg.	Team	GP	Pts.	Avg.
A. Leyo (H)	162	102	13	439	18.3	Harmony	24	1349	56.2	Harmony	24	1036	43.1
K. Larson (WB)	148	78	5	379	15.2	West Branch	25	1253	50.1	Mo Valley	23	1059	46.0
T. Harpster (PO)	118	61	23	320	13.9	Mo Valley	23	1033	44.9	West Branch	25	1223	48.9
Hudson (PL)	112	55	20	299	13.0	P-O	24	1019	42.5	Glendale	24	1204	50.2
Brink (G)	98	82	17	295	12.3	Clearfield	24	1018	42.4	Purchase Line	23	896	39.0
Noel (G)	83	39	53	258	10.8	Glendale	24	942	39.3	Curwensville	23	714	31.0
Kephart (WB)	92	70	1	255	10.2	Clearfield	24	1018	42.4	Clearfield	24	1018	42.4
Cook (MV)	78	61	4	221	10.0	Glendale	24	942	39.3	Glendale	24	942	39.3
Elder (MV)	67	45	49	228	9.9	Purchase Line	23	896	39.0	Purchase Line	23	896	39.0
Cartwright (PO)	65	62	19	211	9.2	Curwensville	23	714	31.0	Curwensville	23	714	31.0
Ryan (CI)	65	31	45	206	9.0	Curwensville	23	714	31.0	Curwensville	23	714	31.0

Individual Scoring (20 GP minimum)					Team Statistics Scoring Defense		
Player	GP	Pts.	Avg.	Team	GP	Pts.	Avg.
Cook (MV)	22	205	9.3	Clearfield	24	1234	51.4
Fink (Cu)	23	199	8.6	Purchase Line	23	1289	56.0
T. Harpster (PO)	23	195	8.5	P-O	24	1520	63.3
Murarik (MV)	22	163	7.4				
Neff (H)	24	169	7.0				
Byerly (CI)	24	168	7.0				
Yonushonis (PO)	23	153	6.6				
K. Larson (WB)	25	160	6.4				

Free Throw Percentage (50 attempts minimum)					Team Statistics Scoring Defense		
Player	FTM	FTA	FT%	Team	GP	Pts.	Avg.
Bloom (Cu)	78	103	75.7	Clearfield	24	99	4.1
Janocko (CI)	45	61	73.8	Glendale	24	93	3.9
T. Harpster (PO)	61	86	70.9	Mo Valley	23	81	3.5
Noel (G)	39	56	69.6	West Branch	25	63	2.5
Cartwright (PO)	62	92	67.4	P-O	24	59	2.5
Cook (MV)	61	91	67.0	Harmony	24	55	2.2
Brink (H)	82	124	66.1	Purchase Line	23	25	1.1
Hudson (PL)	55	87	63.2	Curwensville	23	19	0.8
Wesesky (WB)	33	53	62.3				
A. Leyo (H)	102	164	62.2				
Neff (H)	42	68	61.8				
Elder (MV)	45	76	59.2				

Rebounds Per Game (20 GP minimum)				Rebounds Per Game			
Player	GP	Reb	RPG	Team	GP	Reb	RPG
A. Leyo (H)	24	340	14.2	Mo Valley	23	955	41.5
Kephart (WB)	25	234	9.4	West Branch	25	1038	41.5

Free Throw Percentage (50 attempts minimum)				Rebounds Per Game			
Player	FTM	FTA	FT%	Team	GP	Reb	RPG
Bloom (Cu)	78	103	75.7	Harmony	24	897	37.4
Janocko (CI)	45	61	73.8	Clearfield	24	768	32.0
T. Harpster (PO)	61	86	70.9	Glendale	24	750	31.3
Noel (G)	39	56	69.6	Purchase Line	23	641	27.9
Cartwright (PO)	62	92	67.4	P-O	23	566	24.6
Cook (MV)	61	91	67.0				
Brink (H)	82	124	66.1				
Hudson (PL)	55	87	63.2				
Wesesky (WB)	33	53	62.3				
A. Leyo (H)	102	164	62.2				
Neff (H)	42	68	61.8				
Elder (MV)	45	76	59.2				

Note: Team rebounding totals for Curwensville were not available.

Players	Points	Three's
Samantha Noel	258	53
Brooke Legrand	106	13
Katie Treese	102	7
Morgan Biddle	96	0
Brianna Dick	85	10
Tiffany Twigg	85	0
Whitney Strong	81	0
Catie Dick	52	6
Sara Tarr	30	0
Brooke Wilson	29	4
Meagan Gates	11	0
Michelle Gates	9	0
Totals	944	93