

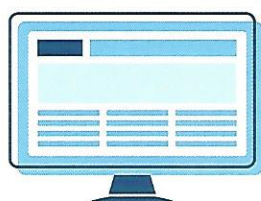
# How is CTE Diagnosed?

Currently, CTE can only be diagnosed after death. To diagnose CTE, doctors check the brain for changes that happen to people with CTE. Through this process, doctors confirm whether the person had CTE or another disease, such as Alzheimer's disease.<sup>7</sup>



## National Institutes of Health (NIH) Study is Looking for Answers on CTE

NIH funded a large research study to learn how to diagnose CTE while a person is alive. Developing ways to diagnose CTE during life will help researchers learn more about the disease. It may also lead to treatments for CTE in the future.<sup>8</sup>



### Resources:

#### To learn more about CTE and other brain diseases:

- Visit <https://www.ninds.nih.gov/Current-Research/Focus-Research/Focus-Traumatic-Brain-Injury>.

#### If you or someone you know needs to speak with a trained counselor:

- Contact the National Suicide Prevention Lifeline at **1-800-273-TALK (1-800-273-8255)**, or
- Visit <https://suicidepreventionlifeline.org>.



#### The Veterans Crisis Line connects veterans, their family, or friends with qualified caring responders:

- Call confidential toll-free hotline at **1-800-273-8255**, or
- Text to **838255**.

### References:

1. McKee A, Stern RA, Nowinski C, et al. The spectrum of disease in chronic traumatic encephalopathy. *Brain*. 2013;136(pt 1):43-64. doi:10.1093/brain/aww307
2. Stein TD, Alvarez VE, McKee AC. Concussion in chronic traumatic encephalopathy. *Curr Pain Headache Rep*. 2015;19(10):47. doi:10.1007/s11916-015-0522-z
3. McKee AC, Alosco ML, Huber BR. Repetitive head impacts and chronic traumatic encephalopathy. *Neurosurg Clin N Am*. 2016;27(4):529-535. doi:10.1016/j.nec.2016.05.009
4. Stern RA, Daneshvar DH, Baugh CM, et al. Clinical presentation of chronic traumatic encephalopathy. *Neurology*. 2013;81(13):1122-1129. doi:10.1212/WNL.0b013e3182a55f7f
5. Mez J, Daneshvar DH, Kiernan PT, et al. Clinicopathological evaluation of chronic traumatic encephalopathy in players of American football. *JAMA*. 2017;318(4):360-370. doi:10.1001/jama.2017.8334
6. Iverson GL. Chronic traumatic encephalopathy and risk of suicide in former athletes. *Br J Sports Med*. 2014;48(2):162-164. doi:10.1136/bjsports-2013-092935
7. McKee AC, Cairns NJ, Dickson DW, et al. The first NINDS/NIBIB consensus meeting to define neuropathological criteria for the diagnosis of chronic traumatic encephalopathy. *Acta Neuropathol*. 2016;131:75-86. doi:10.1007/s00401-015-1515-z
8. Asken BM, Sullan MJ, DeKosky ST, Jaffee MS, Bauer RM. Research gaps and controversies in chronic traumatic encephalopathy: a review. *JAMA Neurol*. 2017;74(10):1255-1262. doi:10.1001/jamaneurol.2017.2396