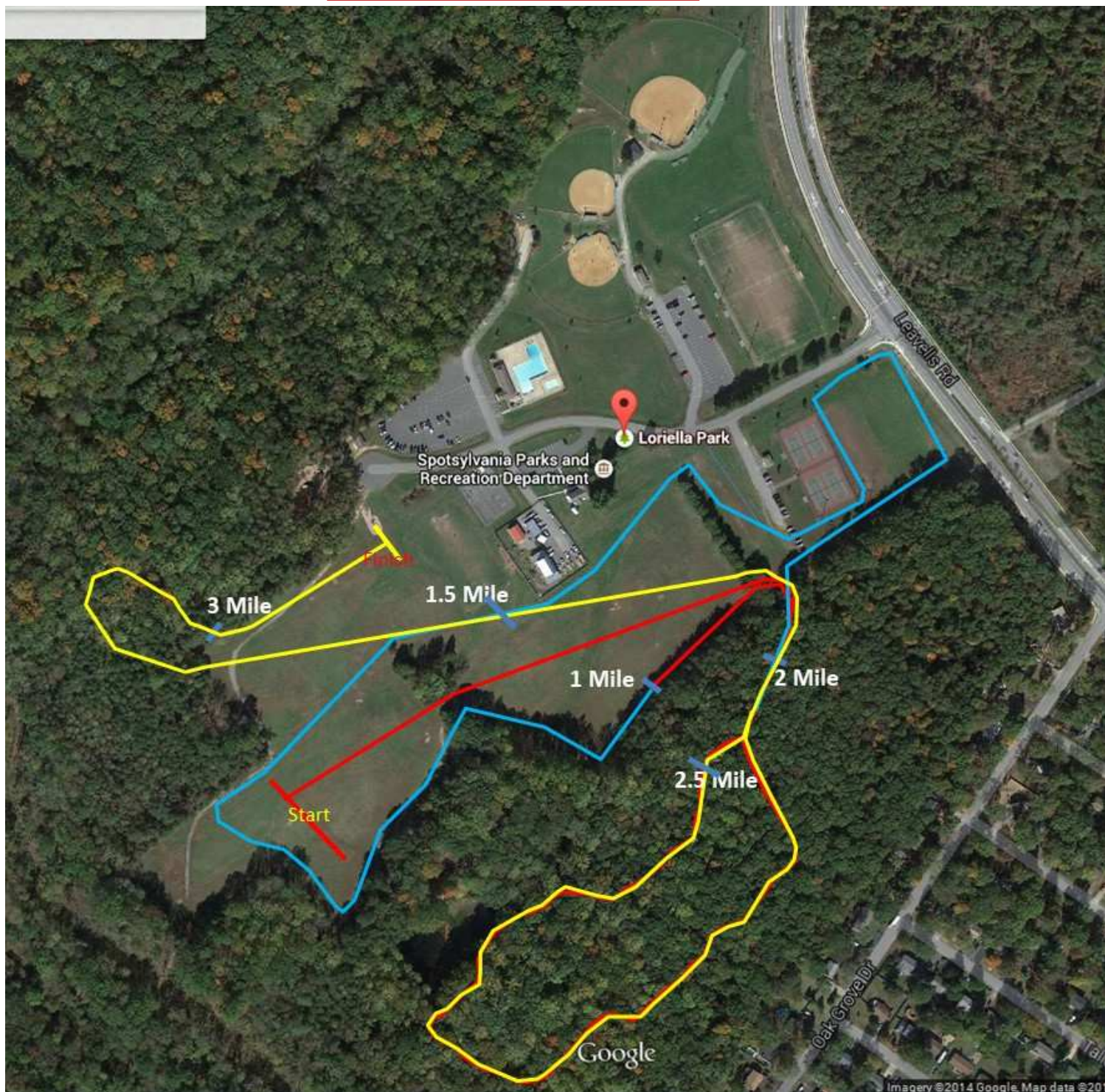


Loriella Park 5K Course



RED - Start is in the "Bowl" near previous year Start. Proceed direct to tree line to pass through at the second opening to the right side of the Frisbee 'Tees ' Proceed to the 'Big Loop" passing through the tree line between the 2nd & 3rd trees from the right as scene by the runner. Bear to the LEFT in the Big Loop and run it clockwise (LEFT at the fork). Come out of the ' Big Loop" and turn left and proceed on course to 1 Mile Mark just prior to next turn.

BLUE - Proceed on marked course and pass wide through Tree Line at first opening. Continue on marked course. The runner will pass through course stakes and flags. Continue on course and turn left into the "Big Loop" once again staying to the LEFT and running the Big Loop Clockwise (LEFT at the fork). 2 Mile Mark is half way from splint to entrance to "Big Loop."

YELLOW -- On exiting continue straight ahead to go around the frisbee tee to pass through the Tree Line at the third opening then straight to the "Cemetery Hill" entrance Loop. Mile 3 is at the exit of Cemetery Hill. Finish as in previous year.