



# Sanger High Apaches

**1 State Championship  
8 Valley Championships  
29 League Championships**



**1968**

**Valley Champion**  
Sequoia Division  
Valley #2



**1976**

**Valley Champion**  
Yosemite Division  
Valley #1  
State AAA #1  
State D2 Team of the Year



**2016**

**Valley Champion**  
Division 2  
Valley #3  
State D2 #9  
NorCal D2A Runner-up



## All-Time Games Records

### All Games Played

Team	1st Season	1st Time Played	Total Games Played	Overall W-L-T	Last Time Played-Won
Arroyo Grande Eagles	1897	2018	1	0-1-0	'18-x
Arvin Bears	1949	1976	1	1-0-0	'76-'76
Atascadero Greyhounds	1921	2008	1	0-1-0	'08-x
Bakersfield Drillers	1897	1975	3	1-2-0	'05-'75
Buchanan Bears	1991	1994	12	4-8-0	'09-'06
Bullard Knights	1956	1967	43	18-25-0	'22-'22
Caruthers Blue Raiders	1922	1960	1	0-1-0	'60-x
Centennial (Bkfd) Golden Hawks	1993	1997	7	2-5-0	'22-'03
Central Grizzlies	1930	1960	12	8-4-0	'05-'05
Central Valley Christian Cavaliers	1982	2022	1	0-1-0	'22-x
Chowchilla Tribe (Redskins)	1920	1957	5	4-1-0	'70-'70
Clovis Cougars	1922	1930	65	24-39-2	'22-'08
Clovis East Timberwolves	2001	2002	14	7-7-0	'22-'21
Clovis North Broncos	2009	2009	1	1-0-0	'09-'09
Clovis West Golden Eagles	1978	1981	20	2-17-1	'06-'96
Coalinga Horned Toads	1935	1951	2	2-0-0	'68-'68
Corcoran Panthers	1914	1956	9	8-1-0	'70-'70
Dinuba Emperors	1900	1902	16	10-5-1	'19-'16
Dos Palos Broncos	1923	1947	7	5-2-0	'54-'54
East (Bkfd) Blades	1938	1998	3	3-0-0	'01-'01
Edison (& Tech) Tigers	1926	1930	44	27-17-0	'22-'22
El Diamante (Vis) Miners	2004	2013	1	0-1-0	'13-x
Exeter Monarchs	1909	1915	9	8-1-0	'64-'64
Foothill (Bkfd) Trojans	1962	1976	1	1-0-0	'76-'76
Fowler Redcats	1903	1903	39	21-16-2	'64-'64
Fresno Warriors	1892	1908	41	24-17-0	'17-'17
Fresno Tech Wolves	1921	1921	14	5-8-1	'38-'26
Frontier (Bkfd) Titans	2007	2021	1	0-1-0	'21-x
Garces Memorial (Bkfd) Rams	1947	1968	3	2-1-0	'15-'15
Golden West (Vis) Trail Blazers	1980	1996	7	3-4-0	'03-'03
Hanford Bullpups	1899	1920	26	14-10-2	'19-'18
Hanford West Huskies	1998	2002	2	2-0-0	'03-'03
Highland (Bkfd) Scots	1970	1980	1	1-0-0	'80-'80
Hoover Patriots	1963	1971	43	30-11-2	'15-'15
Justin Garza Guardians	2021	2022	1	1-0-0	'22-'22
Kingsburg Vikings	1922	1927	32	13-16-3	'21S-'65
Lemoore Tigers	1908	1924	69	34-32-3	'22-'19
Liberty (Bkfd) Patriots	1999	2004	2	1-1-0	'05-'05
Madera Coyotes	1903	1906	40	26-12-2	'22-'22
Madera South Stallions	2007	2012	8	8-0-0	'19-'19
McLane Highlanders	1959	1976	20	12-8-0	'07-'07
Monache (Ptv) Marauders	1969	1977	2	2-0-0	'78-'78
Mt. Whitney (Vis) Pioneers	1952	1969	20	12-8-0	'13-'13
North (Bkfd) Stars	1953	2002	2	2-0-0	'08-'08
Orosi Cardinals	1914	1923	1	1-0-0	'23-'23
Parlier Panthers	1922	1924	3	3-0-0	'29-'29
Paso Robles Bearcats	1919	2018	3	3-0-0	'22-'22
Porterville Panthers	1897	1951	4	3-1-0	'05-'05
Pre-1931 'Local' Teams	x	1900	24	9-11-4	'29-'27
Redwood (Vis) Rangers	1954	1971	20	14-6-0	'15-'15
Reedley Pirates	1912	1915	106	71-33-2	'19-'19
Ridgeview Wolf Pack	1995	2014	2	1-1-0	'14-'16
Robert F Kennedy Thunderbirds	2009	2021	1	1-0-0	'21-'21
Roosevelt Roughriders	1929	1929	31	13-18-0	'21-'21
San Joaquin Memorial Panthers	1945	1949	23	13-10-0	'22-'21S
Sanger West Hornets	2022	2022	1	1-0-0	'22-'22
Selma Bears	1894	1900	74	39-32-3	'01-'01
Serra Padres (San Mateo)	1946	2016	1	0-1-0	'16-x
Shafter Generals	1930	1954	5	1-3-1	'64-'56
Sierra Chieftains	1934	1967	2	2-0-0	'68-'68
South (Bkfd) Spartans (Rebels)	1957	1998	1	1-0-0	'98-'98
Sunnyside Wildcats	2000	2000	16	15-1-0	'16-'16
Taft Wildcats	1921	1925	1	1-0-0	'25-'25
Tulare Union Tribe (Redskins)	1896	1953	20	11-8-1	'09-'97
Tulare Western Mustangs	1961	1965	6	5-0-1	'70-'70
Wasco Tigers	1933	1952	3	1-2-0	'62-'61
Washington Union Panthers	1922	1930	20	14-4-2	'21-'69
West (Bkfd) Vikings	1965	2009	2	2-0-0	'12-'12
Woodlake Tigers	1916	1949	1	1-0-0	'49-'49

All Teams 1024 Games – 575-416-33

### State Playoff Record

Team	W-L	Division 2A
Serra Padres	0-1	State North Regional Championship Bowl

### Valley Playoff Records

Team	W-L	Team	W-L
Arroyo Grande Eagles	0-1	Garces Memorial Rams	2-1
Arvin Bears	1-0	Golden West Trail Blazers	0-1
Bakersfield Drillers	1-2	Lemoore Tigers	0-3
Buchanan Bears	1-1	McLane Highlanders	1-0
Bullard Knights	0-1	North Stars	2-0
Centennial Golden Hawks	2-4	Paso Robles Bearcats	1-0
Central Grizzlies	1-0	Redwood Rangers	3-1
Central Valley Christian Cavaliers	0-1	Reedley Pirate	2-0
Clovis West Golden Eagles	0-1	Ridgeview Wolf Pack	1-1
Coalinga Horned Toads	2-0	San Joaquin Memorial Panthers	1-0
Corcoran Panthers	1-0	Selma Bears	0-1
Dinuba Emperors	1-1	Shafter Generals	0-1
East Blades	3-0	South Spartans (Rebels)	1-0
Edison Tigers	2-1	Sunnyside Wildcats	2-0
El Diamante Miners	0-1	Tulare Union Tribe (Redskins)	1-3
Foothill Trojans	1-0	Wasco Tigers	0-1
Fresno Warriors	0-4	West Vikings	2-0
Frontier Titans	0-1		

All Teams 67 Playoff Games – 34-33

### Most Wins Single Season

2016 13-1	2003 11-2	1975 10-2	2015 10-2
1976 12-1	1998 11-2	2002 10-2	2001 10-3
1968 11-1		2005 10-2	2012 10-3

League & Valley Champion Valley Champion League Champion

### Most Wins in a Decade

82 – 2000-09	67 – 1950-59	63 – 2060-69
80 – 2010-19	64 – 1990-99	62 – 1970-79

### Most Consecutive Wins

13 – 2016
12 – 1976
12 – 1958-1959

### Most Consecutive Wins/Ties

18 – 1968-1969 (1 Tie)
18 – 1976-1977 (2 Ties)

### Most Consecutive Regular Season Wins (without Playoffs)

22 – 1951-1953	12 – 1958-1959	16 – 1967-1969 (1 Tie)
21 – 2015-2017	10 – 1932-1933	15 – 1976-1977 (2 Ties)
14 – 1954-1956		

### Most Consecutive League Wins

15 – 1950-1953 North Sequoia League

### Longest Winning Streak vs 1 Team

16 games versus Selma 1968-2000

### Longest Losing Streak vs 1 Team

17 games versus Clovis 1984-2004

### Milestone Wins

#550 36 - 33	versus Madera	Jorge Peña	2018
#500 49 - 6	versus Hoover	Chuck Shidan	2013
#450 45 - 14	versus Reedley	Chuck Shidan	2005
#400 21 - 14	versus Sunnyside	Chuck Shidan	2000
#350 23 - 13	versus Madera	Chuck Shidan	1992
#300 21 - 17	versus Central	Fred Ratzlaff	1980
#250 7 - 0	versus Bullard	Buck Martin	1972
#200 13 - 0	versus Reedley	J.R. Boone	1964
#150 20 - 0	versus Edison	Ray Newman	1956
#100 41 - 6	versus SJ Memorial	Clare Slaughter	1949
# 50 14 - 13	versus Selma	Huntley Dayton	1932
# 1 11 - 6	versus Mill Team	unknown	1901



## Championships

### 1 State North Regional Championship Bowl Runner-up

Year	Score	Team	Coach	State Division
2016	36 – 49	Serra (San Mateo)	Chuck Shidan	Division 2A

### 8 Valley (Central Section) Championships

Year	Score	Team	Coach	Division
2016	20 – 10	Ridgeview	Chuck Shidan	Division 2
2003	23 – 7	Centennial (Bkfd)	Chuck Shidan	Yosemite-Small Schools
2001	20 – 3	@ Centennial (Bkfd)	Chuck Shidan	Yosemite-Small Schools
1998	35 – 28	@ Edison	Chuck Shidan	Yosemite-Small Schools
1976	21 – 0	# Foothill (Bkfd)	Gary Scott	Yosemite
1968	13 – 0	Garces Memorial (Bkfd)	John Perkins	Sequoia
1956	40 – 6	Corcoran	Ray Newman	Sequoia
1951	26 – 20	@ Coalinga	Clare Slaughter	Sequoia

(#all playoff games at Lamonica Stadium Clovis as CIF directed "neutral site")

### 5 Valley (Central Section) Runners-up

Year	Score	Team	Coach	Division
2012	24 – 49	@ Garces Memorial (Bkfd)	Chuck Shidan	Division 2
2008*	20 – 35	@ Tulare Union	Chuck Shidan	Division 2
1999*	34 – 45	Tulare Union	Chuck Shidan	Yosemite-Small Schools
1955	13 – 25	@ Shafter	Ray Newman	Sequoia
1952	13 – 14	Wasco	Clare Slaughter	Sequoia

### 29 League Championships

- (7) County-Metro Athletic Conference (CMAC) 2021S, 2016, 2015, 2014  
2012, 2006, 2004
- (5) West Yosemite League (WYL) 2003, 2002, 1976, 1975, 1971
- (1) North Yosemite League (NYL) 1982
- (1) East Sequoia League (ESL) 1968
- (4) Central Sequoia League (CSL) 1963, 1961, 1960, 1959
- (4) North Sequoia League (NSL) 1956, 1955, 1952, 1951
- (1) Sequoia League 1944
- (4) Fresno County League (Division 2) 1935, 1933, 1932, 1924
- (1) San Joaquin Valley League (Division 2) 1934
- (1) Fresno County League 1909

### Most Consecutive League Championships

- 4 – 1932, 1933, 1934 & 1935 Huntley Dayton
- 3 – 1959, 1960 & 1961 J.R. Boone  
2002, 2003 & 2004 Chuck Shidan  
2014, 2015 & 2016 Chuck Shidan
- 2 – 1951 & 1952 Claire Slaughter  
1955 & 1956 Ray Newman  
1975 & 1976 Gary Scott

### State Team of the Year (CalHi Sports)

Year	Record	Coach	State Division
1976	12 – 1	Gary Scott	2

\*5 Divisions: D1 largest schools

### Highest Final State Rankings (CalHi Sports)

Year	Record	Coach	State Rank/Division
1976	12 – 1	Gary Scott	# 1 AAA
*5 Divisions: AAAA largest schools			
2016	13 – 1	Chuck Shidan	# 9 2
2003	11 – 2	Chuck Shidan	# 9 2
2001	10 – 3	Chuck Shidan	#10 2
2015	10 – 2	Chuck Shidan	Hon 2
2021S	4 – 1	Jorge Peña	Hon 2

\*5 Divisions: D1 largest schools / Hon =Honorable Mention

### Highest Final Valley Rankings

Year	Record	Coach	Valley Rank
1976	12 – 1	Gary Scott	# 1
1968	11 – 1	John Perkins	# 2
2016	13 – 1	Chuck Shidan	# 3
2003	11 – 2	Chuck Shidan	# 3
2021	4 – 1	Jorge Peña	# 7
2001	10 – 3	Chuck Shidan	#10

### Championship Season Statistics

Year	Games	Record	Total Points		Avg Points		Avg Point Difference	Shutouts
			Scored	Allowed	Scored	Allowed		
2021S	5	4-1-0	117	46	23.4	9.2	14.2	1
2016	14	13-1-0	578	222	41.3	15.9	25.4	1
2015	12	10-2-0	321	147	26.8	12.3	14.5	0
2014	12	8-4-0	373	211	31.1	17.6	13.5	2
2012	13	10-3-0	368	253	30.7	21.1	9.6	2
2006	12	8-4-0	327	241	27.3	20.1	7.2	0
2004	11	6-5-0	251	200	22.8	18.2	4.6	1
2003	13	11-2-0	426	211	32.8	16.2	16.5	0
2002	12	10-2-0	320	175	26.7	14.6	12.1	2
2001*	13	10-3-0	334	227	25.7	17.5	8.2	0
1998*	13	11-2-0	496	247	38.2	19.0	19.2	1
1982	11	8-2-1	193	140	17.5	12.7	4.8	3
1976	13	12-1-0	333	92	25.6	7.1	18.5	3
1975	12	10-2-0	171	92	14.3	7.7	6.6	5
1971	10	6-4-0	184	140	18.4	14.0	4.4	3
1968	12	11-1-0	268	50	22.3	4.2	18.2	5
1963	9	6-3-0	233	130	25.9	14.4	11.4	1
1961	9	8-1-0	208	82	23.1	9.1	14.0	1
1960	9	7-2-0	187	44	20.8	4.9	15.9	3
1959	8	8-0-0	259	81	32.4	10.1	22.3	3
1956	10	9-1-0	285	167	28.5	16.7	11.8	2
1955	9	8-1-0	162	85	18.0	9.4	8.6	1
1952	10	9-1-0	254	89	25.4	8.9	16.5	2
1951	10	8-2-0	216	96	21.6	9.6	12.0	3
1944	6	6-0-0	117	37	19.5	6.2	13.3	3
1935	7	4-2-1	67	57	9.6	8.1	1.4	3
1934	7	5-2-0	118	46	16.9	6.6	10.3	4
1933	5	4-1-0	54	32	10.8	6.4	4.4	2
1932	7	6-1-0	70	37	11.7	6.2	5.5	3
1924	8	5-2-1	67	70	8.4	8.8	- 0.4	3
1909	4	2-1-1	25	19	6.3	4.8	1.5	3

### San Joaquin Valley Championship Leagues/Divisions

2008 – present	Division 1	n/a
1996 – 2007	Yosemite Division Large Schools	n/a
1951 – 1995	Yosemite Division	1976
1900 – 1950	Large Schools	n/a

### San Joaquin Valley/Central Section Championship Divisions

2008 – present	Division 1,2,3,4,5 & 6	D2 '16
1996 – 2007	Yosemite Large & Small, Sequoia, Sierra & Small	Yos Sm '98,'01,'03
1956 – 1995	Yosemite, Sequoia & Sierra	Yos '76 & Seq '68
1951 – 1956	Yosemite, Sequoia & Sierra/Shasta	Sequoia '51,'56
1931 – 1950	Large & Small Schools	n/a
1900 – 1930	Large Schools	n/a

Statistics are based on available game & season records.  
Information for some years is incomplete or unavailable.



**Valley/Central Section Playoff History**

<u>Year</u>	<u>Versus</u>	<u>Score</u>	<u>Result</u>	<u>Coach</u>	<u>Season Record</u>
2022*	CV Christian Paso Robles	0-20 21-0	Lose Quarterfinal – Division 2 Win Round 1	Matt Logue	6-6
2021*	Frontier	7-24	Lose Round 1 – Division 2	Jorge Peña	7-4
2021	Spring		No Valley Playoffs - Covid 19 Pandemic	Jorge Peña	4-1
2019*	Dinuba	14-28	Lose Round 1 – Division 2	Jorge Peña	7-4
2018*	Arroyo Grande	10-59	Lose Round 1 – Division 1	Jorge Peña	7-4
2017*	Bullard	14-21	Lose Quarterfinal – Division 1	Jorge Peña	8-3
<b>2016</b>	<b>Ridgeview</b> Sunnyside Dinuba	<b>20-10</b> 56-9 42-6	<b>Win Valley Championship – Division 2</b> Win Semi-Final Win Quarterfinal	<b>Chuck Shidan</b>	<b>13-1</b>
2015	Lemoore Garces Memorial	5-13 13-10	Lose Semi-Final – Division 2 Win Quarterfinal	Chuck Shidan	10-2
2014	Ridgeview SJ Memorial	23-30 49-26	Lose Semi-Final – Division 2 Win Quarterfinal	Chuck Shidan	8-4
2013*	El Diamante Redwood	17-21 7-0	Lose Semi-Final – Division 2 Win Quarterfinal	Chuck Shidan	8-4
2012	Garces Memorial West Redwood	24-49 41-7 17-14	Lose Valley Championship – Division 2 Win Semi-Final Win Quarterfinal	Chuck Shidan	10-3
2011*	Redwood	2OT 41-42	Lose Round 1 – Division 2	Chuck Shidan	4-7
2010*	Lemoore	22-23	Lose Round 1 – Division 2	Chuck Shidan	5-6
2009*	Tulare Union West	12-55 20-3	Lose Quarterfinal – Division 2 Win Round 1	Chuck Shidan	6-6
2008*	Tulare Union North Sunnyside	20-38 40-21 47-19	Lose Semi-Final – Division 2 Win Quarterfinal Win Round 1	Chuck Shidan	7-6
2007*	Buchanan	7-29	Lose Round 1 – Yosemite/Large Schools Division	Chuck Shidan	7-4
2006	Clovis West Buchanan	7-35 3OT 35-34	Lose Quarterfinal – Yosemite/Large Schools Division Win Round 1	Chuck Shidan	8-4
2005*	Bakersfield Central	22-34 29-0	Lose Quarterfinal – Yosemite/Large Schools Division Win Round 1	Chuck Shidan	10-2
2004	Centennial	14-17	Lose Round 1 – Yosemite/Large Schools Division	Chuck Shidan	6-5
<b>2003</b>	<b>Centennial</b> Redwood Reedley	<b>23-7</b> OT 26-21 35-3	<b>Win Valley Championship – Yosemite/Small Schools Division</b> Win Semi-Final Win Quarterfinal	<b>Chuck Shidan</b>	<b>11-2</b>
2002	Centennial North	OT 20-21 21-9	Lose Semi-Final – Yosemite/Small Schools Division Win Quarterfinal	Chuck Shidan	10-2



<u>Year</u>	<u>Versus</u>	<u>Score</u>	<u>Result</u>	<u>Coach</u>	<u>Season Record</u>
<b>2001*</b>	<b>Centennial</b>	<b>20-3</b>	<b>Win Valley Championship – Yosemite/Small Schools Division</b>	<b>Chuck Shidan</b>	<b>10-3</b>
	Edison	26-25	Win Semi-Final		
	East	28-7	Win Quarterfinal		
<b>2000*</b>	<b>Centennial</b>	<b>6-9</b>	<b>Lose Quarterfinal – Yosemite/Small Schools Division</b>	<b>Chuck Shidan</b>	<b>7-4</b>
<b>1999*</b>	<b>Tulare Union</b>	<b>35-45</b>	<b>Lose Valley Championship – Yosemite/Small Schools Division</b>	<b>Chuck Shidan</b>	<b>9-4</b>
	East	47-17	Win Semi-Final		
	Reedley	44-13	Win Quarterfinal		
<b>1998*</b>	<b>Edison</b>	<b>35-28</b>	<b>Win Valley Championship – Yosemite/Small Schools Division</b>	<b>Chuck Shidan</b>	<b>11-2</b>
	East	52-21	Win Semi-Final		
	South	35-10	Win Quarterfinal		
<b>1997*</b>	<b>Centennial</b>	<b>9-16</b>	<b>Lose Semi-Final – Yosemite/Small Schools Division</b>	<b>Chuck Shidan</b>	<b>8-4</b>
	Tulare Union	35-33	Win Quarterfinal		
<b>1996*</b>	<b>Golden West</b>	<b>12-13</b>	<b>Lose Quarterfinal – Yosemite/Small Schools Division</b>	<b>Chuck Shidan</b>	<b>7-4</b>
<b>1982</b>	<b>Bakersfield</b>	<b>13-41</b>	<b>Lose Quarterfinal – Yosemite Division</b>	<b>Roy Tanimoto</b>	<b>8-2-1</b>
<b>1976</b>	<b>Foothill</b>	<b>21-0</b>	<b>Win Valley Championship – Yosemite Division</b>	<b>Gary Scott</b>	<b>12-1</b>
	McLane	7-6	Win Semi-Final		
	Arvin	32-6	Win Quarterfinal		
<b>1975</b>	<b>Edison</b>	<b>3-13</b>	<b>Lose Semi-Final – Yosemite Division</b>	<b>Gary Scott</b>	<b>10-2</b>
	Bakersfield	17-0	Win Quarterfinal		
<b>1971</b>			<i>Did not qualify for Valley Playoffs</i>	<i>Buck Martin</i>	<i>6-4</i>
<b>1968</b>	<b>Garces Memorial</b>	<b>13-0</b>	<b>Win Valley Championship – Sequoia Division</b>	<b>John Perkins</b>	<b>11-1</b>
	Coalinga	20-0	Win Semi-Final		
<b>1963</b>			<i>No Valley Playoffs (1957-1966)</i>	<i>J.R. Boone</i>	<i>6-3</i>
<b>1961</b>			<i>per CIF Central Section : " to avoid</i>	<i>J.R. Boone</i>	<i>8-1</i>
<b>1960</b>			<i>overlapping of interscholastic athletic</i>	<i>J.R. Boone</i>	<i>7-2</i>
<b>1959</b>			<i>competition and a burden on the youths "</i>	<i>J.R. Boone</i>	<i>8-0</i>
<b>1956</b>	<b>Corcoran</b>	<b>40-6</b>	<b>Win Valley Championship – Sequoia Division</b>	<b>Ray Newman</b>	<b>9-1</b>
<b>1955</b>	<b>Shafter</b>	<b>13-25</b>	<b>Lose Valley Championship – Sequoia Division</b>	<b>Ray Newman</b>	<b>8-1</b>
<b>1952</b>	<b>Wasco</b>	<b>13-14</b>	<b>Lose Valley Championship– Sequoia Division</b>	<b>Clare Slaughter</b>	<b>9-1</b>
<b>1951</b>	<b>Coalinga</b>	<b>26-20</b>	<b>Win Valley Championship – Sequoia Division</b>	<b>Clare Slaughter</b>	<b>8-2</b>
<b>1944</b>			<i>No Valley Playoffs (1942-1944) – World War 2</i>	<i>Huntley Dayton</i>	<i>6-0</i>
<b>1935</b>	<b>Fresno</b>	<b>6-26</b>	<b>Lose - County Championship</b>	<b>Huntley Dayton</b>	<b>3-3-1</b>
<b>1934</b>	<b>Fresno</b>	<b>0-26</b>	<b>Lose - County Championship</b>	<b>Huntley Dayton</b>	<b>5-2</b>
<b>1933</b>	<b>Fresno</b>	<b>7-19</b>	<b>Lose - County Championship</b>	<b>Huntley Dayton</b>	<b>4-1</b>
<b>1932</b>	<b>Fresno</b>	<b>6-18</b>	<b>Lose - County Championship</b>	<b>Huntley Dayton</b>	<b>6-1</b>
<b>1924</b>	<b>Lemoore</b>	<b>0-33</b>	<b>Lose - County Championship</b>	<b>Frank Trine</b>	<b>5-4-1</b>
<b>1909</b>	<b>Selma</b>	<b>0-19</b>	<b>Lose playoff of co-champions - County Championship</b>	<b>Estey Walton</b>	<b>2-1-1</b>



### Coaching History

Years	Coach	# Yrs	# Games	Overall W L T	League W L T	Championships League Valley State
2022	Matt Logue	1	12	6-6-0	4-1-0	- - -
2017-21	Jorge Peña	5	38	31-18-0	15-8-0	1 - -
1990-16	Chuck Shidan <sup>o</sup>	27	314	204-110-0	97-59-0	8 4 -
1986-89	Tosh Nitta	4	40	9-31-0	8-28-0	- - -
1982-85	Roy Tanimoto	4	41	20-19-2	19-16-1	1 - -
1980-81	Fred Ratzlaff	2	19	6-13-0	4-10-0	- - -
1975-79	Gary Scott	5	54	34-16-4	16-8-0	2 1 1
1970-74	Buck Martin	5	51	28-20-2	14-9-2	1 - -
1966-69	John Perkins	4	41	28-10-3	14-5-1	1 1 -
1959-65	J.R. Boone	7	62	43-17-2	32-8-2	4 - -
1957-58	Garrett Arbelbide	2	19	8-11-0	6-5-0	- - -
1955-56	Ray Newman	2	19	17-2-0	8-1-0	2 1 -
1948-54	Clare Slaughter	7	63	44-19-0	29-11-0	2 1 -
1946-47	Everand Jones	2	15	2-13-0	2-11-0	- - -
1926-45	Huntley Dayton	20	133	67-63-8	59-42-6	5 - -
1924-25	Frank Trine	2	18	10-6-2	8-2-1	1 - -
1923	S.T. Glass	1	6	1-5-0	0-5-0	- - -
1922	E.M. Palmer	1	7	1-5-1	0-3-1	- - -
1920-21	J.W. Jones	2	16	2-14-0	2-11-0	- - -
1919	K.M. Barager	1	6	2-4-0	- - -	- - -
1911-18*	unknown	8	3	1-2-0	- - -	- - -
1910	Kinnee	1	6	3-2-1	- - -	- - -
1909	Estey Walton	1	4	2-1-1	- - -	1 - -
1900-08*	unknown	9	20	5-8-7	- - -	- - -
All Seasons thru 2021 <sup>o</sup>		123	1024	575-416-33	334-238-14	29 8 1

Years	Coach	# Yrs	Best Overall Winning %	League Winning %	Play-Off Winning %
1955-56	Ray Newman	2	89.5%	88.9%	1-1 50.0%
1948-54	Clare Slaughter	7	69.8%	72.5%	1-1 50.0%
1959-65	J.R. Boone	7	69.4%	76.2%	n/a
1966-69	John Perkins	4	68.3%	70.0%	2-0 100.0%
1990-16	Chuck Shidan <sup>o</sup>	27	65.0%	62.2%	26-18 59.1%
2017-21	Jorge Peña	5	63.3%	65.2%	0-4 x
1975-79	Gary Scott	5	63.0%	66.7%	4-1 80.0%
1970-74	Buck Martin	5	56.0%	56.0%	n/a
1924-25	Frank Trine	2	55.6%	72.7%	0-1 x
1910*	Kinnee	1	50.0%	n/a	n/a
1909*	Estey Walton	1	50.0%	50.0%	0-1 x
1982-85	Roy Tanimoto	4	48.8%	52.8%	0-1 x
1926-45	Huntley Dayton	20	48.6%	48.2%	0-4 x
1957-58	Garrett Arbelbide	2	42.1%	54.5%	n/a
1919	K.M. Barager	1	33.3%	n/a	n/a
1980-81	Fred Ratzlaff	2	31.6%	28.6%	n/a
1900-09*	unknown	9	29.2%	n/a	0-1 x
1911-18*	unknown	17	26.1%	n/a	n/a
1986-89	Tosh Nitta	4	22.5%	22.2%	n/a
1923	S.T. Glass	1	16.7%	0.0%	n/a
1922	E.M. Palmer	1	14.3%	0.0%	n/a
1946-47	Everand Jones	2	13.3%	15.4%	n/a
1920-21	J.W. Jones	2	12.5%	15.4%	n/a
2022	Matt Logue	1	50.0%	80.0%	1-1 50.0%
All Seasons <sup>o</sup>		123	56.2%	57.0%	34-33 50.7%

	Most Career Wins		Championships		
	Career Wins	Seasons	League	Valley	State
1. Chuck Shidan <sup>o</sup>	204	27	8	4	-
2. Huntley Dayton	65	20	5	-	-
3. Clare Slaughter	44	7	2	1	-
4. J.R. Boone	43	7	4	-	-
5. Gary Scott	34	5	2	1	1
6. Jorge Peña	31	5	1	-	-
7. John Perkins	28	4	1	1	-
8. Buck Martin	28	5	1	-	-
9. Roy Tanimoto	20	4	1	-	-

Coach	Most Winning Seasons in a Row		Period Record		Winning %
	Seasons in a Row	Years	Record	Winning %	
1. Chuck Shidan	13	1996 to 2008	111-46-0	70.7%	
2. Clare Slaughter	5	1949 to 1953	38-9-0	80.9%	
Chuck Shidan	5	2012 to 2016	49-14-0	77.8%	
Buck Martin	5	1971 to 1974	28-20-2	56.9%	
3. Huntley Dayton	4	1931 to 1934	21-7-0	75.0%	
Jorge Peña	4	2017 to 2021S	26-12-0	68.4%	
4. Gary Scott	3	1975 to 1977	27-6-2	77.1%	
John Perkins	3	1967 to 1969	25-6-1	78.1%	
J.R. Boone	3	1963 to 1965	18-8-1	66.7%	
5. Ray Newman	2	1955 to 1956	17-2-0	89.5%	
Chuck Shidan	2	1991 to 1992	15-5-0	75.0%	
Roy Tanimoto	2	1982 to 1983	14-6-1	66.7%	
Frank Trine	2	1924 to 1925	10-6-2	55.6%	

Coach	Most Non-Winning Seasons in a Row		Period Record		Winning %
	Seasons in a Row	Years	Record	Winning %	
1. Huntley Dayton	6	1935 to 1940	15-22-4	36.6%	
2. Tosh Nita	4	1986 to 1989	9-31-0	22.5%	
Huntley Dayton	4	1927 to 1930	9-17-1	33.3%	
3. Chuck Shidan	3	2009 to 2011	15-19-0	44.1%	
Chuck Shidan	3	1993 to 1995	12-18-0	40.0%	
4. J.W. Jones	2	1920 to 1921	2-14-0	12.5%	
Everand Jones	2	1946 to 1947	2-13-0	13.3%	
Fred Ratzlaff	2	1980 to 1981	6-13-0	31.6%	
Roy Tanimoto	2	1984 to 1985	6-13-1	30.0%	
Gary Scott	2	1978 to 1979	7-10-2	36.8%	
Garrett Arbelbide	2	1957 to 1958	8-11-0	42.1%	

	Most Career Winning/Even Seasons			Overall Record	Seasons
	Winning-Losing-Even	%			
1. Chuck Shidan <sup>o</sup>	20	4	3	204-110-0	27
2. Huntley Dayton	8	8	4	67-63-8	20
3. J.R. Boone	6	1	0	43-18-2	7
4. Clare Slaughter	5	2	0	44-19-0	7
Buck Martin	5	0	0	28-20-3	5
5. Jorge Peña	4	0	0	31-18-0	5
6. Gary Scott	3	1	1	34-16-4	5
John Perkins	3	1	0	28-10-3	4
7. Roy Tanimoto	2	1	1	20-19-2	4

	Best Winning % in 1 <sup>st</sup> Season	Record	Year
1. J.R. Boone	100.0%	8-0-0	1959
2. Ray Newman	88.9%	8-1-0	1955
3. Gary Scott	83.3%	10-2-0	1975
4. Roy Tanimoto	72.7%	8-2-1	1982
Jorge Peña	72.7%	8-3-0	2017
5. Huntley Dayton	57.1%	4-2-1	1926
6. Buck Martin	54.5%	6-4-1	1970
7. Frank Trine	50.0%	5-4-1	1924
Matt Logue	50.0%	6-6-0	2022
8. Garrett Arbelbide	40.0%	4-6-0	1957

	Longest Unbeaten Streak	Years
1. John Perkins	17-0-1	1968-1969
2. Gary Scott	16-0-2	1976-1977
3. G. Arbelbide/J.R. Boone	17-0-0	1958-1960

	Longest Winless Streak	Years
1. J.W. Jones	0-13-0	1920-1921
2. E. Jones/H. Dayton	0-11-0	1946-1948
3. Tosh Nita	0-10-0	1986-1987

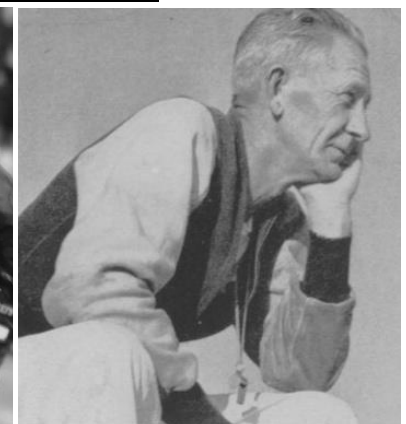
	Undefeated Seasons	Year
1. J.R. Boone	8-0-0	1959
2. Huntley Dayton	6-0-0	1944

	Winless Seasons	Year
1. J.W. Jones	0-8-0	1920
Everand Jones	0-8-0	1947

#### All-Time Winning Coaches



**Chuck Shidan**  
204-110-0  
4 Valley Championships  
8 League Championships



**Huntley Dayton**  
67-63-8  
5 League Championships

\* 19 seasons do not have complete information (7 with no record)

<sup>o</sup> Includes forfeit win vs Hoover in 1990



### Scoring Records

Single Season Differential					
	Year	# Games	Avg Points/Game	Avg Points Scored	Avg Points Allowed
1.	2016	14	25.4	41.3	15.9
2.	1959	8	22.3	32.4	10.1
3.	1998	13	19.2	38.2	19.0
4.	1976	13	18.5	25.6	7.1
5.	1968	12	18.2	22.3	4.2
6.	2005	12	16.9	30.5	13.6
7.	2003	13	16.5	32.8	16.2
	1952	10	16.5	25.4	8.9
8.	1960	9	15.7	20.6	4.9
	2017	11	15.7	31.4	15.6
9.	1999	13	14.8	34.2	19.3
10.	2015	12	14.5	26.8	12.3
	1925	10	14.5	21.9	7.4
11.	1961	9	14.0	23.1	9.1
12.	2014	12	13.5	31.1	17.6
13.	2019	11	13.5	34.5	21.0
14.	1981	10	13.4	25.4	12.0
15.	1965	9	13.3	25.7	12.3
	2013	12	13.3	28.5	15.3
17.	1953	9	13.2	23.7	10.4
16.	1969	10	13.1	19.0	5.9

Most Points Scored				
Year	# Games	Avg/Game in Single Season	Total Scored	
1.	2016	14	41.3	578
2.	1998	13	38.2	496
3.	2019	11	34.5	380
4.	1999	13	34.2	444
5.	2018	11	33.6	370
6.	2003	13	32.8	426
7.	1959	8	32.4	259
8.	2017	11	31.4	345
9.	2014	12	31.1	373
10.	2005	12	30.5	366
11.	2008	13	30.1	391
12.	1996	11	29.5	325
13.	1985	10	29.2	292
	1997	12	29.2	350
14.	1956	10	28.5	285
	2013	12	28.5	342
15.	2012	13	28.3	368
16.	2002	12	27.3	327
	2006	12	27.3	327
17.	2015	12	26.8	321
18.	1995	10	26.5	265
19.	1963	9	25.9	233
20.	2001	13	25.7	334
	1965	9	25.7	231
21.	1976	13	25.6	333
22.	1952	10	25.4	254
	1991	10	25.4	254

Fewest Points Allowed				
Year	# Games	Avg/Game in Single Season	Total Allowed	
1.	1968	12	4.2	50
2.	1960	9	4.9	44
3.	1969	10	5.9	59
4.	1931	9	6.4	58
5.	1924	10	7.0	70
6.	1976	13	7.1	92
	1949	9	7.1	64
	1926	8	7.1	57
7.	1925	10	7.4	74
8.	1975	12	7.7	92
9.	1950	9	8.8	79
10.	1952	10	8.9	89
11.	1961	9	9.1	82
12.	1955	9	9.4	85
13.	1951	10	9.6	96
14.	1970	10	9.7	97
15.	1959	8	10.1	81
16.	1953	9	10.4	94
17.	1974	10	10.6	106
18.	1937	9	10.9	98
	1962	9	10.9	98
19.	1937	9	11.2	101
20.	1937	9	11.3	102
21.	1937	10	11.5	115

minimum 8 game seasons

**Most Combined Points Scored  
Single Game (Site Unknown)**  
129 (0 - 129) versus Selma 1920

**Most Combined Points Scored  
Single Game at Tom Flores Stadium**  
98 (56 - 42) versus Lemoore 2002

**Most Combined Points Scored  
Single Game at Opponent's Stadium**  
93 (33 - 60) versus Reedley 1956

**Most Points Scored  
By Sanger Single Game**  
65 - 21 versus Exeter 1959  
**65 - 27 versus Central 1998**  
63 - 19 versus Madera South 2018  
63 - 27 versus Reedley 2006  
60 - 39 versus Hoover 1997  
59 - 13 versus Reedley 1959  
58 - 0 versus Fowler 1925  
58 - 0 versus Sanger West 2022  
**58 - 21 versus Golden West 2003**

**Most Points Scored  
Against Sanger Single Game**  
0 - 129 versus Selma 1920  
\* 0-83 at half-time was State Record until 2021  
0 - 78 versus Hanford 1921  
0 - 74 versus Fresno 1920  
0 - 66 versus Reedley 1920  
0 - 60 versus Selma 1921  
0 - 60 versus Dinuba 1921  
33 - 60 versus Reedley 1956



### Scoring Records (Cont'd)

<u>Most Touchdowns in Single Game</u>		<u>Year</u>	<u># TDs</u>
1. Brent Webber	versus Lemoore	2003	7
2. Justin Webber	versus Reedley	2006	6
3. Henry Vasques	versus Selma	1952	5
Herman Cooks	versus Central	1998	5
Sammy Maestas	versus Hoover	2001	5

<u>Most Touchdowns in Single Season</u>	<u># Games</u>	<u>Year</u>	<u># TDs</u>	<u>Avg/Gm</u>
1. Herman Cooks	13	1998	38	2.9
2. Brent Webber	13	2003	30	2.3
3. Justin Webber	12	2006	26	2.2
Isaiah Hilliard	12	2015	26	2.2
4. Sergio Carrillo	11	1996	23	2.1
5. Andrew Azua	14	2016	22	1.6
6. Brent Webber	12	2003	21	1.8
Michael Torrejos	13	2008	21	1.6
Jalen Cropper	14	2016	21	1.5
7. Peter Hingano	13	1999	20	1.5
Sammy Maestas	13	2001	20	1.5
Mario Navarrete	13	2008	20	1.5
8. Ernie Reese	10	1956	18	1.8
Mike Christy	9	1965	18	2.0
Kosi Agina	11	2018	18	1.6
Kosi Agina	11	2019	18	1.6

<u>Most Touchdowns in Career</u>	<u># Games</u>	<u>Years</u>	<u># TDs</u>	<u>Avg/Gm</u>
1. Brent Webber	25	2002-03	51	2.0
2. Herman Cooks	25	1997-98	46	1.8
3. Justin Webber	35	2004-06	38	1.1
4. Kosi Agina	22	2018-19	36	1.6
Jalen Cropper	25	2016-17	36	1.4
Andrew Azua	46	2014-16	36	0.8
5. Mario Navarrete	36	2006-08	34	0.9
6. Sammy Maestas	37	1999-01	32	0.9
7. Peter Hingano	26	1998-99	30	1.2
8. Isaiah Hilliard	12	2015	26	2.2
Michael Torrejos	36	2006-08	26	0.7
9. Charles Smith	36	2003-05	25	0.7
10. Bobby Gonzalez	24	2013-14	24	1.0
Victor Rosales	38	2001-03	24	0.6
11. Sergio Carrillo	21	1995-96	23	1.1
Sawyer Pittman	24	2013-14	23	0.8
John Pinedo	34	2009-11	23	0.7
12. Ernie Reese	19	1955-56	22	1.2
13. Ashton Rodriguez	27	2019-21	21	0.8
14. Daniel Maldonado	23	1996-97	20	0.9

<u>Most Rushing Touchdowns in Single Season</u>	<u># Games</u>	<u>Year</u>	<u># TDs</u>	<u>Avg/Gm</u>
1. Herman Cooks	13	1998	34	2.6
2. Brent Webber	13	2003	30	2.3
3. Isaiah Hilliard	12	2015	26	2.2
Justin Webber	12	2006	24	2.0
4. Sergio Carrillo	11	1996	23	2.1
5. Brent Webber	12	2002	21	1.8
6. Michael Torrejos	13	2008	21	1.6
Andrew Azua	14	2016	21	1.5
7. Peter Hingano	13	1999	20	1.5
Sammy Maestas	13	2001	20	1.5
Mario Navarrete	13	2008	20	1.5
8. Mike Christy	9	1965	18	2.0
Ernie Reese	10	1956	18	1.8
Kosi Agina	11	2018	18	1.1

<u>Most Rushing Touchdowns in Career</u>	<u># Games</u>	<u>Years</u>	<u># TDs</u>	<u>Avg/Gm</u>
1. Brent Webber	25	2002-03	51	2.0
2. Herman Cooks	25	1997-98	39	1.6
3. Justin Webber	35	2004-06	35	1.0
Kosi Agina	22	2018-19	35	1.6
4. Andrew Azua	46	2013-16	34	0.7
5. Mario Navarrete	36	2006-08	33	0.9
6. Sammy Maestas	37	1999-01	32	0.9
7. Peter Hingano	26	1998-99	29	1.1
8. Isaiah Hilliard	12	2015	26	2.2
Michael Torrejos	36	2006-08	26	0.7
9. Charles Smith	24	2003-04	25	1.0
10. Brandon Gonzales	24	2013-14	24	0.7
11. Sergio Carrillo	21	1995-96	23	1.1
12. Jalen Cropper	25	2016-17	22	0.9
13. John Pinedo	34	2009-11	21	0.6
Victor Rosales	38	2001-03	21	0.6
14. Sawyer Pittman	24	2013-14	20	0.8

<u>Most Touchdown Passes in Single Game</u>	<u>Year</u>	<u># TDs</u>
1. Ramiro Perez versus Redwood	1971	5
2. Jack Westrick versus Exeter	1963	4
Dustin Hoffman versus Selma	2001	4

<u>Most Touchdown Passes in Single Season</u>	<u># Games</u>	<u>Year</u>	<u># TDs</u>	<u>Avg/Gm</u>
1. Jacob Tijerina	14	2016	15	1.1
Henry Elisarrarez	11	1982	15	1.4
2. Blake Wolf	11	2017	14	1.3
Tee Ramirez	12	1997	14	1.2
Ruben Ramirez	13	1998	14	1.1

<u>Most Touchdown Passes in Career</u>	<u># Games</u>	<u>Years</u>	<u># TDs</u>	<u>Avg/Gm</u>
1. Ruben Ramirez	26	1998-99	29	1.1
2. Dustin Hoffman	37	1999-01	26	0.7

<u>Most Touchdown Receptions in Single Season</u>	<u># Games</u>	<u>Year</u>	<u># TDs</u>	<u>Avg/Gm</u>
1. Jalen Cropper	11	2017	9	0.8
2. Dolce Calandra	11	2019	8	7.3
3. Caleb Bravo	13	1998	7	0.5
David Camacho	13	2001	7	0.5
4. A. Chavez	11	1996	6	0.5
David Camacho	12	2002	6	0.5
Caleb Bravo	13	1999	6	0.5

<u>Most Touchdown Receptions in Career</u>	<u># Games</u>	<u>Years</u>	<u># TDs</u>	<u>Avg/Gm</u>
1. Caleb Bravo	26	1998-99	14	0.5
2. David Camacho	25	2001-02	13	0.5

<u>Most Pass Interception Return for Touchdown in Season &amp; Career</u>	<u>Year</u>
1. Alan Pelayo versus Bullard (82 yds) & Edison (84 yds)	2021S

<u>Most Kick-Off Returns for Touchdown in Single Game</u>	<u>Year</u>	<u># TDs</u>
1. James Pinedo versus Hoover – 93 & 90 yds	1983	2

<u>Most Punt Returns for Touchdown in Single Game</u>	<u>Year</u>	<u># TDs</u>
1. Kris Elizondo versus Reedley – 72 & 43 yds	2013	2

<u>Most Punt Returns for Touchdown in Career</u>	<u>Years</u>	<u># TDs</u>
1. Kris Elizondo 43,60,72 & 76 yds	2013-14	4

<u>Longest Touchdown Run from Scrimmage</u>	<u>Year</u>	<u>Yards</u>
1. Kay Nishimura versus Selma	1960	99
2. John Pinedo versus Bullard	2009	93
3. Mario Navarrete versus Lemoore	2008	91
4. Brandon Gonzalez versus SJ Memorial	2014	88
Miguel Garcia versus Clovis East	2016	88
Morgan Privett versus Hanford	2019	88
5. Bill Kandarian versus Exeter	1959	87*
6. Sawyer Pittman versus SJ Memorial	2014	86
7. Bill Kandarian versus Exeter	1959	85*
8. Kosi Agina versus Reedley	2019	84
9. Kosi Agina versus SJ Memorial	2019	82
10. David Ruiz versus Clovis	1961	81
Kosi Agina versus SJ Memorial	2018	81
Morgan Privett versus Reedley	2019	81
11. Ernie Reese versus Selma	1956	80
12. Henry Vasques versus SJ Memorial	1952	79
13. Travis Turner versus Madera South	2014	75

\*both runs in same game

<u>Longest Touchdown Pass from Scrimmage</u>	<u>Year</u>	<u>Yards</u>
1. Blake Wolfe to Morice Morris versus Hanford	2017	92
2. Joseph Halderman to David Camacho vs Golden West	2002	90
3. Henry Elisarraras to Tim Springs versus Reedley	1982	82
4. Dustin Hoffman to David Camacho versus Edison	2001	80
5. Ruben Ramirez to Herman Cooks versus Reedley	1998	76
6. Jacob Tijerina to Jalen Cropper versus Serra	2016	74

<u>Longest Fumble Return for Touchdown</u>	<u>Year</u>	<u>Yards</u>
1. Herman Cooks versus Madera	1998	95
2. Joel Lamas versus Sanger West	2022	69
3. Pete Beiden versus Fresno	1924	60
Bill Herron versus Clovis	1955	60
4. Frank Krum versus Reedley	1963	39
5. Greg Hart versus Tulare Union	1975	35

<u>Longest Pass Interception Return for Touchdown</u>	<u>Year</u>	<u>Yards</u>
1. Dumar Lee versus Hoover	1992	101
2. Bob Markland versus Bullard	1975	100
3. Derick Stephens	1979	96
Eric Flores	2007	96
4. Aaron Mosby versus SJ Memorial	2016	90
5. David Ruiz versus Wasco	1961	88
6. David Ruiz versus Clovis	1960	83
7. Christian Graney versus SJ Memorial	2016	80





### Scoring Records (Cont'd)

<u>Longest Blocked Field Goal Return for Touchdown</u>		<u>Year</u>	<u>Yards</u>
1. Sawyer Pittman	versus Sunnyside	2013	54
<u>Longest Fake Punt Run for Touchdown</u>		<u>Year</u>	<u>Yards</u>
1. Sawyer Pittman	versus Hoover	2014	48
<u>Longest Punt Return for Touchdown</u>		<u>Year</u>	<u>Yards</u>
1. Billy Jack Pierce	versus Tulare	1976	98
2. Jalen Cropper	versus Bullard	2017	86
<u>Longest Kick-Off Return for Touchdown</u>		<u>Year</u>	<u>Yards</u>
1. Andy Villarreal	versus Sanger West	2022	99
2. Emanuel Ochoa	versus Bullard	2004	98
3. Ernie Reese	versus Dinuba	1955	95
Ato White	versus Reedley	1991	95
4. James Pinedo	versus Hoover*	1983	93
5. Herman Cooks		1997	92
Victor Rosales	versus Lemoore	2002	92
Jacob Gonzalez	versus Bullard	2022	92
6. Charles Mugredechian		1978	91
7. James Pinedo	versus Hoover *	1983	90
8. Adam Galvan		2007	89
9. Manuel Herrera	versus Reedley	1975	88
Jacob Gonzalez	versus SJ Memorial	2022	88
10. Michael Fisher	versus Reedley	2006	86
11. John Hackler	versus Kingsburg	1963	85
Alex Saefong	versus Madera South	2017	85
12. Morgan Privett	versus Paso Robles	2019	82

\*both returns in same game

	<u>Year</u>	<u>Most Field Goals in Single Season</u>	<u>Longest</u>
1. Chris Zumwalt	2007	7 of 8 87.5%	40
2. Steve Mobley	1975	7 of 9 77.8%	35
Steven Villagomez	2012	6 of 6 100.0%	38
	<u>Years</u>	<u>Most Career Field Goals Made</u>	<u>Longest</u>
1. Steve Mobley	1975	7 of 9 77.8%	35
Chris Zumwalt	2006-07	7 of 9 77.8%	40
2. Kris Elizondo	2013-14	7 of 16 43.8%	46
	<u>Year</u>	<u>Longest Field Goal Made</u>	
1. Emmanuel Ochoa	2005	48 yards versus Buchanan	
2. Kris Elizondo	2014	46 yards versus Ridgeview	
3. Kris Elizondo	2014	41 yards versus Madera	
Andrew Azua	2015	41 yards versus Lemoore	
4. Chris Zumwalt	2007	40 yards versus (2) Sunnyside & Reedley	
	<u>Year</u>	<u>Most Extra Point Conversions Single Game</u>	
1. Chris Zumwalt	2006	9 of 9 100.0% versus Reedley	
David Ayala	2018	9 of 9 100.0% versus Madera South	

### Rushing Records

	<u>Years</u>	<u>Most 200+ Yard Games in Career</u>
1. Herman Cooks	1997-98	7
2. Brent Weber	2002-03	5
3. Sergio Carrillo	1995-96	3
Justin Weber	2004-06	3
4. Ernie Reese	1955-56	2
Isaiah Hilliard	2015	2
	<u>Year</u>	<u>Most Yards in Single Game</u>
1. Peter Hingano	1999	410 vs Reedley
2. Brent Webber	2002	354 vs Hanford West
3. Justin Webber	2006	336 vs Reedley
4. Ernie Reese	1956	306 vs Reedley
5. Sam Maestas	1999	300 vs Selma
6. Herman Cooks	1998	263 vs Madera
7. Herman Cooks	1998	262 vs Clovis
8. Peter Hingano	1999	257 vs Madera
9. Brent Webber	2002	253 vs North (Bkfd)
10. Brent Webber	2003	251 vs Mt. Whitney
Ato White	1991	251 vs Roosevelt
11. Herman Cooks	1998	248 vs South (Bkfd)
12. Sergio Carrillo	1996	245 vs Central
13. Charles Smith	2005	241 vs Hoover
14. Herman Cooks	1998	232 vs Hoover
Brandon Gonzalez	2014	232 vs SJ Memorial
15. Brent Webber	2002	225 vs Reedley
Mario Navarette	2006	225
16. Kosi Agina	2018	223 vs Lemoore
17. Andrew Azua	2016	221 vs Ridgeview
18. Ernie Reese	1957	216 vs Selma
Brent Webber	2003	216 vs Hanford West
19. Herman Cooks	1998	214 vs East (Bkfd)
20. Sergio Carrillo	1996	213 vs Selma
21. Herman Cooks	1998	210 vs Edison
22. Sergio Carrillo	1996	213 vs Selma
23. Herman Cooks	1998	208 vs Central
Justin Webber	2006	208 vs Buchanan
24. Adrian Calderon	1994	207
Peter Hingano	1999	207 vs Central
John Pinedo	2011	207 vs Bullard
Isaiah Hilliard	2015	207 vs Clovis East
25. Sergio Carrillo	1996	206
26. Ryan Bird	1995	204
Peter Hingano	1999	204 vs SJ Memorial
Sawyer Pittman	2013	204 vs SJ Memorial
27. Aaron Perez	2009	203 vs Sunnyside
28. Justin Webber	2006	202 vs Fresno
Connor Luallen	2010	202
29. Isaiah Hilliard	2015	200 vs Madera

	<u>Year</u>	<u># Games</u>	<u>Avg/Game</u>	<u>Most Yards in Single Season</u>
1. Herman Cooks	1998	13	197.8	2517
2. Justin Webber	2006	12	147.4	1769
3. Brent Webber	2002	12	146.8	1716
4. Sam Maestas	2001	13	131.5	1710
5. Peter Hingano	1999	13	130.5	1697
6. Brent Webber	2003	13	128.3	1668
7. Sergio Carrillo	1996	11	144.1	1585
8. Isaiah Hilliard	2015	12	127.7	1532
9. Mario Navarette	2008	13	115.2	1498
10. Charles Smith	2005	12	118.2	1418
11. Cory Williams	1997	12	109.7	1316
12. Ato White	1991	10	129.2	1292
13. Michael Torrejos	2008	13	99.2	1289
14. Burt Burk	1976	13	97.9	1273
15. Andrew Azua	2016	14	88.1	1233
16. Brandon Gonzalez	2014	12	100.1	1201
17. Adrian Calderon	1994	10	119.8	1198
18. Adrian Calderon	1995	10	119.4	1194
19. Connor Luallen	2010	11	106.1	1167
20. Kosi Agina	2018	11	99.5	1095
21. Ernie Reese	1956	10	103.6	1036
22. JB Quigley	1987	10	102.4	1024
23. Donald Gonzalez	1988	10	101.4	1014
24. Kosi Agina	2019	11	91.7	1009
	<u>Years</u>	<u># Games</u>	<u>Avg/Game</u>	<u>Most Yards in Career</u>
1. Brent Webber	2002-03	25	137.2	3429
2. Sam Maestas	1999-01	37	89.8	3321
3. Herman Cooks	1997-98	16	178.7	2859
4. Mario Navarette	2006-08	36	78.1	2810
5. Justin Webber	2004-06	35	76.7	2685
6. Peter Hingano	1998-99	26	97.7	2541
7. Andrew Azua	2013-16	46	53.6	2464
8. Victor Rosales	2001-03	38	63.6	2416
9. Adrian Calderon	1994-95	20	117.1	2342
10. Charles Smith	2003-05	36	63.5	2287
11. Kosi Agina	2018-19	22	95.6	2104
12. Brandon Gonzalez	2013-14	24	82.9	1989
13. Ato White	1990-91	20	96.0	1920
14. Michael Torrejos	2006-08	36	51.6	1857
15. Connor Luallen	2009-10	23	79.6	1830
16. Donald Gonzalez	1987-89	30	60.8	1824
17. Sergio Carrillo	1995-96	21	86.2	1811
18. Jalen Cropper	2016-17	25	72.1	1802
19. John Pinedo	2009-11	34	48.5	1650
20. Ted Torosian	1975-76	25	65.2	1629
21. Sawyer Pittman	2013-14	21	73.5	1536
22. Ryan Bird	1994-95	19	80.7	1534
23. Isaiah Hilliard	2015	12	127.7	1532



### Rushing Records (Cont'd)

#### Most Yards/Carry in Single Season

Year	# Games	Avg Carries (Total Carries)
2018	11	10.8 (101)
1976	13	7.9 (161)
2008	13	7.9 (190)
1998	13	7.7 (334)
1988	10	7.3 (140)
1999	13	7.2 (236)
2016	14	7.2 (172)
1997	12	7.1 (185)
1991	10	6.9 (187)
1996	11	6.8 (232)
1987	10	6.7 (152)
2006	12	6.6 (269)
2014	12	6.5 (185)
2015	12	6.4 (105)
2002	12	6.1 (292)
2008	13	6.1 (212)
2010	11	5.8 (200)
2001	13	5.7 (300)
2015	12	5.7 (267)
2003	13	5.5 (306)
1976	13	5.2 (206)

Minimum 100 Carries

#### Most Yards/Carry in Career

Years	# Games	Avg Carries (Total Carries)
1997-98	25	7.7 (391)
1998-99	26	7.5 (341)
2006-08	36	7.2 (392)
2013-16	46	6.8 (362)
2004-06	35	6.7 (399)
1995-96	21	6.4 (284)
2013-14	24	6.3 (311)
2009-10	23	6.1 (299)
2009-11	34	6.1 (269)
2002-03	25	5.7 (598)
2015	12	5.7 (267)
2006-08	36	5.6 (329)
1999-01	37	5.5 (606)
1975-76	25	5.1 (320)

Minimum 250 Carries

#### Most Carries in Single Game

Year	Carries
1999	39
2015	35
1998	34 (x2)
2002	33
2006	33
2003	32
2010	32
1999	31 (x2)
2002	31 (x2)
2003	30 (x2)
2016	30

#### Most Carries in Single Season

Year	Carries
1998	334
2003	306
2001	300
2002	292
2006	269
2015	267
1999	236
1996	232
2008	212
2010	200

#### Most Carries in Career

Years	Carries
1999-01	606
2002-03	598
2004-06	399
2006-08	392
1997-98	391
2013-16	362
1998-99	341
2006-08	329
1975-76	320

### Passing Records

#### Single Game Passing:

Year	Complete	Attempts	%	Most Yards
2001	10	11	90.9%	274
1982	12	14	85.7%	227
1971	14	28	50.0%	213

#### Single Season Passing:

Year	Complete	Attempts	%	TDs/Int	Most Yards
2000	58	103	56.3%	12/8	1552
2001	89	166	53.6%	14/2	1418
1997	86	182	47.3%	14/5	1395
1982	n/a	n/a	n/a	15/n/a	1395
1998	71	132	53.8%	10/10	1295
2017	85	121	70.2%	14/6	1249
1999	70	141	49.6%	12/9	1155
2018	77	142	54.2%	7/6	1148
2016	57	100	70.0%	15/3	1127
2002	56	129	43.4%	8/7	1024

#### Career Passing:

Years	Complete	Attempts	%	TDs/Int	Most Yards
1999-01	148	279	53.0%	26/10	3011
1998-99	141	273	51.6%	29/19	2450
2018-19	130	228	57.0%	17/11	1935
1996-97	100	191	52.4%	16/9	1608

### Receiving Records

Year	Most Single Game Receptions	TDs	Yards
2019	9 vs Hanford	1	137

Year	Most Single Season Receptions	TDs	Yards
2019	37	8	643
2018	37	4	574
1999	37	8	561
2017	35	6	601
1996	34	6	583
1998	33	7	530
2002	31	6	571

Years	Most Career Receptions	TDs	Yards
1997-99	81	14	1298
2016-17	60	7	865
2001-02	55	13	1100

Year	Most Single Game Yards	Receptions	TDs
2019	137 vs Hanford	9	1

Year	Most Single Season Yards	Receptions	TDs
2019	643	37	8
2017	601	35	6
2001	589	24	7
1996	583	34	6
2018	574	37	4
2002	571	31	6
1999	561	37	6
1998	520	33	7

Years	Most Career Yards	Receptions	TDs
1997-99	1298	81	14
2001-02	1100	55	13
2018-19	873	49	9
2016-17	865	60	7
2016-17	844	45	9



### Return Records

Years	Most Punt Return Yards in Single Season
1. Alex Guizar 2002	450 (additional stats unavailable)
2. Billy Jack Pierce 1976	360 (14.4 avg/98 long - 2 TDs)
3. Kris Elizondo 2013	328 (27.3 avg/72 long - 3 TDs)

Years	Most Punt Return Yards in Career
1. Kris Elizondo 2013-14	598 (24.9 avg/76 long - 4 TDs)
2. Alex Guizar 2002	450 (additional stats unavailable)

Year	Most Kick-off Return Yards in Single Season
1. Jose Garcia 2011	441 (21.0 avg/na long - 0 TDs)
2. Morgan Privett 2019	399 (23.4 avg/82 long - 1 TD)
3. Adam Galvan 2007	370 (21.6 avg/89 long - 0 TDs)
4. Michael Fisher 2003	353 (29.4 avg/na long - 1 TD)
5. Manual Herrera 1975	346 (21.6 avg/88 long - 1 TD)
6. Fernando Gonzalez 2019	316 (22.6 avg/82 long - 0 TDs)
7. Vincent Enriquez 2009	313 (15.7 avg/na long - 0 TDs)
8. Billy Jack Pierce 1976	303 (27.5 avg/72 long - 1 TD)

Years	Most Kick-off Return Yards in Career
1. Jose Garcia 2010-11	670 (19.1 avg/na long - 0 TDs)
2. Adam Galvan 2006-07	614 (19.2 avg/na long - 1 TD)

Year	Most Punt/Kick-off Return Yards in Single Game
1. Billy Jack Pierce 1976	200 versus Tulare (102 & TD / 98 & TD)

Year	Most Punt/Kick-off Return Yards in Single Season
1. Billy Jack Pierce 1976	663 (360 punt & 303 kick-off - 18.4 avg - 3 TDs)

Years	Most Punt/Kick-off Return Yards in Career
1. Kris Elizondo 2013-14	766 (598 punt & 168 kick-off -25.5 avg/- 4 TDs)
2. Billy Jack Pierce 1976	663 (360 punt & 303 kick-off - 18.4 avg - 3 TDs)

### Kicking Records

Year	Best Extra Point Conversion % Single Season
1. Chris Zumwalt 2006	36 of 36 100.0%
2. David Ayala 2018	45 of 46 97.8%
3. Thomas Romero 2019	49 of 51 96.1%
4. Steven Villagomez 2012	43 of 45 95.6%
5. Emmanuel Ochoa 2005	39 of 42 92.9%
6. Thomas Lopez 1998	48 of 52 92.3%
7. Andrew Azua 2016	43 of 48 89.6%
8. Kris Elizondo 2013	39 of 44 88.6%
9. Luis Rosas 2003	40 of 45 88.9%
10. Kerry Mobley 1977	37 of 43 86.0%
11. David Ayala 2017	35 of 42 82.9%
12. Thomas Lopez 1997	39 of 47 82.3%

Years	Best Extra Point Conversion % Career
1. Chris Zumwalt 2006-07	60 of 61 98.4%
2. David Ayala 2017-18	80 of 87 92.0%
3. Kris Elizondo 2013-14	79 of 87 90.8%
4. Andrew Azua 2014-16	71 of 79 89.9%
5. Steven Villagomez 2011-12	65 of 73 89.0%
6. Emmanuel Ochoa 2004-05	63 of 72 87.5%
7. Kerry Mobley 1976-77	51 of 61 83.6%
8. Luis Rosas 2002-03	64 of 80 80.0%

Years	Most Extra Point Conversions (in a Row)
1. David Ayala 2018	43 of 43
2. Chris Zumwalt 2006-07	39 of 39
3. Thomas Romero 2019	36 of 36

Years	Most Extra Point Conversions in Career
1. Thomas Lopez 1997-98	87 of 99 87.9%

Year	Most Kick-Off Touchbacks in Single Season
1. Emmanuel Ochoa 2005	28 of 62 45.2%
2. Kris Elizondo 2013	22 of 60 36.7%
3. Kris Elizondo 2014	21 of 67 31.3%

Years	Most Kick-Off Touchbacks in Career
1. Kris Elizondo 2012-14	49 of 147 33.3%
2. Emmanuel Ochoa 2005	28 of 69 40.5%

Year	Longest Punt
1. Sawyer Pittman 2013	68 yds vs Edison
2. Gilbert Montelongo 1976	64 yds vs McLane
3. Sawyer Pittman 2021	63 yds vs Madera

### Defensive Records

Year	Most Pass Interceptions in Single Season
1. Caleb Bravo 1999	9
2. Jonathan Ovalle 2004	9
3. Adam Alva 2001	8
4. Billy Jack Pierce 1976	7
5. Frank Santoya 1966	6
6. Bob Markland 1975	6
7. Gabe Tarango 1996	6
8. Tony Barocio 1999	6
9. Victor Rosales 2003	6

Years	Most Pass Interceptions in Career
1. Caleb Bravo 1997-98	18
2. Tony Barocio 1998-00	13
3. Frank Santoya 1966-67	12
4. Billy Jack Pierce 1975-76	11
5. Bob Markland 1974-76	9

Years	Most Fumble Recoveries in Career
1. Steve Karmann 1975-76	8
2. Josh Myers 1997-97	7

Year	Most Tackles Single Game (Unassisted/Assisted)
1. Gabriel Webb 2018	21 L vs Clovis East (11-10)
2. Miguel Garcia 2015	19 W vs Madera South (5-14)
3. Pierce Jones 2018	18 L vs Arroyo Grande (5-13)
4. Armando Ayala 1975	17 W vs Bullard (2-15)
5. Steve Mobley 1977	17 T vs Clovis (2-15)
6. Miguel Garcia 2014	17 L vs Bullard (5-12)
7. Jorge Peña 2018	17 L vs Arroyo Grande (7-10)
8. Steve Mobley 1975	16 W vs Bullard (2-15)
9. Anthony Martinez 2014	16 W vs Madera (6-10)

Year	Most Tackles Season (Unassisted/Assisted)
1. Lafele Fautanu 2008	132 (46-86)
2. Aaron Gonzalez 2008	130 (46-84)
3. Miguel Garcia 2016	130 (59-71)
4. Miguel Garcia 2015	129 (57-72)
5. Pierce Jones 2018	129 (45-84)
6. Josh Myers 1998	115 (41-71)
7. Leo Garcia 2006	112 (47-68)
8. Anthony Garcia 2012	109 (40-69)
9. Andrew Horn 1999	106 (44-62)
10. Joe Ortiz 2001	105 (43-62)

Years	Most Tackles Career (Unassisted/Assisted)
1. Miguel Garcia 2013-16	369 (155-214)
2. Lafele Fautanu 2007-09	274 ( 91-183)
3. Miguel Garcia 2013-15	239 ( 96-143)
4. Aaron Gonzalez 2006-08	227 ( 80-147)
5. Jacob Houston 1999-2001	205 (104-101)

Year	Most Quarterback Sacks in Single Game
1. Bill Herron 1955	4.0 versus Roosevelt
* Team 2017	9.0 versus Hanford
Team 2015	8.0 versus Lemoore

Year	Most Quarterback Sacks in Single Season
1. Jacob Houston 2001	11.5
2. Isaac Halls 2002	10.0
3. Angel Alvarez 2015	9.5

Years	Most Quarterback Sacks in Career
1. Jacob Houston 1999-2001	20.5
2. Angel Alvarez 2014-2015	18.0

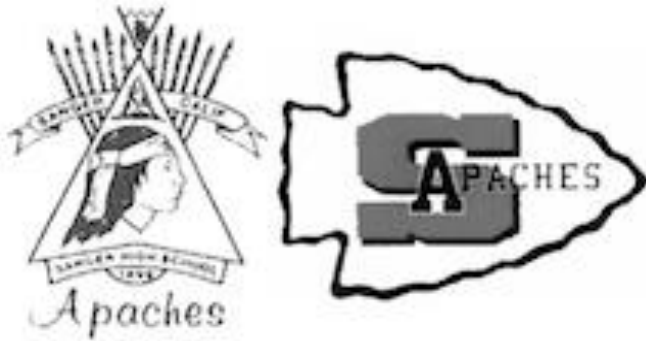
Year	Most Blocked Punts in Single Game
1. Michael Morales 2013	2 versus Bullard
Angel Alvarez 2015	2 versus Clovis East (both in 1 <sup>st</sup> Qtr)



### Tid Bits

#### Mascot History

- \* 1899-1930 – Sanger High School had no nickname, just Sanger
- \* 1930-1931 – Sanger High School's nickname was Giants
- \* January 1932 – Sanger High School's mascot became APACHES



**1st Night Games Played**  
1931 @ Hanford 13 - 0  
1941 versus Hanford 6 - 6

**Last Day Game Played**  
1976 @ Redwood 30 - 14

**Earliest Date 1st Game Played** August 17, 2018 versus Reedley 45 - 0  
**Latest Date 1st Game Played** March 26, 2021 versus Kingsburg 6 - 7

**Hottest Game-Time Temperature Played**  
107° at 5pm JV & 101° at 7:30pm Varsity  
August 31, 2012 – versus Hoover @ kick-off 28 - 7

**Overtime Games (\* Playoff Game)**  
\*2006 vs Buchanan 35 - 34 (3OT) \*2003 vs Redwood 26 - 21  
2017 @ Lemoore 40 - 38 (2OT) \*2002 vs Centennial 20 - 21  
\*2011 @ Redwood 41 - 42 (2OT)

**Most Team Rushing Yards in Single Game**  
524 Total 44 - 13 versus Reedley 1999

**Most Total Points Scored at Tom Flores Stadium**  
98 Total 56 - 42 versus Lemoore 2003

**Most Touchdowns on 1st Play of Series From Scrimmage**  
4 Total 55 - 13 versus Clovis East 2016  
\* 35, 58, 88, 37 yards (all rushing)

**Most Safeties By Sanger in Single Game**  
2 versus Mt. Whitney (Vis) 2013

**Milestone Coaching Wins**  
**Chuck Shidan #200**  
53 - 14 versus Madera 2016



**Year Most Single Season All-Purpose Yards**  
1. Herman Cooks 1998 2813  
(2517 Rush & 296 Receiving)

**Years Most Career All-Purpose Yards**  
1. Jalen Cropper 2016-17 3555  
(1802 Rush, 844 Receiving, 277 Passing & 632 Returns)  
2. Herman Cooks 1997-98 3405  
(2859 Rush & 564 Receiving)

#### Most Sanger Penalty Yards in Single Game

- 2021S – 20 for 184 yards vs Madera / Win 35 – 12
- 2010 – 16 for 158 yards @ Mt. Whitney (Vis) / Win 28 – 7
- 1976 – 14 for 140 yards @ Selma / Win 46 – 0
- 1977 – 13 for 135 yards @ Hoover / Tie 13 – 13
- 2014 – 14 for 125 yards @ Redwood (Vis) / Loss 23 – 27
- 2014 – 14 for 114 yards @ Ridgeview (Bkfd) / Loss 23 – 30
- 1976 – 11 for 110 yards @ Clovis / Loss 7 – 14
- 2013 – 11 for 110 yards @ Reedley / Win 42 – 7
- 2017 – 10 for 107 yards @ Fresno / Win 42 – 0
- 2018 – 9 for 103 yards vs Madera / Win 36 – 33
- 2016 – 8 for 102 yards @ Sunnyside / Win 56 – 9
- \*Combined Teams 2021S – 29 for 281 yards vs Madera / Win 35 – 12

#### Most Penalty Yards Single Season

Year	Season Totals	# Games	Avg/Game
1. 2001	97 for 959 yards	13	7.5 for 73.8 yards
2. 1998	95 for 932 yards	13	7.3 for 71.7 yards
3. 1996	94 for 878 yards	11	8.5 for 79.8 yards
4. 1976	89 for 855 yards	13	6.8 for 65.8 yards
5. 2002	100 for 839 yards	12	8.3 for 69.9 yards
6. 1999	82 for 806 yards	13	6.3 for 62.0 yards
7. 2014	89 for 746.5 yards	12	7.4 for 62.2 yards
8. 2016	74 for 734.5 yards	14	5.3 for 52.5 yards
9. 2010	83 for 729.5 yards	11	7.5 for 66.3 yards
10. 1975	79 for 716 yards	12	6.6 for 59.7 yards
11. 2015	86 for 712 yards	12	7.2 for 59.3 yards

#### All-State Recognition by CAL-HI Sports

Miguel Garcia – 2016 Large Schools 3<sup>rd</sup> Team Defense, LB  
Jalen Cropper – 2016 Sophomore 2<sup>nd</sup> Team Offense, RB/ATH  
Jonathan Ybarra – 2023 Sophomore 2<sup>nd</sup> Team Offense, OL

#### State Athletes of the Year by CAL-HI Sports

Kosi Agina – 2018-19 Junior Honors – Football, Track  
Andrew Azua – 2016-17 Division II – Seniors, Football, Wrestling, Baseball

#### 63<sup>rd</sup> City/County All-Star Game MVP

Andrew Azua – 2016  
Scored 4 Touchdowns & kicked 5 extra points (29 total points) in County win 41-22

2020: Season delayed to Spring 2021 due to the Covid-19 Pandemic

#### Central Section's Oldest Football Teams

- Fresno Warriors 1892
- Selma Bears 1894
- Redwood (Visalia thru 1953) Rangers 1895
- Bakersfield (Kern County thru 1944) Drillers 1896
- Tulare Union (Redskins) Tribe 1897
- Porterville Panthers 1897
- Paso Robles Bearcats (joined section in 2018) 1899
- Hanford Bullpups 1899
- Sanger Apaches 1900**
- Dinuba Emperors 1903
- Fowler Redcats 1903
- Madera Coyotes 1908
- Lemoore Tigers 1908
- Exeter Monarchs 1909
- Lindsey Cardinals 1909



### Tid Bits (Cont'd)

**Most Central Section Team Wins over 500 thru 2022** (CalHi Sports)

	<u>All-Time</u>	<u>State Rank</u>	<u>Section Rank</u>	<u>vs Sanger</u>
1. Bakersfield	806-293-43	# 2	# 1	2-1-0
2. Dos Palos	679-293-25	# 3	# 2	2-5-0
3. Lompoc*	614-373-21	#17	n/a (7-4-0)	never played
4. Tehachapi**	611-335-25	#18	n/a (338-253-42)	never played
5. Paso Robles***	603-364-28	#20	n/a (25-24-0)	0-3-0
6. Fowler	595-xxx-xx	#23	# 3	16-21-2
7. Tulare Union	593-471-39	#24	# 4	8-11-1
8. Kingsburg	581-397-24	#29	# 5	16-13-3
<b>9. Sanger</b>	<b>575-416-33</b>	<b>#32</b>	<b># 6</b>	<b>203-180-17 vs 500+ Win Teams</b>
10. Clovis	566-379-21	#37	# 7	39-24-2
11. Fresno	529-519-47	#57	# 8	17-24-0
12. Dinuba	526-xxx-xx	#60	# 9	5-10-1
13. Selma	522-494-34	#62	#10	32-39-3
14. Porterville	521-510-48	#63	#11	1-3-0
Hanford	521-xxx-xx	#63	#11	10-14-2
15. Woodlake	519-xxx-xx	#64	#12	1-0-0
16. Caruthers	518-xxx-xx	#65	#13	0-1-0
17. Lemoore	513-xxx-xx	#71	#14	31-34-3
18. Washington U	498-xxx-xx	#81	#15	4-14-3

\*Lompoc : Central Section 2022+, / Southern Section 1921-2021 (607-36-21)

\*\*Tehachapi : Central Section 1930-32, 1935-56, 1992+ / Southern Section 1933-34, 1957-91 (272-82-13)

\*\*\*Paso Robles : Central Section 2018+ / Southern Section 1919-2017(576-340-28)

**Central Section's - Most Coaching Wins**

1. Leo Robinson	41 yrs	Woodlake	290-17-11
2. Tim Simmons	28 yrs	Roosevelt, Clovis, Clovis North	249-94-7
3. Darren Bennett	31 yrs	Central Valley Christian, Tulare	227-114-1
4. Ned Permenter	37 yrs	Foothill (Bkfd)	220-157-9
5. Mike Sparks	23 yrs	Dos Palos	209-68-2
Paul Briggs	33 yrs	Bakersfield	209-99-12
6. Goldie Griffith	36 yrs	Bakersfield	207-50-27
<b>7. Chuck Shidan</b>	<b>27 yrs</b>	<b>Sanger</b>	<b>204-110-0<sup>o</sup></b>
8. Steve Denman	24 yrs	Tehachapi (300-117-4) <sup>oo</sup>	203-89-2
9. Tom Cassanova	28 yrs	Caruthers	203-110-5

<sup>o</sup> includes forfeit win vs Hoover in 1990    <sup>oo</sup> includes 10 years (1982-91) in Southern Section

**All-Time Sanger Records by County**

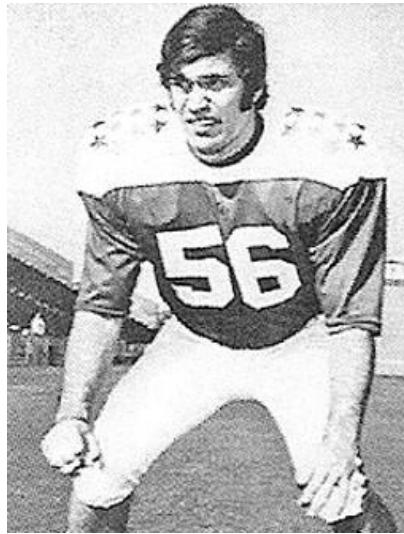
1. Fresno	379-304-22
2. Tulare	70-35-3
3. Kings	58-43-5
4. Kern	22-16-1
5. Merced	5-2-0
6. San Luis Obispo	3-2-0
7. San Mateo	0-1-0

**All-Time Sanger Coaching Records vs Reedley**

1. Chuck Shidan	25-4-0	86.2%
2. Huntley Dayton	16-4-0	80.0%
3. J.R. Boone	6-0-1	85.7%
4. Clare Slaughter	5-2-0	71.4%
5. John Perkins	3-1-0	75.0%
6. Gary Scott	3-2-0	60.0%
7. Frank Trine	2-0-0	100.0%
Jorge Peña	3-0-0	100.0%
8. Roy Tanimoto	2-2-0	50.0%
9. unknown	1-0-0	100.0%
10. K.M. Barager	1-1-0	50.0%
Everand Jones	1-1-0	50.0%
Ray Newman	1-1-0	50.0%
Fred Ratzlaff	1-1-0	50.0%
11. Tosh Nita	1-3-0	25.0%
12. E.M. Palmer	0-1-0	n/a
S.T. Glass	0-1-0	n/a
13. Garrett Arbelbide	0-2-0	n/a
14. J.W. Jones	0-3-0	n/a
15. Buck Martin	0-4-1	n/a
<b>All Time</b>	<b>71-33-2</b>	<b>67.0%</b>



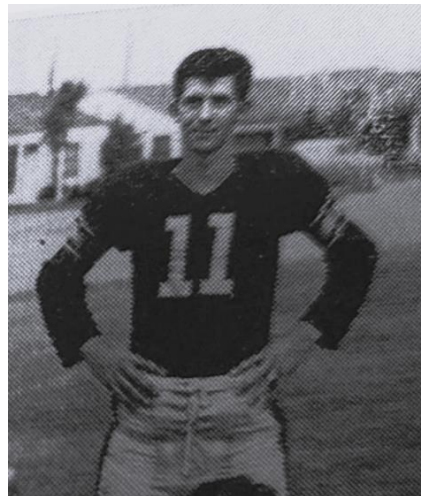
College All-Americans



Jim Merlo ('67-68)  
Fresno JC Rams 1969  
Fresno JC Rams 1970  
Stanford Indians 1972



Nick Katzemayer ('30-32)  
St. Marys Gaels  
1939



Henry (Hank) Vasques ('51-52)  
Reedley JC Tigers  
1956



Bill Herron ('54-55)  
Georgia Bulldogs  
1959



Ernie Reese ('55-56)  
Utah Utes  
1960



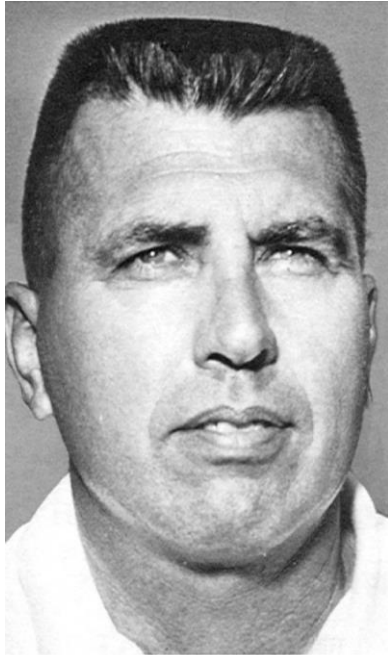
Atomic Torosian ('64-65)  
Reedley JC Tigers  
1967



Brent Webber ('02-03)  
Sacramento State Hornets  
2004



College Head Coaches



Clare Slaughter  
Fresno City JC 1959-79 (136-61-6)  
JC State Championships 1968, 69, 72 & 73  
Sanger High 1948-54



JR Boone  
Reedley JC 1966-72 (56-13-3)  
Fresno State 1973-75 (10-24)  
JC State Championship 1971  
Sanger High 1959-65



John Perkins  
Reedley JC 1974 (n/a)  
Sanger High 1966-69



Ray Newman  
Bakersfield JC 1959-66 (65-11)  
JC National Championship 1959  
Sanger High 1955-56



**Professional Players**



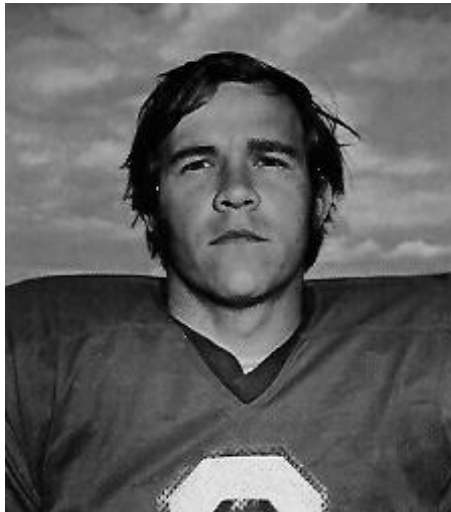
Nick Papac ('51-52)  
14 Games  
Oakland Raiders (AFL)  
1961



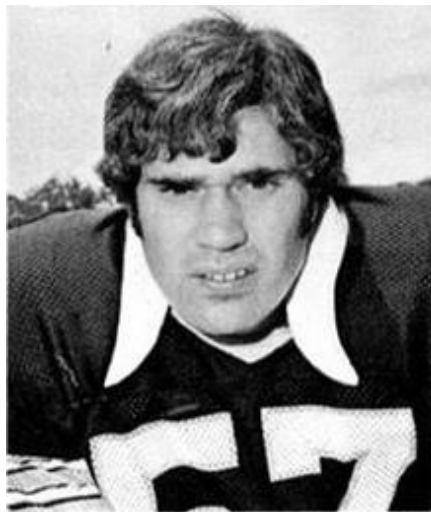
Tom Flores ('52-53)  
112 Games  
Kansas City Chiefs 1969 (AFL)  
Buffalo Bills 1967-69 (AFL)  
Oakland Raiders 1960-66 (AFL)  
Bakersfield Spoilers 1958 (PFC)



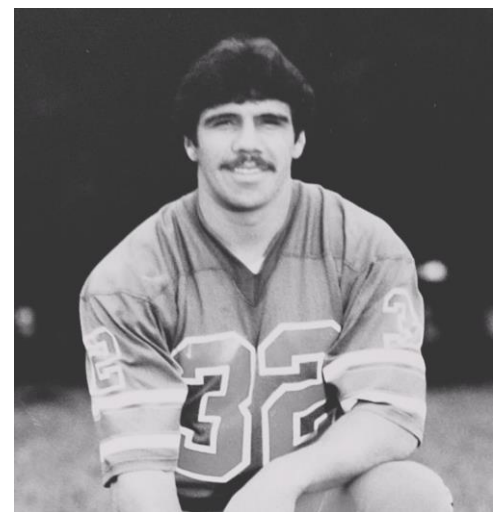
Bill Herron (54-55)  
6 Games  
BC-Vancouver Lions (CFL)  
1960



Bruce Barnes ('67-68)  
23 Games  
New England Patriots (NFL)  
1973-74



Jim Merlo ('67-68)  
88 Games  
New Orleans Saints (NFL)  
1973-79



Ted Torosian ('75-76)  
24 Games  
Oakland Invaders (USFL)  
1983-84



Aaron Mosby ('15-17)  
3 Games  
Carolina Panthers (NFL)  
2022



### Professional Coach

#### **Tom Flores, Head Coach**

195 Games

Oakland/Los Angeles Raiders 1979-87 (NFL)

Seattle Seahawks 1992-94 (NFL)

\*Assistant Coach: Buffalo Bills 1971 (NFL)

\*Assistant Coach: Oakland Raiders 1972-1978 (NFL)



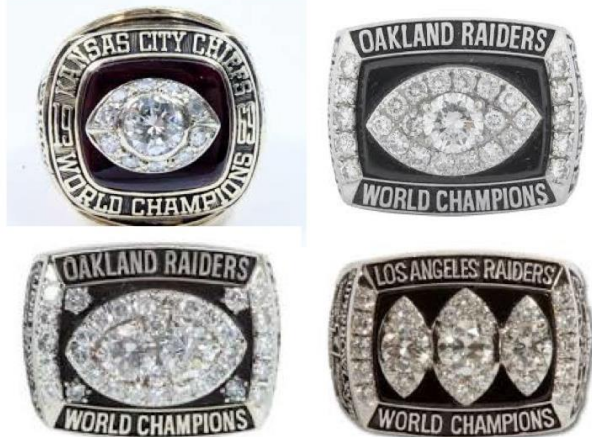
#### **4 Super Bowl Rings**

1969 Kansas City Chiefs (Player) Super Bowl IV

1976 Oakland Raiders (Asst Coach) Supr Bowl XI

1980 Oakland Raiders (Head Coach) Super Bowl XV

1983 Los Angeles Raiders (Head Coach) Super Bowl XVIII



## **Pro Football Hall of Fame (NFL) Inductee 2021**





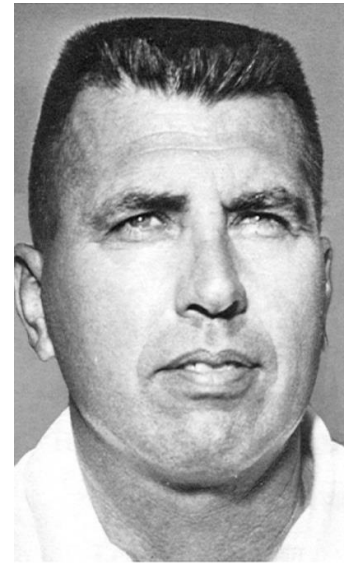
**Fresno Athletic Hall of Fame Inductees**



Huntley Dayton  
1971



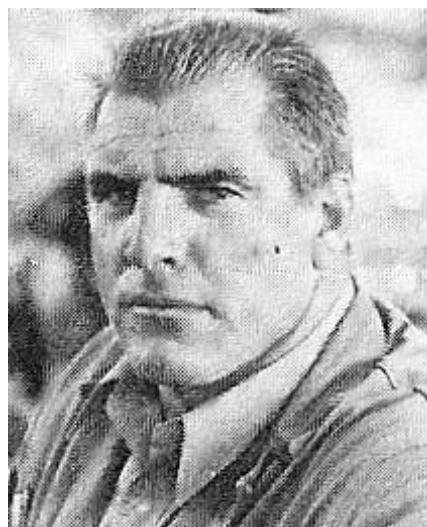
JR Boone  
1972



Clare Slaughter  
1983



Tom Flores  
1988



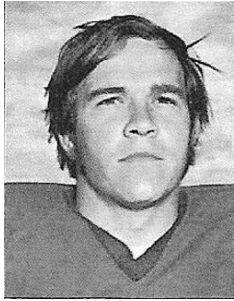
Dean Philpott  
1993



Jim Merlo  
1993



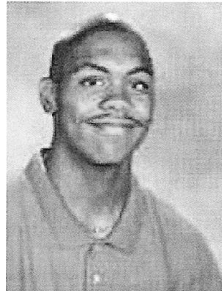
**Sanger High Athletic Hall of Fame Inductees**



Bruce Barnes  
2018



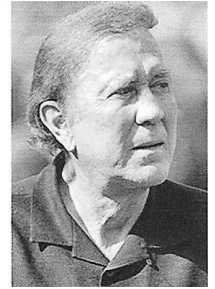
JR Boone  
2018



Herman Cooks  
2018



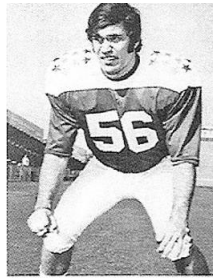
Huntley Dayton  
2018



Tom Flores  
2018



Nick Katzemayer  
2018



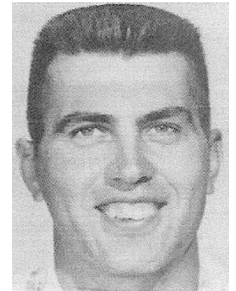
Jim Merlo  
2018



Lou Papac  
2018



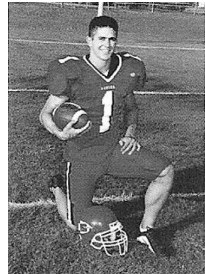
Bill Powell  
2018



Clare Slaughter  
2018



Atomic Torosian  
2018



Brent Webber  
2018



Wille Garcia  
2019



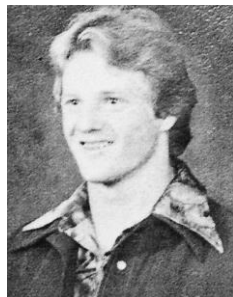
Chuck Shidan  
2019



Ted Torosian  
2019



Tony Herron  
2020



Billy Jack Pierce  
2020



Ernie Reese  
2021



Ray Newman  
2022



Henry Vasquez  
2023



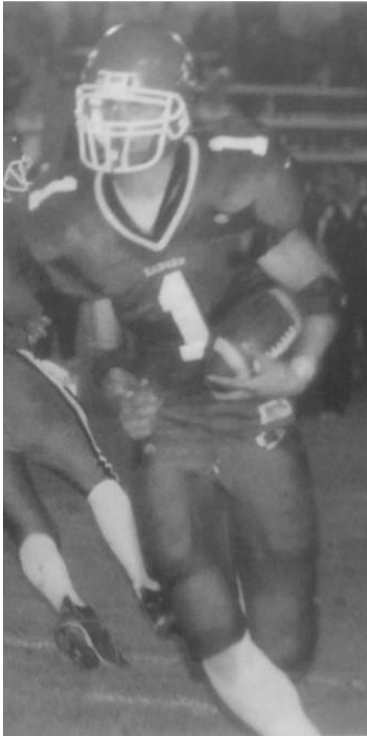
1951 Team  
2020



1976 Team  
2022



### Rushing Milestones



**Brent Webber - 2002-03**  
#1 All-Time Career  
3429 yds  
(5.7/rush & 137.2/game)



**Herman Cooks - 1998**  
#1 All-Time Single Season  
2571 yds  
(7.7/rush & 197.8/game)



**Peter Hingano - 1999**  
#1 All-Time Single Game  
410 yds  
(12.1/rush versus Reedley)



**Kay Nishimura- 1960**  
#1 All-Time Longest Touchdown  
99 yds \*Tied for State Record  
(versus Selma)



**Ernie Reese - 1956**  
1<sup>st</sup> 1000 yd Single Season  
1036 yds  
(n-a/rush & 103.6/game)



**Bert Burk - 1976**  
2<sup>nd</sup> 1000 yd Single Season  
1273 yds  
(7.9/rush & 97.9/game)



**Ato White - 1991**  
3<sup>rd</sup> 1000 yd Single Season  
1292 yds  
(n-a/rush & 129.2/game)



**Sergio Carrillo - 1996**  
1<sup>st</sup> 1500 yd Single Season  
1585 yds  
(6.8/rush & 144.1/game)



### All-Time #1 Touchdown Milestones



**Brent Webber - 2002-03**  
Most Touchdowns - Career  
51



**Herman Cooks - 1998**  
Most Touchdowns - Single Season  
38



**Brent Webber - 2003**  
Most Touchdowns - Single Game  
7 versus Lemoore



**James Pinedo - 1983**  
Most Kick-off Returns for  
Touchdown - Single Game  
2 versus Selma



**Kris Elizondo - 2013**  
Most Punt Returns for Touchdown - Single Game  
2 versus Reedley



**Ramiro Perez - 1971**  
Most Touchdown Passes - Single Game  
5 versus Redwood



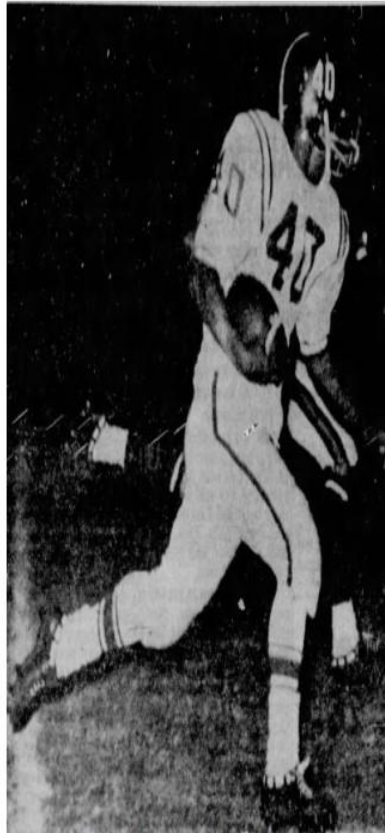
### All-Time #1 Touchdown Milestones



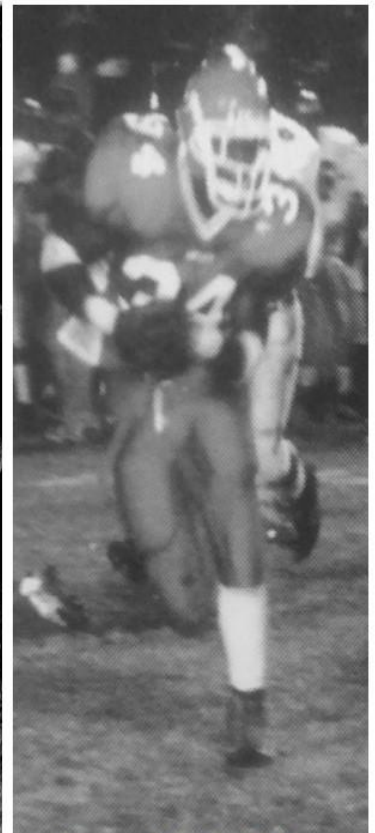
**Andy Villarreal - 2022**  
Longest Kick-off Return for Touchdown  
99 yds versus Sanger West



**Billy Jack Pierce - 1976**  
Longest Punt Return for Touchdown  
98 yds versus Tulare Union



**Kay Nishimura - 1960**  
Longest Run from Scrimmage for Touchdown  
99 yds versus Selma  
\*Tied for State Record



**Herman Cooks - 1998**  
Longest Fumble Return for Touchdown  
95 yds versus Madera



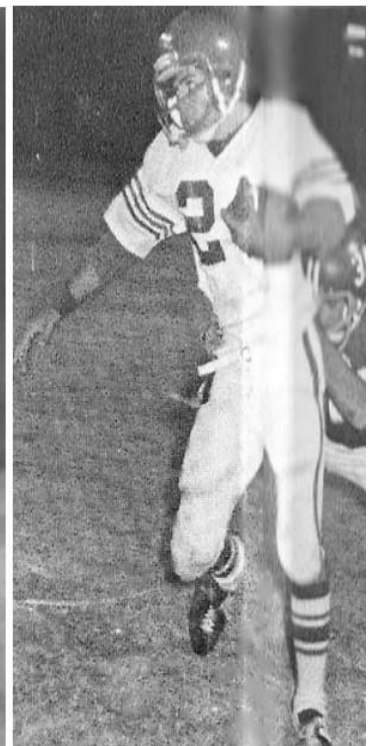
**Blake Wolfe to Morice Morris - 2017**  
Longest Pass from Scrimmage for Touchdown  
92 yds versus Hanford



**Sawyer Pittman - 2013**  
Longest Blocked Field Goal  
Return for Touchdown  
54 yds versus Sunnyside



**Dumar Lee - 1992**  
Longest Pass Interception Returns for Touchdown  
101 yds versus Hoover



**Bob Markland - 1975**  
Longest Pass Interception Returns for Touchdown  
100 yds versus

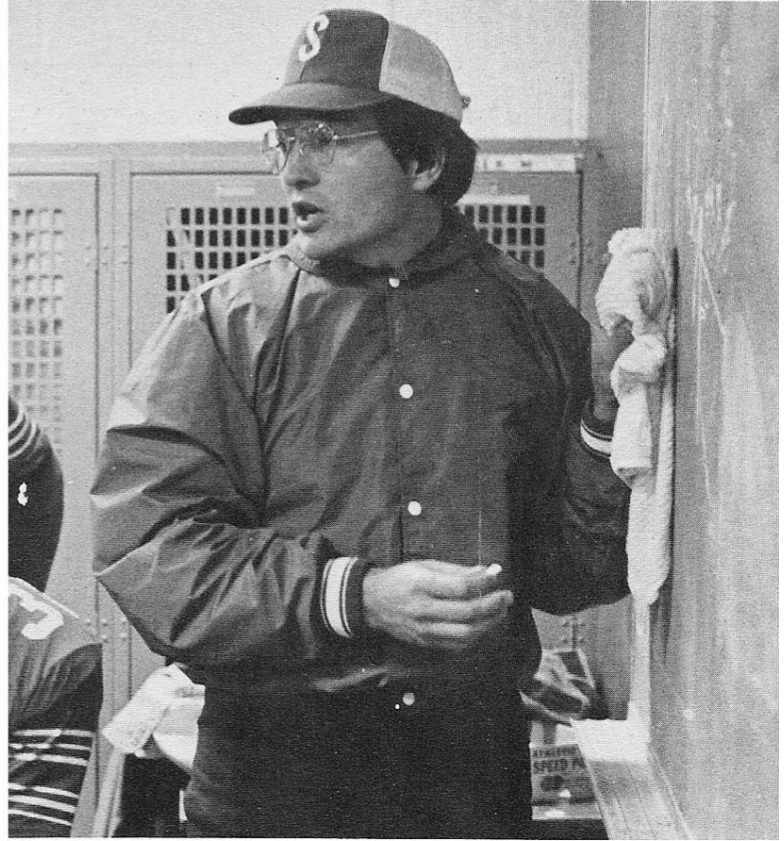


Valley Championship Coaches



**Chuck Shidan**

2016 - Northern California Regional Championship Bowl Runner-up - 2A  
2016 - Division 2, Valley #3 (13-1-0)  
2003 - Yosemite Division - Small Schools (11-2-0)  
2001 - Yosemite Division - Small Schools (10-3-0)  
1998 - Yosemite Division - Small Schools (11-2-0)  
*Runner-up:*  
2012 - Division 2 (10-3-0)  
1999 - Yosemite Division - Small Schools (9-4-0)



**Gary Scott**

1976 - State Champion - AAA  
1976 - State Team of the Year - Division 2  
1976 - Yosemite Division, Valley #1 (12-1-0)



**John Perkins**

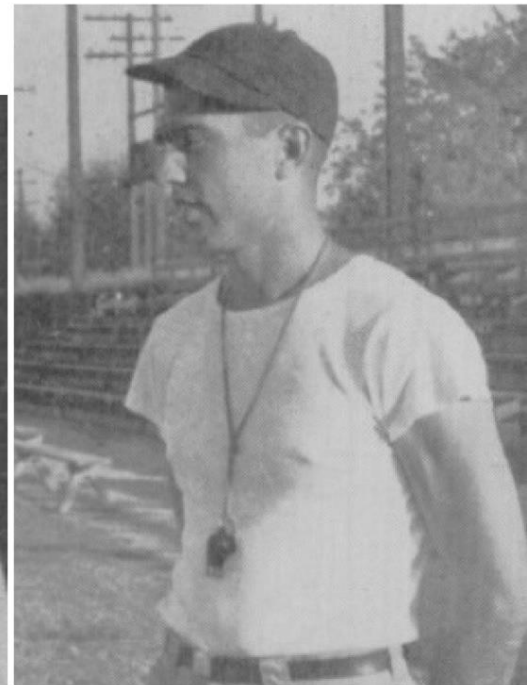
1968 - Sequoia Division, Valley #2 (11-1-0)



**Ray Newman**

1956 - Sequoia Division (9-1-0)

*Runner-up:*  
1955 - Sequoia Division (8-1-0)



**Clare Slaughter**

1951 - Sequoia Division (8-2-0)

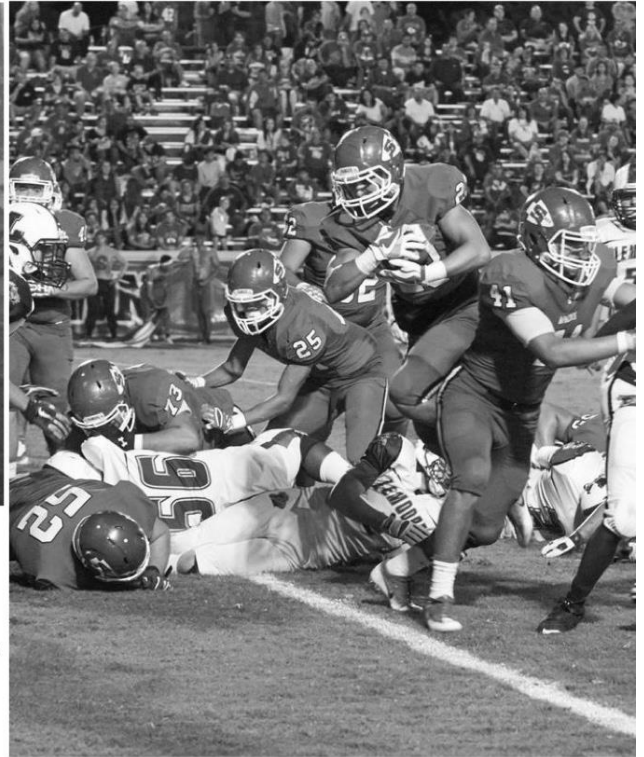
*Runner-up:*  
1952 - Sequoia Division (9-1-0)



### Championship Team Milestones



1976 - Valley Champion, Only State Team of the Year, Only State AAA #1, Only Valley #1 & 1<sup>st</sup> 12 Win Season



2016 - Only Undefeated Valley Championship Season & Only 13 Win Season



1968 - Valley Champion & 1<sup>st</sup> 11 Win Season



1944 - League Champion & 1<sup>st</sup> of only 4 Undefeated Regular Seasons



1951 - 1<sup>st</sup> Valley Champion & 1<sup>st</sup> 8 Win Season



1924 - League Champion & 1<sup>st</sup> 5 Win Season

1909 - 1<sup>st</sup> League Champion (photo unavailable)





### Championship Teams

2021 Spring – 4-1-0

**DIVISION 2 – Honorable Mention STATE FINAL RANK** by CAL-HI Sports  
**#7 VALLEY RANK** by MaxPreps

COUNTY METRO ATHLETIC CONFERENCE CHAMPIONS

Kingsburg	6-7
Bullard	14-6
Edison	34-0
Madera	35-12
SJ Memorial	28-21

Valley Playoffs  
no Valley Playoffs

\*Season impacted by  
Covid-19 Pandemic

A.Alaniz, J.Almaguer, B.Alvarez, E.Arrellano, J.Avila, A.Babagian, I.Bercerril, A.Betancourt, M.Botello, A.Bruce,C.Cano, R.Cantu, G.Cervantes, K.Chambers, G.Cordero, J.Dhaliwal, L.Dillon, J.Duarte, E.Escareno, G.Estrada, JC.Flores, JC.Garcia-Vargas, S.Gomez, F.Gonzalez, E.Guerrero, C.Harrell, E.Leon, R.Lopez, J.Lunar, M.Marquez, A.Pelayo, Ja.Peña, Jo.Peña, H.Pittman, M.Privett, J.Rocker, A.Rodriguez, J.Rutherford, C.Torres, I.Saavedra, S.Shidan, B.Valle, R.Vargas, N.Wise, J.Zamora  
Coaches: JORGE PEÑA - Jaime Ayala, Abel Gallardo, Justin Janzer, Nikko Motta, Rob Thompson, Jeremiah Toma, Steve Villagomez,



2016 – 13-1-0

**DIVISION 2 – #9 STATE FINAL RANK** by CAL-HI Sports  
**#3 VALLEY RANK** by MaxPreps

**DIVISION 2A – STATE NORTH REGIONAL CHAMPIONSHIP BOWL Runner-up**  
**DIVISION 2 – VALLEY CHAMPIONS**

COUNTY METRO ATHLETIC CONFERENCE CHAMPIONS

Fresno	28-21	Bullard	21-19
Hanford	31-14	Madera South	49-14
Clovis East	55-13	Edison	28-18
Lemoore	55-14	Madera	53-14
Reedley	48-0	SJ Memorial	56-21

Valley Playoffs  
Dinuba 42-6  
Sunnyside 56-9  
Ridgeview 20-10

State Playoffs  
Serra (San Mateo) 36-49

S.Alba, A.Azua, J.Arreola, RJ.Benegas, J.Betancourt, H.Butt, A.Castillo, A.Childress, N.Collazo, J.Cropper, M.Davila, M.Garcia, J.Garnica, J.Garza, M.Gaytan, C.Graney, M.Hakasson, M.Herrera, D.Klose, M.Lealaimatafo, J.Lopez, R.Lopez, E.Martinez, JA.Mora, E.Montelongo, Z.Montelongo, R.Moreno, V.Moreno, A.Mosby,J.Mendoza, C.Moua, S.Oliva, J.Ornelas, B.Rodriguez, C.Rodriguez, D.Rodriguez, J.Romias, C.Rosales, C.Soria, N.Steele, J.Tijerina, R.Urbe, A.Valencia, B.Wolf  
Coaches: CHUCK SHIDAN, Jorge Peña, Abel Gallardo, Mario Gonzalez, Steve Villagomez, Nikko Motta, James Beddell, Rob Thompson, Jaime Ayala



Valley Championship Tid-Bit:

Only Sanger team to host 4 playoff games (3 Valley & 1 Nor-Cal Regional State Bowl) with attendance of 7,500+ for the Valley Championship and Bowl games.



2015 – 10-2-0

**DIVISION 2 – Honorable Mention STATE FINAL RANK** by CAL-HI Sports  
**#10 VALLEY RANK** by MaxPreps

**COUNTY METRO ATHLETIC CONFERENCE CHAMPIONS**

Redwood	28-7	Madera South	35-21	<u>Valley Playoffs</u>
Hoover	34-6	Edison	23-6	Garces Memorial 13-10
Clovis East	32-15	Madera	35-10	Lemoore 5-13
Lemoore	19-21	Bullard	21-14	
Reedley	34-7	SJ Memorial	42-17	

A.Alvarez, M.Alvarez, M.Argulo, J.Arreola, A.Azua, N.Azzaro, DJ.Bustamonte, A.Castillo, M.Castillo, N.Collazo, Z.Cox, M.Davila, R.Esparza, C.Fraser, K.Frederick, M.Garcia, J.Garnica, J.Garza, M.Gaytan, A.Gonzalez, D.Gonzalez, C.Graney, E.Herrera, T.Herring, I.Hilliard, E.Koenig, M.Lealaimatafao, J.Lopez, I.Mata, E.Martinez, J.Mendoza, J.A.Mora, V.Moreno, A.Mosby, C.Moua, S.Oliva, J.Ornelas, D.Pathammavong, J.Ramirez, J.Roberts, N.Steele, C.Soria, J.Tijerina, M.Valdovinos, A.Valencia, T.Willhoite  
Coaches: CHUCK SHIDAN, Jorge Peña, Abel Gallardo, Eddie Milam, Alex Campos, Mario Gonzalez, Steve Villagomez, Nikko Motta, Jeremiah Toma



2014 – 8-4-0

**COUNTY METRO ATHLETIC CONFERENCE Co-CHAMPIONS**

Redwood	23-27	Madera South	41-14	<u>Valley Playoffs</u>
Hoover	50-12	Edison	15-14	SJ Memorial 49-26
Clovis East	37-34	Madera	38-0	Ridgeview 23-30
Lemoore	22-27	Bullard	17-20	
Reedley	34-0	SJ Memorial	24-7	

R.Aguire, A.Alvarez, M.Alvarez, J.Arreola, J.Ayala, A.Azua, N.Azzaro, G.Benson, J.Berragan, Z.Brown, DJ.Bustamante, E.Casarez, M.Castillo, Z.Cox, M.Davila, K.Elizondo, E.Franco, K.Frederick, J.Garcia, M.Garcia, A.Gonzalez, B.Gonzalez, D.Gonzalez, J.Haynie, E.Herrera, T.Herring, I.Hilliard, A.Ibarra, E.Koenig, M.Leon, J.Lopez, D.Marez, A.Martinez, I.Mata, V.Mejia, R.Nunez, G.Olivo, K.Patel, D.Pena, S.Pittman, J.Ramirez, A.Rangel, D.Salinas, F.Silva, C.Soria, C.Taiamanez, I.Townsend, T.Turner, J.Urbano, T.J.Willhoite  
Coaches: CHUCK SHIDAN, Jorge Peña, Matt Logue, Abel Gallardo, Steve Villagomez, Eddie Milam, Mario Gonzalez, Johnny Pinedo

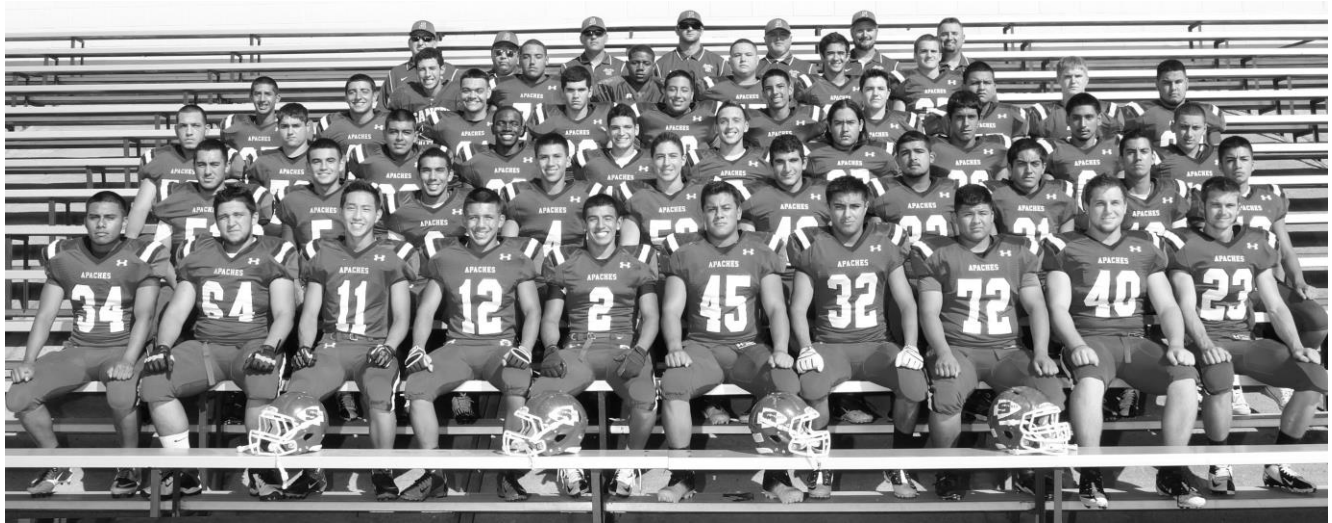




**2012 – 10-3-0**  
**DIVISION 2 – VALLEY Championship Runner-up**  
**COUNTY METRO ATHLETIC CONFERENCE Co-CHAMPIONS**

Sunnyside	20-17	Edison	35-29	<u>Valley Playoffs</u>	
Hoover	28-7	Madera	45-37	Redwood	17-14
Mt. Whitney	17-49	Bullard	7-17	West	41-7
Lemoore	22-20	Madera South	42-7	Garces Memorial	24-49
Reedley	42-0	SJ Memorial	28-7		

J.Arguello, J.Ayala, B.Bradley, E.Bretado, M.Cornacchia, A.Contreras, A.Cortez, J.DeAnda, L.DeLaCerde, D.Delgado, K.Elizondo, M.Estrada, S.Figueroa, B.Ford, R.Gallegos, A.Garcia, V.Jaime, L.Lee, I.Lynch, D.Macias, S.Magallon, C.Marez, B.Mattern, K.McCandless, S.Mercado, M.Morales, J.Moreno, B.Navarrete, S.Paboojian, J.Padilla, J.Papaleo, S.Pittman, R.Ramirez, H.Rangel, P.Reyes, J.Rickman, A.Rodriguez, N.Rogers, I.Romo, A.Salazar, C.J.Sanchez, J.Sanchez, C.Santos, R.Serna-Dominquez, E.Shufford, A.Silva, D.Soto, C.Torres, S.Villagomez, O.Villagran, M.Vitucci, J.Zambrano  
Coaches: CHUCK SHIDAN, Jorge Peña, Matt Logue, Alex Campos, Abel Gallardo, Steve Villagomez, Mario Gonzalez, Ed Milam



**2006 – 8-4-0**  
**COUNTY METRO ATHLETIC CONFERENCE CHAMPIONS**

Sunnyside	27-3	Edison	28-24	<u>Valley Playoffs</u>	
Clovis East	6-21	McLane	45-7	Buchanan	35-34 3ot
Lemoore	6-7	Hoover	27-25	Clovis West	7-35
Clovis	21-31	Bullard	21-14		
Fresno	41-13	Reedley	63-27		

B.Alvarado, S.Arambula, D.Arce, V.Ayala, J.Almaraz, D.Baca, N.Baird, J.Borelli, D.Brunit, J.Carrillo, J.collazo, R.Cortez, A.Delgado, S.Dunn, J.Elizondo, J.Fernandez, M.Fisher, E.Flores, T.Foster, K.Francone, L.Garcia, A.Galvan, R.Garza, A.Gonzalez, R.Hernandez, W.Hingano, P.Melkonian, S.Mendoza, P.Montelongo, A.Montemayor, O.Morales, N.Motta, M.Navarette, M.Nicacio, R.Nunez, O.Olmos, B.Peyton, C.Ramirez, T.Rodriguez, J.Sandoval, AJ Sanchez, M.Tenny, M.Torrejos, M.Vargas, C.Velasquez, J.Webber, J.Wild, A.Ybarra, C.Zumwalt  
Coaches: CHUCK SHIDAN, Jim Duckhorn, Abel Gallardo, Mario Gonzalez, Rick Leetch, Angelo Mata, Jorge Peña, Abe Poduska, Victor Rosales





2004 – 6-5-0

COUNTY METRO ATHLETIC CONFERENCE Co-CHAMPIONS

Buchanan	14-27	Sunnyside	20-0
Porterville	22-7	Hoover	33-16
Liberty	14-21	Bullard	26-42
Clovis	14-21	Edison	14-7
Fresno	43-21	Reedley	37-21

Valley Playoffs  
Centennial 14-17

L.Aguilar, S.Arquello, J.Azua, B.Baker, W.Barnett, D.Barrera, M.Bonham, R.Casarez, J.Chacon, L.corral, J.Dominquez, F.Esparza, J.Flores, K.Francone, R.Fregoso A.Garcia, R.Gonzalez, N. Greene S.Hart, R.Hernandez,G.Kovar, J.Lara, D.Luallen, I.Mata, R. Mendiola E.Medina, A.Nicacio, E.Ochoa, R.Ovalle, R.Patlan, M. Peoples, M.Rivera, A.Rodriquez, T.Salazar, L.Salinas, E.Santos, R. Sifuentes, J.Showwalter, C.Smith, M.Solorio, L.Trejo, T.Vasquez, J. Vela, S.Verduzco, C.Villarreal, J.Vukson, J.Webber, J.Younkin, R.Zavala  
Coaches: CHUCK SHIDAN, Jim Duckhorn, Mario Gonzalez, Jesse Hardwick, John Krum, Rick Leetch, Angelo Mata, Jorge Peña, Tim Smith



2003 – 11-2-0

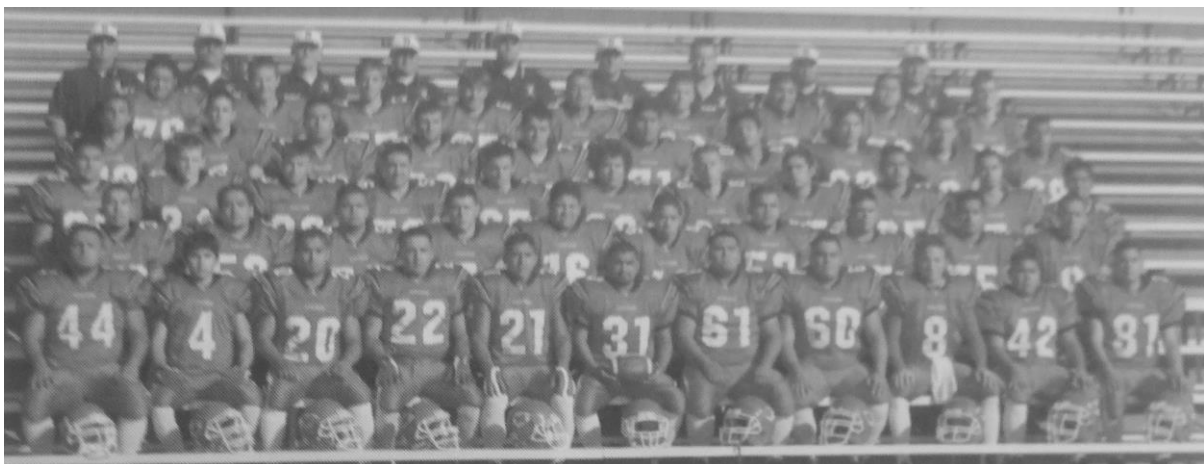
**DIVISION 2 – #9 STATE FINAL RANK** by CAL-HI Sports  
**#3 VALLEY RANK** by Calpreps

**YOSEMITE DIVISION – SMALL SCHOOL VALLEY CHAMPIONS**  
**WEST YOSEMITE LEAGUE CHAMPIONS**

Reedley	19-21	Hanford West	32-7
Hoover	13-7	Redwood	21-10
Sunnyside	53-24	Hanford	35-7
Clovis East	14-21	Mt. Whitney	41-20
Lemoore	56-42	Golden West	58-21

Valley Playoffs  
Reedley 35-3  
Redwood 26-21 ot  
Centennial 23-7

L.Aguilar, M.Alvarado, J.Avila, J.Azuna, D.Barrera, W.Barnett, M.Bonham, A.Cantu, N.Champion, C.Cooper, F.Esparza, A.Esquivel, D.Fernandez, A.Figueroa, AJ Franco, R.Fregosa, R.Gines, D.Gonzalez,A.Guizar, J.Haldeman, R.Maltos, S.Maltos, S.Mantos, S.McCulloch, N.Montoya, M.Munoz, A.Nicacio, E.Ochoa, G.Olmos, C.Quintero, Ca Rodriquez, V.Rosales, L.Rosas, R.Ruiz, T.Salazar, S.Saldana, E.Santos, N.Santoya, M.Serna, J.Severns, R.Sifuentes, C.Smith, M.Solorio, J.Taylor, C.Tittle, J.Alvarez-Tovar, L.Trejo, J.Vasquez, S.Verduzco, J.Vukson, B.Webber. Coaches: CHUCK SHIDAN, Tony Audino, Jim Duckhorn, Jesse Hardwick, John Krum, Rick Leetch, Angelo Mata, Jorge Peña, Tim Smith





**2002 – 10-2-0**  
**WEST YOSEMITE LEAGUE CHAMPIONS**

Reedley	21-7	Hanford West	38-20
Hoover	29-39	Redwood	21-19
Sunnyside	37-20	Hanford	35-7
Clovis East	17-0	Mt. Whitney	20-19
Lemoore	34-14	Golden West	27-0

Valley Playoffs

North	21-9
Centennial	20-21 ot

M.Alvarado, B.Alvarez, J.Alvarez, M.Arenas, W.Barnett, J.Barrera, M.Bonham, D.Camacho, A.Cantu, C.Cooper, A.Fernandez, D.Figueroa, AJ Franco, I.Garcia, N.Garza, R.Gines, M.Ginez, D.Gonzalez, N.Greene, A.Guizar, J.Halderman, I.Halls, R.Hart, J.Hurtado, M.Larsen, S.Maldonado, J.Manriquez, P.McLenithan, C.Mulligan, G.Olmos, A.Penalber, Dan Perez, Dav Perez, AJ Poindexter, T.Ponce, C.Quintero, J.Rivas, Car Rodriguez, Con Rodriguez, V.Rosales, L.Rosas, R.Ruiz, A.Santos, J.Severns, J.Taylor, J.Torres, J.Alvarez-Tovar, S.Valdez, J.Vasquez, S.Verduzco, M.Walls, B.Webber  
Coaches: CHUCK SHIDAN, Tony Audin, Jim Duckhorn, John Krum, Rick Leetch, Angelo Mata, Jorge Peña, Tim Smith, Bill Szpor



**2001 – 10-3-0**

**DIVISION 2 – #10 STATE FINAL RANK** by CAL-HI Sports  
**#10 VALLEY RANK** by Calpreps

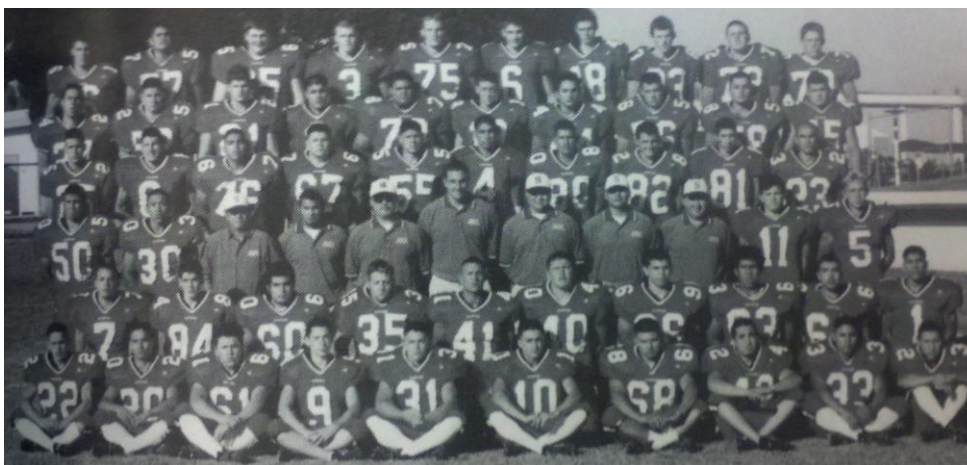
**YOSEMITE DIVISION – SMALL SCHOOL VALLEY CHAMPIONS**

Reedley	6-26	Mt. Whitney	28-21
Hoover	41-31	Hanford	34-12
Sunnyside	34-12	Lemoore	41-20
Central	14-19	Redwood	14-3
Selma	46-16	Golden West	6-32

Valley Playoffs

East	28-7
Edison	26-25
Centennial	20-3

N.Alba, A.Alva, A.Alvarez, B.Alvarez, F.Alvarez, J.Alvarez, A.Barocio, C.Bernal, S.Bracke, D.Camacho, C.Cooper, J.Galvan, N.Garza, R.Gines, J.Graney, A.Guizar, J.Graney, I.Halls, J.Hardeman, R.Helwig, D.Herrera, M.Hernandez, D.Hoffman, J.Houston, J.Leffel, J.Lopez, P.McLenithan, S.Maestas, K.Maldonado, S.Maldonado, J.Manriquez, A.Marquez, A.Martinez, C.Martinez, R.Martinez, S.Morales, F.Nevarez, J.Ortiz, H.Payan, A.Penalber, D.Perez, J.Peyton, AJ Poindexter, T.Ponce, G.Ponte, G.Ramirez, J.Rivas, V.Rosales, E.Rodriguez, L.Rodriguez, R.Ruiz, C.Rusca, J.Salazar, J.Santos, M.Serna, J.Severns, J.Stephens, J.Torres, I.Trevino, S.Valdez, B.Webber, J.Ybarra  
Coaches: CHUCK SHIDAN, Jim Duckhorn, John Krum, Rick Leetch, Fernando Lopez, Angelo Mata, Jorge Peña, Tim Smith





1998 – 11-2-0  
YOSEMITE DIVISION – SMALL SCHOOL VALLEY CHAMPIONS

Reedley 46-6	Clovis 28-38	<i>Valley Playoffs</i>	South 35-10
Hoover 30-16	Clovis West 0-38		East 52-21
Golden West 41-30	Madera 33-18		Edison 35-28
Fresno 44-8	Buchanan 37-7		
Selma 55-0	Central 65-27		

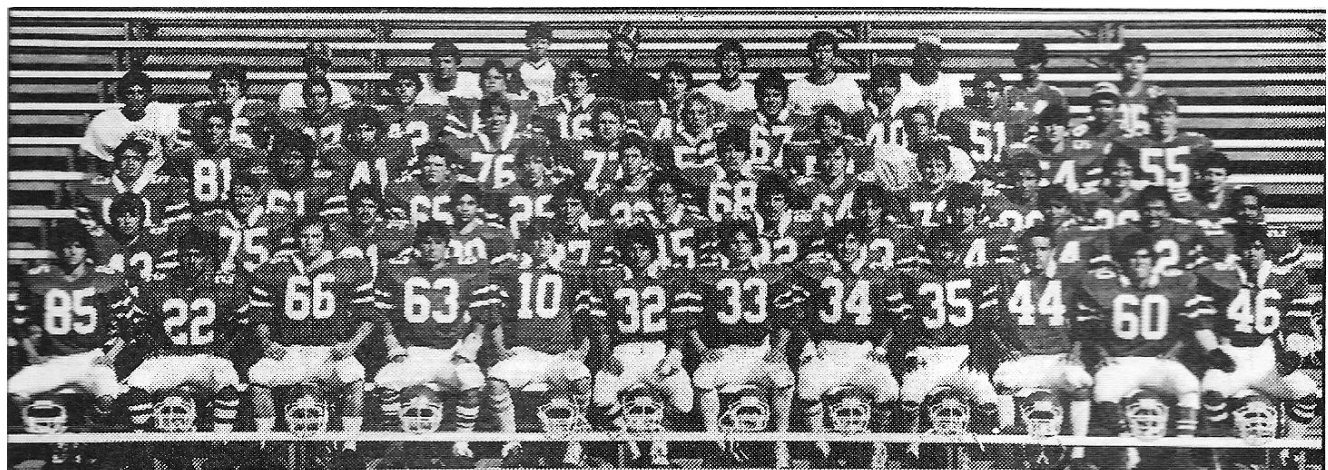
D.Alvarado, A.Alvarez, M.Baracio, C.Bravo, D.Burkett, G.Butler  
N.Campbell, T.Caprelian, H.Cooks, J.DeGraw, E.Delsid, R.Diaz,  
M.Dueck, H.Fortaney, R.Gamez, J.Garcia, G.Garza, I.Garza,  
A.Gaucin, R.Gaucin, P.Gonzalez, S.Gonzalez, C.Herron,  
P.Hingano, A.Horn, Jd Johnson, Jn Johnson, E.Knight, J.Krum,  
D.Larson, D.Lopez, N.Lopez, T.Lopez, A.Mata, O.Medina,  
C.Mendoza, J.Meyers, O.Morales, J.Moreno, P.Moreno, M.Perez,  
D.Pruneda, A.Ramirez, R.Ramirez, J.Regalado, S.Rosales,  
J.Salazar, T.Scheffler, J.Soto, A.Takeda, J.Trevino, J.Vasquez,  
J.Ybarra, J.Wood, T.Barocio, M.Cano, C.Picassi  
Coaches: CHUCK SHIDAN, Robbie Balllew, Jim Duckhorn,  
James Gambell, Jesse Hardwick, John Krum, Jorge Peña



1982 – 8-2-1  
NORTH YOSEMITE LEAGUE CHAMPIONS

Reedley 13-7	Roosevelt 13-7	<i>Valley Playoffs</i>	Bakersfield 13-41
Edison 21-16	Fresno 21-0		
Bullard 7-20	Hoover 34-12		
Clovis 14-13	McLane 26-0		
Madera 7-0	Clovis West 24-24		

A.Aguillar, J.Aiello, J.Alvarado, R.Ballew, S.Bellman, R.Brown, S.Cade,  
A.Campos, Condley, B.Couchman, C.Cucuk, T.Diaz, R.Duran,  
S.Edmonds, M.Elisarrarez, L.Elizondo, J.Estrada, J.Futrell, S.Garcia,  
J.Garza, B.Gallardo, F.Gonzales, R.Gomes, S.Hogopian, J.Hurtado,  
R.Isom, J.Jonigian, A.Kroell, M.Krum, M.Lea, T.Lantsberger, A.Long,  
H.Mora, D.Matsumura, R.Mendoza, A.Molina, D.Nichols, O.Owens,  
P.Paboojian, A.Perez, M.Pipkins, J.Pinedo, A.Ramirez, B.Regehr,  
R.Rodriguez, J.Rutherford, M.Schmidtgal, T.Springs, J.Staffero,  
K.Stearns, C.Tange, E.Terran, E.Vasquez, J.Valverde, D.Vermillion,  
E.Villarreal, S.Wade, L.Westerlund, D.Whitworth  
Coach: ROY TANIMOTO, Tom Cheney, Jim Deaver, Ray Farmer,  
Sonny Gonzalez, Dennis Keran, Rick Leetch, Kay Nishimura, Bob  
Stephens, George Keener





1976 – 12-1-0

**CLASS AAA – #1 CALIFORNIA STATE FINAL RANK** by CAL-HI Sports  
**DIVISION 2 – CALIFORNIA STATE TEAM of the YEAR** by CAL-HI Sports  
**#1 VALLEY RANK** by Fresno Bee  
**YOSEMITE DIVISION – VALLEY CHAMPIONS**  
**WEST YOSEMITE LEAGUE CHAMPIONS**  
**Sanger High School Athletic Hall of Fame – 2022 Inductees**

Clovis	7-14	Hanford	19-6	<u>Valley Playoffs</u>	
Bullard	28-13	Redwood	30-14	Arvin	32-6
Hoover	13-0	Mt Whitney	28-6	McLane	7-6
Selma	46-0	Lemoore	28-8	Foothill	21-0
Tulare Union	46-12	Reedley	28-7		

Mike Alvarado, Bert Burk, Steve Combs, Jeff Claiborne, Randy Deaver, Bill Dela Torre, Edwin Esparza, Mike Floyd, Omar Gallardo, Eli Garcia, Peter Grant, Eppie Gonzales, Ruben Gonzales, Richard Gutierrez, Greg Hart, Tony Herron, Roger Hemman, James Jurique, Steve Karmann, Craig Lawley, Kevin Lowery, Tim Lindeman, Mark Lopez, Louis Mata, Bob Markland, Johnny Martinez, Ray Martinez, Tom Merlo, Nick Mercado, Johnny Morales, Oscar Morales, Kerry Mobley, Gilbert Montelongo, Tim Ogawa, Ray Ovalle, Billy Jack Pierce, Rob Powell, Bubba Ramos, Roland Rico, Bobby Rodriguez, Ray Rodriguez, David Salinas, Jeff Shahbazian,, Greg Simonian, Kevin Sonksen, Bill Stroppe, Mark Tawls, Ted Torosian, Manuel Torres, Dennis Vermillion, Brian Watson, Chuck Wills, Randy Welch  
Coaches: GARY SCOTT, Fred Ratzlaff, Jim Duckhorn, Bob McKitrick, Dennis Keran



**Valley Championship Tid-Bit:**

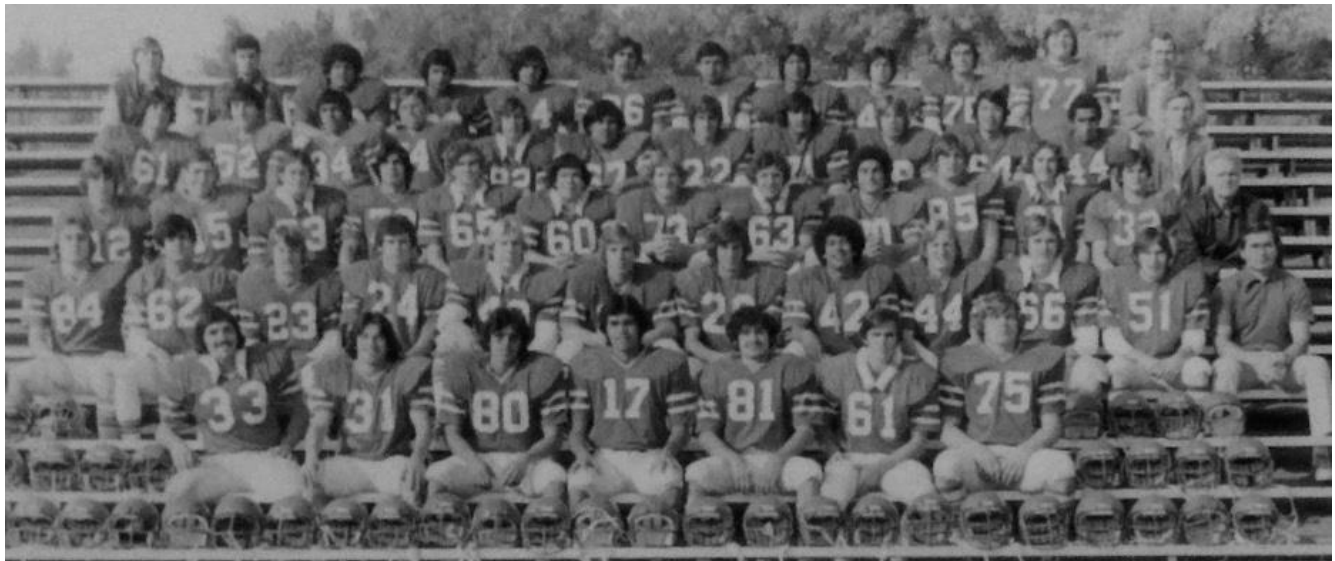
At the end of the 1976 season, the CIF scheduled all play-off games at neutral sites. . . . forcing Sanger (as the #1 ranked team) to play all "home" games at Lamonica Stadium in Clovis.

1975 – 10-2-0

**WEST YOSEMITE LEAGUE CHAMPIONS**

Clovis	6-40	Hanford	3-2	<u>Valley Playoffs</u>	
Bullard	13-0	Redwood	24-0	Bakersfield	17-0
Hoover	28-12	Mt. Whitney	14-12	Edison	3-13
Selma	14-0	Lemoore	16-10		
Tulare Union	20-0	Reedley	13-3		

H.Alvarado, M.Alvarado, S.Andrews, T.Arquette, A.Ayala, J.Brandt, B.Burk, C.Carlson, B.DeLa Torre, D.Edwards, O.Gallardo, T.Gipson, C.Gong, D.Hines, S.Harrigan, G.Hart, S.Heredia, M.Herrera, S.Hernandez, B.Hoffman, G.Kaprielian, S.Karmann, P.Lascano, K.Lowery, C.Lawley, M.Mamigonian, B.Markland, T.Mendoza, N.Mercado, R.Milson, S.Mobley, O.Morales, R.Ovalle, BJ Pierce, D.Ramos, S.Ramos, H.Reyna, G.Rico, S.Sanchez, B.Stroppe, R.Schietewiltz, N.Sergent, J.Shahbazian, S.Sherfield, G.Simonian, K.Sonkson, T.Torosian, J.Vasquez, B.Villarreal, R.Welch  
Coaches: GARY SCOTT, "Red" Smith, Jim Duckhorn, Bob McKitrick





1971 - 6-4-0

WEST YOSEMITE LEAGUE Co-CHAMPIONS

Clovis	18-43	Selma	13-0	<u>Valley Playoffs</u>
Bullard	28-0	Redwood	40-17	did not qualify
Hoover	22-14	Mt. Whitney	18-0	Reedley advanced
Washington Union	18-20	Lemoore	14-7	
Tulare Union	7-13	Reedley	6-26	

A.Adanalian, W.Alvarado, M.Aprile, K.Barnes, B.Boos, S.Brandt, E.Brown, D.Cantu, A.Castillo, R.DeCanio, S.Earnhart, B.Galli, M.Gipson, B.Griffith, J.Haroian, K.Harrigan, D.Helwig, B.Hightower, B.Johnson, L.Kaprelian, G.Keener, R.Ketcher, L.King, D.Kuge, M.Lewis, A.Lopez, G.Macias, R.Martinez, R.Medina, R.Medrano, R.Merlo, J.Munoz, F.Nunez, R.Perez, E.Rivera, P.Struffert, T.Tacata, B.Vaughn, K.Wilken  
Coach: BUCK MARTIN, Jim McKittrick, Bill Perkins, Roy Tanimoto



1968 - 11-1-0

#2 VALLEY RANK by Fresno Bee  
SEQUOIA DIVISION - VALLEY CHAMPIONS

EAST SEQUOIA LEAGUE CHAMPIONS

Clovis	7-12	Corcoran	21-6	<u>Valley Playoffs</u>
Bullard	13-6	Reedley	35-7	Coalinga 20-0
Sierra	34-6	Lemoore	21-0	Garces Memorial 13-0
Washington Union	27-6	Selma	28-0	
Tulare Union	7-0	Tulare Western	42-7	

C.Ashley, J.Atondo, B.Barnes, M.Bender, R.Bohannon, B.Boone, B.Blunt, G.Branch, S.Champion, P.Freiberger, M.Gardner, G.Gerner, J.Harding, R.Hernandes, R.Hiraga, G.Horn, L.Howard, T.Kanagawa, K.Kister, C.Leath, C.Macias, A.Medrano, F.Merlo, J.Merlo, A.Munoz, G.Ogawa, M.Perez, R.Rusca, E.Salinas, J.Shamshoian, A.Sherfield, J.Showalter, C.Sonkson, S.Strope, H.Summers, C.Weber, M.Wilson  
Coach: JOHN PERKINS, Armando Gonzales, Merlin Lund



Valley Championship Tid-Bit:

Sanger defeated Garces with fog so dense that neither fans nor press box could see most of the game (in Sanger).



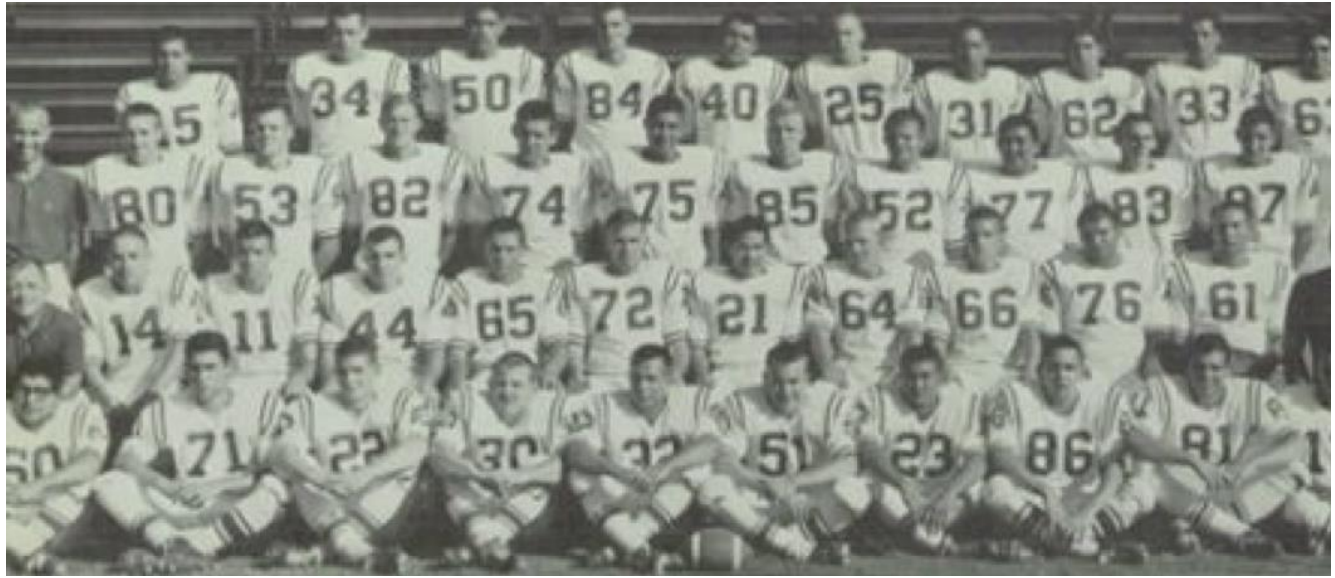


1963 - 6-3-0

CENTRAL SEQUOIA LEAGUE CHAMPIONS

Clovis	14-13	Reedley	27-13	<u>Valley Playoffs</u>
Tulare Union	12-31	Fowler	42-6	no Valley Playoffs
Shafter	20-21	Selma	7-26	
Dinuba	42-7	Kingsburg	45-13	
Exeter	24-0			

G.Angler, A.Aydelott, D.Bowlin, M.Clark, L.Deaver, P.Domoto, D.East, M.Fuentes, I.Galli, J.Garcia, J.Hackler, R.Harris, T.Hernandez, B.Holt, J.Knapp, J.Krum, F.Krum, A.Macias, J.Macias, R.Manfredi, C.Masaoka, D.Miller, R.Minor, C.Minter, G.Nakai, R.Nersesian, D.Olivares, R.Owens, K.Pena, K.Pennington, J.Quindt, G.Reed, J.Reynolds, F.Riojas, T.Scheidt, R.Snyder, J.Swinehart, G.Thompson, D.Vance, B.Vaughn, J.Westrick, J.Wilson  
Coach: J.R. BOONE, Dean Nicholson, Dean Philpott



1961 - 8-1-0

CENTRAL SEQUOIA LEAGUE CHAMPIONS

Clovis	32-7	Selma	13-6	<u>Valley Playoffs</u>
Roosevelt	6-14	Kingsburg	38-6	no Valley Playoffs
Exeter	26-19	Dinuba	27-6	
Reedley	33-12	Wasco	26-12	
Fowler	7-0			

T.Anderson, S.Barnes, B.Boragno, V.Bretz, D.Cooper, E.Cox, W.Deaver, P.Duran, D.East, H.East, M.Flores, M.Gavalton, B.Goldbeck, C.Gonzales, J.Ishimoto, C.Lopez, F.Maglio, A. Macias A.Masaoka, C.Masaoka, J.McCollum, J.Martinez, S.Martinez, W.Martinez, C.Merker, O.Munoz, J.Nielsen, J.Nilmeier, L.Owens, G.Pope, F.Pruess, D.Robson, D.Ruiz, J.Schedler, T.Schroeder, E.Shelton, J.Showalter, M.Smith, M.Sonkson, M.Sylva, R.Tinoco, T.Tyner, A.Valverde, R.Valverde, J.Waugh, J.Westrick, J.Wilson  
Coach: J.R. BOONE, Dean Nicholson, Dean Philpott, Dick Baldwin





1960 – 7-2-0

CENTRAL SEQUOIA LEAGUE Co-CHAMPIONS

Central	0-6	Selma	27-7	<u>Valley Playoffs</u>
Clovis	21-0	Kingsburg	6-7	no Valley Playoffs
Central	27-12	Dinuba	28-6	
Reedley	25-0	Exeter	26-6	
Fowler	25-0			

J.Alvarado, T.Anderson, S.Barnes, B.Bean, J.Christie, J.Claiborne, R.Duran, H.East S.Fortner, B.gabrielson, Je Gibson, J.Gonzales, R.Gonzales T.Grainger, J.Hernandez, F.Hill, J.Hollenbeck, T.Jorgenson, A.Karle, K.Kister, K.Krum, T.Kumano, J.Lawson, C.Lopez, C.Martinez, J.Martinez, F.Maglio, R.Mata, J.McCollum, A.Masaoka, C.Masaoka, O.Munoz, J.Nielsen, J.Nilmeir, K.Nishimura, D.O'Hara, L.Owens, H.Provost, F.Pruess, J.Quindt, W.Roberts, C.Rasmussen, D.Ruiz, S.Ramirez, J.Rodriguez, R.Rodriguez, M.Smith, W.Sliger, E.Shelton, D.Simonian, M.Sonkson, B.Tonai, A.Valverde, J.Wilson, L.Westrick, K.Young.  
Coach: J.R. BOONE, Dean Nicholson, Bob Padilla



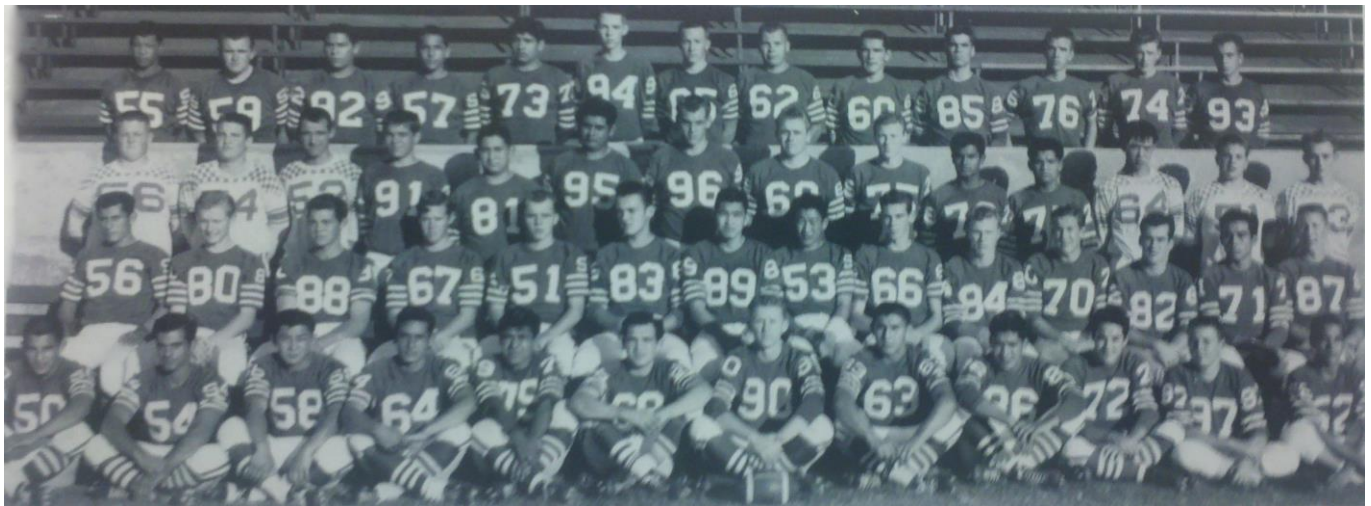
1959 – 8-0-0

Undefeated Season

CENTRAL SEQUOIA LEAGUE CHAMPIONS

Clovis	13-7	Kingsburg	27-20	<u>Valley Playoffs</u>
Corcoran	31-0	Dinuba	27-20	no Valley Playoffs
Fowler	31-0	Exeter	65-21	
Selma	6-0	Reedley	59-13	

B.Barnes, C.Caldera, N.Castro, T.Chaney, A.Coronado, B.Collins, R.Dodson, R.Deaver, R.Farmer, S.Fortner, Je Gibson, I.Gonzales, R.Gonzales, J.Hall, A.Hernandez, G.Hickman, T.Hickman, J.Hollenbeck, T.Jorgenson, B.Kandarian, K.Kister, B.Krum, J.Lowe, A.Masaoka, C.Martinez, M.Martinez, J.McCollum, B.Neal, K.Nishimura, D.O'Hara, L.Owens, D.Peargin, F.Pruess, S.Ramirez, J.Roberts, R.Rodriguez, D.Ruiz, L.Sasashima, A.Salgado, E.Salgado, L.Scrivner, G.Scheidt, J.Scheidt, W.Sliger, M.Smith, M.Sonksen, T.Tamura, R.Tinoco, M.Tonai, J.Velasquez, A.Valverde, C.Wallin  
Coach: J.R. BOONE, Dean Nicholson, Jack Tiftick

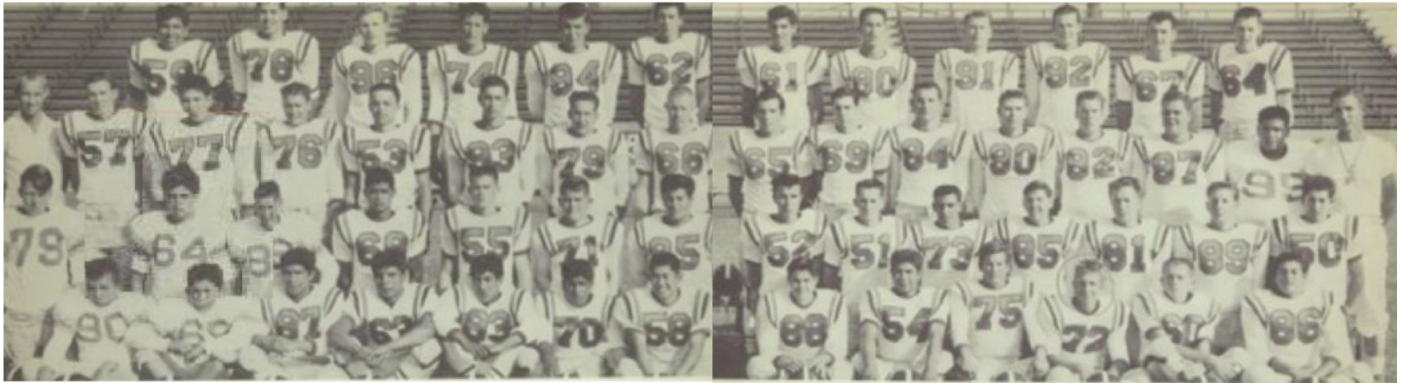




1956 – 9-1-0  
SEQUOIA DIVISION – VALLEY CHAMPIONS  
NORTH SEQUOIA LEAGUE Co-CHAMPIONS

Fowler	14-6	Reedley	33-60	<i>Valley Playoffs</i>	
Edison Tech	20-0	Clovis	27-8	Corcoran	40-6
Roosevelt	14-0	Selma	39-20		
SJ Memorial	45-24	Dinuba	20-19		
Shafter	33-24				

L.Barnes, D.Brooks, G.Bonds, N.Booth, C.Cade, D.Castro, T.Chaney, R.Coronado, R.Drath, C.Fox, B.Farnsworth, N.Fidalgo, J.Freeman, W.Garcia, B.Gibson, R.Googooian, G.Griffith, L.Hackett, D.Harris, A.Helzer, T.Hickman, T.Jones, R.Madrid, S.Martinez, R.Martinez, S.Mason, J.McCellen, L.Messer, R.Miller, J.Muro, S.Montelongo, A.Nation, T.Olson, D.Owens, P.Patrick, B.Pritchard, E.Reese, M.Ruiz, R.Rosenthal, H.Scharnick, D.Scheidt, R.Scott, J.Sedano, P.Sesate, J.Steinert, B.Stephens, A.Telles, T.Toni, P.Villaneuva, G.Zapeda  
Coach: RAY NEWMAN, Dean Nicholson



Valley Championship Tid-Bit:

Sanger was co-champion of the North Sequoia League with Clovis & Reedley. A coin flip by Principals of each school determined the team to advance to the playoffs. Mr. Booth of Sanger won & was awarded a plaque for "Flipper of the Year". Sanger went on to defeat Corcoran for the Valley Championship.



1955 – 8-1-0  
SEQUOIA DIVISION – VALLEY Championship Runner-up  
NORTH SEQUOIA LEAGUE CHAMPIONS

Fowler	13-7	Reedley	14-0	<i>Valley Playoffs</i>	
Edison Tech	12-6	Clovis	13-6	Shafter	13-25
Roosevelt	28-14	Selma	25-7		
SJ Memorial	12-6	Dinuba	32-14		

L.Barnes, D.Brooks, P.Bertelson, C.Cade, J.Cade, A.Caldera, A.Dadian, R.Davis, E.Deaver, R.Drath, C.Fox, N.Fidalgo, J.Freeman, W.Garcia, G.Gibbs, J.Gibson, R.Googooian, G.Griffith, C.Hansen, L.Hackett, B.Herron, C.Matthes, Ra Martinez, Ru Martinez, G.Mejica, E.Mills, J.Muro, F.Orozco, D.Phillips, W.Phillips, T.Pitts, B.Pritchard, C.Reed, E.Reese, M.Ruiz, G.Rodriquez, R.Rosenthal, S.Saroyan, F.Scharnick, D.Scheidt, R.Schneider, R.Scott, P.Sesate, R.Snedden, B.Stephens, B.Takeda, A.Tellez, T.Tonai, J.Townsend, P.Villanueva  
Coaches: RAY NEWMAN, Dean Nicholson

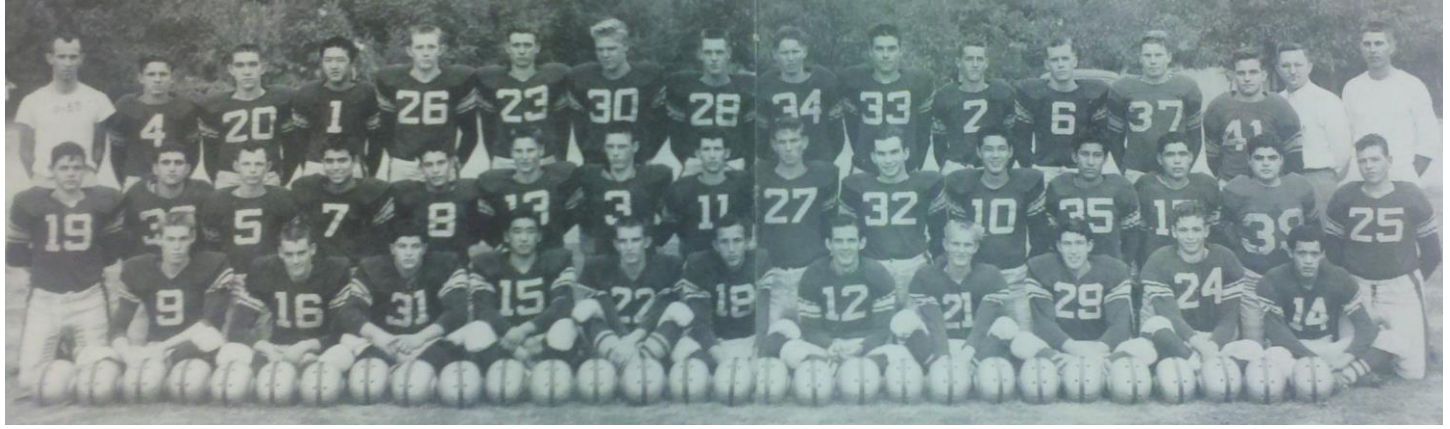




1952 – 9-1-0  
SEQUOIA DIVISION – VALLEY Championship Runner-up  
NORTH SEQUOIA LEAGUE CHAMPIONS

Fowler	39-0	SJ Memorial	27-0	<u>Valley Playoffs</u>	
Porterville	20-13	Reedley	20-13	Wasco	13-14
Madera	19-6	Dos Palos	20-19		
Washington Union	39-12	Selma	45-6		
Clovis	12-6				

C.Anderson, W.Ashmore, G.Barnes, A.Bentley, B.Boone, D.Brown, R.Caldera, F.Casey, A.Carrillo, T.Cornelius, R.Cosgrave, G.Cowdrey, W.DeCanio, R.Denton, L.Dixon, J.Flemming, T.Flores, G.Gibson, S.Gomez, J.Handjian, C.Kasparian, B.Koda, H.Kondo, E.Mendoza, N.Papac, K.Pope, B.Presley, J.Rocha, G.Rodriguez, C.Scharnick, R.Scheidt, T.Scholar, D.Sorensen, H.Vasquez, D.Vig, D.Williams, G.Williams, J.Yakligian  
Coach: CLAIRE SLAUGHTER, Dean Nicholson, Chester Duckhorn



1951 – 8-2-0  
SEQUOIA DIVISION – VALLEY CHAMPIONS  
NORTH SEQUOIA LEAGUE CHAMPIONS  
*Sanger High School Athletic Hall of Fame – 2020 Inductees*

Fowler	0-26	Reedley	26-13	<u>Valley Playoffs</u>	
Edison Tech	26-0	Dos Palos	19-6	Coalinga	26-20
Porterville	7-19	Selma	46-0		
Washington Union	25-0	Clovis	34-6		
SJ Memorial	7-6				

C.Anderson, R.Avalos, D.Barnes, G.Barnes, B.Bedoian, A.Bentley, C.Davis, L.Dickson, R.Egbart, J.Fleming, B.Flores, G.Green, Y.Gomez, D.Hightower, N.Hilderbrand, E.Jones, D.Justice, B.Koda, V.Kondo, A.McElroy, D.Moya, K.Ogen, R.Olson, N.Papac, B.Presley, J.Rivera, J.Rocha, C.Scharnick, K.Stacks, H.Vasquez, D.Vig, D.Williams, W.Wallace  
Coach: CLARE SLAUGHTER, Dean Nicholson, Louis Papac



Valley Championship Tid-Bit:

Sanger won the school's first Valley Championship by scoring the winning points on a touchdown pass (play called "Perez Pass") from Nick Papac to Gene Green with only 6 seconds remaining in the game.



**1944 – 6-0-0**  
**Undefeated Season**  
**SEQUOIA LEAGUE CHAMPIONS**

Lemoore	26-0	Fowler	19-13	<u>Valley Playoffs</u>
Kingsburg	13-0	Selma	14-12	no Valley Playoffs
Reedley	13-12	Washington Union	32-0	

N.Adolph, J.Allyn, D.Baird, J.Barsotti, B.Bosserman, E.Breham, R.Christner, B.Curtis, C.Dadian, H.Ecker, C.Floth, L.Gibson, G.Gonzales, D.Hall, N.Harolian, B.Harryman, D.Heintz, R.Hernandez, D.Holland, D.Jacquish, B.Kaprielian, L.Madsen, E.Metzler, J.Moore, L.Oliver, J.Palsgaard, L.Papac, W.Parmalee, M.Petersen, G.Phillips, K.Phillips, W.Powell, B.Rose, C.Sarkesian, D.Schmall, H.Schmidt, H.Shahbazian, E.Shepard, B.Shults, R.Scott, A.Simon, B.Shults, R.Scott, A.Simon, B.Smeiser, A.Torosian, J.Vermillion, L.Woods, B.Young  
Coach: HUNTLEY DAYTON



**1935 – 3-3-1**  
**FRESNO COUNTY DIVISION 2 LEAGUE CHAMPIONS**

Roosevelt	7-13	Lemoore	12-12	<u>Valley Playoffs</u>
Fresno Tech	0-6	Selma	27-0	Fresno 6-26
Reedley	2-0	Kingsburg	13-0	

D.Abbott, J.All, L.Aprile, P.Aprile, R.Barthuli, S.Blueian, J.Brandon, B.Brumbaugh, L.Caldwell, V.Cotner, C.Crass, A.Curtis, D.Dunkel, M.Herzog, R.Imrie, B.Johnson, J.Katzemayer, W.Kincaid, V.Krikorian, A.Krum, F.Louban, C.Lowe, J.Linenbach, T.Lucas, M.Mardirosian, P.Merlo, Q.Merlo, C.Moltzen, K.Mori, J.Nakamura, P.Nielsen, S.Nilmeyer, M.Parvanian, V.Poohigian, D.Price, F.Rhodes, S.Sahorian, J.Schmidt, K.Severian, H.Shidan, J.Stewart, K.Tamada, K.Tange, N.Torigian, D.Vukson, B.Yamamoto, G.Yamamoto  
Coach: HUNTLEY DAYTON, L.E. Dow, I.D.Mayers





1934 – 5-2-0

SAN JOAQUIN DIVISION 2 LEAGUE CHAMPIONS

Lemoore	6-8	Lemoore	14-0	<u>Valley Playoffs</u>	
Reedley	14-0	Reedley	18-12	Fresno	0-26
Selma	33-0	Selma	33-0		

P.Aprile, G.Baird, W.Bechtold, D.Brandon, J.Branson, A.Clark, I.Concho, V.Cortner, C.Crass, A.Curtis, M.Herzog, E.Johnson, A.Kandarian, J.Katzemayer, W.Kincaid, R.Kramer, F.Krum, J.Linenbach, B.Lencioni, G.Locke, F.Loubban, T.Lucas, P.Merlo, B.Mitchell, J.Nakamura, S.Nilmeyer, A.Nilsen, G.Nishioki, B.Ohama, D.Parvanian, M.Parvanian, A.Picchi, B.Poochigian, F.Rhodes, R.Rhodes, G.Sahorian, D.Scheidt, O.Scott, A.Shahbazian, Z.Shahbazian, A.Steinbauer, E.Stratton, T.Verhines, S.Yamamoto, C.Zallian.  
Coach: HUNTLEY DAYTON, L.E. Dow

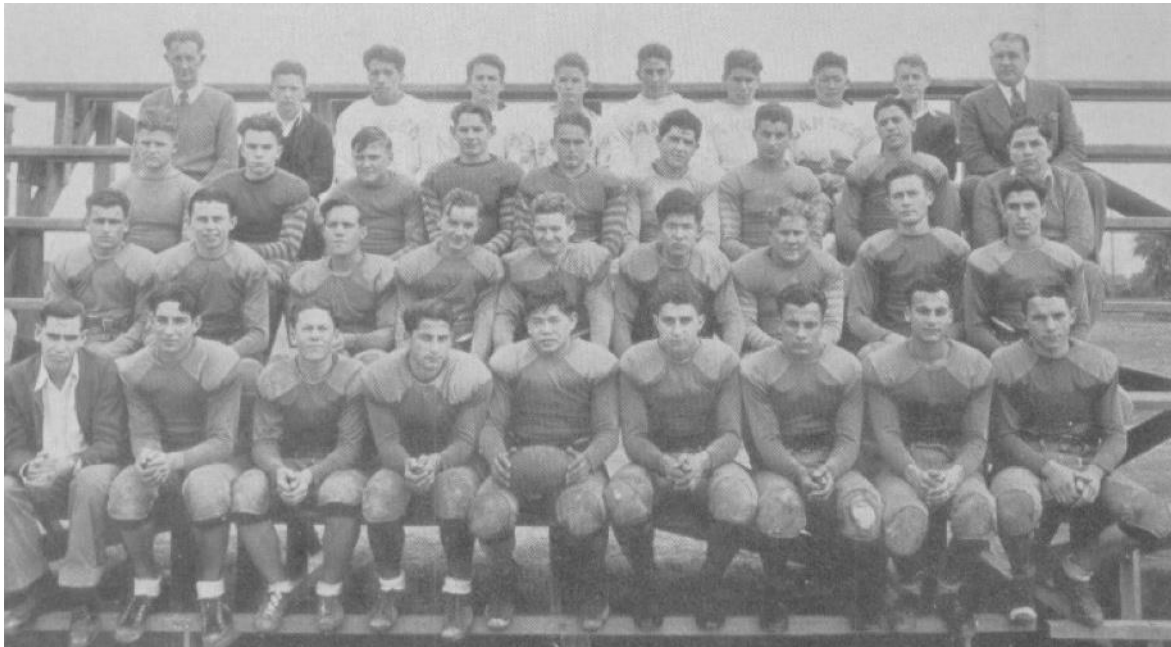


1933 – 5-1-0

FRESNO COUNTY DIVISION 2 LEAGUE CHAMPIONS

Fresno Tech	28-0	Lemoore	6-0	<u>Valley Playoffs</u>	
Selma	7-0	Reedley	14-7	Fresno	7-19
Kingsburg	20-6				

G.Baird, W.Bechtold, D.Brandon, J.Brandon, A.Bruce, J.Bruce, A.Clark, I.Concho, C.Crass, E.Crutchfield, D.Domoto, J.Katzemayer, W.Kincaid, F.Krum, B.Lencioni, T.Lucas, A.Margosian, C.Margosian, D.McCann, F.McClurg, A.Missakian, J.Nakamura, B.Ohama, D.Parvanian, M.Parvanian, J.Picchi, J.Poole, H.Sarabian, Z.Shahbazian, A.Steinbauer, V.Yost, R.Zadayan, C.Zallian  
Coach: HUNTLEY DAYTON





1932 – 6-1-0

FRESNO COUNTY DIVISION 2 LEAGUE CHAMPIONS

Fowler	(w)	Lemoore	7-6	<u>Valley Playoffs</u>
Edison Tech	19-0	Kingsburg	17-0	Fresno 6-18
Reedley	7-0	Selma	14-13	

P.Aprile, E.Babigian, G.Baird, C.Barthuli, W.Bechtold, J.Bruce, C.Carr, E.Crutchfield, A.Deciero, D.Domoto, W.Hanke, J.Heizman, F.Henderson, E.Hosepian, N.Katzemayer, H.Kerry, B.Krum, B.Lencioni, D.McCann, F.McClurg, A.Margosian, C.Margosian, G.Nishioki, B.Ohama, D.Parvanian, M.Parvanian, J.Poole, H.Sarabian, B.Savage, S.Speake, E.Stratton, H.Thompson, R.Thompson, R.Zadoyan, C.Zallian  
Coach: HUNTLEY DAYTON



1924 – 5-4-1

FRESNO COUNTY DIVISION 2 LEAGUE CHAMPIONS

Parlier	19-0	Fresno	6-0	<u>Valley Playoffs</u>
Fresno Tech	12-0	Selma	6-2	Lemoore 0-33
Reedley	12-6	Dinuba	6-6	
Fowler	0-6	Dinuba	0-10	
		Alumni	6-7	

Henry Beiden, Pete Beiden, John Boragno, Ken Brown, C.Johnson, Robert Kent, Leo Kibley, Pete Kraus, Chester McHaley, Les McHaley, Aram Memleketian, Dee Moglia, Bill Neely, Roy Nelson, Alfred Olson, Ed Paloutzian, Jerome Pimental, Elmer Sullivan, Louie Thompson, Byron Tipton, Phil Tombs  
Coach: FRANK TRINE



1909 – 2-1-1

FRESNO COUNTY LEAGUE Co-CHAMPIONS

Town Team	20-0	<u>Valley Playoffs</u>	
Fresno	5-0	Selma	0-19
Selma	0-0		

(team roster unavailable)  
Coach : Estey Walton



(Photo Unavailable)



**Reedley vs Sanger – 100<sup>th</sup> Game**



**Honorary Team Captains**

**Sanger Wins  
65**

**Reedley Wins  
33**

**Ties  
2**

<u>Year</u>	<u>Score</u>
2013	42-7
2012	42-0
2011	21-7
2010	13-7
2009	16-6
2008	47-7
2006	63-27
2005	45-14
2004	37-21
2003	35-3 (Playoffs)
2002	21-7
2000	15-8
1999	44-13 (Playoffs)
1999	21-0
1998	46-6
1997	28-12
1996	34-7
1995	16-7
1994	31-7
1992	17-9
1991	40-0
1990	20-10
1986	7-6
1985	15-7
1982	13-7
1980	14-6
1979	10-6
1976	28-7
1975	13-3
1968	35-7
1967	40-0
1966	19-6

<u>Year</u>	<u>Score</u>
1965	20-14
1964	13-0
1963	27-13
1961	33-12
1960	25-0
1959	59-13
1955	14-0
1952	20-13
1951	26-13
1950	19-12
1949	25-19
1948	20-13
1946	13-0
1944	13-12
1943	6-0
1941	7-0
1940	32-0
1939	17-0
1938	19-0
1936	32-0
1935	2-0
1934	14-0 & 18-12
1933	14-7
1932	7-0
1930	7-0
1928	6-0
1927	19-6
1926	2-0
1925	44-0
1924	12-6
1919	12-6
1915	12-0

<u>Year</u>	<u>Score</u>
2007	26-10
2003	21-19
2001	26-6
1993	12-7
1989	14-6
1988	24-14
1987	27-7
1984	35-14
1983	20-9
1981	18-14
1978	20-6
1977	34-13
1973	14-6
1972	34-12
1971	26-6
1970	16-8
1969	16-8
1958	36-6
1957	26-0
1956	60-33
1954	7-6
1953	7-6
1947	18-0
1945	6-0
1942	14-0
1937	13-7
1929	19-0
1923	13-0
1922	6-32
1921	27-6
1920	32-0 & 66-0
1919	20-14

<u>Year</u>	<u>Score</u>
1974	7-7
1962	6-6

The first recorded game in this series was played in 1915 and has been played every year since 1919, except 1931.

The teams played two games in five seasons: 1919, 1920, 1934, 1999 & 2003.

Honorary Team Captains for coin-toss of the 100<sup>th</sup> game in Reedley on October 4, 2013:

Sanger

- Jim Merlo 1968
- Ted Torosian 1976
- Alex Campos 1983
- Peter Hingano 1999
- Brent Weber 2003
- Coach Chuck Shidan 1974

Reedley

- Larry Iwasaki 1956
  - Ron Siebert 1970
  - Daryl Bacon 1973
  - Danny Cortez 1984
  - Mike Gregory 1996
  - Coach Mike Vogt 1976
- Honored for 41 years as Sanger statistician & announcer



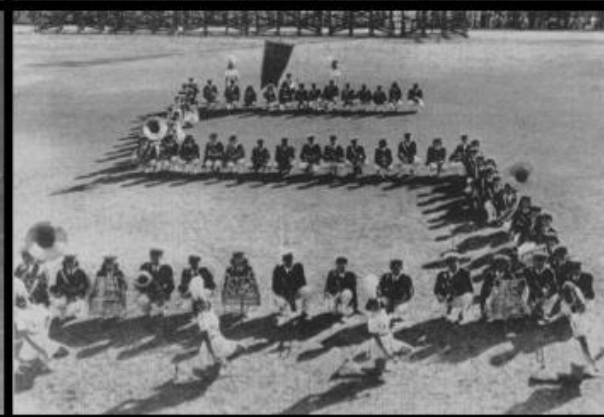
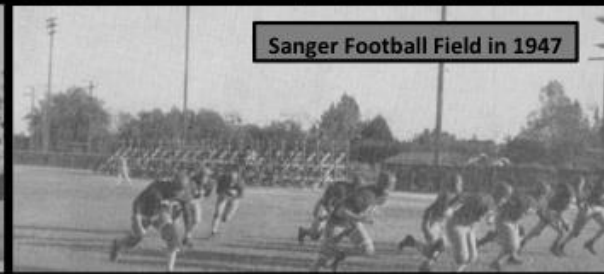
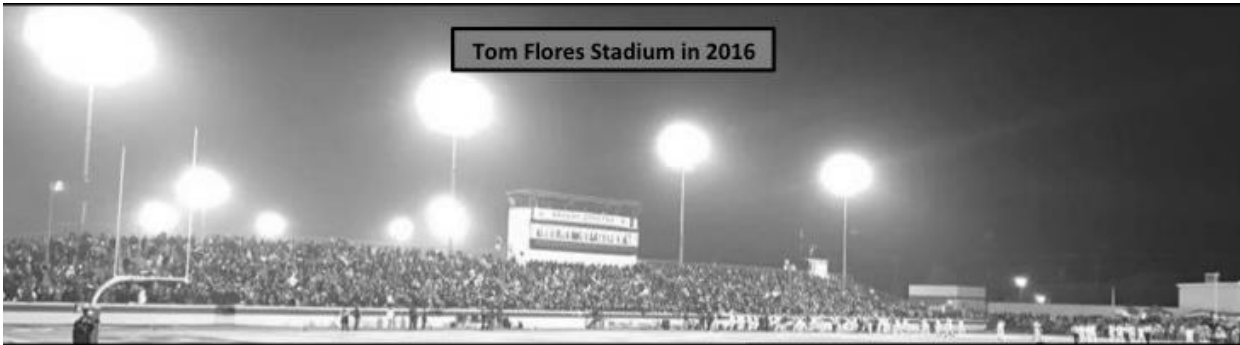
Ron Blackwood

(Series Suspended after 2019)  
\* 71-33-2 thru 2019 season





### Sanger Football Stadium





### Football Stadium History

- \* Original 'Football Field' located at south end of the original school site by "Q" Street
- \* 1941 – Lights added to the 'Football Field'
- \* 1956 – 'Sanger Stadium' built by the community (seating capacity 5,000)
- \* 1956 – Hosted 1<sup>st</sup> Valley Championship Game (Sequoia Division – 40-6 win vs Corcoran)
- \* 1968 – Press Box built at 'Sanger Stadium'
- \* 1976 – New Lights & seating (capacity increased to 7,000 with end zone bleachers)
- \* 1979 – New Press Box dedicated to Dr. Marvin Call (team physician for 24 years)
- \* 1981 – 'Sanger Stadium' renamed 'Tom Flores Stadium'
- \* 1993 – New Lights installed at 'Tom Flores Stadium'
- \* 2016 – Hosted 1<sup>st</sup> State Playoff Game (D2A NorCal Regional Championship – 36-49 loss vs Serra)
- \* 2021 – Hosted 67<sup>th</sup> City-County All-Star Game (County Coach Jorge Peña – 35-0 win vs City)

### Coaching History – Sanger Football Stadium/Field

#### Tom Flores Stadium

<u>Coach</u>	<u>Years</u>	<u>Seasons</u>	<u>Record</u>	<u>Winning %</u>
<u>Total</u>	<u>42</u>	<u>1981 to 2022</u>	<u>270-198-1</u>	<u>57.6%</u>
Matt Logue	1	2022	4-3-0	57.1%
Jorge Peña	5	2017 to 2021	31-18-0	63.3%
Chuck Shidan	27	1990 to 2016	203-119-0	63.0%
Tosh Nita	4	1986 to 1989	9-31-0	22.5%
Roy Tanimoto	4	1982 to 1985	21-19-1	51.2%
Fred Ratzlaff	1	1981	2-8-0	20.0%

#### Sanger Stadium

<u>Coach</u>	<u>Years</u>	<u>Seasons</u>	<u>Record</u>	<u>Winning %</u>
<u>Total</u>	<u>25</u>	<u>1956 to 1980</u>	<u>152-82-11</u>	<u>62.0%</u>
Fred Ratzlaff	1	1980	4-5-0	44.4%
Gary Scott	5	1975 to 1979	34-16-4	60.7%
Buck Martin	5	1970 to 1974	28-20-2	56.0%
John Perkins	4	1966 to 1969	27-11-3	65.9%
J.R. Boone	7	1959 to 1965	42-18-2	67.7%
Garrett Arbelbide	2	1957 to 1958	8-11-0	42.1%
Ray Newman	1	1956	9-1-0	90.0%

#### Sanger Football Field

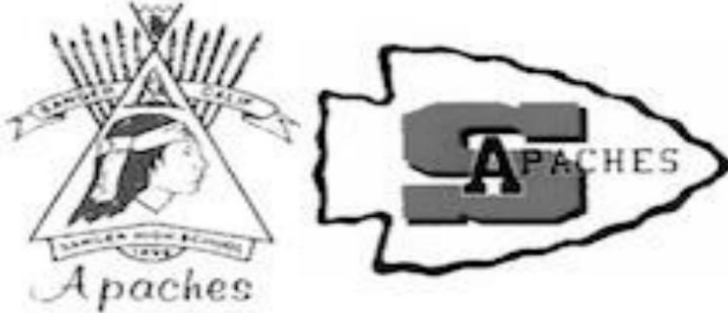
<u>Coach</u>	<u>Years</u>	<u>Seasons</u>	<u>Record</u>	<u>Winning %</u>
<u>Total</u>	<u>57</u>	<u>1900 to 1955</u>	<u>146-139-30</u>	<u>46.3%</u>
Ray Newman	1	1955	8-1-0	90.0%
Clare Slaughter	8	1948 to 1954	44-19-9	61.1%
Everand Jones	2	1946 to 1947	2-13-0	13.3%
Huntley Dayton	20	1926 to 1945	65-59-9	48.9%
Frank Trine	2	1924 to 1925	10-6-2	55.6%
S.T. Glass	1	1923	1-5-0	16.7%
E.M. Palmer	1	1922	1-5-1	14.3%
J.W. Jones	2	1920 to 1921	2-14-0	12.5%
K.M. Barager	1	1919	2-4-0	33.3%
unknown	8	1911 to 1918	1-2-0	33.3%
Kinnee	1	1910	3-2-1	50.0%
Estey Walton	1	1909	2-1-1	50.0%
unknown	9	1900 to 1908	5-8-7	40.0%



### History of All Sanger Apache Seasons

Sanger Unified School District split into 2 separate high schools & teams in 2022

Sanger High Apaches  
established 1899



Sanger West High Hornets  
established 2022



2022 – Logue  
6-6-0

Sanger West	58-0
Clovis	7-14
Clovis East	7-49
Lemoore	18-42
Centennial	26-35
+J Garza	24-13
+Edison	28-27
+Madera	42-3
+Bullard	42-6
+SJ Memorial	21-56
**Paso Robles	21-00
**CV Christian	0-20

2021 – PEÑA  
5-6-0

Clovis	12-35
Roosevelt	27-7
Lemoore	13-14 ot
RF Kennedy	28-14
Clovis East	14-10
+Edison	28-13
+Madera	35-7
+Bullard	21-42
Washington Union	14-21
+SJ Memorial	0-35
**Frontier	7-28

2021 Spring – PEÑA  
4-1-0

Clovis	Cancelled
Fresno	Cancelled
Clovis East	Cancelled
Acalanes	Cancelled
+Madera South	Cancelled
Kingsburg	6-7
+Bullard	14-6
+Edison	34-0
+Madera	35-12
+SJ Memorial	28-21

# 2020 Season delayed by Covid-19 Pandemic

2019 – PEÑA  
7-4-0

Reedley	49-6
Hanford	31-38
Clovis East	21-14
Lemoore	41-22
Paso Robles	42-14
+Madera	59-21
+Bullard	15-29
+Madera South	42-0
+Edison	38-28
+SJ Memorial	28-31
**Dinuba	14-28

2018 – PEÑA  
7-4-0

Reedley	45-0
Hanford	48-28
Clovis East	8-14
Lemoore	49-41
Paso Robles	27-24
+Madera	36-33
+Bullard	38-36
+Madera South	63-19
+Edison	21-43
+SJ Memorial	25-41
**Arroyo Grande	10-59

2017 – PEÑA  
8-3-0

Fresno	42-0
Hanford	42-0
Clovis East	34-7
Lemoore	40-38 2ot
Reedley	51-7
+Bullard	6-27
+Madera South	40-3
+Edison	27-20
+Madera	35-14
+SJ Memorial	14-35
**Bullard	14-21

2016 – SHIDAN  
13-1-0

Fresno	28-21
Hanford	31-14
Clovis East	55-13
Lemoore	55-14
Reedley	48-0
+Bullard	21-19
+Madera South	49-14
+Edison	28-18
+Madera	53-14
+SJ Memorial	56-21
**Dinuba	42-6
**Sunnyside	56-9
***Ridgeview	20-10
XSerra	36-49

State D2 #9 Final Rank  
Valley #3 Final Rank

Valley Champion

League Champion

2015 – SHIDAN  
10-2-0

Redwood	28-7
Hoover	34-6
Clovis East	32-15
Lemoore	19-21
Reedley	34-7
+Madera South	35-21
+Edison	23-6
+Madera	35-10
+Bullard	21-14
+SJ Memorial	42-17
**Garces	13-10
**Lemoore	5-13

State D2 Hon Mention  
Valley #10 Final Rank

League & Valley Champion

+ league game  
\*\* playoff game

\*\*\* Valley Championship game

X California State Playoff game



2014 – SHIDAN 8-4-0	
Redwood	23-27
Hoover	50-12
Clovis East	37-34
Lemoore	22-27
Reedley	34-0
+Madera South	41-14
+Edison	15-14
+Madera	38-0
+Bullard	17-20
+SJ Memorial	24-3
**SJ Memorial	49-26
**Ridgeview	23-30

2013 – SHIDAN 8-4-0	
Sunnyside	24-20
Hoover	49-6
Mt. Whitney	37-7
Lemoore	21-42
Reedley	42-7
+Edison	7-25
+Madera	38-14
+Bullard	12-14
+Madera South	48-12
+SJ Memorial	40-13
**Redwood	7-0
**El Diamante	17-21

2012 – SHIDAN 10-3-0	
Sunnyside	20-17
Hoover	28-7
Mt. Whitney	17-49
Lemoore	22-20
Reedley	42-0
+Edison	35-29
+Madera	45-37
+Bullard	7-17
+Madera South	42-7
+SJ Memorial	28-0
**Redwood	17-14
**West (Bkfd)	41-7
***Garces	24-49

2011 – SHIDAN 4-7-0	
Hoover	34-28
Mt Whitney	21-48
Lemoore	20-35
Clovis	21-56
Reedley	21-7
+SJ Memorial	14-30
+Edison	8-40
+Bullard	13-28
+Sunnyside	14-10
+Madera	13-12
**Redwood	41-42 2ot

2010 – SHIDAN 5-6-0	
Hoover	28-6
Mt. Whitney	28-7
Lemoore	20-12
Clovis	7-10
Reedley	13-7
+SJ Memorial	13-24
+Edison	29-30
+Bullard	14-24
+Sunnyside	16-26
+Madera	48-7
**Lemoore	22-23

2009 – SHIDAN 6-6-0	
Buchanan	7-50
Sunnyside	31-14
Clovis East	0-35
Lemoore	17-14
Clovis	12-21
+Hoover	18-34
+Edison	21-19
+Bullard	14-20
+Clovis North	28-14
+Reedley	16-6
**West (Bkfd)	20-3
**Tulare Union	12-55

2008 – SHIDAN 7-6-0	
Buchanan	16-30
Sunnyside	27-14
Clovis East	14-31
Lemoore	41-7
Clovis	31-7
Atascadero	7-20
+Hoover	54-20
+Edison	26-30
+Bullard	21-28
+Reedley	47-7
**Sunnyside	47-19
**North (Bkfd)	40-21
***Tulare Union	20-38

2007 – SHIDAN 7-4-0	
Sunnyside	32-29
Clovis East	13-20
Lemoore	17-14
Clovis	17-14
Fresno	35-8
+Edison	8-45
McLane	38-12
+Hoover	27-17
+Bullard	30-22
+Reedley	10-26
**Buchanan	7-29

2006 – SHIDAN 8-4-0	
Sunnyside	27-3
Clovis East	6-21
Lemoore	6-7
Clovis	21-31
Fresno	41-13
+Edison	28-24
McLane	45-7
+Hoover	27-25
+Bullard	21-14
+Reedley	63-27
**Buchanan	35-34 3ot
**Clovis West	7-35

2005 – SHIDAN 10-2-0	
Buchanan	26-20
Porterville	42-19
Liberty (Bkfd)	3-0
Clovis	20-3
Fresno	50-6
Sunnyside	28-0
+Hoover	52-22
+Bullard	14-31
+Edison	35-14
+Reedley	45-14
**Central	29-0
**Bakersfield	22-34

2004 – SHIDAN 6-5-0	
Buchanan	14-27
Porterville	22-7
Liberty (Bkfd)	14-21
Clovis	14-21
Fresno	43-21
Sunnyside	20-0
+Hoover	33-16
+Bullard	26-42
+Edison	14-7
+Reedley	37-21
**Centennial	14-17

2003 – SHIDAN 11-2-0	
<b>Reedley</b>	<b>19-21</b>
<b>Hoover</b>	<b>13-7</b>
<b>Sunnyside</b>	<b>53-24</b>
<b>Clovis East</b>	<b>14-21</b>
<b>+Lemoore</b>	<b>56-42</b>
<b>+Hanford West</b>	<b>32-7</b>
<b>+Redwood</b>	<b>21-10</b>
<b>+Hanford</b>	<b>35-7</b>
<b>+Mt. Whitney</b>	<b>41-20</b>
<b>+Golden West (Vis)</b>	<b>58-21</b>
<b>**Reedley</b>	<b>35-3</b>
<b>**Redwood</b>	<b>26-21 ot</b>
<b>***Centennial</b>	<b>23-7</b>

2002 – SHIDAN 10-2-0	
Reedley	21-7
Hoover	29-39
Sunnyside	37-20
Clovis East	17-0
+Lemoore	34-14
+Hanford West	38-20
+Redwood	21-19
+Hanford	35-7
+Mt Whitney	20-19
+Golden West (Vis)	27-0
**North (Bkfd)	21-9
***Centennial	20-21 ot

2001 – SHIDAN 10-3-0	
Reedley	6-26
Hoover	41-31
Sunnyside	34-12
Central	14-19
Selma	42-16
+Mt. Whitney	28-21
+Hanford	34-12
+Lemoore	41-20
+Redwood	14-3
+Golden West (Vis)	6-32
**East (Bkfd)	28-7
**Edison	26-25
***Centennial	20-3

2000 – SHIDAN 7-4-0	
Reedley	15-8
Hoover	26-7
Sunnyside	21-14
Central	0-14
Selma	27-7
+Mt Whitney	24-27
+Hanford	35-6
+Lemoore	18-14
+Redwood	14-0
+Golden West (Vis)	12-27
**Centennial	6-9

**State D2 #9 Final Rank  
Valley #3 Final Rank**

**State D2 #10 Final Rank**

1999 – SHIDAN 9-4-0	
Reedley	21-0
Hoover	43-8
Golden West (Vis)	7-17
Fresno	42-20
Selma	54-0
+Clovis	13-34
+Clovis West	21-49
+Madera	49-21
+Buchanan	25-15
+Central	43-12
**Reedley	44-13
**East (Bkfd)	47-17
***Tulare Union	35-45

1998 – SHIDAN 11-2-0	
Reedley	46-6
Hoover	30-16
Golden West (Vis)	41-30
Fresno	44-8
Selma	55-0
+Clovis	23-38
+Clovis West	0-38
+Madera	33-18
+Buchanan	37-7
+Central	65-27
**South (Bkfd)	35-10
**East (Bkfd)	52-21
***Edison	35-28

1997 – SHIDAN 8-4-0	
Reedley	28-12
Hoover	60-39
Fresno	56-6
Roosevelt	52-0
Selma	17-13
+Clovis	21-48
+Clovis West	7-28
+Madera	21-12
+Buchanan	20-39
+Central	24-6
**Tulare Union	35-33
**Centennial	9-16

1996 – SHIDAN 7-4-0	
Reedley	34-7
Hoover	52-21
Fresno	41-12
Roosevelt	26-6
Selma	32-14
+Clovis	24-36
+Clovis West	28-21
+Madera	48-17
+Buchanan	0-13
+Central	28-30
**Golden West (Vis)	12-13

1995 – SHIDAN 5-5-0	
Reedley	16-7
Central	42-7
Fresno	23-24
Madera	23-6
Clovis West	21-22
Roosevelt	46-0
Clovis	21-37
Buchanan	0-42
McLane	38-49
Hoover	35-27

1994 – SHIDAN 3-7-0	
Reedley	31-7
Central	14-42
Fresno	31-34
Madera	28-46
Clovis West	17-28
Roosevelt	45-7
Clovis	26-37
Buchanan	13-20
McLane	14-13
Hoover	19-23

1993 – SHIDAN 3-7-0	
Reedley	7-12
Hoover	0-29
McLane	35-12
Clovis West	13-42
Edison	21-6
Bullard	8-28
Clovis	7-41
Madera	19-21
Roosevelt	21-13
Fresno	6-15

1992 – SHIDAN 7-3-0	
Reedley	17-9
Fresno	14-13
Hoover	21-17
McLane	31-19
Clovis West	10-14
Edison	29-12
Bullard	3-13
Clovis	7-27
Madera	23-13
Roosevelt	28-18

1991 – SHIDAN 8-2-0	
Reedley	40-0
Fresno	27-6
Hoover	34-13
McLane	25-15
Clovis West	14-17
Edison	35-7
Bullard	10-6
Clovis	0-42
Madera	20-7
Roosevelt	49-7

1990 – SHIDAN 3-7-0	
Reedley	20-10
Roosevelt	7-14
Fresno	34-22
Hoover	2-0 (f)
McLane	7-41
Clovis West	0-23
Edison	0-31
Bullard	12-14
Clovis	20-40
Madera	12-17

+ league game  
\*\* playoff game

\*\*\* Valley Championship game

League Champion

Valley Champion

League & Valley Champion



### 1989 – NITA 1-9-0

Reedley	6-14
+Roosevelt	13-27
+Fresno	22-15
+Hoover	7-40
+McLane	6-41
+Clovis West	0-48
+Edison	7-44
+Bullard	21-34
+Clovis	9-42
+Madera	14-34

### 1988 – NITA 3-7-0

Reedley	14-24
+Madera	13-37
+Roosevelt	22-21
+Fresno	22-21
+Hoover	32-38
+McLane	28-38
+Clovis West	15-48
+Edison	30-14
+Bullard	28-29
+Clovis	7-30

### 1987 – NITA 1-9-0

Reedley	7-27
+Madera	7-14
+Roosevelt	0-22
+Fresno	14-21
+Hoover	7-28
+McLane	14-15
+Clovis West	14-34
+Edison	14-34
+Bullard	17-6
+Clovis	0-14

### 1986 – NITA 4-6-0

Reedley	7-6
+Clovis	0-38
+Madera	6-21
+Roosevelt	0-12
+Fresno	28-6
+Hoover	28-17
+McLane	14-21
+Clovis West	22-21
+Edison	14-34
+Bullard	14-16

### 1985 – TANIMOTO 5-5-0

Reedley	15-7
+Clovis	13-36
+Madera	10-14
+Roosevelt	29-14
+Fresno	17-6
+Hoover	14-6
+McLane	31-13
+Clovis West	0-31
+Edison	27-43
+Bullard	7-35

### 1984 – TANIMOTO 1-8-1

Reedley	14-35
+Bullard	7-0
+Clovis	3-24
+Madera	0-28
+Roosevelt	9-34
+Fresno	0-14
+Hoover	25-25
+McLane	6-16
+Clovis West	0-21
+Edison	29-32

### 1983 – TANIMOTO 6-4-0

Reedley	9-20
+Bullard	37-13
+Clovis	13-7
+Madera	21-0
+Roosevelt	24-28
+Fresno	42-20
+Hoover	41-7
+McLane	16-14
+Clovis West	7-17
+Edison	14-16

### 1982 – TANIMOTO 8-2-1

Reedley	13-7
+Edison	21-16
+Bullard	7-20
+Clovis	14-13
+Madera	7-0
+Roosevelt	13-7
+Fresno	21-0
+Hoover	34-12
+McLane	26-0
+Clovis West	24-24
**Bakersfield	13-41

### 1981 – RATZLAFF 2-8-0

Reedley	14-18
+Edison	0-32
+Bullard	0-28
+Clovis	16-41
+Madera	0-28
+Roosevelt	20-27
+Fresno	27-3
+Hoover	0-14
+McLane	17-10
+Clovis West	13-24

### 1980 – RATZLAFF 4-5-0

Clovis	0-28
Highland (Bkfd)	26-0
Central	21-17
Tulare Union	0-28
+Mt. Whitney	14-34
+Lemoore	12-6
+Hanford	16-28
+Redwood	6-41
+Reedley	14-6

### 1979 – SCOTT 4-4-1

Clovis	0-9
Central	27-3
Washington Union	13-13
Tulare Union	14-13
+Mt. Whitney	10-20
+Lemoore	6-10
+Hanford	7-20
+Redwood	21-7
+Reedley	10-6

### 1978 – SCOTT 3-6-1

Clovis	6-24
McLane	14-31
Hoover	7-14
Monache	20-7
Tulare Union	6-6
+Redwood	20-18
+Mt. Whitney	0-35
+Lemoore	6-42
+Hanford	21-14
+Reedley	6-20

### 1977 – SCOTT 5-3-2

Clovis	7-7
McLane	25-14
Hoover	13-13
Monache	12-0
Tulare Union	26-12
+Hanford	27-8
+Redwood	14-16
+Mt. Whitney	6-48
+Lemoore	16-0
+Reedley	13-34

### 1976 – SCOTT 12-1-0

Clovis	7-14
Bullard	28-13
Hoover	13-0
Selma	46-0
Tulare Union	46-12
+Hanford	19-6
+Redwood	30-14
+Mt. Whitney	28-6
+Lemoore	28-8
+Reedley	28-7
**Arvin	32-6
**McLane	7-6
***Foothill	21-0

**State AAA #1 Final Rank  
Valley #1 Final Rank**

### 1975 – SCOTT 10-2-0

Clovis	6-40
Bullard	13-0
Hoover	28-12
Selma	14-0
Tulare Union	20-0
+Hanford	3-2
+Redwood	24-0
+Mt. Whitney	14-12
+Lemoore	16-10
+Reedley	13-3
**Bakersfield	17-0
**Edison	3-13

### 1974 – MARTIN 5-4-1

Clovis	0-29
Bullard	23-6
Hoover	15-7
Selma	27-7
Tulare Union	26-0
+Hanford	0-6
+Redwood	8-19
+Mt. Whitney	14-13
+Lemoore	0-12
+Reedley	7-7

### 1973 – MARTIN 5-4-1

Clovis	27-14
Bullard	6-29
Hoover	0-20
Selma	20-7
Tulare Union	14-8
+Hanford	34-12
+Redwood	7-14
+Mt. Whitney	21-13
+Lemoore	12-12
+Reedley	6-14

### 1972 – MARTIN 6-4-0

Clovis	7-6
Bullard	7-0
Hoover	13-14
Washington Union	7-13
Tulare Union	6-0
+Selma	9-0
+Redwood	21-20
+Mt. Whitney	8-22
+Lemoore	35-6
+Reedley	12-34

### 1971 – MARTIN 6-4-0

Clovis	18-43
Bullard	28-0
Hoover	22-14
Washington Union	18-20
Tulare Union	7-13
+Selma	13-0
+Redwood	40-17
+Mt. Whitney	18-0
+Lemoore	14-7
+Reedley	6-26

### 1970 – MARTIN 6-4-0

Clovis	0-19
Bullard	8-20
Mt. Whitney	14-7
Washington Union	0-14
Chowchilla	26-0
+Tulare Western	12-6#
+Corcoran	6-0
+Reedley	8-16
+Selma	16-7
+Lemoore	42-8

# leading @ half-time when called due to lighting failure

### 1969 – PERKINS 8-1-1

Clovis	0-0
Bullard	6-0
Mt. Whitney	12-0
Washington Union	37-7
Chowchilla	26-14
Tulare Western	29-7
Corcoran	14-0
Reedley	8-16
Selma	16-7
Lemoore	42-8

### 1968 – PERKINS 11-1-0

Clovis	7-12
Bullard	13-6
Sierra	34-6
Washington Union	27-6
Tulare Union	7-0
Corcoran	21-6
Reedley	35-7
Lemoore	21-0
Selma	28-0
Tulare Western	42-7
**Coalinga	20-0
***Garces	13-0

**Valley #2 Final Ranking**

### 1967 – PERKINS 6-4-0

Clovis	14-40
Bullard	13-33
Sierra	34-0
Washington Union	20-7
Tulare Union	20-13
Corcoran	32-7
Reedley	40-0
Lemoore	19-37
Selma	7-41
Tulare Western	26-6

### 1966 – PERKINS 3-4-2

Clovis	0-21
Chowchilla	6-39
Washington Union	19-19
Kingsburg	13-26
Corcoran	15-13
Reedley	19-6
Lemoore	13-28
Selma	14-13
Tulare Western	13-13

### 1965 – BOONE 7-2-0

Clovis	13-0
Chowchilla	20-6
Washington Union	39-6
Kingsburg	33-12
+Corcoran	40-7
+Reedley	20-14
+Lemoore	14-33
+Selma	12-27
+Tulare Western	40-6

+ league game  
\*\* playoff game

\*\*\* Valley Championship game

League Champion

Valley Champion

League & Valley Champion



### 1964 – BOONE 5-3-1

Clovis	0-7
Tulare Union	13-27
Kingsburg	46-14
Shafter	0-0
Dinuba	41-21
Exeter	18-6
Reedley	13-0
Fowler	35-0
Selma	6-27

### 1963 – BOONE 6-3-0

Clovis	14-13
Tulare Union	12-31
Shafter	20-21
Dinuba	42-7
Exeter	24-0
Reedley	27-13
Fowler	42-6
Selma	7-26
Kingsburg	45-13

### 1962 – BOONE 2-6-1

Clovis	0-6
Roosevelt	0-13
Wasco	6-7
Exeter	21-7
Reedley	6-6
Fowler	12-20
Selma	12-26
Kingsburg	0-6
Dinuba	21-7

### 1961 – BOONE 8-1-0

Clovis	32-7
Roosevelt	6-14
Exeter	26-19
Reedley	33-12
Fowler	7-0
Selma	13-6
Kingsburg	38-6
Dinuba	27-6
Wasco	26-12

### 1960 – BOONE 7-2-0

Caruthers	0-6
Clovis	21-0
Central	27-12
Reedley	25-0
Fowler	25-0
+Selma	27-7
+Kingsburg	6-7
+Dinuba	28-6
+Exeter	26-6

### 1959 – BOONE 8-0-0

Clovis	13-7
Corcoran	31-0
Fowler	31-0
Selma	6-0
Kingsburg	27-20
Dinuba	27-20
Exeter	65-21
Reedley	59-13

### 1958 – ARBELBIDE 4-5-0

Reedley	6-36
Roosevelt	0-27
Corcoran	0-39
Selma	6-27
Kingsburg	0-32
Dinuba	31-0
Exeter	26-7
Lemoore	24-0
Fowler	26-0

### 1957 – ARBELBIDE 4-6-0

Reedley	0-26
Roosevelt	6-26
SJ Memorial	12-6
Kingsburg	0-2
Dinuba	20-25
Chowchilla	21-13
Exeter	27-6
Lemoore	19-14
Fowler	21-46
Selma	6-19

### 1956 – NEWMAN 9-1-0

<b>Fowler</b>	<b>14-6</b>
<b>Edison Tech</b>	<b>20-0</b>
<b>Roosevelt</b>	<b>14-0</b>
<b>SJ Memorial</b>	<b>45-24</b>
<b>Shafter</b>	<b>33-24</b>
<b>+Reedley</b>	<b>33-60</b>
<b>+Clovis</b>	<b>27-8</b>
<b>+Selma</b>	<b>39-20</b>
<b>+Dinuba</b>	<b>20-19</b>
<b>***Corcoran</b>	<b>40-6</b>

### 1955 – NEWMAN 8-1-0

Fowler	13-7
Edison Tech	12-6
Roosevelt	28-14
+SJ Memorial	12-6
+Reedley	14-0
+Clovis	13-6
+Selma	25-7
+Dinuba	32-14
***Shafter	13-25

# 1<sup>st</sup> game in new stadium

### 1954 – SLAUGHTER 3-6-0

Fowler	12-0
Edison Tech	6-26
Tulare Union	6-40
Shafter	12-13
SJ Memorial	2-24
Reedley	6-7
Dos Palos	37-7
Selma	7-14
Clovis	19-2

### 1953 – SLAUGHTER 7-2-0

Fowler	21-7
Edison Tech	20-14
Tulare Union	12-6
Madera	13-6
Dos Palos	42-20
Selma	20-7
Clovis	46-0
SJ Memorial	20-27
Reedley	6-7

### 1952 – SLAUGHTER 9-1-0

Fowler	39-0
Porterville	20-13
Madera	19-6
Washington Union	39-12
Clovis	12-6
SJ Memorial	27-0
Reedley	20-13
Dos Palos	20-19
Selma	45-6
***Wasco	13-14

### 1951 – SLAUGHTER 8-2-0

<b>Fowler</b>	<b>0-26</b>
<b>Edison Tech</b>	<b>26-0</b>
<b>Porterville</b>	<b>7-19</b>
<b>Washington Union</b>	<b>25-0</b>
<b>SJ Memorial</b>	<b>7-6</b>
<b>Reedley</b>	<b>26-13</b>
<b>Dos Palos</b>	<b>19-6</b>
<b>Selma</b>	<b>46-0</b>
<b>Clovis</b>	<b>34-6</b>
<b>***Coalinga</b>	<b>26-20</b>

### 1950 – SLAUGHTER 7-2-0

SJ Memorial	0-7
Edison Tech	13-6
Kingsburg	45-6
Dos Palos	21-14
Lemoore	21-0
Selma	13-0
Fowler	13-21
Clovis	38-13
Reedley	19-12

### 1949 – SLAUGHTER 7-2-0

SJ Memorial	41-6
Woodlake	12-6
Kingsburg	18-0
Dos Palos	6-14
Lemoore	6-19
Selma	6-0
Fowler	12-0
Clovis	6-0
Reedley	25-19

### 1948 – SLAUGHTER 3-4-0

Hanford	0-12
Clovis	16-12
Lemoore	0-12
Fowler	7-25
Reedley	20-13
Selma	0-19
Kingsburg	12-6

### 1947 – JONES 0-8-0

Fresno Tech	0-31
Kingsburg	7-32
Dos Palos	0-27
Selma	0-28
Reedley	0-18
Fowler	0-13
Lemoore	6-13
Clovis	16-19

### 1946 – JONES 2-5-0

Clovis	6-21
Fowler	6-12
Lemoore	0-6
Washington Union	19-0
Kingsburg	0-21
Reedley	13-0
Selma	0-8

### 1945 – DAYTON 3-3-0

Lemoore	6-19
Kingsburg	6-14
Reedley	0-6
Fowler	14-0
Selma	13-0
Washington Union	27-7

### 1944 – DAYTON 6-0-0

Lemoore	26-0
Kingsburg	13-0
Reedley	13-12
Fowler	19-13
Selma	14-12
Washington Union	32-0

### 1943 – DAYTON 4-2-0

Washington Union	37-0
Lemoore	0-26
Selma	19-6
Kingsburg	20-7
Reedley	6-0
Fowler	0-12

### 1942 – DAYTON 2-2-1

Lemoore	0-13
Reedley	0-14
Fowler	7-7
Clovis	27-6
Selma	20-0

### 1941 – DAYTON 3-2-2

Hanford	6-6
Selma	0-13
Lemoore	19-0
Kingsburg	0-0
Washington Union	19-0
Reedley	7-0
Fowler	0-6

### 1940 – DAYTON 3-4-0

Hanford	0-6
Lemoore	9-0
Washington Union	7-0
Kingsburg	7-14
Selma	0-26
Fowler	0-13
Reedley	32-0

### 1939 – DAYTON 2-4-0

Reedley	17-0
Kingsburg	0-12
Lemoore	0-6
Fowler	7-0
Selma	0-20
Roosevelt	3-40

### 1938 – DAYTON 2-3-1

Reedley	19-0
Kingsburg	0-6
Fresno Tech	0-0
Lemoore	26-6
Selma	0-9
Roosevelt	0-40

### 1937 – DAYTON 2-6-1

Hanford	6-7
Madera	2-14
Roosevelt	7-18
Selma	6-13
Lemoore	7-6
Fresno Tech	7-13
Reedley	7-13
Kingsburg	7-7
Edison Tech	40-7

### 1936 – DAYTON 3-3-0

Lemoore	14-0
Selma	6-10
Kingsburg	0-12
Reedley	32-0
Hanford	13-6
Roosevelt	12-13

### 1935 – DAYTON 3-3-1

Roosevelt	7-13
Fresno Tech	0-6
Reedley	2-0
Lemoore	12-12
Selma	27-0
Kingsburg	13-0
**Fresno	6-26

+ league game  
\*\* playoff game

\*\*\* Valley Championship game

League Champion

Valley Champion

League & Valley Champion



1934 – DAYTON  
5-2-0

Lemoore	6-8
Reedley	14-0
Selma	33-0
Lemoore	14-0
Reedley	18-12
Selma	33-0
**Fresno	0-26

1933 – DAYTON  
5-1-0

Fresno Tech	28-0
Selma	7-0
Kingsburg	20-6
Lemoore	6-0
Reedley	14-7
**Fresno	7-19

1932 – DAYTON  
6-1-0

Reedley	7-0
Lemoore	7-6
Kingsburg	17-0
Selma	14-13
Fowler	(w)
Edison Tech	19-0
**Fresno	6-18

1931 – DAYTON  
4-5-0

Hanford	13-0
Hanford	6-7
Fowler	27-0
Kingsburg	0-6
Washington Union	7-0
Clovis	38-7
Lemoore	0-19
Selma	6-7
Alumni	7-12

1930 – DAYTON  
3-4-0

Clovis	6-0
Roosevelt	0-20
Edison Tech	0-13
Washington Union	9-6
Fowler	13-25
Reedley	7-0
Lemoore	0-19

1929 – DAYTON  
1-8-0

Roosevelt	6-19
Kingsburg	0-13
Fowler	0-18
Reedley	0-19
Selma	0-19
Parlier	7-0
Lemoore	0-7
Fresno Tech	0-13
Alumni	0-19

1928 – DAYTON  
2-5-0

Fresno Tech	6-12
Kingsburg	0-13
Fresno	(f) 0-2
Selma	8-6
Reedley	6-0
Lemoore	(f) 0-2
Alumni	0-6

1927 – DAYTON  
3-3-1

Kingsburg	0-0
Fresno Tech	7-27
Reedley	19-6
Lemoore	6-7
Fresno	18-0
Selma	6-7
Alumni	12-0

1926 – DAYTON  
5-2-1

Fresno	12-0
Lemoore	0-33
Reedley	2-0
Fresno Tech	45-6
Selma	6-18
Madera	0-0
Parlier	12-0
Alumni	7-0

1925 – TRINE  
6-3-1

Reedley	44-0
Lemoore	0-0
Fresno	0-21
Fresno Tech	31-0
Fowler	58-0
Selma	13-0
Lemoore	0-33
Taft	31-0
FSC Goofs	6-14
Alumni	36-6

1924 – TRINE  
5-4-1

Parlier	19-0
Fresno Tech	12-0
Reedley	12-6
Fowler	0-6
Fresno	6-0
Selma	6-2
Dinuba	6-6
Dinuba	0-10
Alumni	6-7
**Lemoore	0-33

1923 – GLASS  
1-5-0

Reedley	0-13
Selma	6-7
Fresno Tech	0-24
Fresno	0-19
Fowler	0-2
Orosi	6-0

1922 – PALMER  
1-5-1

Selma	0-2(f)
Reedley	6-32
Hanford	0-0
Fowler	20-13
Fresno	7-42
Fresno Tech	6-14
Alumni	6-38

1921 – JONES  
2-6-0

Selma	0-60
Reedley	6-27
Hanford	0-78
Fresno Tech	19-0
Fresno	0-47
Madera	19-6
Fowler	0-7
Dinuba	0-60

1920 – JONES  
0-8-0

Reedley	0-32
Selma	0-29
Selma	0-129
Reedley	0-66
Fresno	0-74
Madera	0-14
Fowler	6-39
Hanford	0-13

1919 – BARAGER  
2-4-0

Fresno	0-34
Reedley	14-20
Fresno 2 <sup>nd</sup> Team	0-18
Reedley	12-6
Fowler	2-0
Alumni	0-19

1918 – No Information

1917 – No Information

1916 – Limited Information  
0-1-0

Alumni 0-23

# Per Echo: "We are not permitted to play football. We decided to devote our time to basketball, track and baseball."

1915 – Limited Information  
1-1-0

Reedley	12-0
Exeter	0-7

1914 – No Information

1913 – No Information

1912 – No Information

1911 – Limited Information

Zinn broke leg in 2<sup>nd</sup> Quarter; No further games.

1910 – KINNEE  
3-2-1

Limited Information

1909 – WALTON  
Limited Information  
2-1-1

Town Team	20-0
Fresno	5-0
Selma	0-0
Selma	0-19

1908 – Limited Information  
2-3-1

Selma	5-11
Fresno	0-25
Selma	4-0
Selma	5-5
Selma	0-5
Alumni	17-0

1907 – Limited Information  
0-1-1

Fresno 2 <sup>nd</sup> Team	0-6
Fresno 2 <sup>nd</sup> Team	5-5

1906 – Limited Information  
1-1-2

Selma	0-0
Madera	0-0
Selma	0-13
Madera	2-0

1905 – No Information

1904 – Limited Information  
0-1-0

Selma	0-8
-------	-----

1903 – Limited Information  
1-0-1

Fowler	(W)
Fowler	(T)

1902 – Limited Information  
0-1-1

Dinuba	0-5
Fresno 2 <sup>nd</sup> Team	0-0

1901 – Limited Information  
1-0-1

Mill Team	11-6
Mill Team	6-6

1900 – Limited Information  
0-1-0

Selma	5-43
-------	------

+ league game  
\*\* playoff game

\*\*\* Valley Championship game

League Champion

Valley Champion

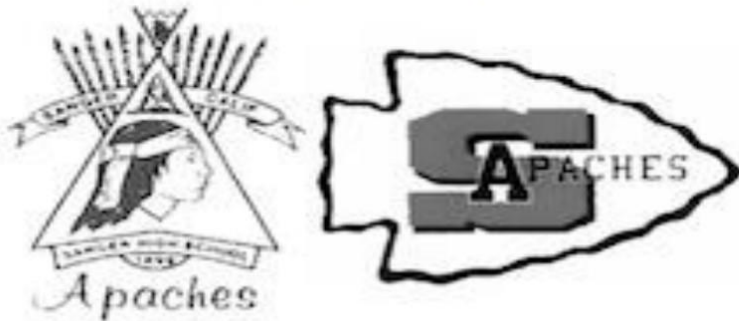
League & Valley Champion



## Epilogue

Sanger Unified School District split into 2 separate high schools & teams in 2022

Sanger High Apaches  
established 1899



Sanger West High Hornets  
established 2022



## Inaugural Sanger West vs Sanger Game

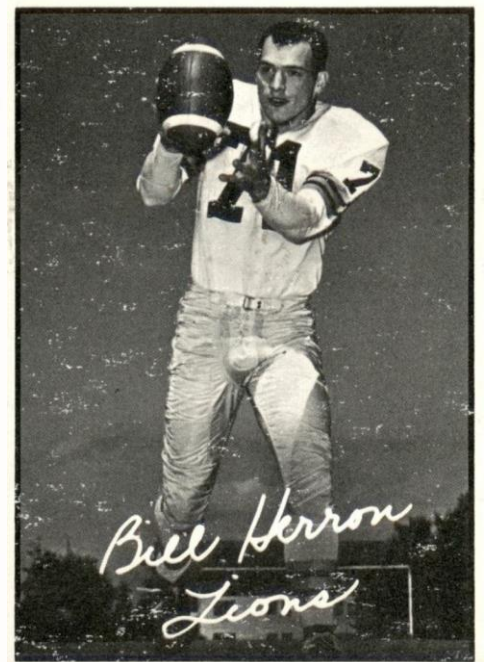
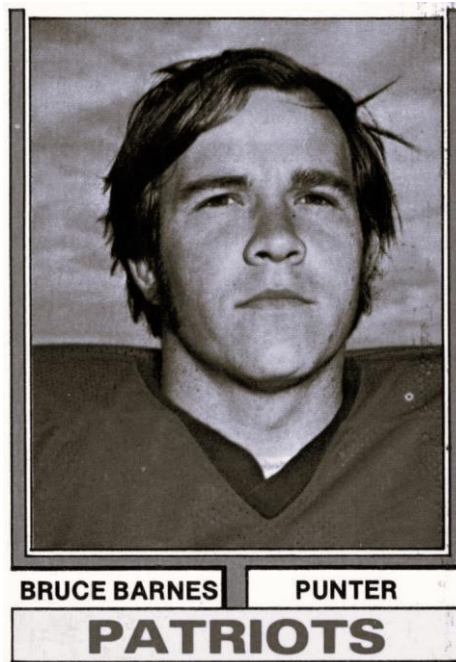
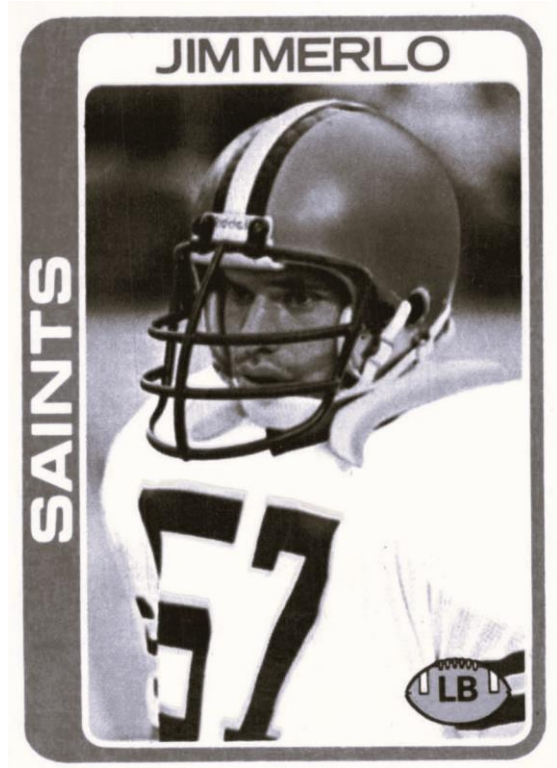
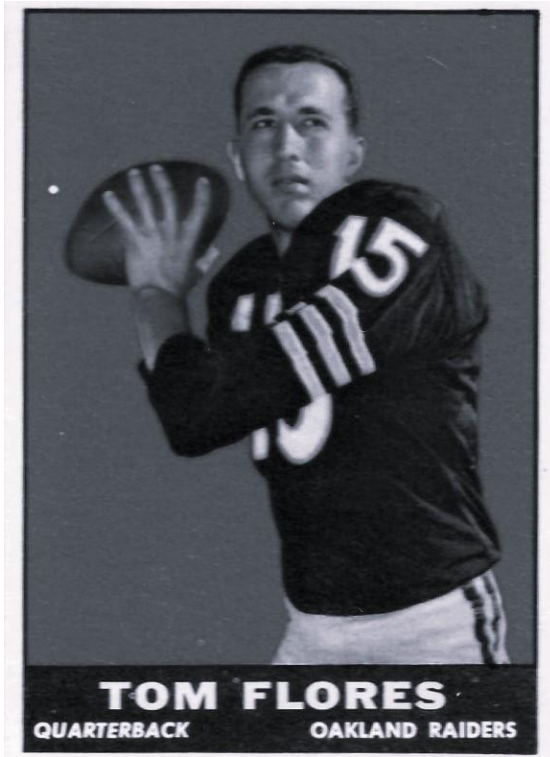
Friday, August 19, 2022 at Tom Flores Stadium







Professional Players Trading Cards



\*No Cards for Nick Papac (Oakland Raiders / AFL) & Aaron Mosby (Carolina Panthers / NFL)



**Ron Blackwood**

2019 Inductee  
Sanger High School  
Athletic Hall of Fame



49 years  
statistician, announcer  
&/or record keeper  
for this Sanger High  
Sports History